



Exam Code: e20-095

Exam Name: EMC Technology Foundations-CAS

Vendor: EMC

Version: DEMO

Part: A

1: Which statement about Network backup is correct?

- A.Both Metadata and Data passes over the network infrastructure
- B.Only Data passes over the network infrastructure
- C.Only Metadata passes over the network infrastructure
- D.No Metadata or Data passes over the network infrastructure

Correct Answers: A

2: In a Centera, how many internal switches are in a two cube Generation 4 cabinet?

- A.2
- B.3
- C.4
- D.5

Correct Answers: C

3: What is a characteristic of Centera fixed content?

- A.Expandable
- B.Short-term storage
- C.Transaction Oriented
- D.Unalterable

Correct Answers: D

4: What tool is used by service personnel to troubleshoot the Centera?

- A.Centera GUI
- B.Centera Manager
- C.Centera Viewer
- D.CenteraStar Verify

Correct Answers: C

5: What is a characteristic of a Content Address in Centera?

- A.Filesystem based
- B.Globally unique
- C.Location-dependent
- D.Sequentially based

Correct Answers: B

6: Which statement is true about Celerra Replicator for iSCSI?

- A.Is a file level I/O transfer solution
- B.Is implemented over campus distances only
- C.Is implemented over traditional fibre channel infrastructures
- D.Is implemented over traditional network infrastructures

Correct Answers: D

7: Which statement about Internet Protocol (IP) is correct?

- A. Defines the rules and procedures for sending information between network devices
- B. Delivers datagrams to all members of its destination host group
- C. Maps a logical network layer address with a physical MAC address
- D. Sends administrative information between network devices

Correct Answers: A

8: Which statement about User Datagram Protocol (UDP) is correct?

- A. Connectionless base protocol
- B. Every transmit requires an acknowledgement
- C. Guaranteed delivery protocol
- D. Ordered packet delivery

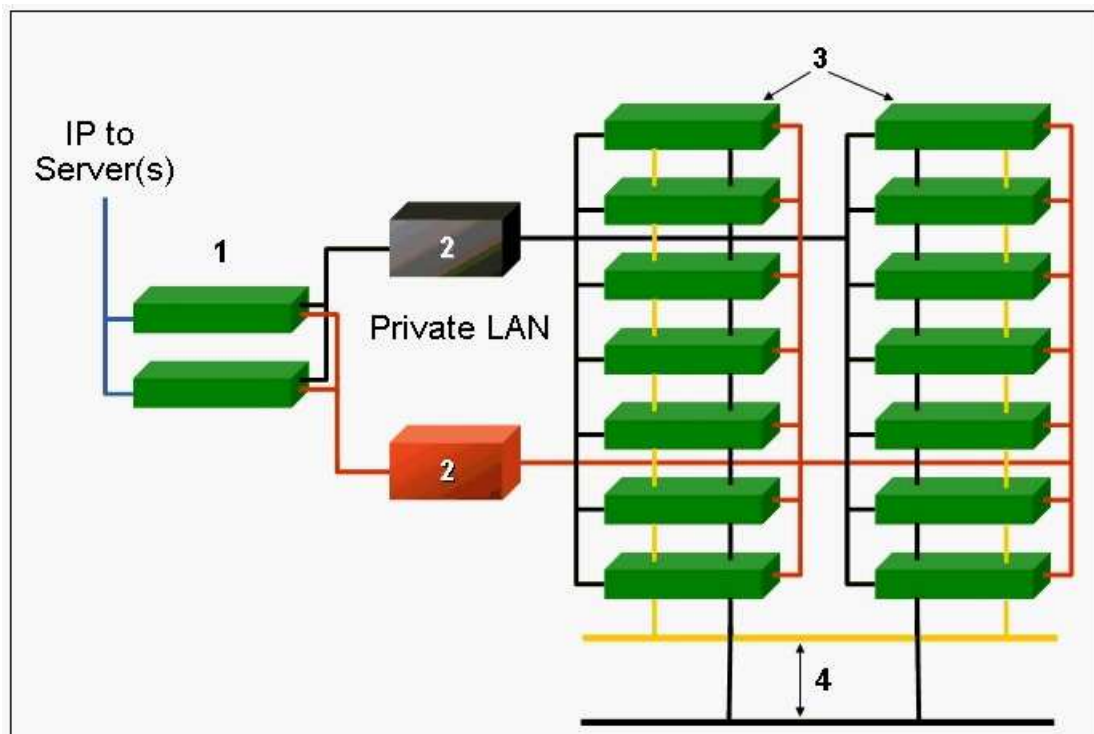
Correct Answers: A

9: Which statement about Celerra TimeFinder/FS Near Copy is correct?

- A. Is a CLARiiON only solution
- B. Provides a discrete standalone copy of the file system
- C. Provides a pointer based view of the file system
- D. Shares the same volume as the Production File System

Correct Answers: B

10: The exhibit displays the basic components of a Centra. What are the names of the components labeled 2 and 3?



A. 2=Access/Storage Nodes and 3=CUA

B. 2=Access/Storage Nodes and 3=Storage Nodes

C. 2=Switches and 3=Access/Storage Nodes

D.2=Switches and 3=Storage Nodes

Correct Answers: D

11: How many CFIs exist in a NetWorker data zone?

- A.One per backup volume
- B.One per data zone
- C.One per NetWorker client
- D.One per NetWorker server

Correct Answers: C

12: Which of the following is a dynamic routing protocol?

- A.DHCP
- B.NDMP
- C.OSPF
- D.SNMP

Correct Answers: C

13: What is the maximum number of DataMovers supported in the NS5XX range of equipment?

- A.2
- B.4
- C.6
- D.8

Correct Answers: A

14: What is a characteristic of Centera?

- A.Block level storage interface
- B.File Structure management
- C.Guaranteed content authenticity
- D.OLTP storage array

Correct Answers: C

15: A UNIX client must perform which operation to access a NAS advertised connection point?

- A.Export
- B.Map
- C.NFSMount
- D.Share

Correct Answers: C