



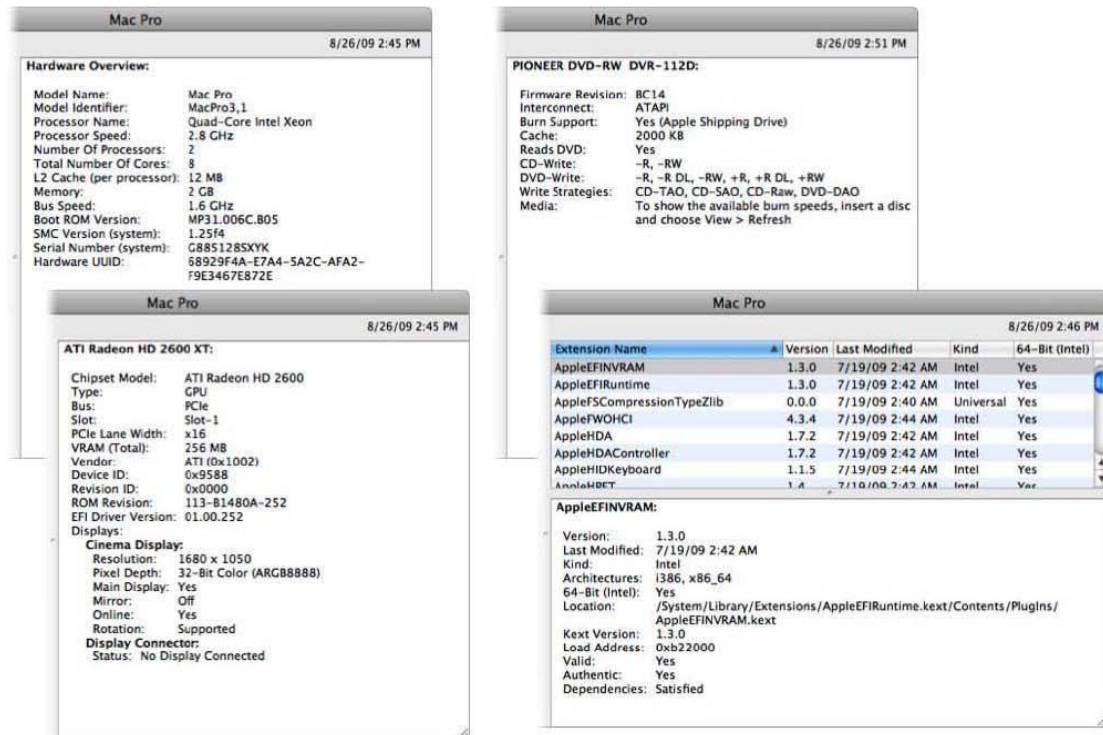
**Vendor:** Apple

**Exam Code:** 9L0-511

**Exam Name:** ACTC 10.6 Recertification

**Version:** DEMO

1. Review the four Apple System Profiler screenshots from a single Mac OS X v10.6 computer, and then answer the question below. What version of EFI firmware is installed on the computer whose profile is shown above?



- A. MP31.006C.B05
- B. 1.25f4
- C. 68929F4A-E7A4-5A2C-AFA2-F9E3467E872E
- D. 01.00.252
- E. BC14
- F. 1.3.0

**Answers: A**

2. When a user chooses Shut Down from the Apple menu, what process quits all of the user's open applications and tells the kernel to power down the computer?

- A. init
- B. launched
- C. kernel\_task
- D. login window

**Answers: D**

3. How do you start up a Mac OS X v10.6 computer in single-user mode?

- A. Type the command `reboot -single` in Terminal.
- B. Hold down the Command-S keys while the computer restarts.
- C. Hold down the Shift-Option keys while the computer restarts.
- D. Select Single-User Mode in the Startup Disk pane of System Preferences and restart the computer.

**Answers: B**

4. Which folder contains items that are started by the launched process when a Mac OS X v10.6 computer starts up?

- A. /etc/launched/
- B. /var/run/launched/
- C. /Library/Extensions/
- D. /System/Library/Launchedaemons/

**Answers: B**

5. Which statement describes characteristics of starting up a Mac OS X v10.6 computer in Safe Boot?

- A. To simplify troubleshooting, non-core components of the operating system do not load.
- B. To prevent user access to sensitive system files, Simple Finder loads instead of the standard Finder.
- C. To increase data security, local volumes are mounted with read-only privileges assigned to all standard users.
- D. To increase data security, Firewall and Sharing settings are modified to enable only the minimum set of protocols.

**Answers: A**