



Vendor: Apple

Exam Code: 9L0-406

Exam Name: Mac Integration Basics Exam

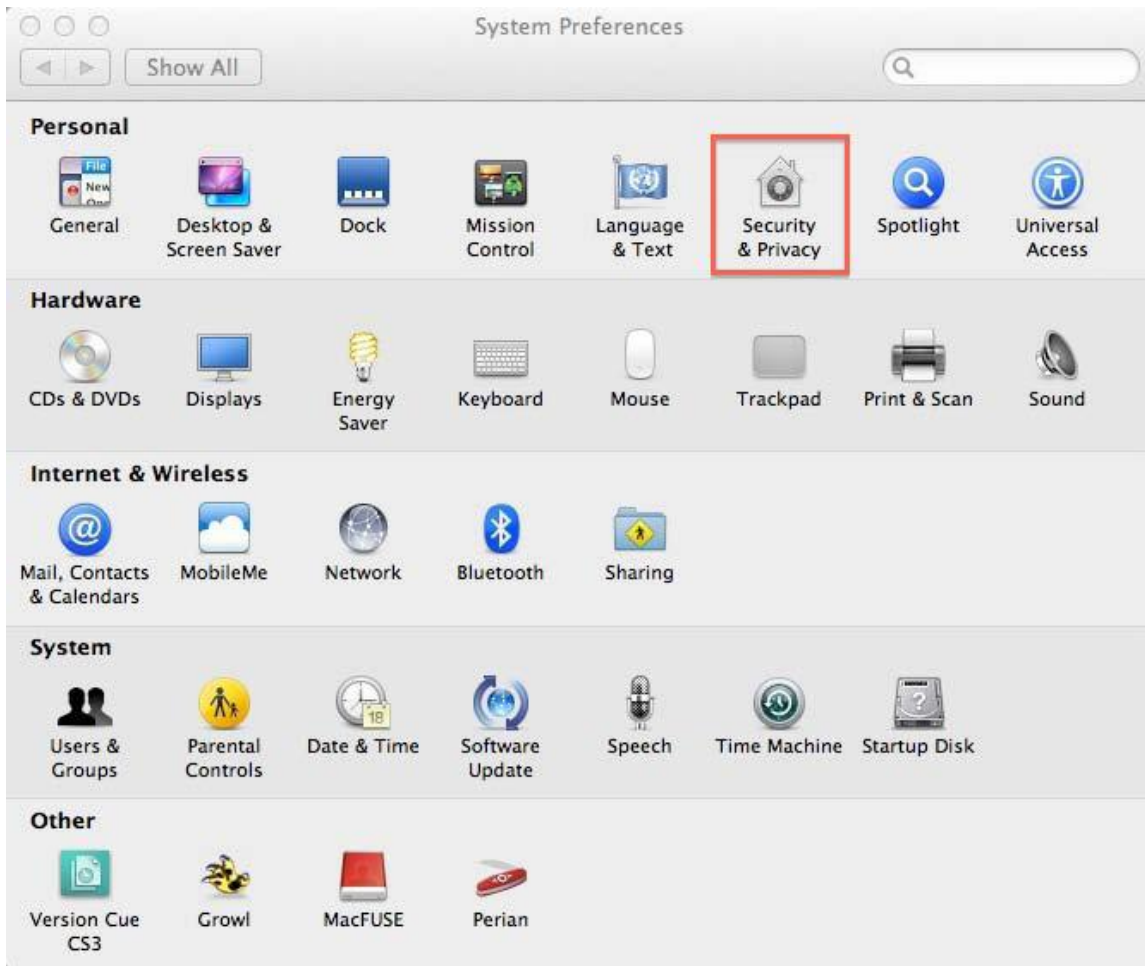
Version: DEMO

QUESTION 1

In the screenshot, click the Icon of the preference pane where you turn on the OS X personal firewall.



Answer:



QUESTION 2

What Windows Server technology provides directory and authentication services?

- A. Exchange Directory
- B. LDAP Directory
- C. Active Directory
- D. Open Directory

Answer: C

QUESTION 3

From your Mac, you want to access mail, calendars, and contacts served by a Microsoft Exchange Server.

What is the earliest version of Exchange Server for which Lion provides built-in support for this task?

- A. Microsoft Exchange Server 2003
- B. Microsoft Exchange Server 2007 with Service Pack 1 Update Rollup 4
- C. Microsoft Exchange Server 2003 with Service Pack 2
- D. Microsoft Exchange Server 2000 with Service Pack 4

E. Microsoft Exchange Server 2010

Answer: B

QUESTION 4

In the screenshot, click the icon of the preference pane where you configure a Mac to let Windows computers access files on the Mac using the SMB protocol.



Answer:



QUESTION 5

Which statement about iChat is true?

- A. iChat can be configured to use a Google Talk account.
- B. In order for a Mac user to use iChat to exchange instant messages with a Windows user, the Windows user must install iChat.
- C. iChat can be configured to use a Microsoft Live Messenger account.
- D. iChat requires users to have an Apple ID account.

Answer: A

QUESTION 6

In the screenshot, click the interface element that displays a list of the available file servers on your network.



Answer:



QUESTION 7

In OS X Lion, where can you set the firmware password?

- A. In the Firmware Password utility in the Utilities folder
- B. In the Users & Groups pane of System Preferences
- C. In the Firmware Password utility, after booting from the Recovery partition
- D. In the Security pane of System Preferences

Answer: C

QUESTION 8

You are NOT able to access a Windows file server using your OS X computer's "Connect to Server" command.

What is a possible cause of this problem?

- A. You need to select the "Windows support" option in the Sharing pane of System Preferences before accessing a Windows file server.
- B. You need to prefix the Windows server address with "smb://" in the "Connect to Server" dialog.
- C. It is NOT possible to access Windows file servers using the "Connect to Server" command.
- D. You need to install Boot Camp on your OS X computer before accessing a Windows file server.

Answer: B

QUESTION 9

What is POP's role in email transactions?

- A. It lets mail clients retrieve email from the mail server.
- B. It transfers outgoing email from the sender's mail server to the recipient's mail server.
- C. It translates IP addresses into domain names, and vice versa
- D. It provides user account information, including the email address associated with a particular user account.

Answer: A

QUESTION 10

In the context of computers on a network, what does "bind" mean?

- A. Configure a computer to connect to a network account server.
- B. Configure a firewall on a computer to restrict inbound traffic
- C. Remove data from a hard disk so that the computer can be recycle
- D. Restrict access to the files on a local hard disk.
- E. Configure a computer to prevent it from accessing data on the network.

Answer: A