



Exam Code: 920-537

Exam Name: CVoIP MG 15K Operations, Maintenance &
Configuration.

Vendor: Nortel

Version: DEMO

Part: B

1: Which group of four network management interfaces is used to access a Multiservice Switch 15000?

- A.IP, telnet, FMIP, local
- B.local, NMS, IP, FMIP
- C.datastream, telnet, local, FMIP
- D.local, telnet (remote), FMIP, FTP

Correct Answers: D

2: Which network management interface is exclusively for MDM workstation access with the Multiservice Switch 15000?

- A.FTP
- B.FMIP
- C.Local
- D.Telnet

Correct Answers: B


3: How many simultaneous telnet sessions can be active at one time?

- A.1
- B.8
- C.16
- D.35

Correct Answers: C

4: Click the exhibit button

Which of the following attributes of the software download (Sw Dld) component needs to be configured prior to initiating the download command?



```
ok Telnet 47.140.92.161
11>
11>
11> d sw dld
Sw Dld
  avBeingDownloaded =
  status             = inactive
  filesToTransfer    = 0
  avListToDownload   =
  downloadedAvList   =
  processorTargets   = i960 ppc
ok                   2007-08-18 14:27:55.01
12>
12> -
```

- A.filesToTransfer

- B.downloadedAvList
- C.avListToDownload
- D.avBeingDownloaded

Correct Answers: C

5: Which command will display all software that could be removed (erased) from the Multiservice Switch 15000 disk file system?

- A.tidy sw
- B.tidy -q sw
- C.tidy -all prov
- D.remove Sw AV/named_version

Correct Answers: B

6: Which command is used to show all the software applications on the hard drive of a Multiservice Switch 15000?

- A.d sw av
- B.d -p sw
- C.d sw avl
- D.l sw av/*

Correct Answers: D

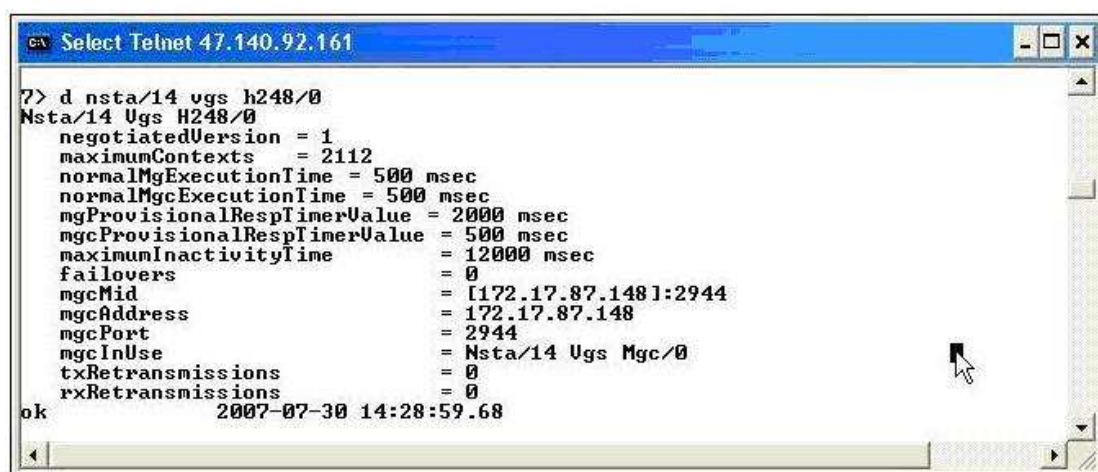
7: What is the component name that represents an instance of a Media Gateway 15000?

- A.Logical Processor (LP)
- B.TDM Access Group (TAG)
- C.Basic Rate Access Group Server (BRAGS)
- D.Narrowband Services Trunk over ATM (NSTA)

Correct Answers: D

8: Click the exhibit button.

What network element does the IP Address and UDP Port number as shown by operational attribute mgcMid identify?



- A.Gateway Controller (GWC)

- B. CS2000 Management Tool (CMT)
- C. Media Gateway 15000 (MG 15000)
- D. Communication Server (CS2000/CS2000-c)

Correct Answers: A

9: As of software release PCR 7.1, what is the only Connection Control protocol supported between the Media Gateway 15000 and its associated Gateway Controller (GWC)?

- A. SIP
- B. PPVM
- C. ASPEN
- D. H.248/MEGACO

Correct Answers: D

10: Click the exhibit button.

How many Carrier Grade Media Gateway 15000s in the exhibit can be configured on the Multiservice Switch 15000 shelf?

A	0	1	2	3	4	5	6	7
Ext. Slot	CP3	CP3	4p GE	4p GE	VSP 3-o	VSP 3-o	VSP 3-o	VSP 3-o
B	8	9	10	11	12	13	14	15
Ext. Slot	VSP 3-o	VSP 3-o	VSP 3-o	VSP 3-o	VSP 3-o	VSP 3-o	VSP 3-o	VSP 3-o

- A. 6
- B. 8
- C. 14
- D. 16

Correct Answers: A