



**Exam Code:** 510-802

**Exam Name:** Sybase PowerDesigner Data Modeling

Pro.Exam (version 12.1)

**Vendor:** Sybase

**Version:** DEMO

## Part: A

1: Which of the following is FALSE about PowerDesigner's reporting feature?

- A.The Report Editor and the Multi-Model Report Editor have their own windows but share the same graphical interface.
- B.You cannot open the Report Template Editor with no model attached to it.
- C.PowerDesigner contains a series of predefined structures called templates.
- D.The Report Language Editor is an independent module.

**Correct Answers: B**

2: PowerDesigner uses \_\_\_\_\_ to create Report templates.

- A.Word
- B.Model Editor
- C.Wordpad
- D.Report Template Editor
- E.Notepad

**Correct Answers: D**

3: To choose the columns displayed in a report list item, right-click the list item in the Report Editor and choose the \_\_\_\_\_ menu entry.

- A.Layout
- B.Format
- C.Selection
- D.Edit Title ?Edit Title

**Correct Answers: A**

4: A model has Diagram\_1, Diagram\_2, Diagram\_3. A report contains only the diagram\graphic node. How do I generate a report with diagrams in the order Diagram\_2, Diagram\_3 and Diagram\_1?

- A.Report -> Select Objects
- B.Right-click Graphics -> Selection
- C.Right-click Diagram -> Selection and make your selection Define Sort and Filter Window
- D.Right-click Diagram ->? Selection and make your selection from the Select Objects Window

**Correct Answers: C**

5: What does "Format" on the Graphics item of the Report Editor allow you to control? (Choose 2)

- A.The scale of the diagram image output to the report
- B.The type of image output to the report only
- C.The font and paragraph placement of the image and caption output to the report
- D.The display of the frame around the diagram image output to the report

**Correct Answers: A D**

6: PowerDesigner reports support which generation formats?

- A.Plain Text

- B.HTML
- C.RTF
- D.XML
- E.Tab Delimited Values
- F.CSV

**Correct Answers: B C D F**

7: Check model errors are displayed in which windows? (Choose 2)

- A.Result List
- B.Output
- C.Diagram
- D.Browser
- E.Merge Models
- F.Check Model Parameters

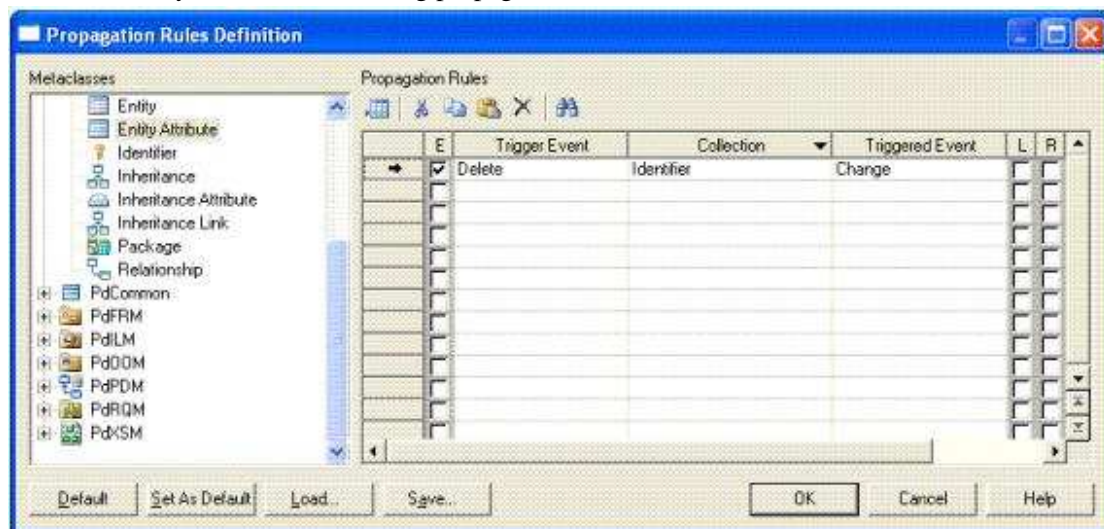
**Correct Answers: A B**

8: Which of the following objects are NOT available in a PowerDesigner CDM? (Choose 3)

- A.Entity
- B.Table
- C.Relationship
- D.Attribute
- E.Key
- F.Reference

**Correct Answers: B E F**

9: How would you read the following propagation rule?



- A.When an entity attribute is changed, the collection identifier is deleted.
- B.When an entity attribute is deleted, the collection identifier is changed.
- C.When an identifier is changed, the collection entity attribute is deleted.
- D.When an identifier is changed, the collection entity attribute is changed.

**Correct Answers: B**

10: Which sequence represents the hierarchy display in the Browser?

- A. Model -> Folder -> Workspace
- B. Workspace -> Folder -> Model
- C. Folder -> Workspace -> Model
- D. Folder -> Model -> Workspace

**Correct Answers: B**

11: In the Merge Model window, what does a red exclamation mark mean?

- A. Object has been created.
- B. Object has been modified.
- C. Object has been moved.
- D. Object has been deleted.

**Correct Answers: B**

12: Customizing your favorite tabs ?

- A. persist when the model is closed.
- B. returns to default when the model is closed.
- C. is defined on a package-per-package basis.
- D. is defined on a diagram-per-diagram basis.

**Correct Answers: A**

13: Which of the following can NOT be added to a Workspace?

- A. Folder
- B. Image file
- C. Model
- D. Report template
- E. Workspace

**Correct Answers: E**

14: On the Merging Model window, a user can? On the Merging Model window, a user can

- A. use the Change Filter tool to show only deleted objects.
- B. place a check in a check box to prevent the change indicated.
- C. see the to model on the left side and from model on the right side.
- D. right-click a specific line item to remove it from the list.

**Correct Answers: A**

15: Which categories are NOT found in General Options? (Choose 2)

- A. General
- B. Dialog
- C. Object View
- D. Naming Convention
- E. Repository

**Correct Answers: C D**

16: Which of the following can NOT be set using a template model?

- A. Model Options
- B. Custom Shapes
- C. Display Preferences
- D. General Options

**Correct Answers: D**

17: Where are the naming conventions for objects set?

- A. Tools -> General Options
- B. Tools -> Display Preferences
- C. Tools -> Resources
- D. Tools -> Model Options

**Correct Answers: D**

18: In the Customize Columns and Filter window, what are the available wild cards? (Choose 2)

- A. %
- B. \*
- C. \_
- D. ?

**Correct Answers: B D**

19: What are NOT common uses of the Generation Template Language (GTL)?

- A. Creating or modifying the DDL generation for an RDBMS
- B. Defining the Trigger Template or Template Items
- C. Defining tabs and forms for Extended Attributes
- D. Creating custom naming convention scripts

**Correct Answers: C**

20: Which feature allows you to customize a model by creating an association between two meta classes?

- A. Custom Form
- B. Criterion
- C. Extended Collection
- D. Extended Attribute

**Correct Answers: C**