



Cisco

Exam 300-370

Troubleshooting Cisco Wireless Enterprise Networks

Version: 7.0

[Total Questions: 60]

Question No : 1

A recently acquired Cisco Aironet 1550 series AP is unable to join the WLC. This message is observed on the AP console:

AAA Authentication Failure for UserName:CC93.1981.0035 User Type: WLAN USER

Which action must be taken for the AP to associate with the controller?

- A. Add MAC address CC93.1981.0035 to the Security AAA AP policy Authorization List.
- B. Authenticate the AP to the WLC from the console using an admin account on the WLC.
- C. Add MAC address CC93.1981.035 to the Security AAA MAC Filtering tab.
- D. Import the self-signed certificate of the AP to the Security:Certificate:LSC tab.
- E. Import the self-signed certificate of the AP to the Security:Certificate:SSC tab.

Answer: A

Question No : 2

You have successfully configured HA and SSO using two Cisco 5508 Wireless LAN Controllers. You are able to access the Active Primary WLC but are unable to access the Secondary Standby WLC. Which two methods will allow you to access the standby unit? (Choose two.)

- A. Via SSH to the Redundancy Management Interface.
- B. Via Service Port Interface.
- C. Via SSH to the Management Interface.
- D. Via console connection.

Answer: C,D

Question No : 3

Which channel width is the maximum that can be obtained by bonding two 802.11 ac subchannels according to US regulations?

- A. 160 MHz
- B. 120 MHz
- C. 84 MHz

D. 240 MHz

Answer: A

Question No : 4

A Cisco WLC v7.0 is not seeing an AP join. Which starting prefix debug command can help determine a combination of discovery/join and DHCP process status?

- A. debug capwap events - from Cisco WLC
- B. debug capwap events - from the AP
- C. debug ip udp - from Cisco WLC
- D. debug ip udp - from the AP

Answer: D

Question No : 5

A wireless engineer is unable to join lightweight access points to the Cisco Wireless Controller. The access points receive ip addresses from a DHCP pool configured on the core switch. Which action must be taken to resolve the issue?

- A. Upgrade the Wireless Controller to a newer IOS release.
- B. Configure option 43 on the DHCP pool.
- C. Configure option 82 on the Wireless controller.
- D. Change the management ip address on the Wireless Controller.

Answer: C

Question No : 6

An engineer is troubleshooting AP join issues on a wireless infrastructure. While gathering debugs, the engineer notices that one of the commands may generate an excessive an excessive amount of data on the console. Which command causes this to occur?

- A. debug capwap detail enable

- B. debug capwap errors enable
- C. debug capwap info enable
- D. debug capwap events enable
- E. debug capwap packet enable
- F. debug capwap payload enable

Answer: B

Question No : 7

Some users are experiencing inconsistent performance on their mobile devices as they move throughout the building when browsing the Internet. Which feature provides a more consistent user experiences?

- A. low RSSI check
- B. 802.11r
- C. RX-SOP
- D. optimized roaming

Answer: A

Question No : 8

A user reports being unable to connect to a server with a certain program while connected to wireless. Which troubleshooting methodology can be used to begin the troubleshooting process?

- A. top-down
- B. shoot from the hip
- C. follow the path
- D. bottom-up
- E. divide and conquer

Answer: A

Question No : 9

Which ports require unrestricted port access for CleanAir RF spectrum analysis between

the AP and Cisco Spectrum Expert?

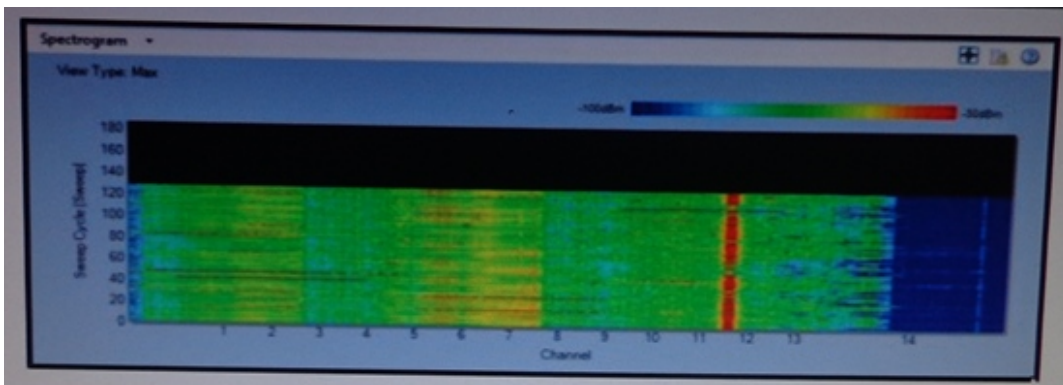
- A. UDP 5246 and 5247
- B. UDP 37540 and 37550
- C. TCP 16113 and 16114
- D. TCP 37540 and 37550
- E. TCP 5246 and 5247
- F. UDP 16113 and 16114

Answer: D

Question No : 10

An engineer is troubleshooting non-802.11 interference and observes this output. Which type of interference signatures can the engineer identify?

Refer to the exhibit.



- A. microwave
- B. DECT phone
- C. Bluetooth
- D. jammer

Answer: A

Question No : 11

Two 5508 Wireless Lan Controllers are managing all Access Points throughout the network. The WLCs are located in different locations to provide geographical redundancy. A Mobility Group has been configured on both WLCs and has a UP status on both Controllers. The

APs in location A are statically configured to use Controller A as the Primary and Controller B as the Secondary. If the WLC in location A goes offline, the APs successfully join the WLC in location B but they do not failover to their Primary configured Controller. What configuration task will fix this issue?

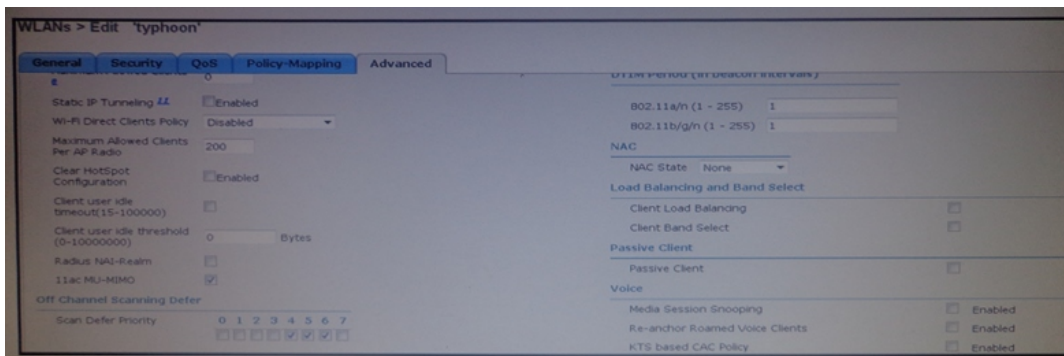
- A. Change the AP Failover Priority to critical.
- B. Enable AP Fallback globally on the WLC.
- C. Configure the WLC in location A as Primary using the CAPWAP AP Controller IP Address command on all the location A Access Points.
- D. Use DHCP Option 43 and specify WLC in location A as Primary.

Answer: C

Question No : 12

Which statement describes how the Hand Select feature works on the wireless controller?

Refer to the exhibit.



- A. The access point uses the load balancing feature to move the clients to 5 GHz.
- B. The access point changes the DTIM period on the 2.4 GHz band.
- C. The access point recommends the band in the association response to the client.
- D. The access point ignores and delays the probe request of the client on the 2.4 GHz.

Answer: C

Question No : 13

A Wireless LAN Cisco engineer is troubleshooting 802.11ac WLAN at customer site Doe to interferences with neighboring 802.11n networks. The engineer must determine the current primary/secondary channel allocation to enhance the current configuration.

Channel 60 has been chosen by the customer as primary 20 MHz channel. Which combination determines the resulting primary 40 MHz and primary 80 MHz channels?

- A. primary 40 MHz channel 62, primary 80 MHz: channel 58
- B. primary 40 MHz channel 54, primary 80 MHz channel 58
- C. primary 40 MHz channel 64, primary 80 MHz channel 60
- D. primary 40 MHz channel 60, primary 80 MHz channel 56

Answer: A

Question No : 14

A WLAN engineer has just completed a wireless network installation using Cisco 2700 series access points. After checking the WLC, it seems that the APs are running in medium power. What effect will this have in the APs?

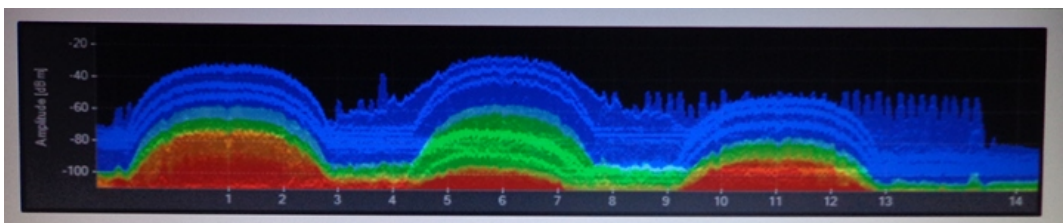
- A. Due to insufficient power, the access points are not broadcasting any Wireless networks.
- B. Due to insufficient power, only the 2.4 GHz radio is up.
- C. Due to insufficient power the access points have dynamically shifted from 3x4 to 3x3.
- D. Due to insufficient power the access points have dynamically shifted from 4x4 to 3x3.

Answer: C

Question No : 15

An engineer is troubleshooting non-802.11 interference and observes this output. Which type of interference signatures can be identified?

Refer to the exhibit.



- A. one frequency hopping Bluetooth
- B. two healthy CCK and one malformed OFDM

- C. three broadband jammers
- D. two strong microwave ovens and one moderate

Answer: B

Question No : 16

An engineer must open a support case with Cisco TAC. Which two commands verify the model and serial number of a controller? (Choose two)

- A. show sysinfo
- B. show udi
- C. show inventory
- D. show boot
- E. show tech-support

Answer: A,B

Question No : 17

A network engineer is troubleshooting why EAP authentication with a client is failing. Which two commands should be used to resolve the issue? (Choose two)

- A. debug dot1x notifications enable
- B. debug dot1x events enable
- C. debug arp
- D. debug aaa detail enable
- E. debug aaa events detail enable

Answer: B,E

Question No : 18

Refer to the exhibit.

A client reports being unable to log into the wireless network, which uses PEAPv2. Which two issues appear in the output? (Choose two)


```
Dec 7 13:56:09.373: dot11_auth_dot1x_start: in the dot11_auth_dot1x_start
Dec 7 13:56:09.373: dot11_auth_dot1x_send_id_req_to_client:
    sending identity request for 0040.96a0.3758
Dec 7 13:56:09.374: dot11_auth_dot1x_send_id_req_to_client:
    Started timer client_timeout 30 seconds
Dec 7 13:56:39.358: dot11_auth_dot1x_run_fsm:
    Executing Action(CLIENT_WAIT, TIMEOUT) for 0040.96a0.3758
Dec 7 13:56:39.358: dot11_auth_dot1x_send_client_fail:
    Authentication failed for 0040.96a0.3758
Dec 7 13:56:39.358: %DOT11-7-AUTH_FAILED:
    Station 0040.96a0.3758 Authentication failed
```

- A. The AP has the incorrect RADIUS server address
- B. There is a problem with the client supplicant
- C. The AP has lost IP connectivity to the authentication server
- D. The authentic at ion server is misconfigured on the controller
- E. The EAP client timeout value should be increased
- F. The authentication server is misconfigured in the WLAN

Answer: A,C

Question No : 19

Clients are failing EAP authentication A debug shows that an EAP handshake started and the clients are then de-authenticated. Which two issues can cause this problem'? (Choose two.)

- A. The clients are configured for machine authentication, but the RADIUS server is configured for user authentication.
- B. The WLC has not been added to the RADIUS server as a client.
- C. The WLC certificate has changed.
- D. The shared secret of the WLC and RADIUS server do not match.
- E. The WLAN is not configured for the correct EAP supplicant type.

Answer: B,E

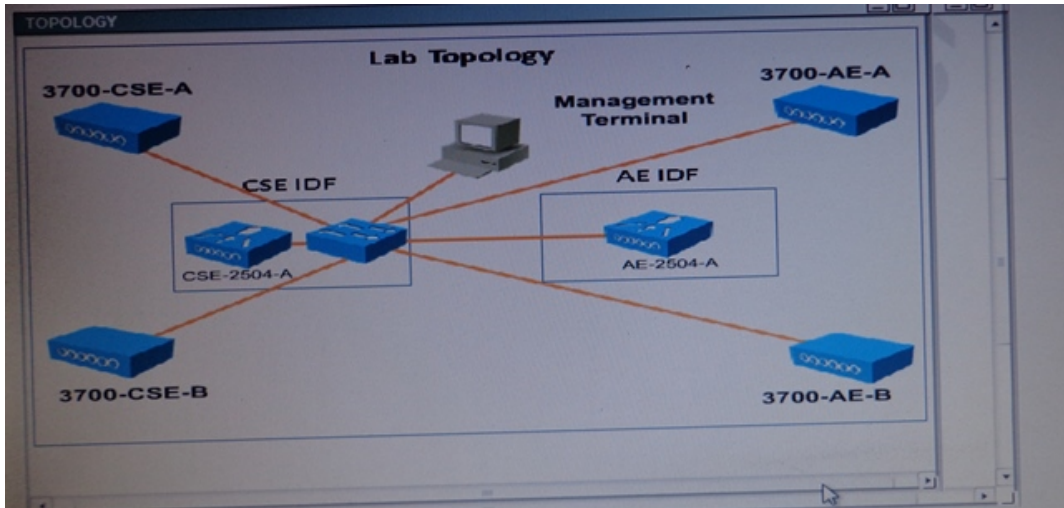
Question No : 20

Scenario

The Big Engineering IT team has been working in the lab to do some testing of some new features the existing network won't support. They are AP Groups, AP Failover, and Local

Web Auth. They have been having problems with all three features. In this test environment the controllers only support the Composite and Structural Engineering and Aerodynamic Engineering groups. All SSIDs should omit the department name. Refer to the exhibit. This is a diagram of the floor plan for the Big Engineering office and the distribution of the departments. The tables below show how the controllers have been configured.

Note, not all menu items, text boxes, or radio buttons are active.



BE-GA

Controller Management Interfaces

Name	IP address	Gateway	DHCP Interface
CSE-2504A	192.168.2.98/24	192.168.2.1	192.168.2.98
AE-2504A	192.168.3.98/24	192.168.3.1	192.168.3.98
HF-2504A	192.168.4.98/24	192.168.4.1	192.168.4.98

Composite and Structural Engineering (CSE)

WLANs

Profile Name	SSID
CSE-Engineering	CSE-Engineering
CSE-Contractors	CSE-Contractors
CSE-Employees	CSE-Employees

Microsoft Exams List

70-246 Dump PDF VCE	70-485 Dump PDF VCE	70-742 Dump PDF VCE	98-366 Dump PDF VCE
70-247 Dump PDF VCE	70-486 Dump PDF VCE	70-743 Dump PDF VCE	98-367 Dump PDF VCE
70-331 Dump PDF VCE	70-487 Dump PDF VCE	70-744 Dump PDF VCE	98-368 Dump PDF VCE
70-332 Dump PDF VCE	70-488 Dump PDF VCE	70-761 Dump PDF VCE	98-369 Dump PDF VCE
70-333 Dump PDF VCE	70-489 Dump PDF VCE	70-762 Dump PDF VCE	98-372 Dump PDF VCE
70-334 Dump PDF VCE	70-490 Dump PDF VCE	70-765 Dump PDF VCE	98-373 Dump PDF VCE
70-339 Dump PDF VCE	70-491 Dump PDF VCE	70-768 Dump PDF VCE	98-374 Dump PDF VCE
70-341 Dump PDF VCE	70-492 Dump PDF VCE	70-980 Dump PDF VCE	98-375 Dump PDF VCE
70-342 Dump PDF VCE	70-494 Dump PDF VCE	70-981 Dump PDF VCE	98-379 Dump PDF VCE
70-345 Dump PDF VCE	70-496 Dump PDF VCE	70-982 Dump PDF VCE	MB2-700 Dump PDF VCE
70-346 Dump PDF VCE	70-497 Dump PDF VCE	74-343 Dump PDF VCE	MB2-701 Dump PDF VCE
70-347 Dump PDF VCE	70-498 Dump PDF VCE	74-344 Dump PDF VCE	MB2-702 Dump PDF VCE
70-348 Dump PDF VCE	70-499 Dump PDF VCE	74-409 Dump PDF VCE	MB2-703 Dump PDF VCE
70-354 Dump PDF VCE	70-517 Dump PDF VCE	74-678 Dump PDF VCE	MB2-704 Dump PDF VCE
70-383 Dump PDF VCE	70-532 Dump PDF VCE	74-697 Dump PDF VCE	MB2-707 Dump PDF VCE
70-384 Dump PDF VCE	70-533 Dump PDF VCE	77-420 Dump PDF VCE	MB2-710 Dump PDF VCE
70-385 Dump PDF VCE	70-534 Dump PDF VCE	77-427 Dump PDF VCE	MB2-711 Dump PDF VCE
70-410 Dump PDF VCE	70-640 Dump PDF VCE	77-600 Dump PDF VCE	MB2-712 Dump PDF VCE
70-411 Dump PDF VCE	70-642 Dump PDF VCE	77-601 Dump PDF VCE	MB2-713 Dump PDF VCE
70-412 Dump PDF VCE	70-646 Dump PDF VCE	77-602 Dump PDF VCE	MB2-714 Dump PDF VCE
70-413 Dump PDF VCE	70-673 Dump PDF VCE	77-603 Dump PDF VCE	MB2-715 Dump PDF VCE
70-414 Dump PDF VCE	70-680 Dump PDF VCE	77-604 Dump PDF VCE	MB2-716 Dump PDF VCE
70-417 Dump PDF VCE	70-681 Dump PDF VCE	77-605 Dump PDF VCE	MB2-717 Dump PDF VCE
70-461 Dump PDF VCE	70-682 Dump PDF VCE	77-881 Dump PDF VCE	MB2-718 Dump PDF VCE
70-462 Dump PDF VCE	70-684 Dump PDF VCE	77-882 Dump PDF VCE	MB5-705 Dump PDF VCE
70-463 Dump PDF VCE	70-685 Dump PDF VCE	77-883 Dump PDF VCE	MB6-700 Dump PDF VCE
70-464 Dump PDF VCE	70-686 Dump PDF VCE	77-884 Dump PDF VCE	MB6-701 Dump PDF VCE
70-465 Dump PDF VCE	70-687 Dump PDF VCE	77-885 Dump PDF VCE	MB6-702 Dump PDF VCE
70-466 Dump PDF VCE	70-688 Dump PDF VCE	77-886 Dump PDF VCE	MB6-703 Dump PDF VCE
70-467 Dump PDF VCE	70-689 Dump PDF VCE	77-887 Dump PDF VCE	MB6-704 Dump PDF VCE
70-469 Dump PDF VCE	70-692 Dump PDF VCE	77-888 Dump PDF VCE	MB6-705 Dump PDF VCE
70-470 Dump PDF VCE	70-695 Dump PDF VCE	77-891 Dump PDF VCE	MB6-884 Dump PDF VCE
70-473 Dump PDF VCE	70-696 Dump PDF VCE	98-349 Dump PDF VCE	MB6-885 Dump PDF VCE
70-480 Dump PDF VCE	70-697 Dump PDF VCE	98-361 Dump PDF VCE	MB6-886 Dump PDF VCE
70-481 Dump PDF VCE	70-698 Dump PDF VCE	98-362 Dump PDF VCE	MB6-889 Dump PDF VCE
70-482 Dump PDF VCE	70-734 Dump PDF VCE	98-363 Dump PDF VCE	MB6-890 Dump PDF VCE
70-483 Dump PDF VCE	70-740 Dump PDF VCE	98-364 Dump PDF VCE	MB6-892 Dump PDF VCE
70-484 Dump PDF VCE	70-741 Dump PDF VCE	98-365 Dump PDF VCE	MB6-893 Dump PDF VCE

Cisco Exams List

010-151 Dump PDF VCE	350-018 Dump PDF VCE	642-737 Dump PDF VCE	650-667 Dump PDF VCE
100-105 Dump PDF VCE	352-001 Dump PDF VCE	642-742 Dump PDF VCE	650-669 Dump PDF VCE
200-001 Dump PDF VCE	400-051 Dump PDF VCE	642-883 Dump PDF VCE	650-752 Dump PDF VCE
200-105 Dump PDF VCE	400-101 Dump PDF VCE	642-885 Dump PDF VCE	650-756 Dump PDF VCE
200-120 Dump PDF VCE	400-151 Dump PDF VCE	642-887 Dump PDF VCE	650-968 Dump PDF VCE
200-125 Dump PDF VCE	400-201 Dump PDF VCE	642-889 Dump PDF VCE	700-001 Dump PDF VCE
200-150 Dump PDF VCE	400-251 Dump PDF VCE	642-980 Dump PDF VCE	700-037 Dump PDF VCE
200-155 Dump PDF VCE	400-351 Dump PDF VCE	642-996 Dump PDF VCE	700-038 Dump PDF VCE
200-310 Dump PDF VCE	500-006 Dump PDF VCE	642-997 Dump PDF VCE	700-039 Dump PDF VCE
200-355 Dump PDF VCE	500-007 Dump PDF VCE	642-998 Dump PDF VCE	700-101 Dump PDF VCE
200-401 Dump PDF VCE	500-051 Dump PDF VCE	642-999 Dump PDF VCE	700-104 Dump PDF VCE
200-601 Dump PDF VCE	500-052 Dump PDF VCE	644-066 Dump PDF VCE	700-201 Dump PDF VCE
210-060 Dump PDF VCE	500-170 Dump PDF VCE	644-068 Dump PDF VCE	700-205 Dump PDF VCE
210-065 Dump PDF VCE	500-201 Dump PDF VCE	644-906 Dump PDF VCE	700-260 Dump PDF VCE
210-250 Dump PDF VCE	500-202 Dump PDF VCE	646-048 Dump PDF VCE	700-270 Dump PDF VCE
210-255 Dump PDF VCE	500-254 Dump PDF VCE	646-365 Dump PDF VCE	700-280 Dump PDF VCE
210-260 Dump PDF VCE	500-258 Dump PDF VCE	646-580 Dump PDF VCE	700-281 Dump PDF VCE
210-451 Dump PDF VCE	500-260 Dump PDF VCE	646-671 Dump PDF VCE	700-295 Dump PDF VCE
210-455 Dump PDF VCE	500-265 Dump PDF VCE	646-985 Dump PDF VCE	700-501 Dump PDF VCE
300-070 Dump PDF VCE	500-275 Dump PDF VCE	648-232 Dump PDF VCE	700-505 Dump PDF VCE
300-075 Dump PDF VCE	500-280 Dump PDF VCE	648-238 Dump PDF VCE	700-601 Dump PDF VCE
300-080 Dump PDF VCE	500-285 Dump PDF VCE	648-244 Dump PDF VCE	700-602 Dump PDF VCE
300-085 Dump PDF VCE	500-290 Dump PDF VCE	648-247 Dump PDF VCE	700-603 Dump PDF VCE
300-101 Dump PDF VCE	500-801 Dump PDF VCE	648-375 Dump PDF VCE	700-701 Dump PDF VCE
300-115 Dump PDF VCE	600-199 Dump PDF VCE	648-385 Dump PDF VCE	700-702 Dump PDF VCE
300-135 Dump PDF VCE	600-210 Dump PDF VCE	650-032 Dump PDF VCE	700-703 Dump PDF VCE
300-160 Dump PDF VCE	600-211 Dump PDF VCE	650-042 Dump PDF VCE	700-801 Dump PDF VCE
300-165 Dump PDF VCE	600-212 Dump PDF VCE	650-059 Dump PDF VCE	700-802 Dump PDF VCE
300-180 Dump PDF VCE	600-455 Dump PDF VCE	650-082 Dump PDF VCE	700-803 Dump PDF VCE
300-206 Dump PDF VCE	600-460 Dump PDF VCE	650-127 Dump PDF VCE	810-403 Dump PDF VCE
300-207 Dump PDF VCE	600-501 Dump PDF VCE	650-128 Dump PDF VCE	820-424 Dump PDF VCE
300-208 Dump PDF VCE	600-502 Dump PDF VCE	650-148 Dump PDF VCE	840-425 Dump PDF VCE
300-209 Dump PDF VCE	600-503 Dump PDF VCE	650-159 Dump PDF VCE	
300-210 Dump PDF VCE	600-504 Dump PDF VCE	650-281 Dump PDF VCE	
300-320 Dump PDF VCE	640-692 Dump PDF VCE	650-393 Dump PDF VCE	
300-360 Dump PDF VCE	640-875 Dump PDF VCE	650-472 Dump PDF VCE	
300-365 Dump PDF VCE	640-878 Dump PDF VCE	650-474 Dump PDF VCE	
300-370 Dump PDF VCE	640-911 Dump PDF VCE	650-575 Dump PDF VCE	
300-375 Dump PDF VCE	640-916 Dump PDF VCE	650-621 Dump PDF VCE	
300-465 Dump PDF VCE	642-035 Dump PDF VCE	650-663 Dump PDF VCE	
300-470 Dump PDF VCE	642-732 Dump PDF VCE	650-665 Dump PDF VCE	
300-475 Dump PDF VCE	642-747 Dump PDF VCE	650-754 Dump PDF VCE	

HOT EXAMS

Cisco

[100-105 Dumps VCE PDF](#)
[200-105 Dumps VCE PDF](#)
[300-101 Dumps VCE PDF](#)
[300-115 Dumps VCE PDF](#)
[300-135 Dumps VCE PDF](#)
[300-320 Dumps VCE PDF](#)
[400-101 Dumps VCE PDF](#)
[640-911 Dumps VCE PDF](#)
[640-916 Dumps VCE PDF](#)

Microsoft

[70-410 Dumps VCE PDF](#)
[70-411 Dumps VCE PDF](#)
[70-412 Dumps VCE PDF](#)
[70-413 Dumps VCE PDF](#)
[70-414 Dumps VCE PDF](#)
[70-417 Dumps VCE PDF](#)
[70-461 Dumps VCE PDF](#)
[70-462 Dumps VCE PDF](#)
[70-463 Dumps VCE PDF](#)
[70-464 Dumps VCE PDF](#)
[70-465 Dumps VCE PDF](#)
[70-480 Dumps VCE PDF](#)
[70-483 Dumps VCE PDF](#)
[70-486 Dumps VCE PDF](#)
[70-487 Dumps VCE PDF](#)

CompTIA

[220-901 Dumps VCE PDF](#)
[220-902 Dumps VCE PDF](#)
[N10-006 Dumps VCE PDF](#)
[SY0-401 Dumps VCE PDF](#)