



VMware

Exam 2V0-631

VMware Certified Professional 6 - Cloud Management and Automation Beta

Version: 6.2

[Total Questions: 110]

Question No : 1

A user requests that an approval policy be changed. The administrator tries to edit the approval policy and fails to find a way to edit the policy when logged in with the System Administrator role.

What is a likely cause of this situation?

- A. Once an approval policy is placed in Active state, it cannot be edited by any user.
- B. Once an approval policy is placed in Active state, it can only be edited by an approval admin.
- C. Once an approval policy is placed in Active state, it can only be edited by a tenant admin.
- D. Once an approval policy is placed in Active state, it can only be edited by administrator@vsphere.local admin.

Answer: A

Question No : 2

An IP address is provisioned from a vRealize Automation Network Profile static IP range.

What will happen when the workload using the IP address is destroyed?

- A. It will be automatically returned to the range for reuse within minutes.
- B. It will be batched with all reclaimable addresses and returned to the range daily.
- C. It will be permanently marked as unavailable for that specific range to prevent IP conflicts.
- D. It will be marked as unavailable until the range is deleted and recreated.

Answer: A

Question No : 3

Senior IT leadership wants information to help determine workload placement and tradeoffs between buying new hardware or using a public cloud provider.

What VMware product provides that information?

- A. vRealize Business
- B. vCenter Chargeback
- C. vCenter Configuration Manager
- D. vRealize Operations

Answer: A

Question No : 4

A reservation policy allows a strict relationship to be established between a blueprint and what other vRealize Automation object?

- A. Storage reservation
- B. Business group
- C. Tenant
- D. User group

Answer: A

Question No : 5

The vRealize Automation administrator has created a vSphere blueprint. During the entitlement configuration, which action should the administrator configure to allow users to delete machines that have been provisioned from this blueprint?

- A. Destroy (Virtual Machine)
- B. Destroy (vCD vApp)
- C. Destroy (Multi-Machine Service)
- D. Destroy (Cloud Machine)

Answer: A

Question No : 6

Which step should an administrator take to avoid conflict on a subnet between vRealize Automation Network Profiles and existing workloads?

- A. Enable DHCP on the Network Profile.
- B. Upload a CSV file with the existing IP addresses and host names to the Network Profile.
- C. Manually mark IP addresses as used.
- D. Enable the Shared Network flag in the Network Profile.

Answer: B

Question No : 7

Users need to provision a complex application that includes Virtual, Physical, and Cloud servers.

What should an administrator do to allow users to request all of the servers for this application in a single request?

- A. Create a blueprint for each machine that is part of the application.
Create a multi-machine blueprint and add each machine blueprint from the applicable local blueprints.
Create a Business Group for users in the department and configure Catalog Management.
- B. Create a blueprint for each machine that is part of the application.
Create a multi-machine blueprint and add each machine blueprint from the applicable global and local blueprints.
Create a Business Group for users in the department and configure Catalog Management.
- C. Create a multi-machine local or global blueprint specifying each machine that is part of the application.
Create a Business Group for users in the department and configure Catalog Management.
- D. Create a multi-machine global blueprint specifying each machine that is part of the application.
Create a Business Group for users in the department and configure Catalog Management.

Answer: A

Question No : 8

Which VMware NSX for vSphere components can be created on demand using vRealize Automation? (Choose two.)

- A. The Logical Switch
- B. The Distributed Router appliance

- C. The Distributed Firewall appliance
- D. The NSX Edge Services Gateway appliance

Answer: A,D

Question No : 9

Which two tools would a vRealize Automation administrator use to extend the default installation for the implementation of Anything as a Service (XaaS)? (Choose two.)

- A. vRealize Orchestrator
- B. Advanced Service Designer
- C. vCloud Automation Center Designer
- D. Infrastructure Organizer

Answer: A,B

Question No : 10

To improve provisioning time of Clone workflows, the configured per-agent limit has been increased. However, many of the workflows now fail.

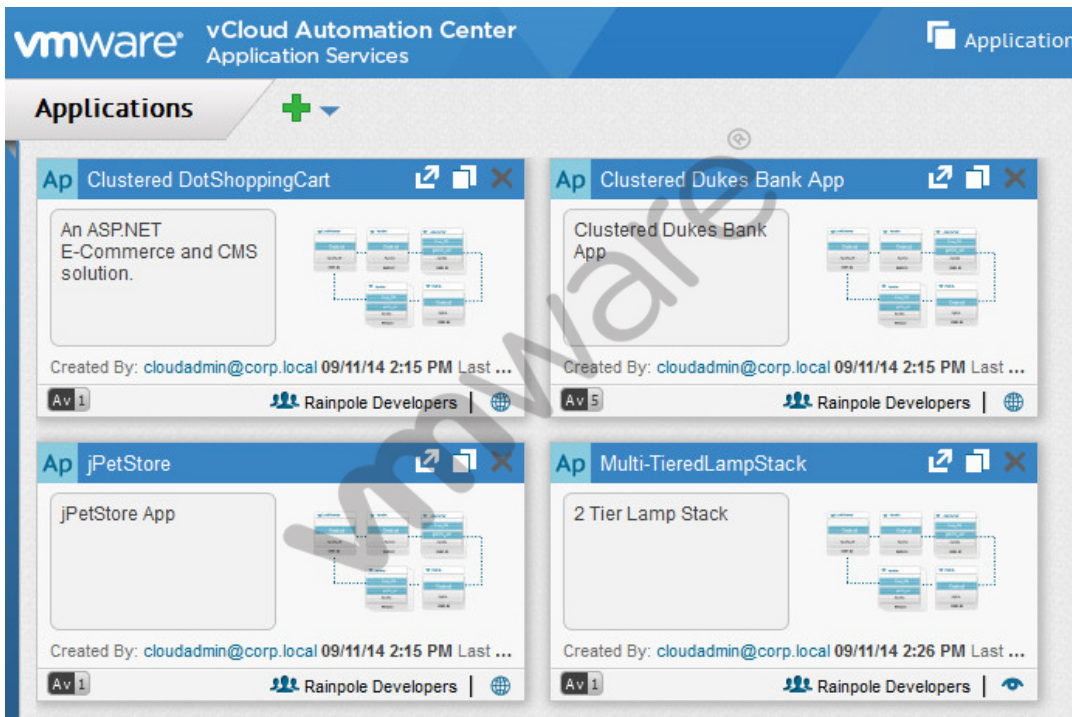
What action would resolve this?

- A. Add compute resources
- B. Increase the timeout interval
- C. Enable Fast Provisioning
- D. Increase the appliance RAM to 12GB

Answer: B

Question No : 11

Refer to the Exhibit.



A manager in the administration group cannot access a new application blueprint named Multi-TieredLampStack. Access should be restricted to applications used by the administration group.

An administrator examines the information shown in the exhibit.

What should be done to grant access?

- A. Publish the application blueprint.
- B. Add a new application version and grant permissions to the administration group.
- C. In the application, set Sharing to Shared.
- D. Add the administrator to the Rainpole Developers group.

Answer: C

Question No : 12

An administrator is trying to create a new Virtual Reservation. The vSphere Endpoint is configured and functioning properly.

What role and group is required in order to utilize a given compute resource when creating the Virtual Reservation?

- A. The administrator must be a Fabric Administrator in the correct Fabric Group.
- B. The administrator must be a Business Group Manager in the correct Fabric Group.
- C. The administrator must be a Fabric Administrator in the correct Business Group.
- D. The administrator must be a Business Group Manager in the correct Business Group.

Answer: A

Question No : 13

An administrator is troubleshooting IaaS components in a vRealize Automation deployment.

Which two steps outline the process for generating a log bundle for these components?
(Choose two.)

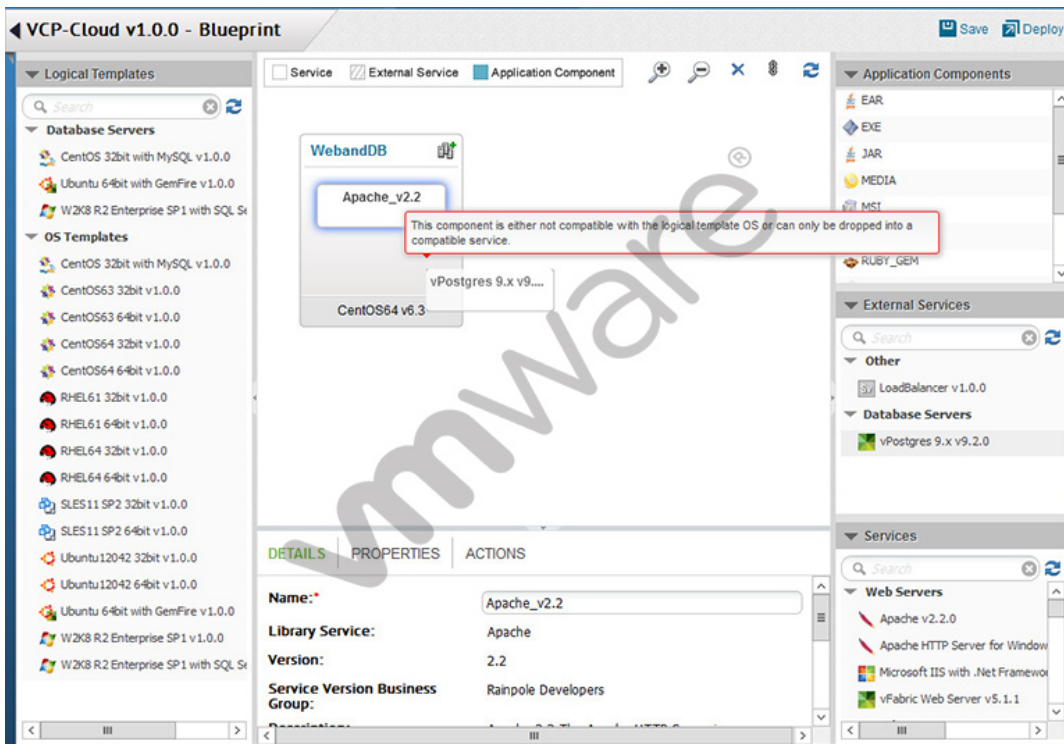
- A. Open the vRealize Appliance management console.
- B. Navigate to vRA Settings > Logs and click Create support bundle.
- C. Run the SupportBundleUtil.exe file.
- D. Select each component to collect log files and/or configuration files.

Answer: C,D

Question No : 14

Refer to the Exhibit.

Dumps with PDF and VCE (+Free VCE Software)



While building an application blueprint, the administrator cannot add a vPostgres database service to the new operating system, as shown in the exhibit.

What is needed to resolve this?

- A. Drag and drop vPostgres from the Services menu onto the new operating system.
- B. Delete the current operating system and deploy a new Database Server that includes vPostgres.
- C. Drag and drop a vPostgres Application Component to join the existing operating system and vPostgres objects.
- D. Add an External Service Instance Profile to the Deployment Environment.

Answer: A

Question No : 15

An administrator needs to account for the daily cost of operating a virtual machine as well as the cost of the software deployed on the virtual machine.

What action should the administrator take in vRealize Automation to provide the needed information?

- A. Assign a Blueprint Cost to the virtual machine blueprint.

- B. Assign a vRealize Business Operation Cost to the virtual machine blueprint.
- C. Assign a Daily Compute Cost to the virtual machine blueprint.
- D. Assign a vRealize Business Usage Cost to the virtual machine blueprint.

Answer: A

Question No : 16

What is required for a tenant to manage an item in vRealize Automation that was created by a vRealize Orchestrator workflow?

- A. A provisioned resource
- B. A resource mapping
- C. A resource action
- D. A published service blueprint

Answer: A

Question No : 17

The ability to perform a stretch deploy of a virtual machine contained in a vApp using the vSphere Client is unavailable. The administrator verifies that the environment is properly licensed and the target virtual machine is powered off.

What should the administrator do to enable the stretch deploy option?

- A. Power on the VM being stretch deployed.
- B. Configure the L2 VPN tunnel.
- C. Verify storage space on the destination is double the size of the VM
- D. Ensure the portgroup the VM connects to is VXLAN based.

Answer: C

Question No : 18

Which three roles have the permission to define new catalog items and publish them to the service catalog? (Choose three.)

- A. Service Architect
- B. Tenant Administrator
- C. Support User
- D. Business Group Manager
- E. IaaS Administrator

Answer: A,B,D

Question No : 19

An IaaS Administrator is explaining Endpoints to a colleague.

How can the administrator explain why it is not needed to enter credentials every time vRealize Automation collects data from an Endpoint?

- A. User Credentials are stored for Endpoints
- B. User Credentials are uploaded from a CSV file for Endpoints
- C. Identity Store authenticates for Endpoints
- D. vCenter Single Sign-On authenticates for Endpoints

Answer: A

Question No : 20

Which three data sources are supported for use with vRealize Business Standard?
(Choose Three.)

- A. Microsoft Azure
- B. EMC Storage Resource Management
- C. IBM SoftLayer
- D. vCenter Server
- E. vRealize Log Insight

Answer: A,B,D

Question No : 21

An Administrator is configuring vCloud Connector's (vCC) Content Sync. After configuring the vCC Server and vCC Node the vSphere folder is not syncing to the destination folder.

What could be wrong?

- A. Publish to Cloud Library has not been selected
- B. Publish to Content Library has not been selected
- C. Prepare Folder for Content Library has not been selected
- D. Prepare Cluster for Content Library has not been selected

Answer: B

Question No : 22

Which two types of identity stores can be configured for a tenant? (Choose two.)

- A. Active Directory
- B. OpenLDAP
- C. vSphere Single Sign-On (SSO)
- D. Active Directory Lightweight Directory Services

Answer: A,B

Question No : 23

An administrator creates a vRealize Automation virtual machine blueprint with the following resource parameters:

| | Minimum | Approval At | Maximum |
|--------------|---------|-------------|---------|
| # CPUs | 1 | 1 | 1 |
| Memory (MB) | 356 | 1029 | 4096 |
| Storage (GB) | 2 | 6 | 30 |
| Lease (days) | 7 | 31 | 90 |

A user tries to launch a machine based on this blueprint with the following resource

parameters:

| | Minimum |
|--------------|---------|
| # CPUs | 1 |
| Memory (MB) | 356 |
| Storage (GB) | 2 |
| Lease (days) | 7 |

What is the immediate outcome of this attempt?

- A. The virtual machine fails to deploy.
- B. The virtual machine is deployed as configured.
- C. The virtual machine deployment awaits administrative approval.
- D. The virtual machine deploys with automatically adjusted parameters.

Answer: C

Question No : 24

Which three types of Compute Resources can vRealize Automation use to provision machines? (Choose three.)

- A. ESX or ESXi host or cluster
- B. Virtual datacenter
- C. Amazon region
- D. Amazon AWS
- E. vCloud Director

Answer: A,B,C

Question No : 25

The vRealize Automation administrator has created a service named Development, which includes catalog items based on Windows and Linux.

The administrator has created an entitlement named Linux Users and added the Power On and Reset Actions permissions and the Development service.

The Linux users report seeing both Linux and Windows catalog items.

What is required to ensure the Linux users only see Linux catalog items?

A. Create separate Windows and Linux services.

Reassign the Linux Catalog items to the Linux service and the Windows catalog items to the Windows service then add both services to the Linux users' entitlement.

B. Create a separate Linux development service.

Reassign the Linux catalog items to this service and add this service to the Linux users' entitlement.

C. Edit the Linux users' entitlement.

Click the Items and Approvals Tab, add the Linux Catalog items to the Entitled Catalog Items and click Update.

D. Edit the Linux users' entitlement.

Click the Items and Approvals Tab, add the Linux and Windows catalog items to the Entitled Catalog Items and click Update.

Answer: C

Question No : 26

A tenant requests to use their own email server instead of the default email system defined.

How does the tenant administrator fulfill the tenant request?

A. Select Override Global in Email Servers menu and add tenant specific email server details.

B. Select Override Global in Email Server menu and have a business group admin add tenant specific email server details.

C. Select Override Default in Tenant Configuration menu and add tenant specific email server details.

D. Select Override Default in Tenant Configuration menu and have a business group admin add tenant specific email server details.

Answer: A

Question No : 27

An administrator is creating vRealize Automation reservations as initial placeholders for Business Groups. The administrator has specified Compute Resource, Name, Network Paths, Storage, and Provisioning Group settings to create the reservations.

Which additional setting must be specified to complete the task?

- A. Priority
- B. Memory
- C. Resource Pool
- D. Reservation Policy

Answer: A

Question No : 28

An upgrade of IaaS components fails for two servers running Website and Manager services on each server. The administrator started the upgrade on both servers at the same time.

What is a likely cause of the failure?

- A. Each individual server upgrade must be allowed to complete before starting another server upgrade.
- B. The Parallel Upgrade option in the upgrade wizard was not selected before starting the upgrade
- C. The Upgrade Order option in the upgrade wizard was not specified before starting the upgrade
- D. Wait for the first server upgrade to start processing before starting another server upgrade.

Answer: A

Question No : 29

Which three are valid components of a Service Blueprint? (Choose three.)

- A. input parameters
- B. custom resource
- C. provisioning
- D. submission forms
- E. approval policy

Answer: A,C,D

Question No : 30

Which three are required components for a vRealize Business Standard installation?
(Choose three.)

- A. VMware identity appliance
- B. vRealize Automation appliance
- C. vRealize Business Standard Appliance
- D. vRealize Automation IaaS component
- E. vRealize Operations Manager appliance

Answer: A,B,C

Question No : 31

An administrator needs to meet a department's temporary requirement for additional testing and development capacity of an unknown size.

Where should the administrator create a reservation for this Business Group within vRealize Automation?

- A. In an existing vCloud Director Dynamic Allocation virtual datacenter
- B. In an existing vCloud Director Allocation Pool virtual datacenter
- C. In an existing vCloud Director Reservation Pool virtual datacenter
- D. In an existing vCloud Director Pay As You Go virtual datacenter

Answer: D

Question No : 32

Microsoft Exams List

| | | | |
|-------------------------------------|-------------------------------------|-------------------------------------|--------------------------------------|
| 70-246 Dump PDF VCE | 70-485 Dump PDF VCE | 70-742 Dump PDF VCE | 98-366 Dump PDF VCE |
| 70-247 Dump PDF VCE | 70-486 Dump PDF VCE | 70-743 Dump PDF VCE | 98-367 Dump PDF VCE |
| 70-331 Dump PDF VCE | 70-487 Dump PDF VCE | 70-744 Dump PDF VCE | 98-368 Dump PDF VCE |
| 70-332 Dump PDF VCE | 70-488 Dump PDF VCE | 70-761 Dump PDF VCE | 98-369 Dump PDF VCE |
| 70-333 Dump PDF VCE | 70-489 Dump PDF VCE | 70-762 Dump PDF VCE | 98-372 Dump PDF VCE |
| 70-334 Dump PDF VCE | 70-490 Dump PDF VCE | 70-765 Dump PDF VCE | 98-373 Dump PDF VCE |
| 70-339 Dump PDF VCE | 70-491 Dump PDF VCE | 70-768 Dump PDF VCE | 98-374 Dump PDF VCE |
| 70-341 Dump PDF VCE | 70-492 Dump PDF VCE | 70-980 Dump PDF VCE | 98-375 Dump PDF VCE |
| 70-342 Dump PDF VCE | 70-494 Dump PDF VCE | 70-981 Dump PDF VCE | 98-379 Dump PDF VCE |
| 70-345 Dump PDF VCE | 70-496 Dump PDF VCE | 70-982 Dump PDF VCE | MB2-700 Dump PDF VCE |
| 70-346 Dump PDF VCE | 70-497 Dump PDF VCE | 74-343 Dump PDF VCE | MB2-701 Dump PDF VCE |
| 70-347 Dump PDF VCE | 70-498 Dump PDF VCE | 74-344 Dump PDF VCE | MB2-702 Dump PDF VCE |
| 70-348 Dump PDF VCE | 70-499 Dump PDF VCE | 74-409 Dump PDF VCE | MB2-703 Dump PDF VCE |
| 70-354 Dump PDF VCE | 70-517 Dump PDF VCE | 74-678 Dump PDF VCE | MB2-704 Dump PDF VCE |
| 70-383 Dump PDF VCE | 70-532 Dump PDF VCE | 74-697 Dump PDF VCE | MB2-707 Dump PDF VCE |
| 70-384 Dump PDF VCE | 70-533 Dump PDF VCE | 77-420 Dump PDF VCE | MB2-710 Dump PDF VCE |
| 70-385 Dump PDF VCE | 70-534 Dump PDF VCE | 77-427 Dump PDF VCE | MB2-711 Dump PDF VCE |
| 70-410 Dump PDF VCE | 70-640 Dump PDF VCE | 77-600 Dump PDF VCE | MB2-712 Dump PDF VCE |
| 70-411 Dump PDF VCE | 70-642 Dump PDF VCE | 77-601 Dump PDF VCE | MB2-713 Dump PDF VCE |
| 70-412 Dump PDF VCE | 70-646 Dump PDF VCE | 77-602 Dump PDF VCE | MB2-714 Dump PDF VCE |
| 70-413 Dump PDF VCE | 70-673 Dump PDF VCE | 77-603 Dump PDF VCE | MB2-715 Dump PDF VCE |
| 70-414 Dump PDF VCE | 70-680 Dump PDF VCE | 77-604 Dump PDF VCE | MB2-716 Dump PDF VCE |
| 70-417 Dump PDF VCE | 70-681 Dump PDF VCE | 77-605 Dump PDF VCE | MB2-717 Dump PDF VCE |
| 70-461 Dump PDF VCE | 70-682 Dump PDF VCE | 77-881 Dump PDF VCE | MB2-718 Dump PDF VCE |
| 70-462 Dump PDF VCE | 70-684 Dump PDF VCE | 77-882 Dump PDF VCE | MB5-705 Dump PDF VCE |
| 70-463 Dump PDF VCE | 70-685 Dump PDF VCE | 77-883 Dump PDF VCE | MB6-700 Dump PDF VCE |
| 70-464 Dump PDF VCE | 70-686 Dump PDF VCE | 77-884 Dump PDF VCE | MB6-701 Dump PDF VCE |
| 70-465 Dump PDF VCE | 70-687 Dump PDF VCE | 77-885 Dump PDF VCE | MB6-702 Dump PDF VCE |
| 70-466 Dump PDF VCE | 70-688 Dump PDF VCE | 77-886 Dump PDF VCE | MB6-703 Dump PDF VCE |
| 70-467 Dump PDF VCE | 70-689 Dump PDF VCE | 77-887 Dump PDF VCE | MB6-704 Dump PDF VCE |
| 70-469 Dump PDF VCE | 70-692 Dump PDF VCE | 77-888 Dump PDF VCE | MB6-705 Dump PDF VCE |
| 70-470 Dump PDF VCE | 70-695 Dump PDF VCE | 77-891 Dump PDF VCE | MB6-884 Dump PDF VCE |
| 70-473 Dump PDF VCE | 70-696 Dump PDF VCE | 98-349 Dump PDF VCE | MB6-885 Dump PDF VCE |
| 70-480 Dump PDF VCE | 70-697 Dump PDF VCE | 98-361 Dump PDF VCE | MB6-886 Dump PDF VCE |
| 70-481 Dump PDF VCE | 70-698 Dump PDF VCE | 98-362 Dump PDF VCE | MB6-889 Dump PDF VCE |
| 70-482 Dump PDF VCE | 70-734 Dump PDF VCE | 98-363 Dump PDF VCE | MB6-890 Dump PDF VCE |
| 70-483 Dump PDF VCE | 70-740 Dump PDF VCE | 98-364 Dump PDF VCE | MB6-892 Dump PDF VCE |
| 70-484 Dump PDF VCE | 70-741 Dump PDF VCE | 98-365 Dump PDF VCE | MB6-893 Dump PDF VCE |

Cisco Exams List

| | | | |
|--------------------------------------|--------------------------------------|--------------------------------------|--------------------------------------|
| 010-151 Dump PDF VCE | 350-018 Dump PDF VCE | 642-737 Dump PDF VCE | 650-667 Dump PDF VCE |
| 100-105 Dump PDF VCE | 352-001 Dump PDF VCE | 642-742 Dump PDF VCE | 650-669 Dump PDF VCE |
| 200-001 Dump PDF VCE | 400-051 Dump PDF VCE | 642-883 Dump PDF VCE | 650-752 Dump PDF VCE |
| 200-105 Dump PDF VCE | 400-101 Dump PDF VCE | 642-885 Dump PDF VCE | 650-756 Dump PDF VCE |
| 200-120 Dump PDF VCE | 400-151 Dump PDF VCE | 642-887 Dump PDF VCE | 650-968 Dump PDF VCE |
| 200-125 Dump PDF VCE | 400-201 Dump PDF VCE | 642-889 Dump PDF VCE | 700-001 Dump PDF VCE |
| 200-150 Dump PDF VCE | 400-251 Dump PDF VCE | 642-980 Dump PDF VCE | 700-037 Dump PDF VCE |
| 200-155 Dump PDF VCE | 400-351 Dump PDF VCE | 642-996 Dump PDF VCE | 700-038 Dump PDF VCE |
| 200-310 Dump PDF VCE | 500-006 Dump PDF VCE | 642-997 Dump PDF VCE | 700-039 Dump PDF VCE |
| 200-355 Dump PDF VCE | 500-007 Dump PDF VCE | 642-998 Dump PDF VCE | 700-101 Dump PDF VCE |
| 200-401 Dump PDF VCE | 500-051 Dump PDF VCE | 642-999 Dump PDF VCE | 700-104 Dump PDF VCE |
| 200-601 Dump PDF VCE | 500-052 Dump PDF VCE | 644-066 Dump PDF VCE | 700-201 Dump PDF VCE |
| 210-060 Dump PDF VCE | 500-170 Dump PDF VCE | 644-068 Dump PDF VCE | 700-205 Dump PDF VCE |
| 210-065 Dump PDF VCE | 500-201 Dump PDF VCE | 644-906 Dump PDF VCE | 700-260 Dump PDF VCE |
| 210-250 Dump PDF VCE | 500-202 Dump PDF VCE | 646-048 Dump PDF VCE | 700-270 Dump PDF VCE |
| 210-255 Dump PDF VCE | 500-254 Dump PDF VCE | 646-365 Dump PDF VCE | 700-280 Dump PDF VCE |
| 210-260 Dump PDF VCE | 500-258 Dump PDF VCE | 646-580 Dump PDF VCE | 700-281 Dump PDF VCE |
| 210-451 Dump PDF VCE | 500-260 Dump PDF VCE | 646-671 Dump PDF VCE | 700-295 Dump PDF VCE |
| 210-455 Dump PDF VCE | 500-265 Dump PDF VCE | 646-985 Dump PDF VCE | 700-501 Dump PDF VCE |
| 300-070 Dump PDF VCE | 500-275 Dump PDF VCE | 648-232 Dump PDF VCE | 700-505 Dump PDF VCE |
| 300-075 Dump PDF VCE | 500-280 Dump PDF VCE | 648-238 Dump PDF VCE | 700-601 Dump PDF VCE |
| 300-080 Dump PDF VCE | 500-285 Dump PDF VCE | 648-244 Dump PDF VCE | 700-602 Dump PDF VCE |
| 300-085 Dump PDF VCE | 500-290 Dump PDF VCE | 648-247 Dump PDF VCE | 700-603 Dump PDF VCE |
| 300-101 Dump PDF VCE | 500-801 Dump PDF VCE | 648-375 Dump PDF VCE | 700-701 Dump PDF VCE |
| 300-115 Dump PDF VCE | 600-199 Dump PDF VCE | 648-385 Dump PDF VCE | 700-702 Dump PDF VCE |
| 300-135 Dump PDF VCE | 600-210 Dump PDF VCE | 650-032 Dump PDF VCE | 700-703 Dump PDF VCE |
| 300-160 Dump PDF VCE | 600-211 Dump PDF VCE | 650-042 Dump PDF VCE | 700-801 Dump PDF VCE |
| 300-165 Dump PDF VCE | 600-212 Dump PDF VCE | 650-059 Dump PDF VCE | 700-802 Dump PDF VCE |
| 300-180 Dump PDF VCE | 600-455 Dump PDF VCE | 650-082 Dump PDF VCE | 700-803 Dump PDF VCE |
| 300-206 Dump PDF VCE | 600-460 Dump PDF VCE | 650-127 Dump PDF VCE | 810-403 Dump PDF VCE |
| 300-207 Dump PDF VCE | 600-501 Dump PDF VCE | 650-128 Dump PDF VCE | 820-424 Dump PDF VCE |
| 300-208 Dump PDF VCE | 600-502 Dump PDF VCE | 650-148 Dump PDF VCE | 840-425 Dump PDF VCE |
| 300-209 Dump PDF VCE | 600-503 Dump PDF VCE | 650-159 Dump PDF VCE | |
| 300-210 Dump PDF VCE | 600-504 Dump PDF VCE | 650-281 Dump PDF VCE | |
| 300-320 Dump PDF VCE | 640-692 Dump PDF VCE | 650-393 Dump PDF VCE | |
| 300-360 Dump PDF VCE | 640-875 Dump PDF VCE | 650-472 Dump PDF VCE | |
| 300-365 Dump PDF VCE | 640-878 Dump PDF VCE | 650-474 Dump PDF VCE | |
| 300-370 Dump PDF VCE | 640-911 Dump PDF VCE | 650-575 Dump PDF VCE | |
| 300-375 Dump PDF VCE | 640-916 Dump PDF VCE | 650-621 Dump PDF VCE | |
| 300-465 Dump PDF VCE | 642-035 Dump PDF VCE | 650-663 Dump PDF VCE | |
| 300-470 Dump PDF VCE | 642-732 Dump PDF VCE | 650-665 Dump PDF VCE | |
| 300-475 Dump PDF VCE | 642-747 Dump PDF VCE | 650-754 Dump PDF VCE | |

HOT EXAMS

Cisco

[100-105 Dumps VCE PDF](#)
[200-105 Dumps VCE PDF](#)
[300-101 Dumps VCE PDF](#)
[300-115 Dumps VCE PDF](#)
[300-135 Dumps VCE PDF](#)
[300-320 Dumps VCE PDF](#)
[400-101 Dumps VCE PDF](#)
[640-911 Dumps VCE PDF](#)
[640-916 Dumps VCE PDF](#)

Microsoft

[70-410 Dumps VCE PDF](#)
[70-411 Dumps VCE PDF](#)
[70-412 Dumps VCE PDF](#)
[70-413 Dumps VCE PDF](#)
[70-414 Dumps VCE PDF](#)
[70-417 Dumps VCE PDF](#)
[70-461 Dumps VCE PDF](#)
[70-462 Dumps VCE PDF](#)
[70-463 Dumps VCE PDF](#)
[70-464 Dumps VCE PDF](#)
[70-465 Dumps VCE PDF](#)
[70-480 Dumps VCE PDF](#)
[70-483 Dumps VCE PDF](#)
[70-486 Dumps VCE PDF](#)
[70-487 Dumps VCE PDF](#)

CompTIA

[220-901 Dumps VCE PDF](#)
[220-902 Dumps VCE PDF](#)
[N10-006 Dumps VCE PDF](#)
[SY0-401 Dumps VCE PDF](#)