



Vendor: VMware

Exam Code: 2V0-622

**Exam Name: VMware Certified Professional 6.5 - Data Center
Virtualization (6.5) Exam**

Version: Demo

QUESTION 1

A user is given the "Virtual machine user (sample)" role in a vSphere 6.x environment. Which three permissions would the user be able to perform? (Choose three.)

- A. Reset a virtual machine.
- B. Power on a virtual machine.
- C. Move a host into a cluster.
- D. Configure CD media.
- E. Migrate a virtual machine with Storage vMotion.

Correct Answer: ABD

QUESTION 2

Which two statements are true for Predictive DRS? (Choose two.)

- A. It balances resource utilization for virtual machines with unpredictable utilization patterns.
- B. It integrates DRS with vRealize Operations Manager to balance workloads for virtual machines before resource utilization spikes occur.
- C. It balances resource utilization based on a threshold's algorithm that runs each night.
- D. It determines the best placement and balance of virtual machines based on a threshold's algorithm that runs each night in vCenter Server 6.5 Database.

Correct Answer: BD

QUESTION 3

Which Host Profile Subprofile configuration is used to configure firewall settings for ESXi hosts?

- A. Advanced Configuration Settings
- B. General System Settings
- C. Security
- D. Networking

Correct Answer: A

QUESTION 4

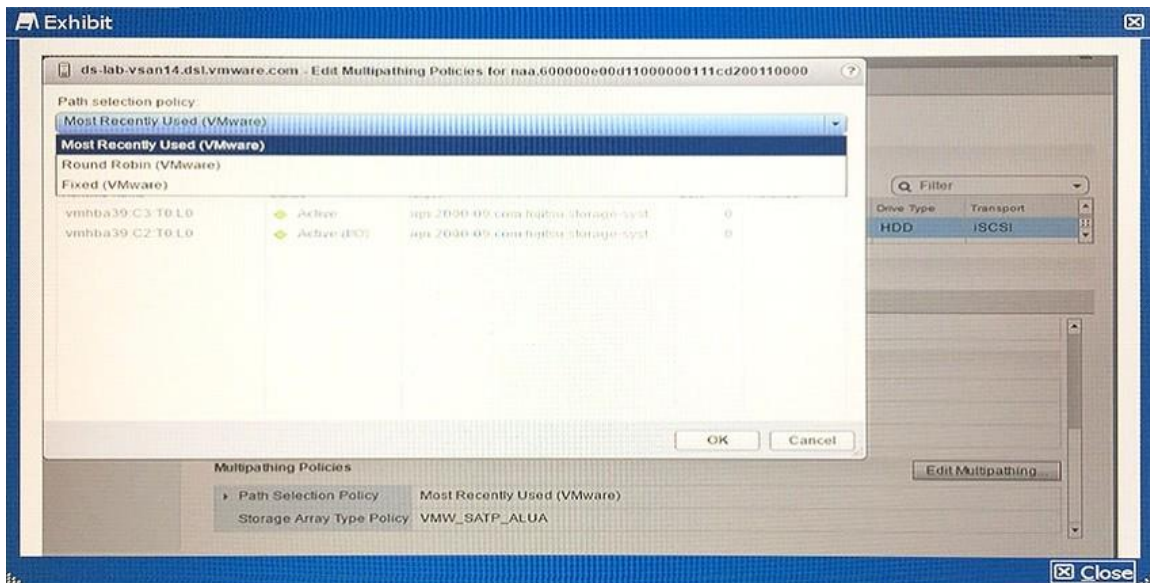
An administrator wants to create and use a vApp. Which pre-requisite must be met before the administrator can create a vApp?

- A. The vApp can only be deployed in an EVC enabled cluster.
- B. The vApp must be created within a Storage DRS cluster.
- C. None. vSphere 6.5 does not support vApp deployments.
- D. The vApp can only be created in a DRS enabled cluster.

Correct Answer: D

QUESTION 5

Examine the LUN properties that are shown in the exhibit. Which action should be taken to utilize all active paths?



- A. Change PSP to Most Recently Used
- B. No action required. All paths are already utilized.
- C. Change PSP to Fixed.
- D. Change PSP to Round Robin.

Correct Answer: D

QUESTION 6

When enabling Storage DRS on a datastore cluster, which three components are enabled as a result? (Choose three.)

- A. Space load balancing among datastore within the datastore cluster.
- B. Initial placement for virtual disks based on space and I/O workload.
- C. I/O load balancing among datastores within the datastore cluster.
- D. Queue Depth alerting on disks within the datastore cluster.
- E. Data de-duplication within the datastore cluster.

Correct Answer: ABC

Explanation:

<https://pubs.vmware.com/vsphere-51/index.jsp?topic=%2Fcom.vmware.vsphere.resmgmt.doc%2FGUID-19B6F05F-D285-4ACB-9B13-24A1DE9B4058.html>

QUESTION 7

A domain user is able to successfully log into the vSphere Web Client, but notices that the vCenter Server system does not appear in the inventory. Which is the cause of this situation?

- A. The Service Control Agent service is not running.

- B. The vCenter Server does not have anyhosts added to inventory yet.
- C. The domain user has read-only permissions on vCenter Server.
- D. The domain user does not have vCenter Server permissions.

Correct Answer: D

QUESTION 8

Which three are supported upgrade processes for ESXi host? (Choose three.)

- A. using vSphere Auto Deploy
- B. using a TFTP server
- C. using Update Manager
- D. using an ESXCLI command
- E. installing from CIFS share

Correct Answer: ACD

QUESTION 9

Which is the maximum number of block devices (LUNs) that are supported by ESXi hosts that are running version 6.5?

- A. 1024
- B. 512
- C. 2048
- D. 256

Correct Answer: B

QUESTION 10

Which is required by vCenter Converter Standalone to convert a physical Red Hat Enterprise Linux 7 machine to a virtual machine?

- A. The Linux machine must be powered off.
- B. The Linux machine must have the SSH daemon started.
- C. The Linux machine must use a static IP address.
- D. The Linux machine must have a fully-qualified domain name.

Correct Answer: C

QUESTION 11

An administrator sees the following error in the log files:

```
Lost access to volume 496befed-1c79c817-6beb-001ec9b60619 (san-  
lun-100) due to connectivity issues.
```

Which two events could be the source of the error message? (Choose two.)

- A. vCenter Server failure

- B. VXLAN failure
- C. Disk array failure
- D. Network failure
- E. ESXi host failure

Correct Answer: CE

QUESTION 12

An administrator is investigating virtual machine performance issues using ESXTOP. The ESXi host does not have hyperthreading enabled. Which statistics would be relevant for troubleshooting VM performance issues?

- A. %RDY
- B. %IDLE
- C. %RUN
- D. CORE UTIL(%)

Correct Answer: A

QUESTION 13

Which action can the Hybrid Cloud Manager perform?

- A. It can migrate virtual machines with vMotion between vCenter Servers with distinct Single Sign-on domains.
- B. It can manage vCloud Air and Amazon Web Services (EC2) from a single interface.
- C. It can migrate the virtual machines with vMotion between AWS, Azure, and vCloud Air.
- D. It can move a virtual machine from vCloud Air to on-premises vSphere.

Correct Answer: D

QUESTION 14

Which setting will allow a virtual machine to have direct secure access to an RDM?

- A. NIOC
- B. NPV
- C. NPIV
- D. CPUID Mask

Correct Answer: C

QUESTION 15

Which are three supported storage requirements for vCenter Server HA? (Choose three.)

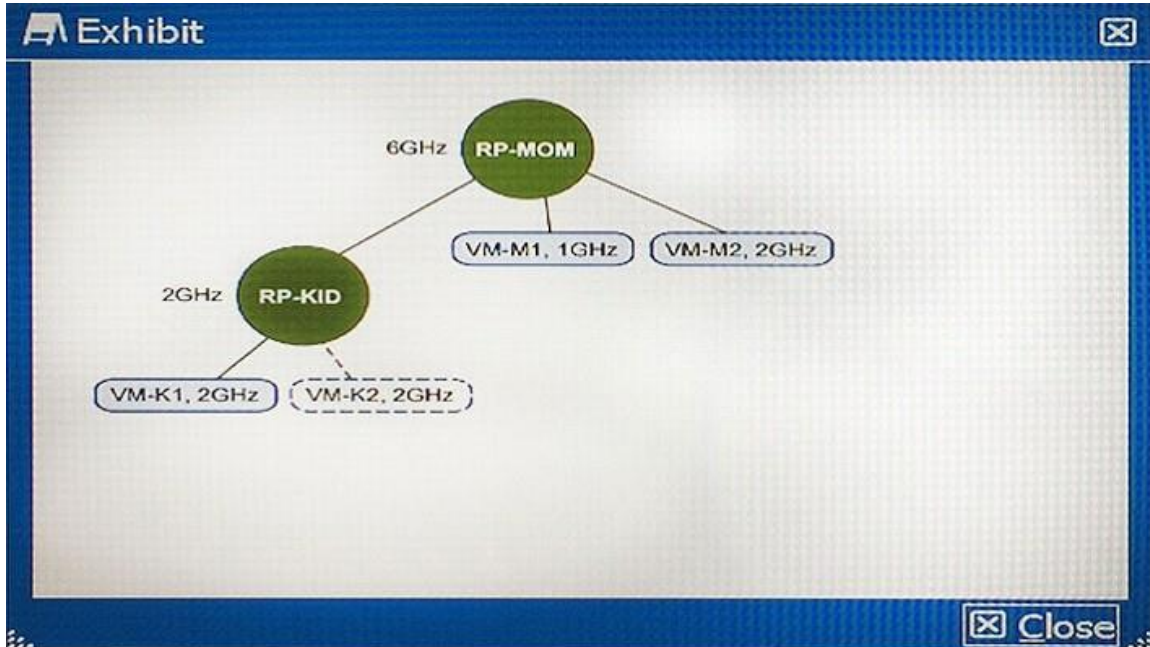
- A. NFS
- B. RDM
- C. vSAN
- D. VMFS
- E. JBOD

Correct Answer: ACD

QUESTION 16

The administrator wants to power on VM-K2, which has a 2GHz CPU reservation. VM-M1, VM-M2, and VM-K1 are all powered on. VM-K2 is not powered on.

The exhibit shows the parent and child resource reservations.



If Resource Pool RP-KID is configured with an expandable reservation, which statement is true?

- A. VM-K2 will be unable to power on because there are insufficient resources.
- B. VM-K2 will be able to power on since resource pool RP-KID has 2GHz available.
- C. VM-K2 will be unable to power on because only 2GHz are reserved for RP-KID.
- D. VM-K2 will receive resource priority and will be able to power on this scenario.

Correct Answer: A

QUESTION 17

An administrator wants to upgrade ESXi 5.5 hosts to ESXi 6.5 using Update Manager. When performing a scan for baseline compliance, the host's status is marked Compliant. Which has happened?

- A. Host must be version 6.0 in order to upgrade to 6.5.
- B. Host has some third-party software installed.
- C. Host has no upgradebaseline attached.
- D. Host hardware is not supported for upgrade.

Correct Answer: C