



# Oracle

## Exam 1z0-441

### Oracle Mobile Development 2015 Essentials

Version: 6.0

[ Total Questions: 85 ]

**Question No : 1**

What two features are common for unbounded task flows and bounded task flows in MAF?

- A. define managed beans
- B. support task flow input and output parameters
- C. support task flow return calls
- D. basis for an MAF feature
- E. define control flow cases between activities

**Answer: D,E**

**Explanation:**

A MAF AMX page can be referenced in both bounded and unbounded task flows, in which case actions outcomes from both task flows are included in the Action selection list.

**Question No : 2**

In an application created from an application archive, which one of the archives can be extended, but cannot be directly seen?

- A. AMX page source code
- B. Java classes
- C. bounded task flows
- D. unbounded task flows
- E. maf-applications.xml

**Answer: B**

**Question No : 3**

Your application has the requirement to create a shopping cart feature with multiple pages to search and select items and separate pages to pay and finalize the transaction.

When defining this feature in MAF, which single content type is the correct choice?

- A. fragment

- B. local AMX
- C. local HTML
- D. declarative component
- E. remote URL
- F. bounded task flow
- G. unbounded task flow
- H. remote task flow

**Answer: D,E,F**

#### **Question No : 4**

Which three mobile application scenarios require programmatic data access?

- A. Data that is created or changed in the mobile application must immediately update the remote service on the server.
- B. Data read from remote services should be cached on the client for best performance.
- C. The mobile application must implement a local read-write strategy in which all data is first read from and written to the mobile client persistent store.
- D. Dependent data collections need to be shown on a page in which selecting a row in the parent collection triggers the query and display of remote detail data.
- E. For best performance, a user must be able to sort data queried from a remote service locally in the mobile application.

**Answer: A,D,E**

#### **Question No : 5**

Which three are valid options to distribute your production MAF applications?

- A. application marketplace (such as the Apple App Store or Google Play)
- B. download site
- C. enterprise application store provided by solutions such as the Oracle Mobile Security Suite
- D. through Java Web Start by using the Java Network Launch Protocol (JNLP)
- E. the Oracle Store (<https://shop.oracle.com>)

**Answer: A,B,C**

**Question No : 6**

Identify two characteristics of a responsive mobile application design.

- A. adjusts the back-end access to services based on the protocol being used
- B. adjusts the mobile UI based on the device orientation
- C. responds to user gestures such as tap and hold or swipe
- D. adjusts the mobile UI based on screen size
- E. immediately responds to changes the user makes to a field value in the UI layer.

**Answer: C,E**

**Question No : 7**

Identify three features of Oracle Mobile Security Suite.

- A. It creates a separate container for corporate applications on a mobile device.
- B. It modifies service endpoints to allow for changing authentication protocols.
- C. It wipes data from a lost or stolen device.
- D. It allows single sign-on among different applications.
- E. It integrates heterogeneous services across a network.

**Answer: B,C,D**

Reference:<http://www.oracle.com/technetwork/middleware/id-mgmt/overview/omss-technical-wp-2104766.pdf>

**Question No : 8**

Identify the statement that correctly describes the configurable aspects of a MAF application.

- A. It is possible to configure the application through user preferences and the end points for web services and login connections can also be configured.
- B. It is possible to configure the application only through user preferences.
- C. MAF provides a built-in user interface to change the end points for web services and login connections.
- D. It is possible to configure an application through user preferences and the Configuration

Service, but only if the application relies on the Access Control Service for authorization.

**Answer: A**

**Question No : 9**

Which two statements about using HTTPS to secure access to a mobile service are true?

- A. HTTPS is impervious to attacks.
- B. HTTPS secures only the transport to the service.
- C. HTTPS can be used for data redaction.
- D. HTTPS alone is insufficient for services that require user-level authentication.

**Answer: B,D**

**Question No : 10**

When developing a MAF application for service technicians, you determine that the mobile technician will need to extensively describe the condition of the item he or she is servicing, including the area that is broken and any other pertinent details.

How would you implement this in an MAF application to avoid excessive typing?

- A. Use a remote URL page to enable the technician to specify the description in a browser-based page.
- B. Use the camera integration feature to allow the technician to take a photo of the serviced item.
- C. Use an input text area to allow for multiple lines of text.
- D. Use the voice recognition integration feature to allow the technician to enter details by voice.

**Answer: D**

**Question No : 11**

Which is a feature of Oracle Mobile Application Framework?

- A. It provides a simple Objective-C coding experience.
- B. It provides a choice between the two development languages, Java and JavaScript.
- C. It enables you to run Android Davlik Java code on iOS.
- D. It enables you to create web mobile pages that are served from a Java EE server.
- E. It leverages PL/SQL to create on-device applications.

**Answer: B**

Reference:<http://www.oracle.com/technetwork/developer-tools/maf/overview/index.html>

### **Question No : 12**

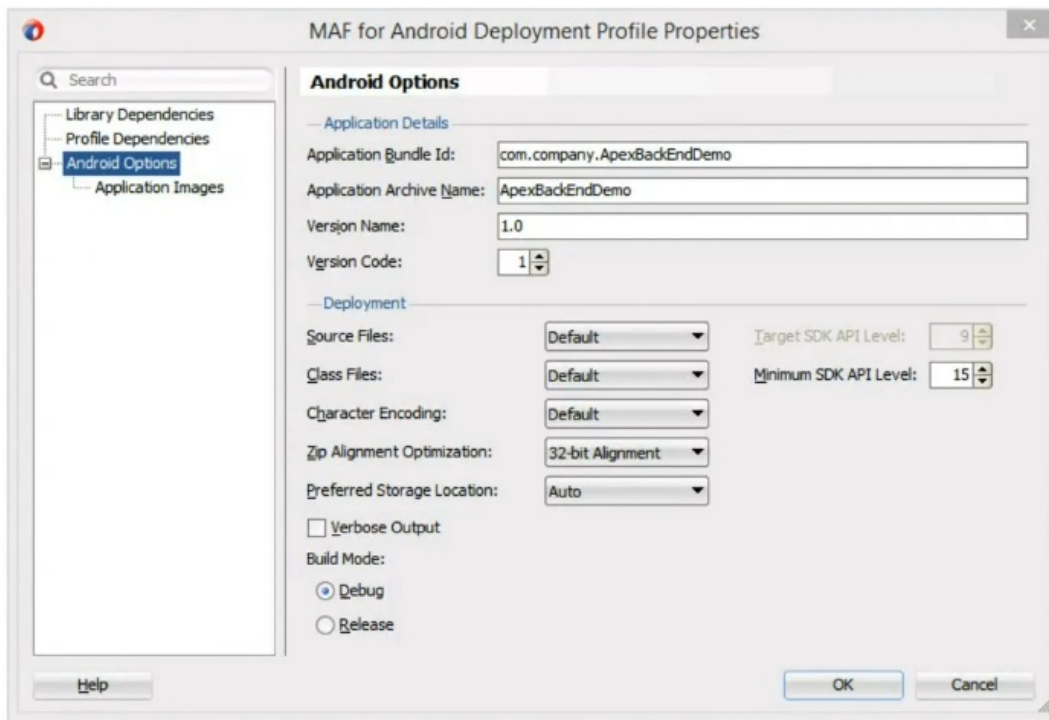
In your application, you want to show a picture of a theatre with dynamic markers indicating which seats are available or unavailable. What DVT component should you use?

- A. dvtm:geographicMap
- B. dvtm: ledGauge
- C. dvtm:lineChart
- D. dvtm:nBox
- E. dvtm:thematicMap
- F. dvtm:treeMap

**Answer: E**

### **Question No : 13**

View the Exhibit.



The application accesses secured web services over HTTPS. The certificates have been issued by the internal certificate authority of your organization. In addition, the application requires access to the SMS and camera features of the device.

Which are the three actions you must perform to prepare the application for distribution on the Google Play Store?

- A. In the deployment profile, specify a unique, Java language-like package name identifying the application as the ApplicationBundle ID.
- B. Obtain or generate a private key to sign the application package (.apk file) and update the preferences of your IDE to use it.
- C. Validate your archive name by using the registry available on the Oracle Technology Network.
- D. Register your application on the Oracle Mobile Cloud Service.
- E. In the deployment profile, set the build mode to Release.
- F. Remove any certificates emitted by your organization from the cacerts file.

**Answer: A,D,E**

#### Question No : 14

Which four properties are exposed through expression language in Oracle MAF?

- A. Device OS
- B. Device has camera
- C. Device network status
- D. Device battery capacity
- E. Device screen diagonal size
- F. Device barcode resolution

**Answer: A,B,C,D**

### Question No : 15

You have developed a MAF application and want to distribute it through public application marketplaces such as the Apple App Store and Google Play.

Identify the two essential tasks you must perform before publishing your application.

- A. Update the IDE's JDK to the latest version and repackage your MAF application.
- B. Check if Oracle made a MAF update available. If so, install it and repackage your MAF application to ensure that it conforms to the latest requirements for the target marketplaces.
- C. Edit the application's deployment profiles and set the build mode to debug. This will enable you to troubleshoot the application remotely on your customer's device.
- D. Avoid updating your MAF version in order to prevent regressions.
- E. Ensure that the settings `incvm.properties` and `logging.properties` are suitable for a production deployment.

**Answer: A,B**

### Question No : 16

In an AMX page, you want to hide/show a button based on the mobile device having a camera. Which is a valid EL expression to test for the camera?

- A. `<amx:commandButton rendered="#{deviceScope.camera}"/>`
- B. `<amx:commandButton rendered="#{device.hasCamera}"/>`
- C. `<amx:commandButton rendered="#{device.camera}"/>`
- D. `<amx:commandButton rendered="#{deviceScope.device.hasCamera}"/>`

**Answer: A**



**Question No : 17**

How does the REST data control wizard map REST web service resource URIs to HTTP method calls in MAF?

- A. Upon configuring REST service access, the application developer manually configures the REST URIs and maps them to HTTP methods.
- B. Stepping through the REST service data control wizard, the application developer references a remote Web Application Description Language (WADL) file that provides the service URIs and associated HTTP methods from which the developer can choose.
- C. The REST service data control creates only the REST connection and then generates the datacontrol definition. To configure the REST service URIs and map them to HTTP methods, the application developer needs to edit the Data Control definition file.
- D. The REST service data control maps the REST URI according to the annotations in the REST service. No user action is required.

**Answer: C**

**Question No : 18**

Select the three parameters a developer configures in the Login Connection dialog box to leverage Oracle Access Manager (OAM) Mobile and Social.

- A. URL
- B. Service Domain
- C. Instant Name
- D. Profile ID
- E. valid users and roles

**Answer: B,C,D**

**Question No : 19**

If you want to create your own custom Springboard rather than use the out-of-the-box one, which two artifacts would you need to create?

- A. unbounded task flow
- B. feature
- C. AMX page

- D. menu items
- E. side bar

**Answer: A,E**

**Question No : 20**

Which three technologies does Oracle Mobile Suite use for data shaping?

- A. XQuery
- B. XSLT
- C. MFL
- D. MAF
- E. JavaScript Schema

**Answer: A,B,C**

**Question No : 21**

Your team created an MAF application. A developer at the application user's site wants to further customize the application to modify the look and feel and to add some features.

Which type of file should you send to the developer and how would he start using it?

- A. Provide a JAR file containing your Oracle MAF Java code and he will add it as a JAR library to his MAF application.
- B. Provide an Oracle MAF Application Archive file and he will use the Create a new MAF Application from Application Archive option in JDeveloper.
- C. Provide an Oracle MAF Application Archive file and he will add this as another project in his workspace.
- D. Provide an IPA file and he will use Xcode to decompile it and further modify the code.

**Answer: C**

**Question No : 22**

You are investigating a mobile application that uses SOAP web services that invoke

queries on a database to get the data to the mobile UI. The customer complains about the application being too slow.

Which of the following changes would not improve the performance of the application?

- A. Introduce middle-tier data caching for data that does not change frequently.
- B. Switch the services from SOAP protocol to REST protocol.
- C. Reduce the number of fields returned from the service so that only the needed fields are returned.
- D. Add a layer that fetches the data on the middle tier into a Java class and then expose that class as a SOAP service.

**Answer: A**

### Question No : 23

Which statement is true about consolidating data queried from a SOAP web service and a REST-JSON web service locally on the MAF client so that it can be exposed in a single data control?

- A. The SOAP web service returns an XML response, whereas the REST service (as per the question) returns a JSON response. The two cannot be combined in a unified data control exposure.
- B. SOAP web services and REST web services with a JSON response (as per the question) can each be transformed in data objects stored in data services. A Java layer on top can be used to expose the information on a single data control interface.
- C. Data queried from different web service sources and web service types must be transformed and consolidated on the remote server to ensure unique keys and payloads.
- D. REST web services with a JSON payload (as per the question) can be accessed from the SOAP data control. The framework automatically converts the JSON string schema to an XML structure.

**Answer: D**

Reference: <https://docs.oracle.com/middleware/maf210/mobile/develop/maf-web-services.htm>

### Question No : 24