



Oracle

Exam 1z0-419

Oracle Application Development Framework 12c Essentials

Version: 7.0

[Total Questions: 87]

Question No : 1

Consider a case where an application does not respond as predicted when a user submits data. Where would you set a breakpoint to debug the issue? (Choose the best answer)

- A. the value binding for the iterator on the pagedef for the view
- B. a view activity that is used to determine where to send the user
- C. the partialTriggers property of the data bound component in the view
- D. the Apply Request Values phase of the life cycle

Answer: A

Question No : 2

Which two statements are true about attribute value bindings? (Choose two.)

- A. Multiple UI components can reference the same attribute value binding.
- B. An attribute value binding can be created only by dragging and dropping a data control attribute onto a page.
- C. Each data control attribute can have only one attribute value binding.
- D. An ADF Faces inputText and an outputText component displaying the same attribute value would typically use separate bindings.
- E. Creating an attribute value binding by dragging and dropping from the Data Controls window references, by default, an attribute value in the current row in the collection.

Answer: C,D

Question No : 3

Select two true statements about JSF components. (Choose two.)

- A. They can generate only HTML markup.
- B. They can contain other JSF components.
- C. They can be manipulated from a managed bean.
- D. They always translate to a visual component on the user interface.

Answer: B,C

Question No : 4

Consider the validation code in a Shipping entity object that is designed to ensure that the date ordered is \leq the date shipped.

```
public boolean validateDateShippedAfterDateOrderedQ {  
  
    Date DateShipped = getDateShipped();  
  
    Date DateOrdered = getDateOrdered();  
  
    if (DateShipped != null && DateShipped.compareTo(DateOrdered) < 0){  
  
        return false;  
  
    }  
  
    return true;  
  
}
```

Which entity object validation rule should you integrate this with" (Choose the best answer)

- A. compare validator on the DateShipped attribute
- B. method validator on the DateShipped attribute
- C. compare validator on the DateOrdered attribute
- D. range validator on the Shipping entity object
- E. method validator on the Shipping entity object

Answer: C

Question No : 5

Where could you write code to change the color of a JSF input text component if the value of the salary field on the same page is higher than a fixed value? (Choose the best answer.)

- A. in a backing bean
- B. in the validation for the view object's salary attribute
- C. in the CSS file that defines the skin for the application
- D. in a custom validator defined at the field level

Answer: D

Question No : 6

Consider a development organization divided into two teams, one developing ADF Business Components and related methods, and one developing the view and controller layers. What two steps would the Business Components team perform to deliver the results of their work to the other team'? (Choose two.)

- A. Share the root AppModuleImpl file on the file system or other shared location.
- B. Create an ADF Library JAR file for the model project
- C. Create a path to the ADF Library JAR file in Tools > Manage Libraries
- D. Add the ADF Library JAR to the ViewController project
- E. Share the ADF Library JAR file on the file system or other shared location

Answer: B,D

Question No : 7

Which option represents the expression you would use to determine if a user belongs to the administrator role? (Choose the best answer.)

- A. #{securityContext.userInRoleadministrator'}}
- B. adf.context.securityContext.role.administrator
- C. #{securityContextuserGrantedResource [administrator1]}
- D. sfadfSecurity.userInRoleadministrator'}}
- E. adf.context.secuhtyContext.userInRole.administrator

Answer: D

Question No : 8

Your page contains the following code that is invoked on an action by the current user;

```
<af:setPropertyListener from-"#{applicant:surname}" to-'#(...)' type-'action'7>
```

To receive the value from the to property of the afsetPropertyListener, you create a managed bean as follows

```
package view;
```

```
public class Employee { String lastName;
```

```
public void setLastName(String lastName) { this.lastName = lastName; }  
public String getLastName() { return lastName;  
}
```

In the adfc-config.xml file, the managed bean is configured as:>

```
<managed-bean>  
<managed-bean-name>emp</managed-bean-name>  
<managed-bean-class>view.Employee</managed-bean-class>  
<managed-bean-scope>pageFlowScope</managed-bean-scope>  
</managed-bean>
```

What EL expression would you write in the af:setPropertyListener "to" property to write the value to the lastName string of the Employee class? (Choose the best answer.)

IIIIIIUVUM WUUUI _v-k>p»» UW*U\«t ii,llw\,vpn. •ii«M«H-« WbUI* --- ^|

</managed-bean>

What EL expression would you write in the af:setPropertyListener "to" property to write the value to the lastName string of the Employee class? (Choose the best answer.)

- A. to="#{lastName}"
- B. B.to="#{LastName}
- C. C.to="#{pageFlowScope.emp.lastName}:"
- D. to="frfpageFlowScopeEmplastName}"
- E. to="#{emp.lastName}e
- F. to="#{pageFlowScope emp LastName}"

Answer: C

Question No : 9

Select three options that page template developers can use when creating a page template. (Choose three.)

- A. Create a page template based on a quick start layout.
- B. Create a page template based on an existing JavaServer Faces (JSF) page.
- C. Create a JavaServer Faces Fragment (JSFF) and register it as a page template.
- D. Create a page template based on an existing template.
- E. Create a page or fragment from a blank layout and register it as a page template.
- F. Create a page template from a blank layout.

Answer: B,D,F

Question No : 10

Which three statements are true about `afpanelTabbed`? (Choose three.)

- A. Tab position can be only top or bottom.
- B. Content inside a tab can stretch horizontally.
- C. You can use icons instead of text on tabs.
- D. You can have only one disclosed tab at a time.
- E. You cannot have an `afpaneftabbed` component inside one of the tabs.

Answer: B,D,E

Question No : 11

Select three benefits that ADF Data Controls provide. (Choose three.)

- A. They abstract the UI developer from the technology used to implement business logic.
- B. They reduce the need to write managed beans.
- C. They automate Ajax updates to the UI.
- D They enable drag-and-drop of data objects to UI component bindings.
- D. They directly connect your UI to the database tables.

Answer: A,B,D

Question No : 12

Identify two statements that describe the benefits of using ADF to build web applications for mobile devices. (Choose two.)

- A. Mobile devices are supported by using native code.
- B. ADF code and applications are re-used.
- C. Separate applications are required for tablets and smart phones.
- D. ADF Faces components adjust to support touch gestures and layouts.
- E. Native mobile components are used to develop a user interface.

Answer: B,D

Question No : 13

Which three options does an entity object automatically implement? (Choose three.)

- A. primary key functionality based on any column in the database that is marked as a primary key
- B. B. not-null functionality based on any column in the database that is marked as not null
- C. attribute precision based on column size
- D. all table check constraints
- E. any table triggers

Answer: A,B,C

Question No : 14

Which two are reasons why you might set the bind variables of a view object at run time programmatically rather than using the declarative features of the framework? (Choose two.)

- A. The framework can set only one bind variable declaratively on each view object query. Attempting to set more bind variables requires a programmatic solution.
- B. After a bind variable is set using the declarative method, its value is immutable unless updated programmatically.
- C. In all cases, ADF developers should code solutions rather than using declarative solutions
- D. The bind variable is derived by calling a Java method rather than receiving the value from a user.
- E. The bind variable value entered by and understandable by a user must be modified using Java code to a value that can actually be used in a query.

Answer: B,D

Question No : 15

Identify three actions you can perform by entering a URL in a browser address bar. (Choose three.)

- A. Navigate to a specific page in an unbounded task flow.
- B. Navigate to the first page in a bounded task flow with page fragments.
- C. Navigate to a page in a bounded task flow with regular pages.
- D. Navigate to the second page in a bounded task flow with regular pages.

E. Pass parameters to a bounded task flow with regular pages.

Answer: B,C,E

Question No : 16

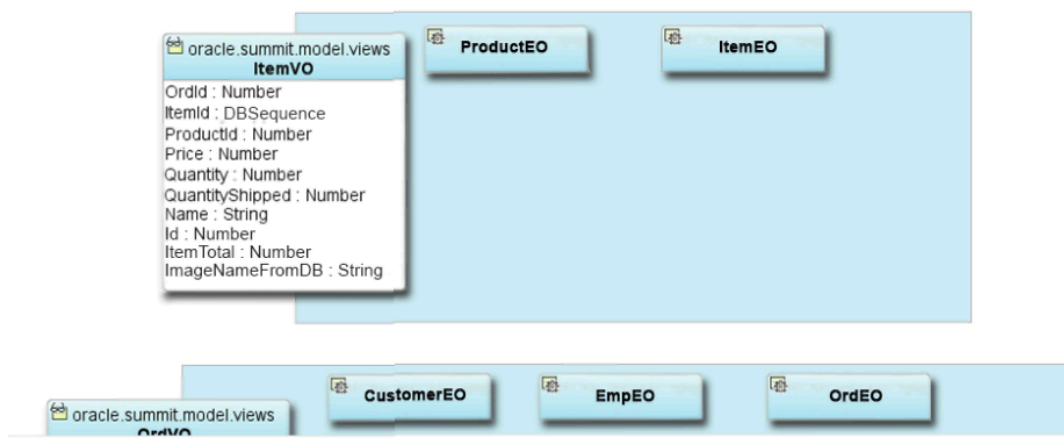
Your organization has specified that menu components should be located on the left-hand side of a page and that the main content should be displayed in the center. How do you ensure that developers adhere to this standard? (Choose the best answer.)

- A. Ask all developers to use the two-column quick start layout.
- B. Create a page template that defines the specified layout and distribute it to developers
- C. Create an ADF library that contains a collection of ADF Faces components that developers must use
- D. Create a task flow template that defines the specified layout; this will enforce the correct layout on all pages that are built from the template.

Answer: B

Question No : 17

View the Exhibit





Which option represents the steps to add a relationship between OrdVO and ItemVO and create a master-detail hierarchy for the same in the data model? (Choose the best answer.)

- A.** Select View Link from the Components window and draw a line on the diagram from ItemVO to OrdVO. Use the Application Module Editor to define the data model for the hierarchy.
- B.** Create a view link with OrdVO as the source and ItemVO as the destination and define the linked attributes. Use the Application Module Editor to define the data model for the hierarchy.
- C.** Create a view link with ItemVO as the source and OrdVO as the destination and define the linked attributes. Use the Application Module Editor to nest the OrdVO instance beneath the ItemVO instance.
- D.** Select Association from the Components window and draw a line on the diagram from OrdEO to ItemEO diagram and select Generate View Link

Answer: B

Question No : 18

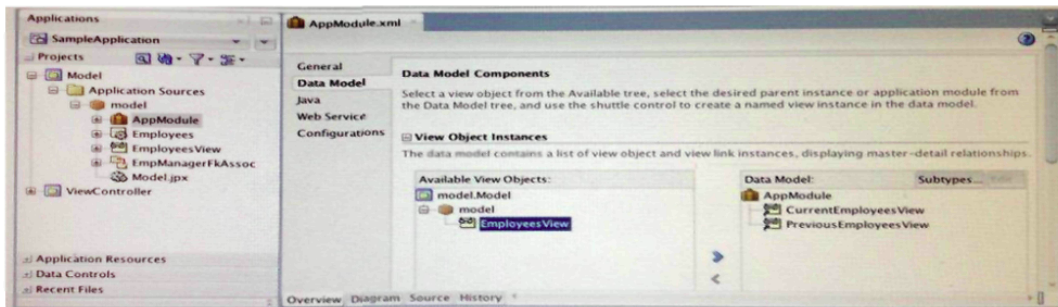
Which statement describes the Oracle implementation of model-view-controller (MVC)? (Choose the best answer.)

- A.** Oracle ADF provides a "pure" implementation of MVC. with the model layer handling page navigation and encapsulating business logic.
- B.** ADF Controller provides support for application tasks such as validation, state management, security, and business-process orchestration.
- C.** ADF bindings provide a layer of abstraction on top of the business services to enable the view and controller layers to work with different implementation
- D.** JSF Controller is the best choice for ADF Faces-based web applications because it enables you to break up an application's page flow into re-usable fli

Answer: C

Question No : 19

View the Exhibit



Which three options are true about the scenario in the Exhibit? (Choose three)

- A. Two separate view object instances allow you, at run time, to maintain two separate current row indicators on each instance respectively, to display separate records at the same time.
- B. Two separate view object instances defined through the same application module create separate entity object caches, allowing users to modify records in their own independent transactions.
- C. Two separate view object instances exposed through the application module allow you to apply separate view criteria and bind variable values to show separate result sets.
- D. Under the relating AppModuleDataControl in the JDeveloper Data Controls window, each view object instance appears as a separate selectable data collection
- E. ADF Faces restricts developers from using the same view object instance across pages, so developers at design time must create multiple separate view object instances.

Answer: A,C,D

Question No : 20

Which three statements are true about using a dvt:map component on a page? (Choose three.)

- A. You need to define a connection to a server that provides map images.
- B. You can use an exact street address to show a point theme.
- C. There is no way to display the distance between two points on a map.

D. You can modify the icon used to represent a point on a map.

Answer: A

Question No : 21

You create a new ADF Faces page called emp.jsx and bind some data controls to that page. You notice a file called empPageDef.xml. What is this file for? (Choose best Answer)

- A. it is the page definition that contains the XML representation of the page layout and the components on that page.
- B. it is a template file into which you can write any managed bean code.
- C. it is the page template definition file that represents the chosen quick start layout.
- D. it is the file that contains the definition of the bindings to your data-bound components.
- E. it defines the binding context for all pages in your application.

Answer: D

Question No : 22

When creating a bounded task flow that uses ADF Business Components, which two steps do you need to perform to enable the task flow to manage its own transaction"? (Choose two.)

- A. Define transaction properties at the task-flow level
- B. Include a phaseListener in a managed bean with methods for commit and rollback
- C. Add the application module commit and rollback operations as buttons or links on the last JSF page of the flow
- D. Define task flow return activities in the flow and associate "End transaction" attribute values with them

Answer: A,D

Question No : 23

Consider the following code:

```
<af:inputText valueChangeListener="#{myBean.handleChange}" .../>
```

```
<af:commandButton actionListener="#{myBean.doAction}" action="#"
```