



Oracle

Exam 1z0-226

Oracle EBS R12: Inventory and Order Management Fundamentals.

Version: 5.0

[Total Questions: 220]

Topic 0, A

A

Question No : 1 - (Topic 0)

Which data is provided by Oracle Purchasing to Oracle Inventory?

- A. ATP supply, planning supply, and requisition information
- B. items, requisition, and interorganization shipment information
- C. receipts/deliveries and interorganization shipment information
- D. receipts/deliveries, ATP supply, and planning supply information
- E. receipts/deliveries, units of measure, ATP supply, and planning supply information

Answer: D

Question No : 2 - (Topic 0)

For which three transaction types can picking rules be created? (Choose three.)

- A. PO Receipt
- B. Sales Order
- C. Cycle Count
- D. Work-in-process jobs
- E. Miscellaneous Receipt
- F. Move Order Replenishment
- G. Physical Inventory Adjustment

Answer: B,D,F

Question No : 3 - (Topic 0)

Identify the setup step that will allow the application user to access the Scheduling Find tab and the Scheduling Organizer window, but not other tabs within the Order Organizer-that is, Order Information, Line Information, Advanced, and Holds Information.

- A. Assign a restrictive shipping role to the user in question.
- B. Set the profile option OM: Scheduling Role to CSR only.
- C. Set the profile option OM: Scheduling Role to Scheduler only.
- D. Set the profile option OM: Scheduling Role to CSR and Scheduler.

Answer: C

Question No : 4 - (Topic 0)

Identify three valid sources of Inventory Supply. (Choose three.)

- A. Unapproved Move Orders
- B. Approved Requisition Lines
- C. Miscellaneous Transactions
- D. Approved Purchase Order Lines
- E. Sales Order Lines in Entered status
- F. WIP Work Orders in Released status
- G. Sales Orders Lines in Scheduled status

Answer: B,D,F

Question No : 5 - (Topic 0)

ACME corporation sells products that are made in batches. Often, batch runs yield quantities that are less than the customers' ordered quantity. The customers accept shipments for quantities less than order quantities and consider their order fulfilled when the shipment quantity is within ten percent of the order quantity. Which configuration enables this business rule?

- A. Set the profile option "OM: Under Return Tolerance" to 10 at the site level.
- B. Set the profile option "OM: Under Shipment Tolerance" to 10 at the site level.
- C. Set the profile option "OM: Under Shipment Tolerance" to 90 at the site level.
- D. Set the profile option "OM: Under Shipment Tolerance" to 110 at the site level.

Answer: B

Question No : 6 - (Topic 0)

An item reserved at the S/N level is associated with _____.

- A. MTL_SALES_ORDERS
- B. MTL_SERIAL_NUMBERS
- C. MTL_CMRO_ALLOC_ALL
- D. OE_ORDER_HEADERS_ALL

Answer: B

Question No : 7 - (Topic 0)

When setting up order transaction types, which is the first setup step required?

- A. Create the Order Transaction type.
- B. Create a document sequence for orders.
- C. Create the Line Transaction type for order lines.
- D. Create the Line Transaction type for return lines.
- E. Assign line flows to the Order Transaction Type.
- F. Assign the Order transaction type to the document sequence.

Answer: A

Question No : 8 - (Topic 0)

Customer acceptance is applicable for which four order types or models. (Choose four.)

- A. kits
- B. returns
- C. internal orders
- D. retro bill orders
- E. ATO/PTO models
- F. standard orders with service items
- G. standard orders with standard items

Answer: A,E,F,G

Question No : 9 - (Topic 0)

Company ABC has a factory that is set up as an inventory organization with several subinventories. Each of the subinventories has locators. The factory purchases material using a purchase order. The person who receives the purchase order does not know which subinventory and locator the material needs to go to. ABC wants the subinventory and locator to be automatically populated for that item. Which option would solve the problem?

- A. Populate the completion subinventory and locator on the routing for that item.
- B. Use the restrict subinventory and restrict locator flag on the Item Master record of that

item.

C. Populate the supply subinventory and locator fields on the Item Master record for the purchased item.

D. Use the Item Transactions Default form to create default subinventory and locators for the purchased item.

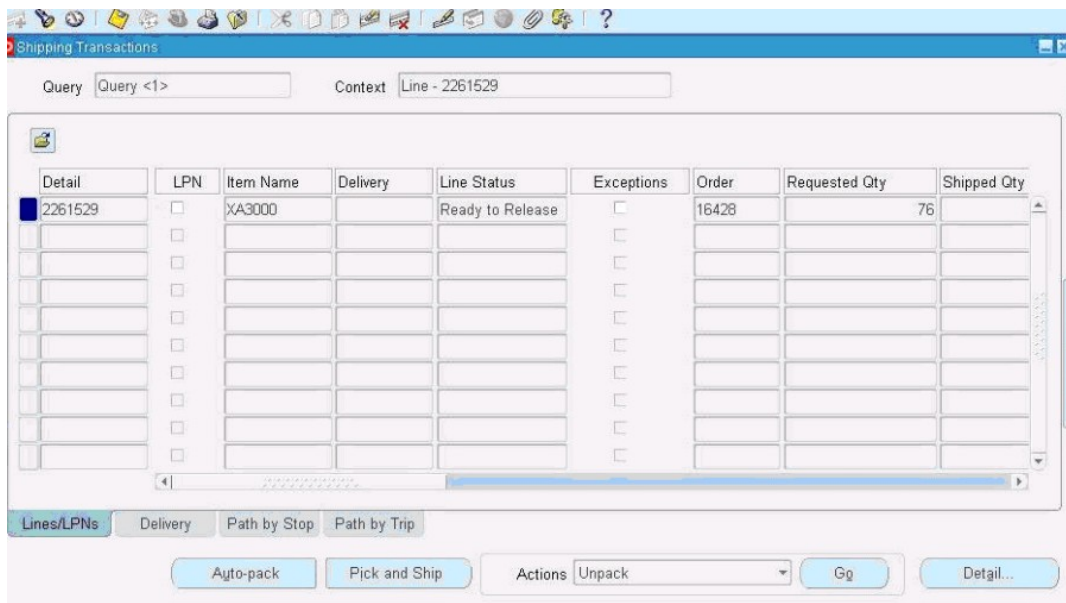
Answer: D

Question No : 10 - (Topic 0)

You are the warehouse manager for a distributor of electronics equipment. A customer service representative wants you to expedite the shipping of order number 16428 for one of your very important customers.

You go to Oracle Shipping execution to view the order status in the Shipping Transactions form. The products requested on this order do not need any packing.

View the Exhibit and choose the appropriate action.



- A. Go to Actions > Auto-Pack.
- B. Go to Actions > Autocreate Trip.
- C. Go to Actions > Assign To Deliveries.
- D. Go to Actions > Launch Pick Release.
- E. Go to Actions > Unassign From Deliveries.

Answer: D

Question No : 11 - (Topic 0)

Allowing a negative on hand balance is set at _____.

- A. the Entity Level
- B. the Subinventory Level
- C. the Operating Unit Level
- D. the Item Master Inventory Level
- E. the Inventory Organization Level

Answer: E

Question No : 12 - (Topic 0)

Your client manufactures and sells material from four different manufacturing locations. The client has these requirements:

Requirement 1:

When a customer calls to return a product, the client needs to know which plant produced the material.

Requirement 2:

Product manufactured within a plant needs to be tracked uniquely.

Which criteria would meet the clients needs?

- A. Set up lot control at the organization level and use a prefix.
- B. Set up lot control at the item level and use a prefix for the lot number.
- C. Create one locator for each product and produce the item to that locator.
- D. Create part numbers for each customer to know which part number is ordered.

Answer: A

Question No : 13 - (Topic 0)

Which three statements are true about the Move Order process? (Choose three.)

- A. Requisition and pick release orders are pre-approved.
- B. Replenishment and pick wave move orders are pre-approved.

- C. Requisition and pick release orders are pre-approved and require inspection.
- D. If no planner is specified for the item, the requisition line is automatically approved.
- E. If no approvals are required in your organization, set the inventory organization parameters Timeout Period to 0 and the Timeout Action to Approve Automatically.

Answer: B,D,E

Question No : 14 - (Topic 0)

Select the four correct statements. (Choose four.)

- A. A receiving subinventory is required in Oracle.
- B. A subinventory can span multiple organizations.
- C. A subinventory cannot be used with Locator Control.
- D. A subinventory can be a physical or a logical grouping.
- E. A subinventory location is required for all inventory transactions.
- F. A subinventory can be the primary place where items are stocked.
- G. A subinventory location can never be deleted from the Oracle inventory.

Answer: D,E,F,G

Question No : 15 - (Topic 0)

Which statement is true about delivery lines?

- A. Delivery lines cannot be split in shipping transactions.
- B. Delivery lines cannot be shipped on the same delivery if they are from different orders.
- C. Delivery lines must be booked and scheduled in Order Management in order to appear in shipping transactions.
- D. Delivery lines that have been assigned to a delivery must be back-ordered in order to assign a different delivery number.

Answer: C

Question No : 16 - (Topic 0)

You are implementing Oracle Inventory for XYZ Motor Mfg (XYZ). XYZ want to track all the motors shipped to customer ABC. They would like to generate and assign a unique number

for each motor during the sales order shipment. This would be useful for them to track the motors easily during the return process. What is the setup or process to achieve this objective?

- A. Enable lot control at the item level. Prefix the lot with AB and ship those lots to ABC customer.
- B. Enable serial control at the organization item level. Prefix serial with AB. Set up serial generation at receipt.
- C. Enable serial control at the organization item level. Prefix serial with AB. Set up serial generation as no control.
- D. Enable serial control at the organization item level. Prefix serial with AB. Set up serial generation as predefined.
- E. Enable serial control at the organization item level. Prefix serial with AB. Set up serial generation at the sales order issue.

Answer: E

Question No : 17 - (Topic 0)

Identify the two statements that directly relate to material status control. (Choose two.)

- A. A material status can be enabled or disabled as required.
- B. The material status is defaulted when using Order Management.
- C. A serial number can be assigned a status that excludes it from reservations.
- D. A material status is a combination of transactions and planning actions that are allowed.
- E. If status control is not enabled for a transaction type, the transaction type is always allowed.

Answer: D,E

Question No : 18 - (Topic 0)

The Account Alias Name flexfield cannot exceed _____ characters.

- A. 20
- B. 15
- C. 25
- D. 30
- E. 45
- F. 180

Answer: C

Question No : 19 - (Topic 0)

Which two statements are true about the Managing Shipments process? (Choose two.)

- A. You can update information pertaining to the shipment header and the shipment lines.
- B. You can access all incoming and outgoing in-transit shipments between inventory organizations associated with the current organization.
- C. In-transit shipment between inventory organizations must use the receipt routing specified at the item, organization, or system level.
- D. If you change the Expected Receipt date, you can control whether Purchasing updates Shipment Supply to reflect the new due date.

Answer: A,B

Question No : 20 - (Topic 0)

Select the three permissions for setting Basic Pricing profile options. (Choose three.)

- A. View
- B. Delete
- C. Administer
- D. Read Only
- E. No Access
- F. View and Update

Answer: A,E,F

Question No : 21 - (Topic 0)

Your client sells very high-value and low-volume exotic diamonds. They want to configure the system to meet the following requirements:

The system should recommend pricing of products based on certain predefined rules.

The system should allow the order capture person to modify existing discounts and apply additional predefined manual discounts or surcharges if necessary.

Which four setups meet the requirements? (Choose four.)

- A. For all manual modifiers, the Automatic check box must NOT be cleared.
- B. For all automatic modifiers, the Automatic check box must NOT be cleared.
- C. Profile Option QP: Return Manual Discounts must be set to Y so that all manual discounts are returned and all automatic discounts that are not considered are returned as manual discounts.
- D. Add a secondary price list.
- E. The Override check box must be selected when defining manual modifiers.
- F. The Override check box must be selected when defining automatic modifiers.

Answer: B,C,E,F

Question No : 22 - (Topic 0)

ACME requires cycle counting variance approval tolerances and the Approval Required option is set to: If out of tolerance. When the actual count falls within tolerance, Inventory _____.

- A. automatically approves and posts the cycle count adjustment
- B. automatically approves, but does not post the cycle count adjustment
- C. holds the cycle count adjustment for approval and posts it after approval
- D. holds the cycle count adjustment for a recount and does not post the adjustment

Answer: A

Question No : 23 - (Topic 0)

Identify four functions that a user can perform using the Material Workbench. (Choose four)

- A. Create move orders.
- B. Create and save queries.
- C. Change material statuses.
- D. Perform miscellaneous issues.
- E. Perform miscellaneous receipts.
- F. Perform pick confirm transactions.
- G. Perform ship confirm transactions.
- H. View material in receiving, on-hand quantities, and intransit material.

Answer: A,B,C,H

Question No : 24 - (Topic 0)

Your client is using Oracle Inventory without Warehouse Management System (WMS). It wants to establish control for several pieces of equipment using the Warehouse Control System (WCS) feature. What is the solution?

- A. Enable WCS and run the appropriate concurrent program.
- B. Create separate interfaces for each piece of equipment.
- C. Create one interface that includes all pieces of equipment.
- D. You cannot satisfy this requirement because WCS has to be used with WMS.
- E. Enabling WCS is not necessary to meet this requirement; this can be done using third-party software.

Answer: D

Question No : 25 - (Topic 0)

Select one accurate and comprehensive description of the content scope of an ABC Compile.

- A. performed at the inventory organization level only
- B. performed at the individual subinventory level only
- C. performed at the inventory organization or individual subinventory level
- D. performed at the individual subinventory level with a choice to include the same items from all subinventories in the organization

Answer: C

Question No : 26 - (Topic 0)

The serial number of an item is fully transactable and it is placed in a subinventory that has a material status, which allows only subinventory transfers. What is the cumulative effective status of the serial number?

- A. The serial number is not transactable.
- B. The serial number is fully transactable.
- C. The serial number may be transferred to another inventory organization.
- D. The serial number may be transferred to another subinventory in the same inventory

organization.

Answer: D

Question No : 27 - (Topic 0)

What is the purpose of the profile options INV: CCEOI Commit Point and INV: CCEOI Workers?

- A. to provide a baseline for generating cycle count tags
- B. to set default values for the frequency of automatic cycle count requests
- C. to set default values for the Import Cycle Count Entries from Open Interface concurrent program
- D. to limit the actions permitted when reviewing cycle counts imported from an external system using the Cycle Count Entries Open Interface

Answer: C

Question No : 28 - (Topic 0)

What is the correct sequence when defining Units of Measure (UOM)?

- A. UOM Class, UOM, UOM Conversions
- B. UOM Class, UOM Conversions, UOM
- C. UOM Conversions, UOM Class, UOM
- D. UOM Conversions, UOM, UOM Class
- E. UOM, UOM Class, UOM Conversions

Answer: A

Question No : 29 - (Topic 0)

At which level can costing methods, such as Standard Costing or Average Costing (Moving Average costing), be controlled in an inventory organization?

1. individual item level
2. subinventory level

3. inventory organization level

- A. 1 only
- B. 2 only
- C. 3 only
- D. 1 and 3
- E. 1 and 2
- F. 2 and 3
- G. 1, 2, and 3

Answer: C

Question No : 30 - (Topic 0)

Which three statements are true regarding inventory transactions? (Choose three.)

- A. The user can define new source types.
- B. The user can define new transaction actions.
- C. Transaction types are used to classify a transaction for reporting and querying purposes.
- D. A transaction source type is the combination of a transaction type and a transaction action.
- E. Transaction types identify certain transactions to be included in historical usage calculations for ABC analysis or forecasting.

Answer: A,C,E

Question No : 31 - (Topic 0)

Which two statements are true regarding Inventory replenishment methods? (Choose two.)

- A. Kanban replenishment signals are manual.
- B. Kanban replenishment signals are automatic.
- C. Reorder point planning can be performed at the subinventory level.
- D. Min-max planning considers lead time and is not based on demand projections.
- E. Replenishment counting enables you to perform counts for nontracked subinventories, and then direct Inventory to check these counts against the minimum quantities that you have specified.

Answer: A,E

Question No : 32 - (Topic 0)

Select two conditions which will permit the transfer of lot-controlled items between inventory organizations. (Choose two.)

- A. Item is lot-controlled at the subinventory level.
- B. Item is lot-controlled in either the shipping or receiving organizations.
- C. Item is lot-controlled in both the shipping and receiving organizations.
- D. Item is lot-controlled in the receiving organization, but not the shipping organization.
- E. Item is lot-controlled in the shipping organization, but not the receiving organization.

Answer: C,E

Question No : 33 - (Topic 0)

What is true about the Ship from Stock fulfillment model?

- A. Every order must be reserved.
- B. Every order can be Pick Released immediately after booking.
- C. Every order line should create a WIP job of equivalent quantity.
- D. Stock is not shipped from the factory to the warehouse until receipt of the order.

Answer: B

Question No : 34 - (Topic 0)

Which four are the functions of an Inventory Organization? (Choose four.)

- A. Items
- B. Ledger
- C. Set of books
- D. Putaway rules
- E. Costing method
- F. Workday calendar

Answer: A,B,E,F

Question No : 35 - (Topic 0)

At which two levels can ATP Rules be set? (Choose two.)

- A. the Item Master level
- B. the Subinventory level
- C. the Operating Unit level
- D. the Locator Control level
- E. the Item Organization level

Answer: A,E

Question No : 36 - (Topic 0)

ABC is a laptop manufacturing company. On an average, the company completes 10 discrete jobs daily. ABC has the following requirements:

1. When the customer returns the laptop, ABC should be in a position to identify the laptop's manufacture date and batch number.
2. Each laptop should be identified with a unique number and this should be tagged with the batch number.
3. When a customer returns a laptop, ABC decides whether it can replace it with a new laptop or repair it, by considering the age of the laptop. ABC needs to identify the aging period of the laptop.

Which setup would meet the above requirements?

- A. Using the discrete job form, the manufactured date and batch number can be identified.
- B. Enable lot and serial control at the organization item level. Enter the shelf life days in the item.
- C. Enable parent lot and child lots at the organization item level. Enter the shelf life days in the item.
- D. Enable parent lot and grade control at the organization item level. Enter the shelf life days in the item.
- E. Enable lot control at the organization item level. Set up uniqueness within inventory items in the organization parameters.

Answer: B

Question No : 37 - (Topic 0)

Which three modules use the inventory calendar for considering working days and holidays? (Choose three.)

- A. Oracle Planning
- B. Oracle Inventory
- C. Oracle Payables
- D. Oracle Bill of Materials
- E. Oracle General Ledger

Answer: A,B,D

Question No : 38 - (Topic 0)

When entering sales orders for Big City Electronics, the customer service representative wants the system to always prepopulate the Chicago warehouse as the ship from the warehouse on the sales order header and lines. Big City Electronics always gets its products shipped from this warehouse. No other customers are allowed to get their products from the Chicago warehouse. Which two configuration steps can be performed to meet this requirement? (Choose two.)

- A. Start the Workflow Background engine.
- B. Set the defaulting profile option at the site level.
- C. Set up a defaulting rule so that the Chicago warehouse is defaulted to all order headers and lines regardless of the customer.
- D. Set up a defaulting rule so that the customer's preferred warehouse as specified on the customer record is defaulted to the sales order header.
- E. Set up a defaulting rule so that every time an order is entered for Big City Electronics, the Chicago warehouse will be defaulted to the order header.
- F. Set up a defaulting rule so that every time an order line is entered for Big City Electronics, the Chicago warehouse will be defaulted to the order line from the order header.

Answer: E,F

Question No : 39 - (Topic 0)

The customer service agent of ACME wants to identify the relevant line statuses of the Drop Ship order process. Which four statuses would you identify as valid for the complete Drop Ship process? (Choose four.)

- A. Enter
- B. Picked
- C. Closed
- D. Booked
- E. Shipped
- F. Awaiting Receipt
- G. Awaiting Shipping
- H. Ready to Release

Answer: A,C,D,F

Question No : 40 - (Topic 0)

Which three are results of the Ship Confirm process when the Defer Interface flag is set to No? (Choose three.)

- A. The sales order is closed.
- B. The inventory is decremented.
- C. The sales order line is updated.
- D. The sales order is pick released.
- E. The material is transferred from the staging inventory.
- F. High-level reservations are converted to allocated reservations.

Answer: B,C,E

Question No : 41 - (Topic 0)

Identify three levels at which you can generate cycle count requests and perform cycle counting under a single cycle count name. (Choose three.)

- A. by Item Category
- B. for all subinventories
- C. by Item Category Set
- D. by bonded Warehouse
- E. for a specific subinventory
- F. by specific Stock Locator
- G. for a selected set of subinventories

Answer: B,E,G

Question No : 42 - (Topic 0)

Choose the correct statement that applies to LPNs.

- A. LPNs are organization independent.
- B. Deliveries must exist before creating LPNs.
- C. No container item is required to create LPNs.
- D. LPN numbers can be defined with a prefix, starting number, and suffix.
- E. The delivery line status should be Pick Released before it can be assigned to LPNs.

Answer: D

Question No : 43 - (Topic 0)

What are the two setup steps necessary to generate sequentially numbered packing slips for a delivery? (Choose two.)

- A. Define document sets
- B. Define delivery parameters
- C. Define document categories
- D. Define document sequences
- E. Define Auto Ship Confirm rules

Answer: C,D

Question No : 44 - (Topic 0)

The following table shows the values for quantity variance and adjustment value tolerances for an item in a cycle count:

Item Attribute Values are:

Item Standard Cost = \$10.00

Positive Quantity Variance - Tolerance 5%

Negative Quantity Variance - Tolerance 10%

Positive Adjustment Value - Tolerance \$200

Negative Adjustment Value - Tolerance \$250

Given that the system count is 100, which value needs an approval for both Positive Quantity Variance and Positive Adjustment Value?

- A. The count quantity equals 73.
- B. The count quantity equals 88.
- C. The count quantity equals 106.
- D. The count quantity equals 122.
- E. The count quantity equals 120.

Answer: D

Question No : 45 - (Topic 0)

ACME wants to update some order line attributes depending on the values of some order header attributes based on certain order line-level conditions (for example, items). The order has four lines, two of which satisfy the above criteria. Which two features of OM meet the requirement? (Choose two.)

- A. Cascading Attributes
- B. Mass Change Multi-Select
- C. Standard line-level workflow
- D. Standard update attribute API
- E. Standard header-level workflow

Answer: B,D

Question No : 46 - (Topic 0)

Identify three correct statements regarding customer acceptance setups. (Choose three.)

- A. Customer acceptance can be enabled at the inventory organization level.
- B. For enabling customer acceptance, no setup is required in OM.
- C. Customer acceptance can be enabled at the OM operating-unit level.
- D. Define assignment rules for deferral reasons at the customer, site, or item level.
- E. The first step to enable customer acceptance is to set the OM system parameter: Enable Fulfillment Acceptance.
- F. The second step of the customer acceptance setup is to define customer acceptance deferral reasons in the AR revenue management setup.

Answer: C,E,F

Question No : 47 - (Topic 0)

Identify the three correct statements regarding Multiple Organization Access Control (MOAC). (Choose three.)

- A. Responsibility can be set across operating units.
- B. MOAC allows the Operating Unit field to be left blank.
- C. The application behaves conventionally when MOAC-specific set ups are not enabled.
- D. The default Operating Unit for any Order Management Responsibility is set by the MO: Default Operating Unit Profile value.
- E. The MOAC-enabled environment will record a null value for the Operating Unit when Order is saved by the user without specifying the Operating Unit value.

Answer: A,C,D

Question No : 48 - (Topic 0)

Which Inventory table stores reservations information generated for sales orders?

- A. MTL_DEMAND
- B. MTL_SALES_ORDERS
- C. OE_ORDER_LINES_ALL
- D. MTL_GENERIC_DISPOSITIONS

Answer: A

Question No : 49 - (Topic 0)

Your customer is interested in implementing revision control for the finished goods model items. Which two requirements can be met by implementing revision control? (Choose two.)

- A. changing model functionality when on-hand quantity is available
- B. tracking design changes in other modules (BOM, Work In Process) with a different model number
- C. scrapping the old model and introducing a new model which has changes in functionality and features

- D. accommodating a slight design change in the model, where functionality and features remain the same
- E. tracking design changes in all other functions, such as Bill of Materials, Routings, Work in Process, and so on, using the same model number

Answer: D,E

Question No : 50 - (Topic 0)

Weight and physical dimensions are examples of _____.

- A. an item attribute
- B. an item parameter
- C. an item profile option
- D. an item master characteristic

Answer: A

Question No : 51 - (Topic 0)

Which statement is true about Sales Agreements?

- A. Sales Agreement Types can autogenerate forecast rules.
- B. Sales Agreement Types can require or not require approval.
- C. Sales Agreement Types can regenerate forecasted demand.
- D. Sales Agreement Types can autogenerate Certificates of Origin.

Answer: B

Question No : 52 - (Topic 0)

The Copy Lot Attributes checkbox is enabled at the organization item level. Which two statements are true? (Choose two.)

- A. This feature is specific to child lots.
- B. This feature is specific to parent lots.
- C. Lot attributes are copied between child lots.
- D. Parent lot inherits the lot attributes of the child.
- E. Child lots inherit the attributes of the parent lot.

- F. Lot attributes are copied from parent to parent lot.
- G. The feature is applicable to both child and parent lots.
- H. Lot attributes are copied from the child to the parent lot.

Answer: A,E

Question No : 53 - (Topic 0)

An item has its Lot Control attribute set to Full Control. The Active material status does not have any transaction types related to lot control enabled for material status control. This status is assigned to all lot numbers associated with the item. The subinventory where the item's lot numbers are all located also has the Active material status. How will the application respond when a user tries to submit a subinventory transfer transaction?

- A. The transaction will be accepted.
- B. An error message will be generated.
- C. The transaction will be accepted, but will be registered as a transfer to and from the same subinventory.
- D. The transaction will be accepted, but the item cost update will have to be processed separately by the user.

Answer: A

Question No : 54 - (Topic 0)

Your client has inventory organizations that belong to different operating units. All items are manufactured in one operating unit and shipped to distribution warehouses that belong to other operating units. On an exception basis, transfers may be arranged between distribution warehouses in different operating units. All transfers between operating units are at the shipping organization's standard cost plus a transfer charge percentage. Identify three inventory setup steps that are required for allowing the receiving inventory organization to correctly process receipts from inventory organizations belonging to another operating unit. (Choose three.)

- A. Define an Intercompany Price List.
- B. Define the correct unit of measure conversions for Dual UoM.
- C. Define Intercompany Relations for each pair of operating units.
- D. Define a separate Item Master Organization for each operating unit.
- E. Define Receiving Options for each inventory organization in each operating unit.
- F. Define Shipping Networks for each pair of shipping and receiving inventory organizations.

G. Ensure that the Receiving Options are uniform for all inventory organizations in each operating unit.

Answer: C,E,F

Question No : 55 - (Topic 0)

Identify three correct statements regarding prebilling acceptance. (Choose three.)

- A.** Pending prebilling is not the correct line status for shipped goods.
- B.** Invoicing should be used as a removal event for prebilling acceptance.
- C.** Customer acceptance should be used as a removal event for prebilling acceptance.
- D.** Implicit acceptance and explicit acceptance are both possible for prebilling acceptance.
- E.** Revenue recognition happens when acceptance is completed for prebilling acceptance.
- F.** Invoice generation and revenue recognition happen simultaneously during prebilling acceptance.

Answer: B,D,F

Question No : 56 - (Topic 0)

Identify three features that are available in shipping execution when Oracle Transportation Management is installed. (Choose three.)

- A.** Load Tendering
- B.** Vehicle Dispatching
- C.** Freight Consolidation
- D.** Inbound Carrier Selection
- E.** Freight Payment and Audit
- F.** GPS-enabled truck routing

Answer: A,D,E

Question No : 57 - (Topic 0)

Most orders for ACME Corporation are entered as quotes in Order Management. These quotes will then become sales orders after they get approved. What are the three necessary setups that will support this business requirement. (Choose three.)

- A. Start the Inventory Manager.
- B. Use the Quick Order Entry form.
- C. Set the Default Transaction Phase to Fulfillment.
- D. Associate a fulfillment flow with the order transaction type.
- E. Associate a negotiation flow with the order transaction type.
- F. Customize the fulfillment flow so that all approval notifications are sent to the customer service manager.

Answer: C,D,E

Question No : 58 - (Topic 0)

A beverage manufacturing company wants to view the on-hand stock of soda in liters. For all the shipping transactions, it wants to track the soda quantity in cartons and liters. What type of unit of measure (UOM) setup is required to meet this requirement?

- A. Enable only the primary unit of measure.
- B. Enable primary and pricing units of measure.
- C. Enable intraclass conversion at the organization level.
- D. Enable interclass conversion at the organization level.
- E. Set tracking UOM to primary and secondary at the item level.
- F. An item stocked in liter cannot show in carton during shipment.

Answer: E

Question No : 59 - (Topic 0)

An order has five lines with line statuses of Staged/Pick Confirmed. There is no record on the Delivery tab in the Shipping Transactions form for this order. What could be the possible resolution?

- A. Resolve the shipping exception.
- B. Enable shipping privilege for the user.
- C. Autocreate delivery from the Pick Release form.
- D. Autocreate delivery from the Delivery Transactions form.
- E. Autocreate delivery from the Shipping Transactions form.

Answer: E

Question No : 60 - (Topic 0)

You are defining the staging subinventory for your sales order pick release rule. Which flag should be enabled (checked) for the rule to work properly?

- A. Nettable
- B. Depreciable
- C. Locator Alias
- D. Asset Subinventory
- E. Allow Reservations
- F. PAR (Periodic Automatic Replenishment) Level Planning

Answer: E

Question No : 61 - (Topic 0)

What is true about (alpha) in the Exponential Smoothing Forecast (ESF) method?

- A. (alpha) equals the old forecast.
- B. (alpha) is always greater than one.
- C. (alpha) is calculated by Oracle Inventory.
- D. (alpha) is multiplied by the forecast error to determine the adjustment.
- E. (alpha) equals the old forecast plus a portion of the forecast error from the previous period.

Answer: D

Question No : 62 - (Topic 0)

Setting the Inventory parameter Auto Create Lot UOM Conversion to "Yes" _____.

- A. creates lot-specific UOM conversions for items under dual UOM control across the inventory organization
- B. creates lot-specific UOM conversions for items under dual UOM control across lot-controlled subinventories
- C. creates lot-specific UOM conversions for items under dual UOM control across lot-controlled inventory locators
- D. creates lot-specific UOM conversions for items under dual UOM control across the item master inventory organization

Answer: A

Question No : 63 - (Topic 0)

Select three ways to deactivate credit checking on an order. (Choose three.)

- A. Disable the credit checking defaulting rule.
- B. Disable the credit checking flag at the operating-unit level.
- C. Disable the Credit Card Security Code system parameter.
- D. Use an order type that does not have an assigned credit rule.
- E. Use payment terms for which the Credit check box is not selected.
- F. Define the customer profile so that the Credit check box is not selected.

Answer: D,E,F

Question No : 64 - (Topic 0)

ACME requires multiple roles to satisfy the needs of customer service representatives (CSRs), warehouse staff, and shipping staff. Roles must be assigned to responsibilities, not users, to minimize overhead. Sales orders are managed by CSRs centrally in each operating unit. The US operating unit has two warehouses; there is only one warehouse in the Canadian operating unit. Each CSR is responsible to schedule and release its own sales orders to the warehouses. The warehouse staff picks and prepares material for shipment (it does not want to use the packing features of shipping execution). The shipping staff manages deliveries and plans departures. Which group's role should have the Data Access-level Edit on the Deliveries tab?

- A. shipping staff
- B. warehouse staff
- C. order entry staff
- D. procurement staff
- E. customer service representatives

Answer: A

Question No : 65 - (Topic 0)

ACME's standard freight charge is a ten-percent markup of actual handling costs. To ensure the correct calculation of freight charges, which formula, qualifier context, and qualifier attribute will you use? (Choose two.)

- A. Create a formula to calculate the markup Freight Handling charge as (0.1 times the Handling Cost).

- B. Create a formula to calculate the markup Freight Handling charge as (1.1 times the Handling Cost).
- C. Use a Qualifier Context of Terms and a Qualifier Attribute of Freight Terms with a line-level modifier line.
- D. Use a Qualifier Context of Terms and a Qualifier Attribute of Freight Terms with an order-level modifier line.
- E. Use a Qualifier Context of Order and a Qualifier Attribute of Freight Type Code with a line-level modifier line.
- F. Use a Qualifier Context of Order and a Qualifier Attribute of Freight Type Code with an order-level modifier line.

Answer: B,E

Question No : 66 - (Topic 0)

Lot-level UOM conversions require _____.

- A. lot control at the item level
- B. an item-specific conversion factor
- C. lot control at the predetermined Locator level
- D. lot control at the predetermined Subinventory level
- E. that the item master be linked to Order Management for sales order entry

Answer: B

Question No : 67 - (Topic 0)

Company X has a single Inventory Organization. It wants to monitor aged material. Specifically, it needs to ensure that its products have the most current calibration. Profile Option INV: FIFO for Original Receipt Date has two selections. Which selection is correct?

- A. INV: FIFO for Original Receipt Date = No. Original receipt date is lost upon issue.
- B. INV: FIFO for Original Receipt Date = Yes. Original receipt date would be retained until material is picked for shipping.
- C. INV: FIFO for Original Receipt Date = Yes. Original receipt date would be retained until material is issued out of inventory.
- D. INV: FIFO for Original Receipt Date = No. Original receipt date is retained until new inventory is positioned in the same locator.
- E. INV: FIFO for Original Receipt Date = Yes. Original receipt date would be retained until material is moved to nonnettable subinventory.