



Oracle

Exam 1z0-140

oracle9i forms developer:new features

Version: 5.0

[Total Questions: 98]

Topic 0, A

A

Question No : 1 - (Topic 0)

The Oracle Application Server is installed on your machine. In Forms Builder, you open the HResource form and connect to the HR database. You also edit your Forms Builder run-time preferences and click Set Default.

To test the HResource form module, you click Run Form and receive the error message FRM-10142 (The HTTP listener is not running). What action should you take?

- A. Start an OC4J instance.
- B. Start the Oracle HTTP Server.
- C. Run the batch file STOPINST.BAT.
- D. Start the browser before clicking Run Form.
- E. Generate the form and move the .fmx file to the Oracle Application Server deployment directory.

Answer: A

Question No : 2 - (Topic 0)

View the Exhibit.

You are upgrading a form that was written in Forms 6i. You open the form in the latest version of Oracle Forms Builder. The data block of this form is shown in the exhibit as it appears in the object navigator of Forms Builder.

What must you do to this form before it can compile successfully?



- A. Delete the image item.

- B. Delete the sound item.
- C. Convert the check boxes to radio groups.
- D. Recode the population of the image item so that it does not attempt to load images from the operating system.
- E. Use the FBean package to recode the functionality of the bean area item.

Answer: B

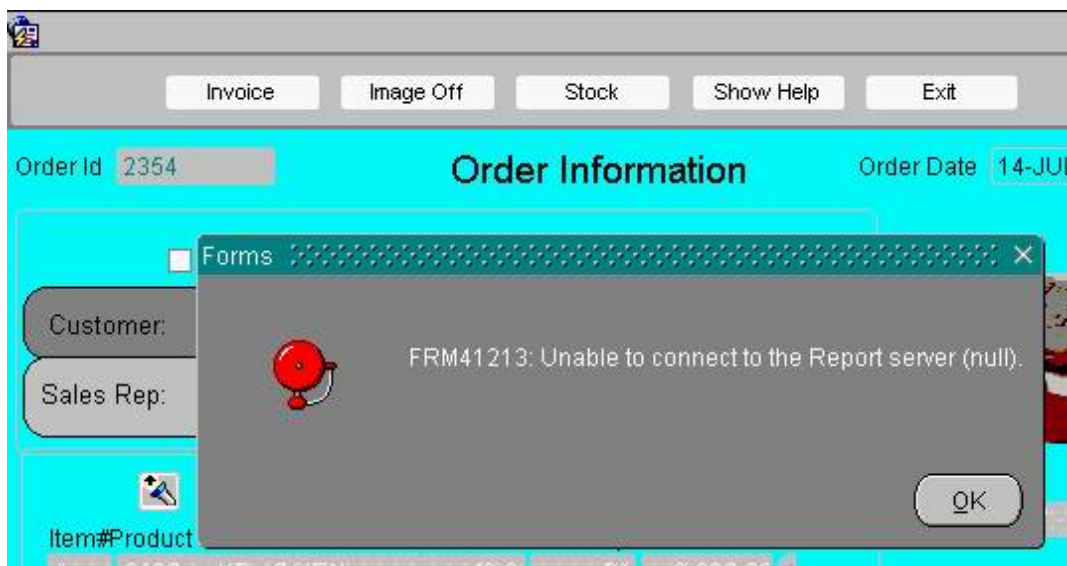
Question No : 3 - (Topic 0)

View the Exhibit.

The Orders form was developed using Forms 6i and uses RUN_PRODUCT to call an invoice report. You used the Oracle Forms Migration Assistant to upgrade the Orders form, which changed the RUN_PRODUCT call to use RUN_REPORT_OBJECT.

You run the upgraded form and click the Invoice button, which invokes the report. However, you receive the error message that is shown in the exhibit.

What should you do to avoid this problem?



- A. Set the REPSERV environment variable before running the Migration Assistant.
- B. There is no way for the Migration Assistant to know the reports server name, so you must modify the form after upgrading it to specify which reports server to use.
- C. Run the Migration Assistant with the REPSERVNAME command line argument to specify the reports server.
- D. Set the default REPORTS_SERVERNAME Migration Assistant property to specify the

name of the reports server to be used when converting RUN_PRODUCT calls.

E. Set the SERVER= property in the Reports Servlet properties file; the Migration Assistant looks here to find the default reports server when converting RUN_PRODUCT calls.

Answer: D

Question No : 4 - (Topic 0)

Which statement about the Java Design-Time API (JDAPI) is true?

- A. It is built on top of the C Forms API.
- B. It replaces the C Forms API (CFAPI) that was available in Forms 6i.
- C. It enables invocation of the C Forms API from a Java program.
- D. It is unrelated to the C Forms API because its functionality is completely different.

Answer: A

Question No : 5 - (Topic 0)

You are using Pluggable Java Components to modify the appearance and behavior of certain input items. These modifications cannot be done in the Property Palette of these items.

Which built-in can you use to accomplish this task?

- A. SET_ITEM_INSTANCE_PROPERTY
- B. FBEAN.SET_PROPERTY
- C. SET_ITEM_PROPERTY
- D. SET_CUSTOM_PROPERTY

Answer: D

Question No : 6 - (Topic 0)

Which Oracle Forms built-in can be used to change the display of a single DATETIME value from one time-zone region to another without affecting other DATETIME items?

- A. DISPLAY_ITEM
- B. ADJUST_TZ
- C. SET_APPLICATION_PROPERTY with the BUILTIN_DATE_FORMAT argument
- D. SET_APPLICATION_PROPERTY with the DATETIME_LOCAL_TZ argument
- E. SET_APPLICATION_PROPERTY with the PLSQL_DATE_FORMAT argument

Answer: B

Question No : 7 - (Topic 0)

You have enabled debug-level Servlet Logging for the Forms Servlet for all users of an application. At the end of the work day, you want to analyze the log file. Which file do you examine?

- A. SERVER.LOG
- B. APPLICATION.LOG
- C. DEFAULT-WEB-ACCESS.LOG
- D. GLOBAL-APPLICATION.LOG

Answer: B

Question No : 8 - (Topic 0)

Which three tasks can be performed by the XML2Forms utility? (Choose three.)

- A. generating an XML schema file
- B. parsing of XML using Oracle XDK SAXParser
- C. creating a Forms object for each XML element
- D. validating XML against the Forms XML schema

Answer: B,C,D

Question No : 9 - (Topic 0)

There are several forms in your Forms 6i application that perform SELECT statements in triggers and program units to extract some information from an ARCHIVES table.

As part of the upgrade to the latest version of Oracle Forms, you have split the ARCHIVES table by year. The current table is now called ARCHIVES2001, so you want to change all

occurrences of ARCHIVES in your PL/SQL code to ARCHIVES2001.

Which file would you modify so that the Oracle Forms Migration Assistant performs the substitution when you use this tool to upgrade your application?

- A. RULES.PROPERTIES
- B. FORMS90.PROPERTIES (or FORMS.PROPERTIES)
- C. CONVERTER.PROPERTIES
- D. LOCALSTRINGS.PROPERTIES
- E. SEARCH_REPLACE.PROPERTIES

Answer: E

Question No : 10 - (Topic 0)

A user runs, and then exits, the Payroll forms session over the Web. The same user then starts a Sales forms session over the Web. The Sales forms application uses two form modules and two custom menu modules. How many Forms applets are required?

- A. One Forms applet is required to run any Oracle Application Server Forms Services application.
- B. Five Forms applets are required. Separate Forms applets must be deployed for each Oracle Application Server Forms Services form or menu module.
- C. Three Forms applets are required. A Forms applet is required for each form module in a multiple-form Oracle Application Server Forms Services session.
- D. Two Forms applets are required. Separate Forms applets must be deployed for each Oracle Application Server Forms Services application.
- E. Four Forms applets are required. One Forms applet is used to start each Oracle Application Server Forms Services application. Additional Forms applets are required for each form module using a custom menu.

Answer: A

Question No : 11 - (Topic 0)

What happens when you click Run Form Debug in Forms Builder?

- A. The form runs on your local machine using a debug executable client.
- B. The form runs in a three-tier environment using the application server URL that you

specify in run-time preferences.

C. The form runs in a three-tier environment using the application server URL that you specify in debug preferences.

D. The form runs in a simulated three-tier environment using an applet viewer that is included with the product to enable debugging.

Answer: B

Question No : 12 - (Topic 0)

You are designing a menu that attaches to multiple forms in your application, and you want to add a menu item that enables remote debugging of the application. Which built-in must you include in the menu item code?

A. BREAK

B. MESSAGE

C. DEBUG_MODE

D. DEBUG.ATTACH

E. DEBUG.SUSPEND

F. DEBUG.INTERPRET

Answer: D

Question No : 13 - (Topic 0)

You are running a multiple-form application. The Customers form invokes the Orders form. When the Orders form launches, it displays orders for only the active customer from the Customers form.

Forms exchange data with the :GLOBAL.CUSTOMER_ID variable.

The Orders form should query orders for a customer only once after being launched from the Customers form. Which built-in helps you do this by setting the ONETIME_WHERE property to refer dynamically to the GLOBAL.CUSTOMER_ID?

A. SET_APPLICATION_PROPERTY

B. SET_FORM_PROPERTY

C. SET_BLOCK_PROPERTY

D. SET_RECORD_PROPERTY

Answer: C

Question No : 14 - (Topic 0)

Which list contains only those methods for using Java in Forms?

- A. JavaBeans, PJC's, Java Importer, JDAPI
- B. JavaBeans, PJC's, Java Stored Procedures, JDAPI
- C. JDAPI, PJC's, Java Importer, Java Stored Procedures
- D. JavaBeans, PJC's, Java Importer, Java Stored Procedures

Answer: D

Question No : 15 - (Topic 0)

Your Oracle HTTP Server is configured for the default port. You want to ensure that your Forms Listener Servlet can manage communication between the Forms Java Client and Oracle Application Server Forms Services. What action is required?

- A. Configure Forms Listener Servlet to listen on the default port 7000.
- B. Configure Forms Listener Servlet to listen on the default port 1949.
- C. Configure Forms Listener Servlet to listen on the default port 80.
- D. No action is required.

Answer: D

Question No : 16 - (Topic 0)

You are upgrading a Forms 6i application that was originally written in Forms 2.3. It uses LOVs extensively, many of which are the old-style LOVs that are not supported in the latest version of Oracle Forms. Which statement about this upgrade is true?

- A. The upgrade process automatically converts each old-style LOV by creating a record group and basing the LOV on that record group.
- B. You should convert the old-style LOVs in Forms6i prior to upgrading the application to the latest version of Oracle Forms.
- C. You can upgrade the application to the latest version of Oracle Forms and then manually convert the LOVs to record group LOVs so that the forms can compile successfully.
- D. You should have converted the old-style LOVs in Forms 4.5, because they cannot be

edited in Forms 6i and will prevent the application from upgrading successfully.

Answer: A

Question No : 17 - (Topic 0)

On Windows platforms, which two programs in the \BIN directory enable you to upgrade applications from Forms 6i to the latest version of Oracle Forms? (Choose two.)

- A. IFCMP90.EXE (or FRMCMP.EXE)
- B. IFWEB90.EXE (or FRMWEB.EXE)
- C. D2SCV90.EXE (or D2SCV.EXE)
- D. FNCHK90.EXE (or FNCHK.EXE)
- E. IFXML2F90.BAT (or FRMXML2F.BAT)
- F. RWBUILDER.EXE
- G. RWCONVERTER.EXE
- H. IFPLSQLCONV90.BAT (or FRMPLSQLCONV.BAT)

Answer: A,H

Question No : 18 - (Topic 0)

Which statement describes LOVs in forms that were developed in Forms 6i (or earlier versions)?

- A. LOVs required that a condition be specified before record retrieval.
- B. LOVs did not allow users to specify a condition before record retrieval.
- C. LOVs were not cancelable in cases where it was taking a long time to retrieve records.
- D. Validation on the item could not be performed to force the user to enter only those values retrieved by the LOV.

Answer: C

Question No : 19 - (Topic 0)

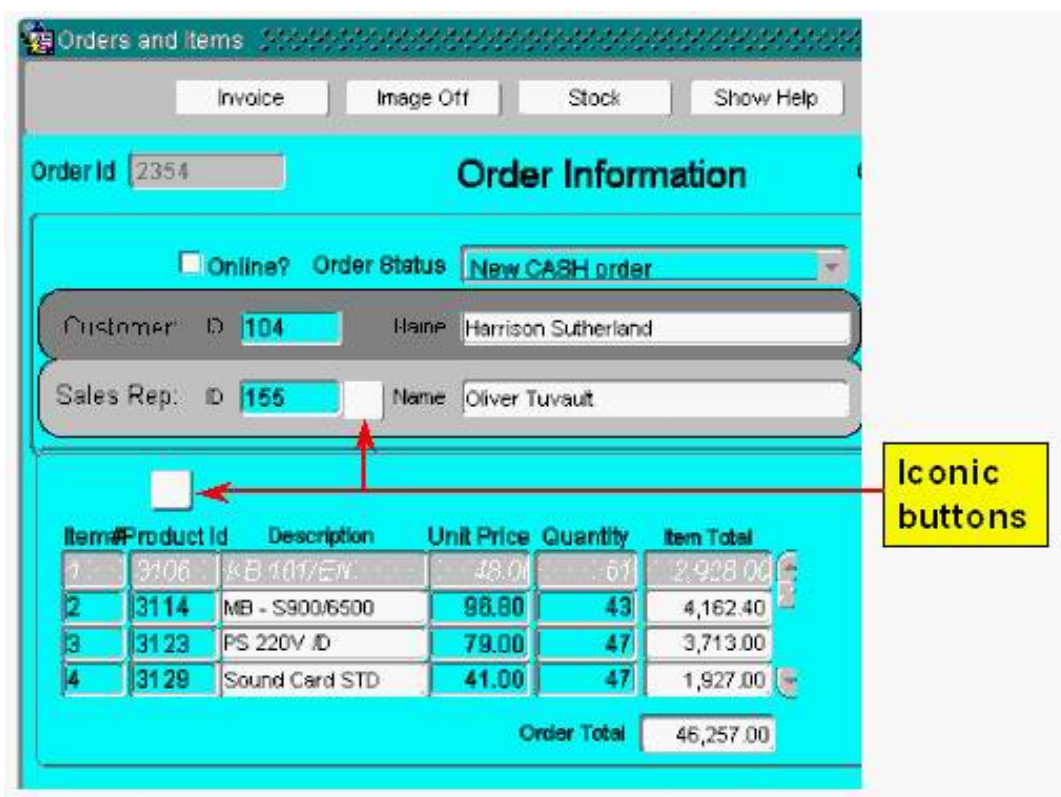
View the Exhibit.

You are upgrading an application to the latest version of Oracle Forms that was previously

deployed only in client/server. When you test the upgraded application, you notice that icons do not appear on the buttons (as shown in the exhibit). When you ran the application in client/server with Forms 6i, icons appeared on the buttons

Because there are many icon buttons, you are concerned about generating frequent round-trips to the application server to display icons on the buttons, so you convert the icons to .gif files and place them in a JAR file. You modify the Forms Servlet configuration file to set IMAGEBASE to CODEBASE and include the name of the JAR file in the appropriate ARCHIVE parameter.

Where should you locate the JAR file on your application server machine so that it is downloaded to the client to reduce subsequent network traffic?



- A.** Place the icon JAR file in any directory on the application server machine, and set the UI_ICON environment variable to the physical location of the JAR file.
- B.** Place the icon JAR file in the JAVA subdirectory of the FORMS90 (or FORMS) directory under the iAS \$ORACLE_HOME on the application server machine.
- C.** Place the icon JAR file in any virtual directory on the application server machine, and set ICONPATH in the Forms registry file to the virtual directory where the JAR file is located.
- D.** Place the icon JAR file in any directory on the application server machine, and set the FORMS90_PATH (or FORMS_PATH) environment variable to include that directory.

Answer: B

Question No : 20 - (Topic 0)

How does the Oracle HTTP Server handle a request for a Forms application?

- A. It routes the request by the Jserv component to OC4J.
- B. It routes the request by the mod_oc4j component to OC4J.
- C. It routes the request by the mod_oc4j component to the Forms CGI.
- D. It routes the request by the Jserv component to Forms Listener Servlet.
- E. It routes the request by the Jserv component to Oracle Application Server Forms Services.

Answer: B

Question No : 21 - (Topic 0)

How is the user interface of an Oracle Forms application displayed?

- A. An embedded Forms applet renders the user interface in the user's Web browser.
- B. OC4J sends the Forms Runtime Engine user interface back to the user's Web browser as an HTML page.
- C. A downloaded Forms applet communicates with a separate Forms Listener to obtain user interface metadata.
- D. OC4J sends the Forms Listener Servlet user interface back to the user's Web browser as an HTML page.
- E. OC4J sends the Forms Servlet user interface back to the user's Web browser as an HTML page.

Answer: A

Question No : 22 - (Topic 0)

Which two Oracle Application Server components run in the OC4J container? (Choose two.)

- A. Forms applet
- B. Forms Servlet
- C. Oracle JInitiator

- D. Forms Runtime Session
- E. Forms Listener Servlet
- F. Oracle HTTP Server

Answer: B,E

Question No : 23 - (Topic 0)

A consultant gave you a PAYROLL.ENV file that contains the search path for the Payroll Forms application modules. You must now customize the existing implementation of Forms Services. How can you do this without affecting the configuration of your other Forms applications?

- A. Place the PAYROLL.ENV file in the same folder as your DEFAULT.ENV file. Delete DEFAULT.ENV and rename PAYROLL.ENV as DEFAULT.ENV.
- B. Place the PAYROLL.ENV file in the same folder as your DEFAULT.ENV file. Edit the Forms Servlet configuration file and set envfile=Payroll.env.
- C. Copy the Forms Servlet configuration file to a new "Payroll" Forms Servlet configuration file. Edit the "Payroll" Forms Servlet configuration file, and set envfile=Payroll.env. Update the OC4J configuration file, and set the configFileName property to the name of the new "Payroll" Forms Servlet configuration file.
- D. Copy the Forms Servlet configuration file to a new "Payroll" Forms Servlet configuration file. Edit the "Payroll" Forms Servlet configuration file and set envfile=Payroll.env. Edit the Oracle HTTP Server configuration and create a virtual path mapping for the new "Payroll" Forms Servlet configuration file.
- E. Place the PAYROLL.ENV file in the same folder as your DEFAULT.ENV file. Edit the Forms Servlet configuration file. Add a Configuration section called [Payroll]. For [Payroll], set envfile=Payroll.env.

Answer: E

Question No : 24 - (Topic 0)

You are running a form in debug mode and you begin to step through the code of a lengthy subprogram. After stepping through a few lines of its code, you realize that the error comes not from the code in that particular subprogram but from code that is executed after it. At this point, what is the most efficient action to take?

- A. Click Step Over to step over the execution of the subprogram.
- B. Click Stop, set a breakpoint immediately after the subprogram code is called, and run the form in debug mode again.
- C. Click Step Out to resume stepping through code after the subprogram is called.
- D. Open the Stack panel, select the previous stack frame, set a breakpoint following the line that calls the subprogram, and click Go.

Answer: C

Question No : 25 - (Topic 0)

You want to test your forms in a separate window from the browser window containing the Forms applet. What changes in your Forms Builder session would make this possible?

- A. Define a new configuration section [appview] in your FORMSWEB.CFG file.
Set the SEPARATEFRAME parameter to True.
Select Edit/Preferences in the Forms Builder.
Update the Application Server URL to include reference to [appview].
- B. Define a new configuration section [appview] in your FORMSWEB.CFG file.
Set the SEPARATEFRAME parameter to True.
Select Edit/Preferences in the Forms Builder.
Update the Web Browser Location to include reference to [appview].
- C. Define a new configuration section [appview] in your FORMSWEB.CFG file.
Set the SEPARATEFRAME parameter to the path and name of the Java Appletviewer.
Select Edit/Preferences in the Forms Builder.
Set the Web Browser Location to include reference to [appview].
- D. Define a new configuration section [appview] in your FORMSWEB.CFG file.
Set the SEPARATEFRAME parameter to the path and name of the Java Appletviewer.
Select Edit/Preferences in the Forms Builder.
Set the Application Server URL to include reference to [appview].
- E. Your forms cannot be tested in a separate window from the browser window that contains the Forms applet.

Answer: A

Question No : 26 - (Topic 0)

You created a form in Forms Builder and you want to store it in the database, but you cannot find an option to save it to the database. How can you enable the option to save modules to the database?

- A. There is no option to save modules to the database in Oracle Forms.
- B. Create the Oracle Forms database tables to enable the option to save to the database.
- C. Set an environment variable that is new in Oracle Forms prior to starting Forms Builder to indicate your preference to save modules to the database.
- D. Access the Preferences dialog box from the Edit menu in Oracle Forms (rather than from the Tools menu, as in previous versions), and then click the Access tab to set the module access to Database.

Answer: A

Question No : 27 - (Topic 0)

To apply corporate standards to the look and feel of an application, you must make the same changes to hundreds of forms. These forms do not inherit objects from any object library or from other forms.

What is the quickest way to accomplish this task?

- A. Make use of an API (like JDAPI) to apply the standards.
- B. Create an object group of the standard objects, and then copy the object group to all the forms.
- C. Write a script that makes use of the Migration Assistant to apply changes to all the forms.
- D. Create an object library of all the objects needed to apply the standards, and then inherit these objects in all the forms that need to be modified.

Answer: A

Question No : 28 - (Topic 0)

View the Exhibit.

You are debugging an application remotely, and you have obtained host and port information from the user. Which menu option from the Debug menu (shown in the exhibit) should you choose to enable you to enter the host and port information?