



**Vendor:** Citrix

**Exam Code:** 1Y0-A17

**Exam Name:** Implementing Citrix XenDesktop 4

**Version:** DEMO

1. What is the role of the pool management service?

- A. Clones virtual machines
- B. Turns virtual machines on and off
- C. Streams the virtual machine to the users
- D. Assigns users to the correct virtual machine

**Answer: B**

2. Which component of the XenDesktop architecture uses Microsoft Active Directory, to find the controllers that constitute a farm?

- A. Desktop Receiver
- B. Domain Controller
- C. Virtual Desktop Agent
- D. Desktop Delivery Controller

**Answer: C**

3. An administrator needs to allow each help desk worker in an environment access to one virtual desktop

Which two types of devices should the administrator configure to allow each help desk worker to connect to a virtual desktop? (Choose two)

- A. Thin clients
- B. Fat client devices
- C. Remote computers
- D. Repurposed computers

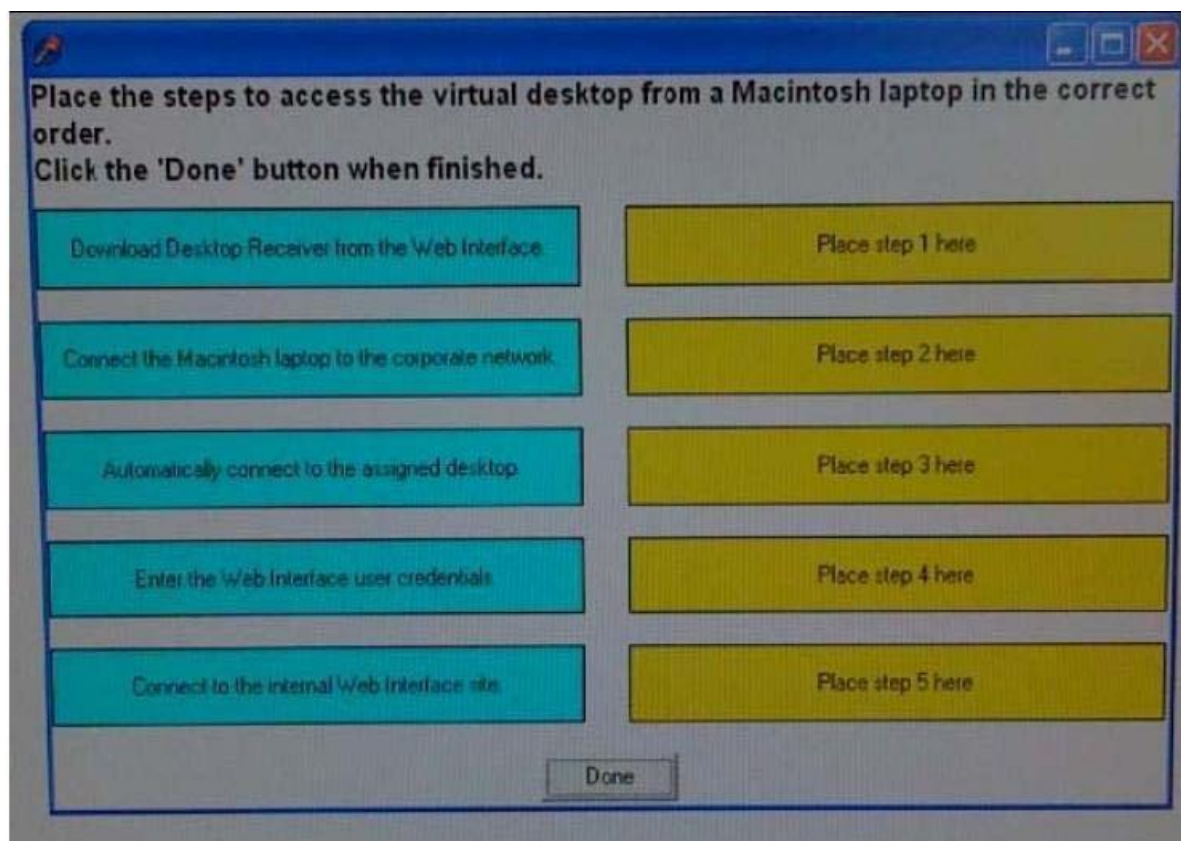
**Answer: BD**

4. An administrator needs to configure pooled desktops for a large number of users and would like to automate this process. To complete this task the administrator will need to use \_\_\_\_\_ and \_\_\_\_\_ (Choose the two correct options to complete the sentence)

- A. XenServer
- B. XenCenter
- C. Provisioning Services
- D. XenDesktop Setup Wizard
- E. Delivery Services console

**Answer: CD**

5. A user needs to access a virtual desktop from a Macintosh laptop on the corporate network for the first time Click the Task button to place the steps to access the virtual desktop from a Macintosh laptop in the correct order Click the Exhibit button for instructions on how to complete a Drag and Drop item? What is the correct order of steps to access the virtual desktop from a Macintosh laptop?



**Answer:**

- 1 Connect the Macintosh laptop to the corporate network
- 2 Connect to the internal Web Interface site
- 3 Enter the Web Interface user credentials
- 4 Download Desktop Receiver from the web interface
- 5 Automatically connect to the assigned desktop

6. Scenario: a user is attempting to access a virtual desktop The Web interface sent an .ICA file, but no ICA connection was established. Which component of the XenDesktop architecture has failed to communicate with the virtual desktop?

- A. Data Store
- B. Desktop Receiver
- C. Virtual Desktop Agent
- D. Desktop Delivery Controller

**Answer: B**

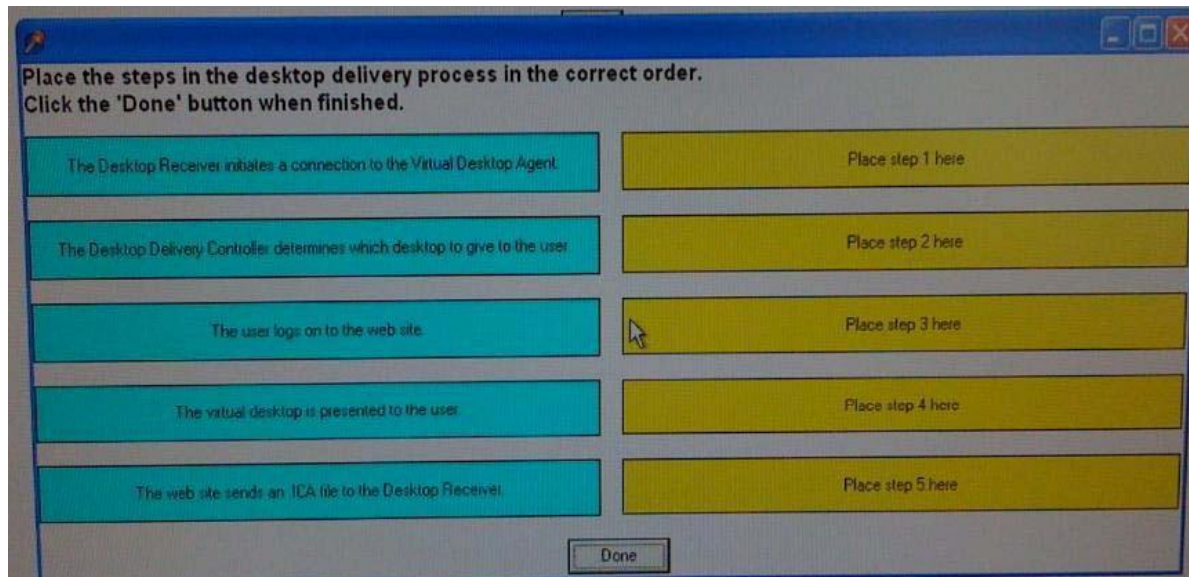
7. Which component of the XenDesktop architecture has failed to communicate with the virtual desktop?

Which issue can the Profile Management feature address in a XenDesktop implementation?

- A. Inability of users to stch between multiple profiles
- B. Inability of settings to be saved against mandatory profiles
- C. Profile bloat because extraneous files are copied to the profile
- D. Printing failure because printer properties are not updated at each logon

**Answer: C**

8. A user is attempting to access a virtual desktop remotely Click the Task button to place the steps in the desktop delivery process in the correct order Click the Exhibit button for instructions on how to complete a Drag and Drop item? What is the correct order of steps in the desktop delivery process?



**Answer:**

- 1 The users logs on the web site
- 2 The desktop delivery controller determines which desktop to give to the user
- 3 The web site sends an ICA file to the Desktop Receiver
- 4 The Desktop Receiver initiates a connection to the Virtual Desktop Agent
- 5 The virtual desktop is presented to the user

9. An administrator needs to configure existing hardware that will be repurposed to support connections to virtual desktops. How should the administrator allow users to connect to their desktops in this environment?

- A. Using domain-joined Windows XP Embedded on a LAN and connecting through a XenDesktop Ser4lces site to a virtual desktop in full-screen-only mode
- B. Using a Windows XP device on a LAN and connecting through a XenDesktop Web site to a virtual desktop with a Citrix Desktop Receiver window and a toolbar
- C. Using a non-domain-joined Windows XP Embedded device on a LAN and connecting through a Desktop Appliance Connector site to a virtual desktop in full-screen-only mode
- D. Using a Windows XP device that connects remotely using Access Gateway through a XenDesktop Web site to a virtual desktop with a Citrix Desktop Receiver window and a toolbar

**Answer: A**

10. An administrator changed the settings on the Desktop Delivery Controller so that it uses an assigned static IP address instead of DHCP. Which result, when verified by the administrator, shows that the change has been made and ensures that the virtual machines can successfully register?

- A. The firewall ports have been changed
- B. The Farm GUID has been added to the registry

C. The DNS has been updated with the new IP address

D. The Desktop Delivery Controller Service has been restarted

**Answer: C**