



Vendor: Microsoft

Exam Code: 070-462

**Exam Name: Administering Microsoft SQL Server 2012
Databases Exam**

Version: Demo

QUESTION 1

You administer a Microsoft SQL Server database.

Users report that an application that accesses the database displays an error, but the error does not provide meaningful information. No entries are found in the SQL Server log or Windows event logs related to the error.

You need to identify the root cause of the issue by retrieving the error message.

What should you do?

- A. Flag all stored procedures for recompilation by using `sp_recompile`.
- B. Create an Extended Events session by using the `sqlserver.error_reported` event.
- C. Create a Performance Monitor session to capture the `SQLServer:SQL Errors` object.
- D. Create a SQL Profiler session to capture all `ErrorLog` and `EventLog` events.

Correct Answer: B

Explanation:

Event `sqlserver.error_reported`: This event gets fired every time that an error happens in the server.

QUESTION 2

You administer a Microsoft SQL Server database.

You create an availability group named `haContosoDbs`. Your primary replica is available at `Server01\Contoso01`.

You need to configure the availability group to prevent data loss. In the event of a database failure, the designed secondary database must come online automatically.

Which Transact-SQL statement should you use?

- A. `ALTER AVAILABILITY GROUP haContosoDbs MODIFY REPLICA ON `Server01\Contoso01` WITH (AVAILABILITY_MODE=ASYNCHRONOUS_COMMIT, FAILOVER_MODE=AUTOMATIC)`
- B. `ALTER AVAILABILITY GROUP haContosoDbs MODIFY REPLICA ON `Server01\Contoso01` WITH (AVAILABILITY_MODE=ASYNCHRONOUS_COMMIT, FAILOVER_MODE=MANUAL)`
- C. `ALTER AVAILABILITY GROUP haContosoDbs MODIFY REPLICA ON `Server01\Contoso01` WITH (AVAILABILITY_MODE=SYNCHRONOUS_COMMIT, FAILOVER_MODE=AUTOMATIC)`
- D. `ALTER AVAILABILITY GROUP haContosoDbs MODIFY REPLICA ON`

```
`Server01'\Contoso01'WITH  
(AVAILABILITY_MODE=SYNCHRONOUS_COMMIT,FAILOVER_MODE=MANUAL)
```

Correct Answer: C

QUESTION 3

You are the administrator of a Microsoft SQL Server database server.

Some applications consume significant resources. You need to manage the server workload by restricting resource-intensive applications

You need to dynamically limit resource consumption.

What should you do?

- A. Create a new Plan Guide with a Scope Type of sql and define the resource limits for each application.
- B. Enable the Resource Governor, and then configure Resource Pools, Workload Groups, and Classifier Function.
- C. Configure SQL Activity Monitor to define resource limits for each application type.
- D. Configure Extended Events to monitor and restrict resource limits allowed by each application type.

Correct Answer: B

Explanation:

SQL Server Resource Governor is a feature that you can use to manage SQL Server workload and system resource consumption. Resource Governor enables you to specify limits on the amount of CPU, physical IO, and memory that incoming application requests can use.

The following three concepts are fundamental to understanding and using Resource Governor:

References:

<https://docs.microsoft.com/en-us/sql/relational-databases/resource-governor/resource-governor>
or

QUESTION 4

You install a Microsoft SQL Server instance.

The instance will store data extracted from two databases running on Microsoft Azure SQL Database.

You hire a data steward to perform interactive data cleansing and ad hoc querying and updating of the data.

You need to ensure that the data steward is given the correct client tools to perform these tasks.

Which set of tools should you install?

- A. SQL Server DATA Tools and Distributed Replay Client
- B. Data Quality Client and SQL Server DATA Tools
- C. Master Data Services and SQL Server Data Tools
- D. Data Quality Client and Distributed Replay Client

Correct Answer: B

Explanation:

Data Quality Client is a standalone application that enables you to perform knowledge management, data quality projects, and administration in one user interface. The application is designed for both data stewards and DQS administrators. It is a stand-alone executable file that performs knowledge discovery, domain management, matching policy creation, data cleansing, matching, profiling, monitoring, and server administration.

SQL Server Data Tools is a modern development tool that you can download for free to build SQL Server relational databases, Azure SQL databases, Integration Services packages, Analysis Services data models, and Reporting Services reports. With SSDT, you can design and deploy any SQL Server content type with the same ease as you would develop an application in Visual Studio.

Incorrect Answers:

A, D: The SQL Server Distributed Replay feature helps you assess the impact of future SQL Server upgrades. You can also use it to help assess the impact of hardware and operating system upgrades, and SQL Server tuning.

C: Master Data Services enables you to manage a master set of your organization's data. You can organize the data into models, create rules for updating the data, and control who updates the data.

References:

[https://technet.microsoft.com/en-us/library/ff877917\(v=sql.110\).aspx](https://technet.microsoft.com/en-us/library/ff877917(v=sql.110).aspx)

<https://docs.microsoft.com/en-us/sql/ssdt/download-sql-server-data-tools-ssdt>

QUESTION 5

You administer a Microsoft SQL Server database named Contoso that contains a single user-defined database role named BillingUsers.

All objects in Contoso are in the dbo schema.

You need to grant EXECUTE permissions for all stored procedures in Contoso to BillingUsers.

Which Transact-SQL statement should you use?

- A. GRANT EXECUTE ON Schema::dbo TO BillingUsers
- B. EXEC sp_addrolemember 'db_procexecutor', 'BillingUsers'
- C. GRANT EXECUTE ON INFORMATION_SCHEMA.ROUTINES TO BillingUsers
- D. GRANT EXECUTE ON Schema::Contoso TO BillingUsers

Correct Answer: A

Explanation:

If you want to do it on schema level:

```
GRANT EXECUTE ON SCHEMA ::dbo TO
```

Incorrect:

Not B: DB_Executor is none of the predefined SQL Server database role Not C, Not D:

Incorrect schema.

References:

<http://www.sqlservercentral.com/articles/Permissions/107472/>

QUESTION 6

HOTSPOT

You administer a Microsoft SQL Server database.

The database is in the Simple recovery mode.

You schedule the following backup plan:

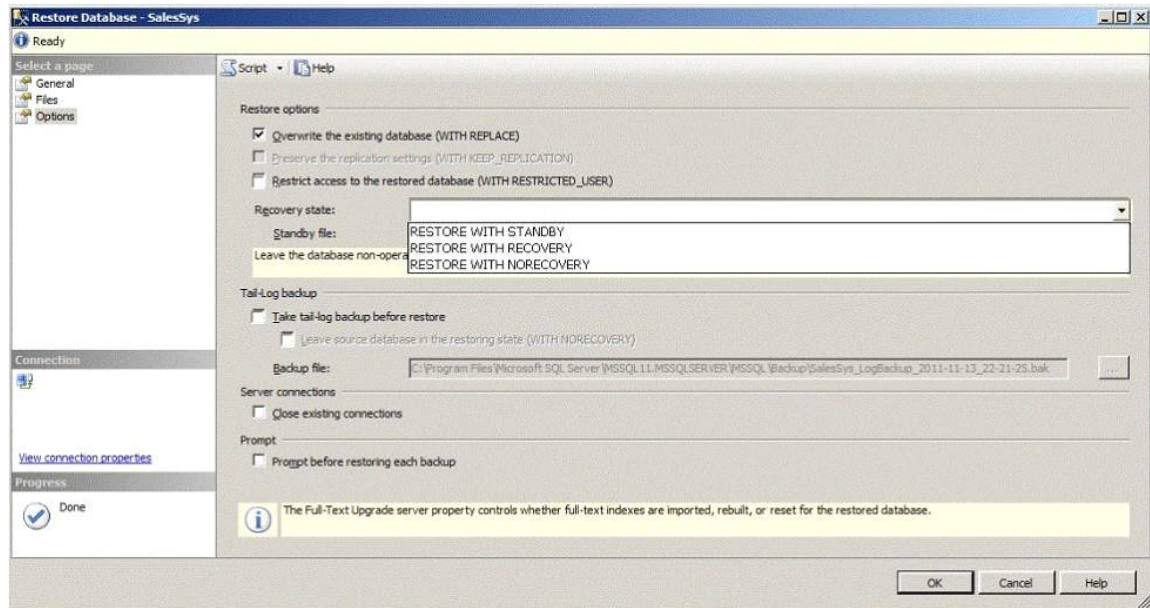
- Full backup every day at midnight
- Differential backups every hour on the hour, except at midnight
- Transaction log backups every ten minutes, starting 10 minutes from the hour, except on the hour

The database fails at 20:45 hours.

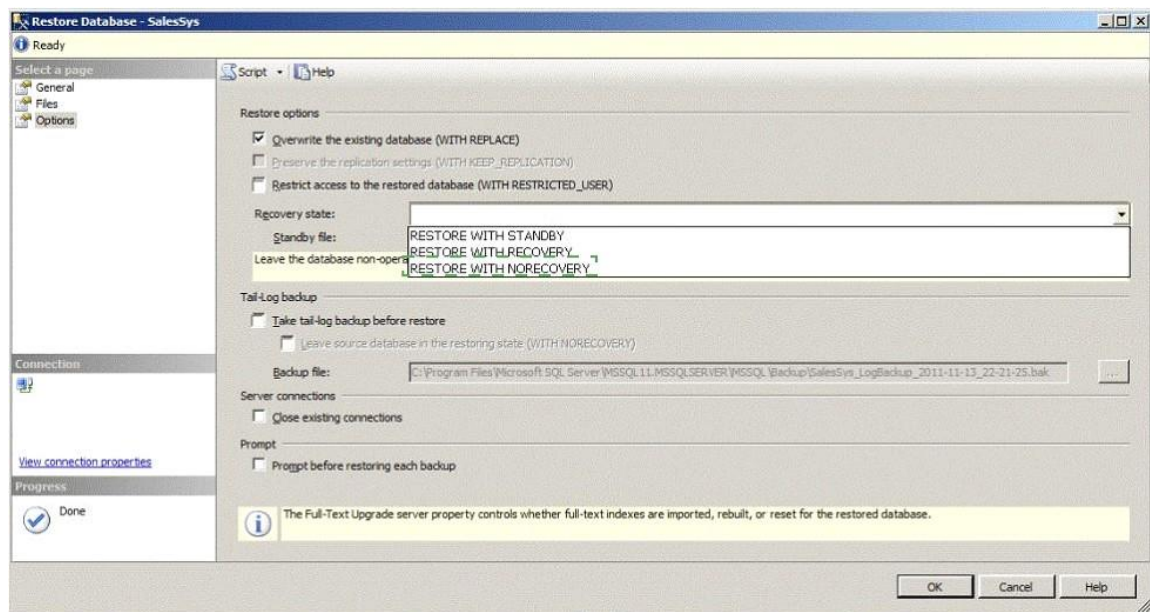
You need to use SQL Server Management Studio (SSMS) to begin restoring the database with a minimum amount of data loss.

Which options should you select on the Options page of the Restore Database window?

To answer, configure the appropriate option or options in the dialog box in the answer area.



Correct Answer:



QUESTION 7

DRAG DROP

You administer a Microsoft SQL Server database.

You want to import data from a text file to the database.

You need to ensure that the following requirements are met:

- Data import is performed from a Windows batch file.
- Data is loaded as a unit and is minimally logged.

Which data import command and recovery model should you choose?

To answer, drag the appropriate data import command or recovery model to the appropriate location or locations in the answer area. Answer choices may be used once, more than once, or not at all. Answer targets may be used once or not at all. Additionally, you may need to drag the split bar between panes or scroll to view content.

| Command/Recovery Model Name | Command/Recovery Model |
|-----------------------------|------------------------|
| BCP | Data import command |
| BULK INSERT | Recovery model |
| Bulk-logged | |
| OPENDATASOURCE | |
| Full | |

Correct Answer:

| Command/Recovery Model Name | Command/Recovery Model |
|-----------------------------|------------------------|
| BCP | Data import command |
| BULK INSERT | Recovery model |
| Bulk-logged | |
| OPENDATASOURCE | |
| Full | |

QUESTION 8

You administer a database that has User A, B and C.

User A must be able to create new tables and stored procedures, User B must be able to select, update, delete and insert data.

User C must be able to provide windows logins to the database

To which role or roles should you add to UserA? Select all that apply.

- A. db_accessadmin
- B. db_ddladmin
- C. db_datawriter
- D. db_datareader
- E. db_owner

Correct Answer: B

Explanation:

User A = db_ddladmin
User B = db_datawriter, db_datareader
User C = db_accessadmin

QUESTION 9

HOTSPOT

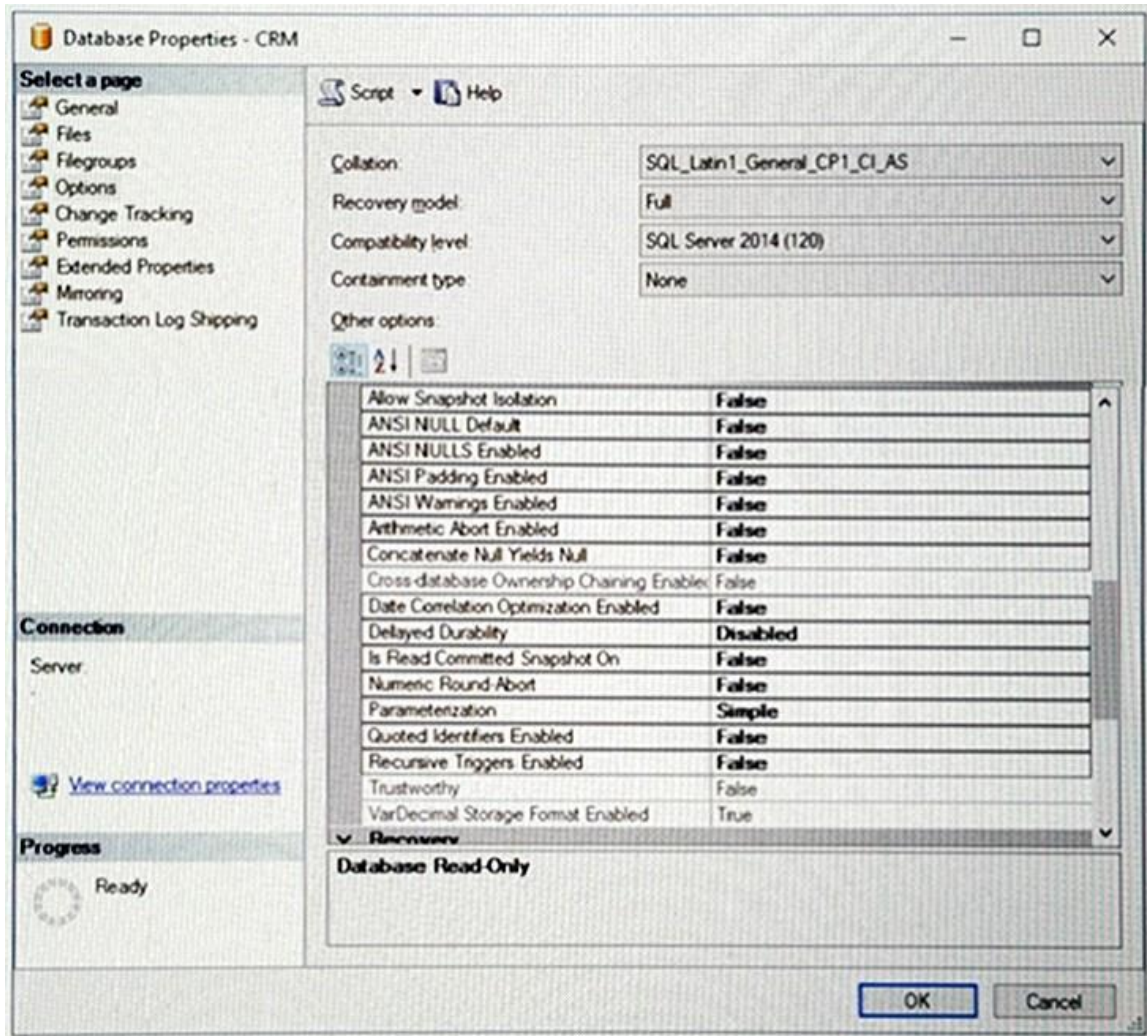
You have a server named SQL1 that hosts a reporting database named REPORTING. REPORTING contains data that is also stored in a production database.

You discover many blocking locks in REPORTING. The blocked queries are SELECT statements. The queries that hold the blocking locks are INSERT statements that wait on the WRITELOG wait type.

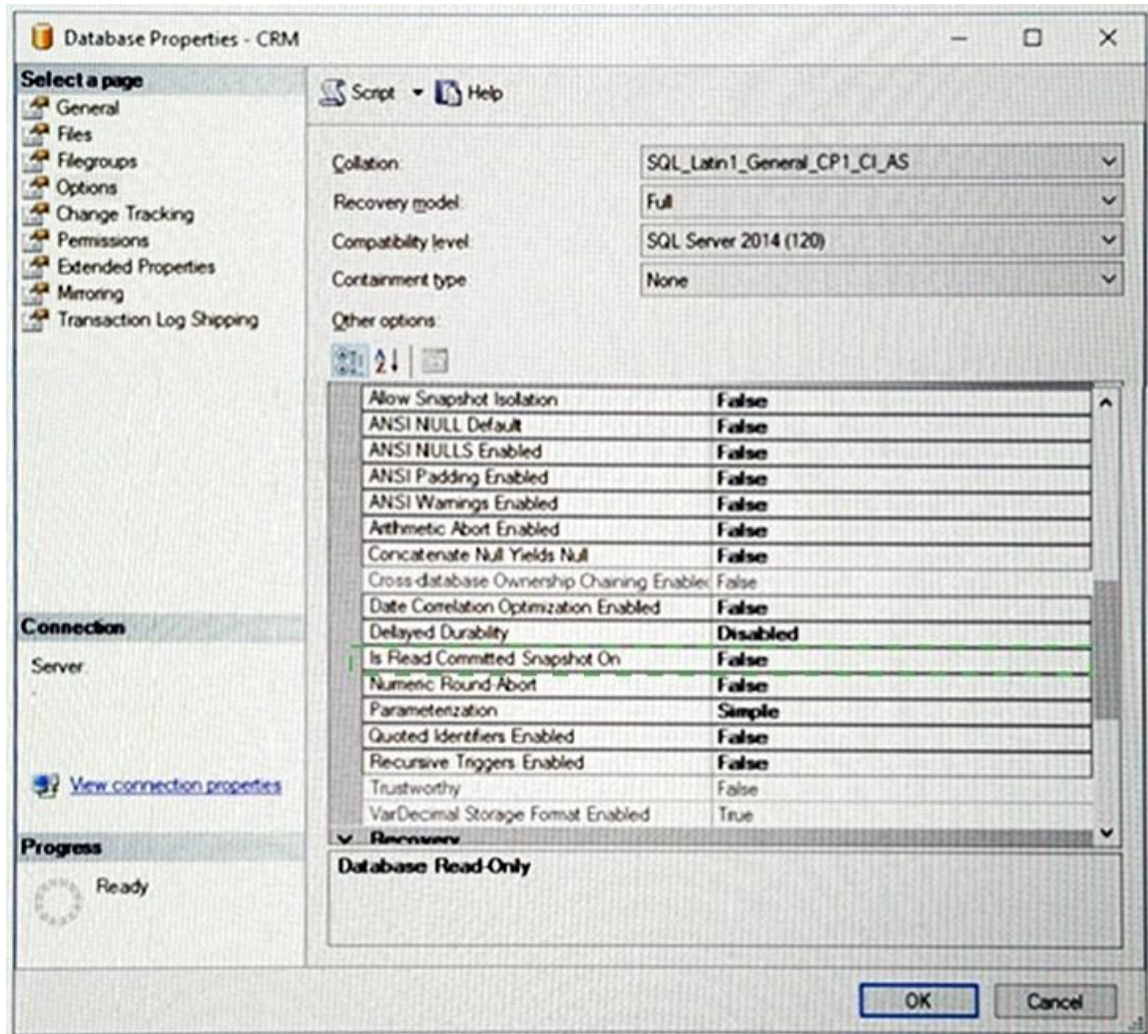
You need to prevent the INSERT statements from creating the blocking locks. The solution must also minimize the amount of time the INSERT statements wait on the WRITELOG wait type.

Which two database settings should you modify?

To answer, select the appropriate settings in the answer area.



Correct Answer:



QUESTION 10

You are the senior database administrator for a Microsoft SQL Server environment that uses Windows Azure SQL Database.

You need to grant a junior database administrator only the permissions required to create new logins.

Which Windows Azure SQL Database role should you assign the junior database administrator?

- A. securityadmin
- B. loginmanager
- C. serveradmin
- D. setupadmin

Correct Answer: B

QUESTION 11

You have a server named SQL1 that has SQL Server installed. SQL1 hosts several applications. You plan to deploy a third-party application to SQL1. The application must have the following:

- A vendor-provided password for the sa account
- A vendor-provided user account that is a member of the sysadmin fixed server role
- A vendor-provided user account that is a member of the db.owner fixed database role in the msdb database
- A vendor-provided user account that is a member of the db.owner fixed database role in the master database
- A vendor-provided user account that is a member of the SQLAgentOperatorRole fixed database role in the msdb Database

You need to identify the minimum number of SQL Server instances that you must add to SQL1 to support the application requirements. The solution must use the principle of least privilege.

How many SQL Server instances should you add to SQL1?

- A. 0
- B. 1
- C. 2
- D. 3

Correct Answer: D

QUESTION 12

DRAG DROP

You administer a Microsoft SQL Server database.

Every Sunday afternoon, a process inserts a large volume of data. Users generate reports and modify additional data throughout the week.

You need to create a backup strategy that:

- minimizes the size of the transaction log,
- minimizes the size of the backups, and
- ensures a 24-hour recovery point objective (RPO).

Which strategy or strategies should you use?

To answer, drag the appropriate strategy or strategies to their corresponding task or tasks in the answer area. Answer choices may be used once, more than once, or not at all. Answer targets may be used once or not at all. Additionally, you may need to drag the split bar

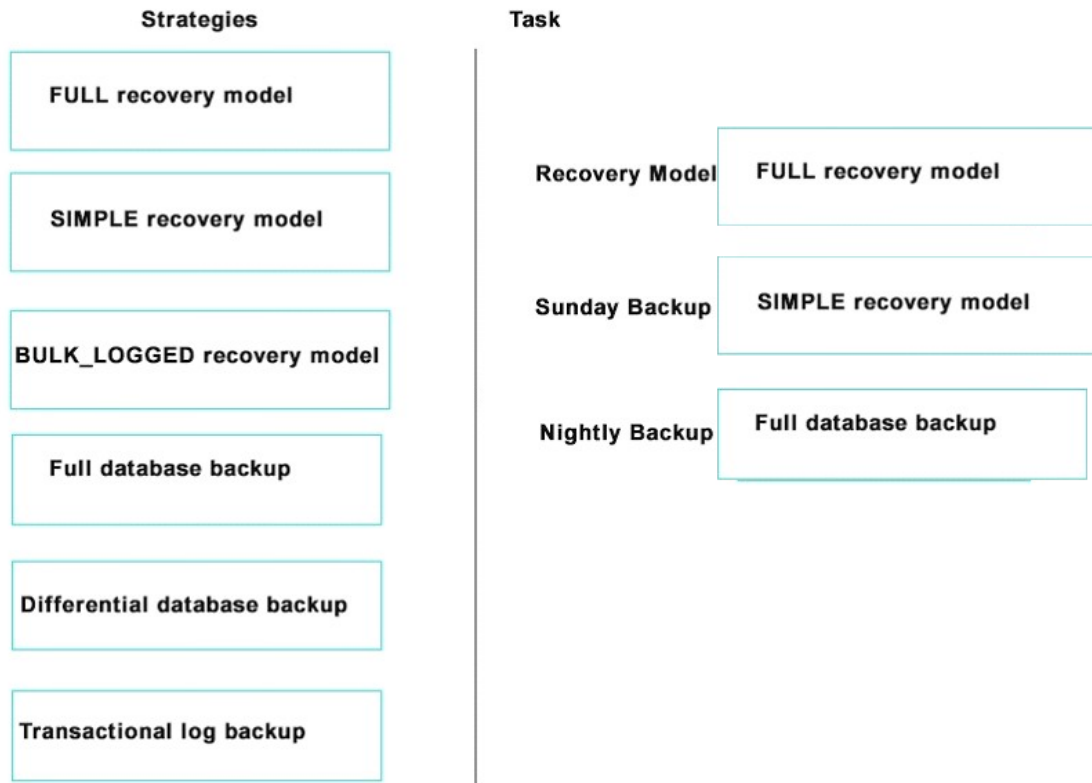
between panes or scroll to view content.

Answer Area

| Strategies | Task |
|------------------------------|--|
| FULL recovery model | Recovery Model Strategy |
| SIMPLE recovery model | |
| BULK_LOGGED recovery model | Sunday Backup Strategy |
| Full database backup | |
| Differential database backup | |
| Transactional log backup | Nightly Backup Strategy |

Correct Answer:

Answer Area



QUESTION 13

You administer a Microsoft Azure SQL Database database named Orders.

Users report that a query that filters on OrderDate is taking an exceptionally long time. You discover that an index named IX_OrderDate on the CustomerOrder table is disabled.

You need to ensure that the query can use the IX_OrderDate index.

Which Transact-SQL command should you use?

- A. ALTER INDEX IX_OrderDate ON CustomerOrder DISABLE
- B. ALTER INDEX IX_OrderDate ON CustomerOrder ENABLE
- C. ALTER INDEX IX_OrderDate ON CustomerOrder REORGANIZE
- D. ALTER INDEX IX_OrderDate ON CustomerOrder REBUILD

Correct Answer: B

Explanation:

Enable a disabled index by using the Transact-SQL ALTER INDEX REBUILD command.

QUESTION 14

You administer a Microsoft SQL Server environment. You purchase a new server and plan to migrate your database from an existing server to the new server.

You want to evaluate the new server's performance based on the workloads of the existing server.

To do so, you need to run the workloads captured from the existing server against the new server from multiple computers.

Which SQL Server tool should you use?

- A. Distributed Replay
- B. Data Tools
- C. Migration Assistant
- D. Upgrade Advisor

Correct Answer: A

Explanation:

With Distributed Replay, you can replay a workload from multiple computers and better simulate a mission-critical workload.

References:

[https://technet.microsoft.com/en-us/library/ff878183\(v=sql.110\).aspx](https://technet.microsoft.com/en-us/library/ff878183(v=sql.110).aspx)

QUESTION 15

DRAG DROP

You develop an application that uses data from a Microsoft SQL Server database.

A stored procedure named MyProcedure experiences excessive blocking problems.

You need to enable row versioning. However, you do not want to force every connection to have row versioning enabled.

Which code segment or segments should you use to complete the Transact-SQL statements?

To answer, drag the appropriate command or commands to the appropriate position or positions in the answer area to complete the Transact-SQL statements. Answer choices may be used once, more than once, or not at all. Answer targets may be used once. Additionally, you may need to drag the split bar between panes or scroll to view content.

Commands

SET ALLOW_SNAPSHOT_ISOLATION ON

SET CHANGE_TRACKING = ON

SET READ_COMMITTED_SNAPSHOT ON

SET ROW_VERSIONING ON

SET TRANSACTION ISOLATION LEVEL READ COMMITTED

SET TRANSACTION ISOLATION LEVEL REPEATABLE READ

SET TRANSACTION ISOLATION LEVEL SNAPSHOT

Transact-SQL Statements

ALTER DATABASE MyDatabase

COMMAND

CREATE PROCEDURE
AS

SET NOCOUNT ON

COMMAND

Correct Answer:

Commands

SET ALLOW_SNAPSHOT_ISOLATION ON

SET CHANGE_TRACKING = ON

SET READ_COMMITTED_SNAPSHOT ON

SET ROW_VERSIONING ON

SET TRANSACTION ISOLATION LEVEL READ COMMITTED

SET TRANSACTION ISOLATION LEVEL REPEATABLE READ

SET TRANSACTION ISOLATION LEVEL SNAPSHOT

Transact-SQL Statements

ALTER DATABASE MyDatabase

SET ALLOW_SNAPSHOT_ISOLATION ON

CREATE PROCEDURE
AS

SET NOCOUNT ON

SET TRANSACTION ISOLATION LEVEL SNAPSHOT

QUESTION 16

You administer a Microsoft SQL Server environment. One of the SQL Server instances contains a database named Contoso.

You plan to migrate Contoso to Microsoft Azure SQL Database.

To do so, you need to implement a contained database.

Which two actions should you perform? Each correct answer presents part of the solution.

- A. Set database containment to CONTAINED.
- B. Enable database property contained database authentication.

- C. Set database containment to PARTIAL.
- D. Set database containment to CLOUD.
- E. Enable server property contained database authentication.
- F. Enable database property encryption enabled.

Correct Answer: BC

Explanation:

Contained database authentication is defined on the database, not on the server.

A database is converted to a contained database by changing the CONTAINMENT option to partial.

References:

<https://docs.microsoft.com/en-us/sql/relational-databases/databases/migrate-to-a-partially-contained-database>

QUESTION 17

DRAG DROP

You administer two Microsoft SQL Server database servers named ProdSrv1 and ProdSrv2. Each server has a database named Orders.

You need to configure transactional replication from the OrderSummary table in the Orders database on ProdSrv1 to the OrderSummary table in the Orders database on ProdSrv2.

Which four actions should you perform in sequence?

To answer, move the appropriate actions from the list of actions to the answer area and arrange them in the correct order.

Actions

- Configure ProdSrv2 as a Publisher.
- Configure ProdSrv1 as a Distributor.
- Configure a publication of the Order-Summary table on ProdSrv1.
- Configure a publication of the Order-Summary table on ProdSrv2.
- Create a subscription of the publication in the Orders database on ProdSrv1.
- Create a subscription of the publication in the Orders database on ProdSrv2.
- Configure ProdSrv1 as a Publisher.

Answer Area



Correct Answer:

Actions

- Configure ProdSrv2 as a Publisher.
- Configure ProdSrv1 as a Distributor.
- Configure a publication of the Order-Summary table on ProdSrv1.
- Configure a publication of the Order-Summary table on ProdSrv2.
- Create a subscription of the publication in the Orders database on ProdSrv1.
- Create a subscription of the publication in the Orders database on ProdSrv2.
- Configure ProdSrv1 as a Publisher.

Answer Area

- Configure ProdSrv1 as a Distributor.
- Configure ProdSrv1 as a Publisher.
- Configure a publication of the Order-Summary table on ProdSrv1.
- Create a subscription of the publication in the Orders database on ProdSrv1.



QUESTION 18

You administer a Microsoft SQL Server database.

You need to ensure that the size of the transaction log file does not exceed 2 GB.

What should you do?

- A. Execute `sp_configure 'max log size', 2G.`

- B. Use the ALTER DATABASE...MODIFY FILE command along with the name and maxsize parameters.
- C. Use the ALTER DATABASE...MODIFY FILEGROUP command along with the name and maxsize parameters.
- D. Use the ALTER DATABASE...AUTO_SHRINK command along with the On parameter.

Correct Answer: B

Explanation:

MODIFY FILE specifies the file that should be modified. The file could be a log file. MAXSIZE { max_size| UNLIMITED } specifies the maximum file size to which the file can grow.

References:

[https://technet.microsoft.com/en-us/library/bb522469\(v=sql.105\).aspx](https://technet.microsoft.com/en-us/library/bb522469(v=sql.105).aspx)

QUESTION 19

You are planning to install a Microsoft SQL Server database server that will be used by a web application.

You need to minimize the attack surface area.

Which two actions should you perform? Each correct answer presents part of the solution.

- A. Use a single user account to start all database services.
- B. Install only the database engine and disable other features.
- C. Install the database server on a server core installation of Windows Server 2008 R2.
- D. Set the database service to start automatically.
- E. Install the database server as a named instance.

Correct Answer: BC

Explanation:

To reduce the attack surface area and to make sure you are not affected by undiscovered service vulnerabilities, disable any service that is not required

Because Server Core has fewer system services running on it than a Full installation does, there's less attack surface (that is, fewer possible vectors for malicious attacks on the server). This means that a Server Core installation is more secure than a similarly configured Full installation.

References:

<https://msdn.microsoft.com/en-us/library/dd184076.aspx>

https://msdn.microsoft.com/en-us/library/ff648664.aspx#c18618429_010

QUESTION 20

DRAG DROP

You administer a Microsoft SQL Server database.

You use an OrderDetail table that has the following definition:

```
CREATE TABLE [dbo].[OrderDetail]
  ([SalesOrderID] [int] NOT NULL,
   [SalesOrderDetailID] [int] IDENTITY(1,1) NOT NULL,
   [CarrierTrackingNumber] [nvarchar](25) NULL,
   [OrderQty] [smallint] NOT NULL,
   [ProductID] [int] NOT NULL,
   [SpecialOfferID] [int] NULL,
   [UnitPrice] [money] NOT NULL);
```

You need to create a non-clustered index on the SalesOrderID column in the OrderDetail table to include only rows that contain a value in the CarrierTrackingNumber column.

Which four Transact-SQL statements should you use?

To answer, move the appropriate statements from the list of statements to the answer area and arrange them in the correct order.

| | |
|--|--|
| WHERE | |
| FILTER ON | |
| CarrierTrackingNumber IS NOT NULL; | |
| ON dbo.OrderDetail (SalesOrderID) | |
| ON dbo.OrderDetail (SalesOrderID) AS FILTERED_INDEX | |
| CREATE NONCLUSTERED INDEX FIndx_CarrierTrackingNumber | |
| CREATE NONCLUSTERED FILTERED INDEX FIndx_CarrierTrackingNumber | |

Correct Answer:

| | |
|--|--|
| WHERE | CREATE NONCLUSTERED FILTERED INDEX FIdx_CarrierTrackingNumber |
| FILTER ON | ON dbo.OrderDetail (SalesOrderID) |
| CarrierTrackingNumber IS NOT NULL; | WHERE |
| ON dbo.OrderDetail (SalesOrderID) | CarrierTrackingNumber IS NOT NULL; |
| ON dbo.OrderDetail (SalesOrderID) AS FILTERED_INDEX | |
| CREATE NONCLUSTERED INDEX FIdx_CarrierTrackingNumber | |
| CREATE NONCLUSTERED FILTERED INDEX FIdx_CarrierTrackingNumber | |