



Microsoft

Exam 70-982

Recertification for MCSE: Desktop Infrastructure

Version: 5.0

[Total Questions: 180]

Topic break down

Topic	No. of Questions
Topic 1: Proseware Inc	10
Topic 2: Contoso, Ltd	11
Topic 3: Litware, Inc	11
Topic 4: A.Datum Corporation	12
Topic 5: Mixed Questions (A)	74
Topic 6: Mixed Questions (B)	62

Topic 1, Proseware Inc

Overview

Proseware, Inc. is an independent software vendor. The company has a main office and two branch offices. The main office is located in New York. The branch offices are located in London and Moscow.

Existing Environment

The New York office and the London office each contain the following servers that run Windows Server 2008 R2:

- ✍ One Windows Deployment Services (WDS) server
- ✍ One Remote Desktop Session Host (RD Session Host) server

Each office contains client computers that run Windows XP.

The London office and the New York office connect to each other by using a high-speed WAN link. The Moscow office and the New York office connect to each other by using a low-speed# high-latency WAN link.

The network connection between the Moscow office and the New York office frequently fails.

Requirements

Planned Changes

The company plans to implement the following changes:

- ✍ Migrate all of the client computers to Windows 8.
- ✍ Deploy new applications named App1, App2, and App3.
- ✍ Deploy a Virtual Desktop Infrastructure (VDI) in the New York office.
- ✍ Deploy a Windows Server Update Services (WSUS) infrastructure.

Migration Requirements

The company identifies the following migration requirements:

- ✍ Migrate the client computers to Windows 8 by using the Microsoft Deployment Toolkit (MDT).
- ✍ Replace the client computers in the New York office. Migrate the user settings during the migration to the new hardware.
- ✍ Ensure that the client computers in the London office that are not PXE-capable can download images from WDS.
- ✍ Reformat the existing disks in the London office during the migration to Windows 8.
- ✍ Avoid using the WAN link between the Moscow and New York offices whenever possible.
- ✍ Avoid deploying any servers to the Moscow office.

Virtual Desktop Infrastructure (VDI) Requirements

The company identifies the following VDI requirements:

- ✍ Automatically provision new virtual desktops based on a virtual desktop template. The new virtual desktops will run Windows 8.

- ✍ Automatically discard any user changes to the new virtual desktops when the users log off.
- ✍ Deploy a 3D graphics application named App1 to all of the new virtual desktops. App1 will require DirectX 11 support.
- ✍ Ensure that updates for App1 are applied to all of the new virtual desktops.

Application Requirements

The company identifies the following application requirements:

- ✍ In the New York office, deploy an application named App2 to the client computers that run Windows 8.
- ✍ Minimize the amount of resources used by App2 on the client computers.
- ✍ In the London office, publish an application named App3 to the Work Resources (RADC) area of the Windows 8 Apps screen.

Security Requirements

The company identifies the following security requirements:

- ✍ Ensure that updates for the New York, London, and Moscow offices can be approved only by the administrators in the New York office.
- ✍ Ensure that the users in the New York office can use only classes of USB devices that are approved by the IT department.
- ✍ Configure the replication of updates between the update servers in the New York and London offices.

Question No : 1 - (Topic 1)

You are planning the deployment of Remote Desktop Services (RDS) to support App3. The RDS servers will run Windows Server 2012.

You need to recommend which RDS role services are required to ensure that App3 meets the application requirements.

Which RDS role services should you recommend? (Each correct answer presents part of the solution. Choose all that apply.)

- A. Remote Desktop Connection Broker
- B. Remote Desktop Gateway
- C. Remote Desktop Virtualization Host
- D. Remote Desktop Web Access
- E. Remote Desktop Session Host

Answer: B,C,D

Explanation:

App3 is a published program.

Dumps with VCE and PDF (+Free VCE Software)

Select deployment scenario DESTINATION SERVER
Standard deployment selected

Before You Begin
Installation Type
Deployment Type
Deployment Scenario
Role Services
RD Connection Broker
RD Web Access
RD Session Host
Confirmation
Completion

Remote Desktop Services can be configured to allow users to connect to virtual desktops, RemoteApp programs, and session-based desktops.

Virtual machine-based desktop deployment

Virtual machine-based desktop deployment allows users to connect to virtual desktop collections that include published RemoteApp programs and virtual desktops.

Session-based desktop deployment




Session-based desktop deployment allows users to connect to session collections that include published RemoteApp programs and session-based desktops.


C:\Documents and Settings\usernwz1\Desktop\1.PNG

Review role services DESTINATION SERVER
Standard deployment selected

Before You Begin
Installation Type
Deployment Type
Deployment Scenario
Role Services
RD Connection Broker
RD Web Access
RD Session Host
Confirmation
Completion

The following Remote Desktop Services role services will be installed and configured for this deployment.

-  Remote Desktop Connection Broker
Remote Desktop Connection Broker connects or reconnects a client device to RemoteApp programs, session-based desktops, and virtual desktops.
-  Remote Desktop Web Access
Remote Desktop Web Access enables users to connect to resources provided by session collections and virtual desktop collections by using the Start menu or a web browser.
-  Remote Desktop Session Host
Remote Desktop Session Host enables a server to host RemoteApp programs or session-based desktops.

 The credentials of the [redacted] account will be used to create the deployment.

C:\Documents and Settings\usernwz1\Desktop\1.PNG

Question No : 2 - (Topic 1)

You need to recommend a task sequence to migrate the client computers in the New York

office to Windows B. The solution must meet the migration requirements.

Which command should you include in the recommendation?

- A. Migpol
- B. Winrm
- C. Wbadmin
- D. Scanstate

Answer: D

Explanation:

Replace the client computers in the New York office. Migrate the user settings during the migration to the new hardware

Question No : 3 - (Topic 1)

You need to recommend an application deployment method for App2 that meets the application requirements.

Which method should you recommend?

- A. Group Policy software installation
- B. A RemoteApp program
- C. A Microsoft Application Virtualization (App-V) package
- D. A Client Hyper-V virtual machine

Answer: B

Explanation:

App-V maintains local resources on the client whereas RemoteApp utilizes resources on the backend RDS Server.

The network data sent to the client is also different, App-V has two feature packs that contain all binaries of the streamed app. Remote Apps utilizes RDP, so only the picture information, mouse, keyboard etc are transmitted.

Actually they can be combined, applications can be streamed to a RDS server and published to the client via RemoteApp. For more information, please see <http://blogs.msdn.com/b/rds/archive/2009/10/14/whitepaperrelease-application->

virtualization-4-5-for-terminal-services.aspx

For more information about App-V, I suggest that you post to the App-V forum:

<http://social.technet.microsoft.com/Forums/en-US/category/appvirtualization>

Hope the information is helpful for your work.

Question No : 4 - (Topic 1)

You need to configure a Group Policy object (GPO) that meets the security requirements of the users in the New York office.

Which Group Policy settings should you configure?

- A. Allow installation of devices that match any of these device setup classes Prevent installation of devices not described by other policy settings
- B. All Removable Storage classes: Deny all access Prevent installation of devices not described by other policy settings
- C. Allow installation of devices that match any of these device setup classes Prevent installation of devices using drivers that match these device setup classes
- D. All Removable Storage classes: Deny all access Prevent installation of devices using drivers that match these device setup classes

Answer: A

Explanation:

You'd first allow installation of specific classes and then prevent all others.

Prevent installation of devices not described by other policy settings.

This policy setting controls the installation of devices that are not specifically described by any other policy setting. If you enable this policy setting, users cannot install or update the driver for devices unless they are described by either the Allow installation of devices that match these device IDs policy setting or the Allow installation of devices for these device classes policy setting. If you disable or do not configure this policy setting, users can install and update the driver for any device that is not described by the Prevent installation of devices that match these device IDs policy setting, the Prevent installation of devices for these device classes policy setting, or the Prevent installation of removable devices policy setting.

<http://msdn.microsoft.com/en-us/library/bb530324.aspx>

Question No : 5 - (Topic 1)

You need to recommend a virtual desktop solution that meets the VDI requirements.

What should you recommend?

- A. Managed personal virtual desktop collections
- B. Unmanaged personal virtual desktop collections
- C. Managed pooled virtual desktop collections
- D. Unmanaged pooled virtual desktop collections

Answer: C

Explanation:

Virtual Desktop Collection

There are two types of virtual desktop collections available: personal and pooled. You have the option to let Remote Desktop Services automatically manage pooled virtual desktops in a collection, or you can manually manage them. We will concentrate on automatically managed pooled virtual desktop collections.

A managed pooled virtual desktop collection offers the following capabilities:

Automatically create pooled virtual desktops based on a virtual desktop template.

Automatically install security updates and applications based on a virtual desktop template.

Live migration with local caching.

User profile disk support. A user profile disk stores user profile information in a separate virtual hard disk so that user profile settings are persistent across pooled virtual desktops.

With either managed or unmanaged, the administrator can configure the pool to store the user profiles on User Profile disks separate from the machines.

<http://blogs.technet.com/b/canitpro/archive/2013/04/25/step-by-step-deploying-virtual-desktops-with-windowsserver-2012.aspx>

Virtual Machine-based desktop Deployment is of two types:

Personal Virtual Desktop Collection – Administrators manually assign virtual desktops to the users.

Pooled Virtual Desktop Collection - Administrators deploy virtual desktops and users are randomly assigned virtual desktops. At log off virtual desktops are generally rolled back (rollback is optional).

Creating a Pooled Virtual Desktop Collection

There are two types of Pooled Virtual desktop Collections:

Pooled Managed The Virtual desktop machine is created using the Sysprep Template of a

virtual machine.

We can recreate the virtual desktops from this image at will.

Pooled Unmanaged We can add the existing virtual machine to this virtual desktop collection from Hyper V pool.

With either option, the administrator can configure the pool to store the user profiles on User Profile disks separate from the machines.

<http://blogs.technet.com/b/askperf/archive/2012/10/31/windows-8-windows-server-2012-pooled-virtualdesktop-infrastructure.aspx>

Note

If a user disconnects from a virtual machine in a virtual desktop pool, when the user reconnects to the virtual desktop pool, the user will be connected to the same virtual machine. A virtual machine in a virtual desktop pool can be configured to be automatically restored to its original state after the user logs off. Any changes that a user made while logged on are not saved. For more information, see <http://go.microsoft.com/fwlink/?LinkId=143453>.

C:\Documents and Settings\usernwz1\Desktop\1.PNG

<http://technet.microsoft.com/en-us/library/ee216741.aspx>

Question No : 6 - (Topic 1)

You need to prepare a virtual machine template that meets the VDI requirements.

What should you do?

- A. Run `dism.exe` and specify the `/image` parameter.
- B. Run `dism.exe` and specify the `/export-image` parameter.
- C. Run `sysprep.exe` and specify the `/audit` parameter.
- D. Run `sysprep.exe` and specify the `/generalize` parameter.

Answer: D

Explanation:

1. Virtual Hard Disk
 - a. The Master VM can only have one virtual hard disk (VHD) attached to it; more than one VHD attached to the Master VM is not supported.
 - b. The VHD attached to the Master VM must have either a Windows 7 SP1 or Windows 8 image in `sysprep` generalized state.
 - c. A diff disk chain attached to the Master VM as its VHD is supported.
 - d. Although the VHD can have more than one logical partition defined in it, it can have only one Windows OS image installed in it.

C:\Documents and Settings\usernwz1\Desktop\1.PNG

Question No : 7 - (Topic 1)

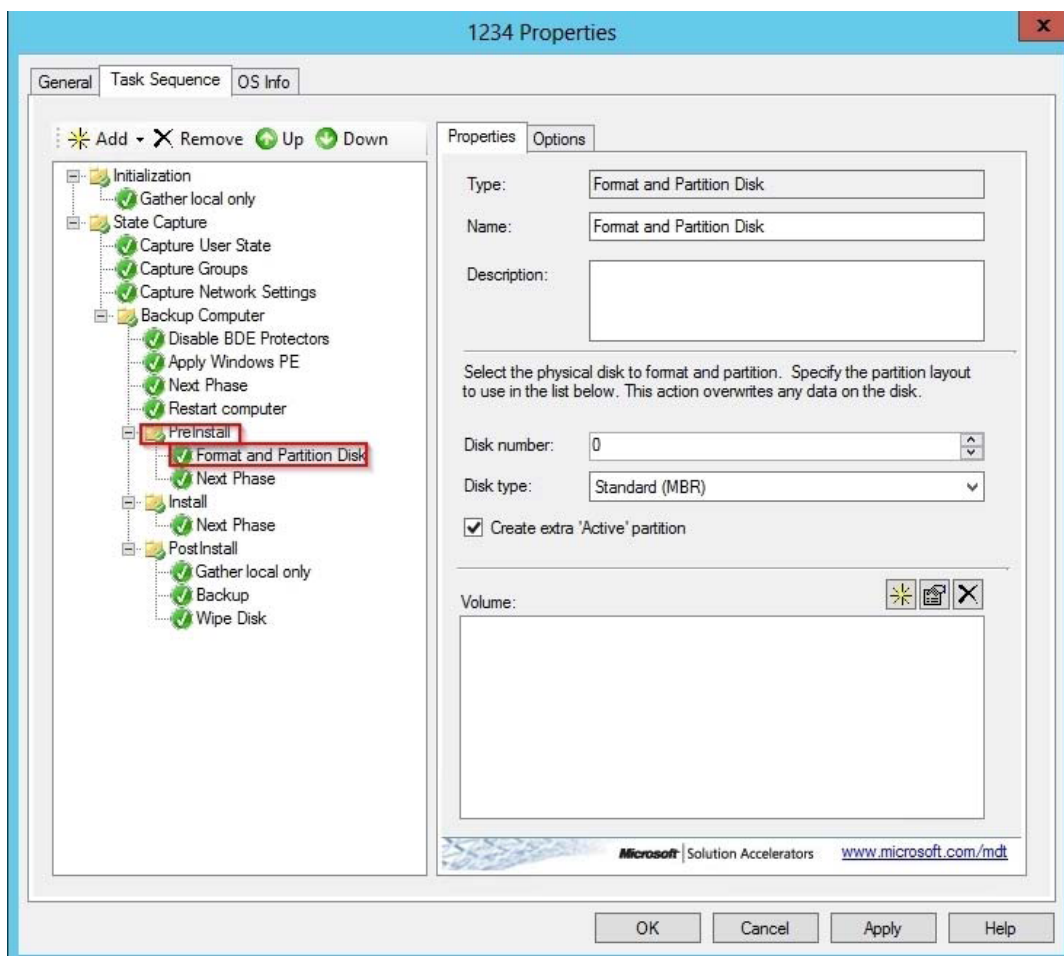
You need to configure a Deployment Workbench task sequence that meets the migration requirements of the London office.

Which task group should you edit?

- A. Preinstall
- B. State Restore
- C. Postinstall
- D. Capture the reference machine

Answer: A

Explanation:



C:\Documents and Settings\usernwz1\Desktop\1.PNG

Question No : 8 - (Topic 1)

You need to deploy Windows 8 to the client computers in the Moscow office. The solution must meet the migration requirements.

What should you do first?

- A. From the Windows Deployment Services console, add a boot image.
- B. From the Windows Deployment Services console, add an install image.
- C. From the Deployment Workbench, select New Media.
- D. From the Deployment Workbench, select New Linked Deployment Share

Answer: C

Explanation:

The assumption is we only want to use the WAN link when absolutely required. If we create a Linked

Deployment Share, all selected data would be replicated to Moscow from New York.

By managing the Task Sequence/Share locally in Moscow with no link to New York, you're only downloading the media and software one time.

Solution: Use MDT to create a bootable image for a DVD or external drive.

Step 1: Create selection profiles.

Step 2: Create your media.

Step 3: Update your media.

Step 4: Prepare your media.

Step 5: Use your media on the client machine.

Optional: Customize or automate your media.

Question No : 9 - (Topic 1)

You need to recommend a solution for updating App1. The solution must meet the VDI requirements.

What should you recommend?

- A. Create a new virtual machine from the template file, apply the patch, and create a snapshot of the virtual machine.
- B. Create a new virtual machine from the template file, apply the patch, and run sysprep.exe.
- C. Mount the virtual machine template on a physical host and configure the template to be bootable. Apply the patch and run sysprep.exe.
- D. Mount the virtual machine template on a physical host and configure the template to be bootable. Apply the patch and run dism.exe.

Answer: B

Explanation:

Ensure that updates for App1 are applied to all of the new virtual desktops.

Rolling Out Updates to a Pooled Virtual Desktop Collection

A Master or Gold VM is formally referred to as “virtual desktop template” in the WS2012 Server Manager UI console and the cmdlets in Remote Desktop Services module for Windows PowerShell. It is an input to the managed virtual desktop collection creation process that allows an admin to manage a virtual desktop collection. The Master VM is created and managed by the admin and it specifies the hardware properties and software contents of all the automatically created VMs in that managed virtual desktop collection. For example, if the master VM is assigned 2GB of RAM, then each of the automatically created VMs in the managed virtual desktop collection will be assigned 2GB RAM. In this section, I will describe the various supported options and requirements for the Master VM.

Virtual Hard Disk

The Master VM can only have one virtual hard disk (VHD) attached to it; more than one VHD attached to the Master VM is not supported.

The VHD attached to the Master VM must have either a Windows 7 SP1 or Windows 8 image in sysprep generalized state.

A diff disk chain attached to the Master VM as its VHD is supported.

Although the VHD can have more than one logical partition defined in it, it can have only one Windows OS image installed in it.

<http://blogs.msdn.com/b/rds/archive/2012/10/29/single-image-management-for-virtual-desktop-collections-inwindows-server-2012.aspx>

Question No : 10 - (Topic 1)

A hardware supplier provides you with four server builds. The server builds are configured

as shown in the following table.

Build name	Processor type	Processor feature
Build1	Intel Core i7	Intel Turbo Boost Technology
Build2	Intel Xeon	Intel Flex Memory Access
Build3	Intel Xeon	Second Level Address Translation (SLAT)
Build4	Intel Core i7	Intel Flex Memory Access

You need to recommend which server build must be used to meet the VDI requirements.

What should you include in the recommendation?

- A. Build1
- B. Build2
- C. Build3
- D. Build4

Answer: C

Topic 2, Contoso, Ltd

Overview

Contoso, Ltd., is a pharmaceutical company. The company has an office in Seattle.

Existing Environment

The network contains a single-domain Active Directory forest named contoso.com.

The relevant servers in the network are configured as shown in the following table.

Server name	IP address	Role
SRV-DHCP	10.0.0.10/24	DHCP server
SRV-WSUS	10.0.0.20/24	Windows Server Update Services (WSUS) server

All client computers run Windows XP. All client computers are configured to receive automatic updates from SRV-WSUS.

All users have desktop computers. Users in the sales department also have laptop computers. The laptop computers are used by the sales users to remotely access the

internal network by using a VPN connection.

The sales users use several line-of-business applications.

Requirements

Planned Changes

The company plans to deploy a Microsoft System Center 2012 Configuration Manager infrastructure that will contain two servers. The servers will be configured as shown in the following table.

Server name	IP address	Role
SRV-PRI	10.0.0.40/24	Primary site server
SRV-DP	10.0.0.50/24	Distribution point

The company plans to deploy a Remote Desktop Services (RDS) infrastructure that will contain the following servers:

- ✍ Two Remote Desktop Connection Broker (RD Connection Broker) servers configured for high-availability
- ✍ Two Remote Desktop Visualization Host (RD Virtualization Host) servers
- ✍ Two Remote Desktop Web Access (RD Web Access) servers
- ✍ Two Remote Desktop Gateway (RD Gateway) servers

Technical Requirements

The company identifies the following technical requirements:

- ✍ Configuration Manager must be used to deploy operating systems and patches.
- ✍ An existing virtual machine that runs Windows 8 must be used as the reference computer for the deployment of new client computers.
- ✍ To troubleshoot installation issues, technicians must be able to open a Command Prompt window during the deployment of Windows 8 to the new client computers.

Sales Department Requirements

The company identifies the following requirements for the sales users:

- ✍ All of the files on the laptop computers must be encrypted.
- ✍ The amount of administrative effort must be minimized whenever possible.
- ✍ Certificate warnings must not be displayed when connecting to virtual desktops.
- ✍ The availability of the virtual desktops must not be affected by a single server failure.
- ✍ The desktop computers of the sales users must be replaced by virtual desktops that run Windows 8.
- ✍ The contents of each sales user's Documents folder must be the same on the virtual desktop and the laptop computer.
- ✍ The sales users must be able to connect to their virtual desktop from their laptop computer without using a VPN connection.
- ✍ The sales users must be able to configure their user settings independently on

their virtual desktop and their laptop computer.

- ✍ The line-of-business applications must be installed on the virtual desktops only. The line-of-business applications require hardware acceleration to run.

Question No : 11 - (Topic 2)

You need to ensure that the line-of-business applications run successfully for the sales users. The solution must meet the sales department requirements.

What should you do?

- A. On the RD Virtualization Host servers, install the Quality Windows Audio Video Experience feature.
- B. On the RD Connection Broker servers, modify the deployment properties.
- C. On the RD Virtualization Host servers, modify the Hyper-V settings.
- D. On the RD Connection Broker servers, modify the properties of the virtual desktop collection.

Answer: C

Explanation:

The line-of-business applications must be installed on the virtual desktops only. The line-of-business applications require hardware acceleration to run.

1. Open Hyper-V Manager. Click Start, point to Administrative Tools, and then click Hyper-V Manager.
2. In the Results pane, under Virtual Machines, select the virtual machine that you want to configure. The virtual machine must be off in order to modify its settings.
3. In the Action pane, under the virtual machine name, click Settings. Then, in the navigation pane, click RemoteFX 3D Video Adapter.
4. On the RemoteFX 3D Video Adapter page, specify the number of monitors and resolutions, and then click OK.

When you are using the virtual 3D video adapter, you will not be able to use the Virtual Machine Connection.

Use Remote Desktop instead. If you need to use Virtual Machine Connection, you must remove the virtual 3D video card from the virtual machine.

Question No : 12 - (Topic 2)

You need to implement a solution to deploy patches to all of the client computers. The solution must meet the technical requirements.

What should you do first?

- A. Install the Windows Server Update Services Tools feature on SRV-PRI.
- B. Install the Configuration Manager console on SRV-WSUS.
- C. Install the Configuration Manager console on SRV-DP.
- D. Install the Windows Server Update Services Tools feature on SRV-DP.

Answer: A

Explanation:

The company identifies the following technical requirements:

- Configuration Manager must be used to deploy operating systems and patches.
- An existing virtual machine that runs Windows 8 must be used as the reference computer for the deployment of new client computers.
- To troubleshoot installation issues, technicians must be able to open a Command Prompt window during the deployment of Windows 8 to the new client computers.

There is already a WSUS (SRV-WSUS) server present in our network.

We can continue to use it by integrating it with SCCM or replace it by transferring metadata and updates to our future Software Update Point on the SCCM primary site server.

In order to achieve this WSUS SDK / Wsus management console -connected to the wsus- is a prerequisite on the primary Site server.

2. You need a SUP at every primary site - unlike other WSUS-based implementations, SCCM requires one at every site to function.

Question No : 13 - (Topic 2)

You are evaluating the implementation of virtual desktops on non-clustered servers.

You need to recommend which RDS collection type must be used to provision the virtual desktops for the sales users. The solution must meet the sales department requirements.

Which type of collection should you recommend?

- A. An unmanaged pooled virtual desktop collection
- B. An unmanaged personal virtual desktop collection

- C. A managed pooled virtual desktop collection
- D. A managed personal virtual desktop collection

Answer: C

Question No : 14 - (Topic 2)

You need to configure RDS to use certificates to meet the sales department requirements.

What should you do?

- A. On the RD Virtualization Host servers, install a certificate in the personal store of the local computer.
- B. On the RD Web Access servers, edit the properties of the RDWeb website.
- C. On the RD Connection Broker servers, edit the deployment properties.
- D. On the RD Connection Broker servers, edit the collection properties.

Answer: C

Explanation:

The company identifies the following requirements for the sales users:

- All of the files on the laptop computers must be encrypted.
- The amount of administrative effort must be minimized whenever possible.
- Certificate warnings must not be displayed when connecting to virtual desktops.
- The availability of the virtual desktops must not be affected by a single server failure.
- The desktop computers of the sales users must be replaced by virtual desktops that run Windows 8.
- The contents of each sales user's Documents folder must be the same on the virtual desktop and the laptop computer.
- The sales users must be able to connect to their virtual desktop from their laptop computer without using a VPN connection.
- The sales users must be able to configure their user settings independently on their virtual desktop and their laptop computer.
- The line-of-business applications must be installed on the virtual desktops only. The line-of-business applications require hardware acceleration to run.

Once this certificate has been created it needs to be applied to the RD Gateway and RD Web Access servers.

This is done in the RDS Deployment Properties

Question No : 15 - (Topic 2)

You need to recommend a solution for protecting the files stored on the laptop computers of the sales users. The solution must meet the sales department requirements.

What should you recommend?

- A. BitLocker Drive Encryption (BitLocker) that uses a SID-based protector
- B. BitLocker Drive Encryption (BitLocker) that uses a password protector
- C. Encrypting File System (EFS) that uses certificates from a certification authority (CA)
- D. Encrypting File System (EFS) that uses self-signed certificates

Answer: B

Explanation:

- All of the files on the laptop computers must be encrypted.

Active Directory SID-based protector. This protector can be added to both operating system and data volumes, although it does not unlock operating system volumes in the pre-boot environment. The protector requires the SID for the domain account or group to link with the protector. BitLocker can protect a clusteraware disk by adding a SID-based protector for the Cluster Name Object (CNO) that lets the disk properly failover to and be unlocked by any member computer of the cluster.

The ADAccountOrGroup protector requires the use of an additional protector for use (such as TPM, PIN, or recovery key) when used on operating system volumes

To add an ADAccountOrGroup protector to a volume requires either the actual domain SID or the group name preceded by the domain and a backslash. In the example below, the CONTOSO\Administrator account is added as a protector to the data volume G.

Active Directory-based protectors are normally used to unlock Failover Cluster enabled volumes.

Question No : 16 - (Topic 2)

You need to ensure that when the sales users connect to their virtual desktop by using RD Web Access, the users can select the Experience setting manually from the RD Web Access website.

What should you include in the solution?

- A. On the RD Connection Broker Host servers, install the Quality Windows Audio Video Experience feature.
- B. On the RD Web Access servers, modify the Default.aspx file located in %SYSTEMROOT%\Web \RDWeb\Pages.
- C. On the RD Virtualization Host servers, install the Quality Windows Audio Video Experience feature.
- D. On the RD Web Access servers, modify the Web.config file located in %SYSTEMROOT%\Web \RDWeb\Pages.

Answer: D

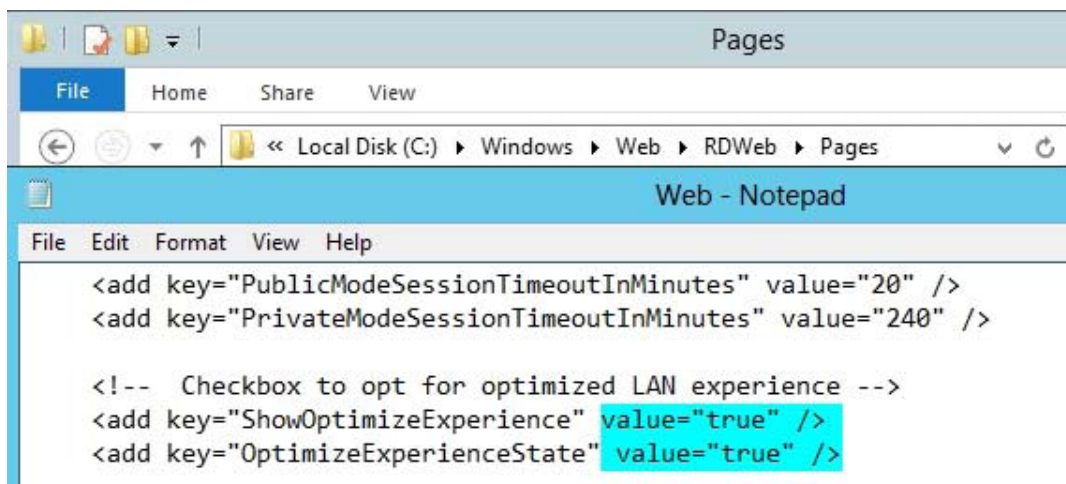
Explanation:

The option is used for RemoteFX.

This is the same as the option connection type:i:6 in the properties of a RDP.

By setting the values below we can choose whether to show this option or not.

<http://technet.microsoft.com/en-us/library/gg607274%28WS.10%29.aspx>



C:\Documents and Settings\usernwz1\Desktop\1.PNG

Question No : 17 - (Topic 2)

You need to recommend a configuration of the RD Gateway servers to allow the sales users to connect to their virtual desktop.

The solution must meet the sales department requirements.

What should you include in the recommendation?

- A. SSL bridging by using HTTPS-HTTP bridging
- B. SSL bridging by using HTTPS-HTTPS bridging
- C. A Remote Desktop resource authorization policy (RD RAP) that uses an RD Gateway-managed computer group
- D. A Remote Desktop resource authorization policy (RD RAP) that uses a network resource group in Active Directory Domain Services (AD DS)

Answer: C

Explanation:

An RD Gateway-managed group is a group of computers maintained by an RD Gateway, instead of Active Directory.

Most of the time, specifying Active Directory computer groups in RD RAPs will make the most sense.

If you have an RD Session Host farm, though, you'll have to create an RD Gateway-managed group to control access to the farm via RD Gateway.

Active Directory doesn't have a way of identifying multiple RD Session Host servers by their farm name.

Requirements:

The availability of the virtual desktops must not be affected by a single server failure.

See planned changes: 2 Virtualization host servers, 2 RD Web Access servers

Question No : 18 - (Topic 2)

You need to ensure that the technicians can troubleshoot the operating system deployments. The solution must meet the technical requirements.

Which properties should you modify?

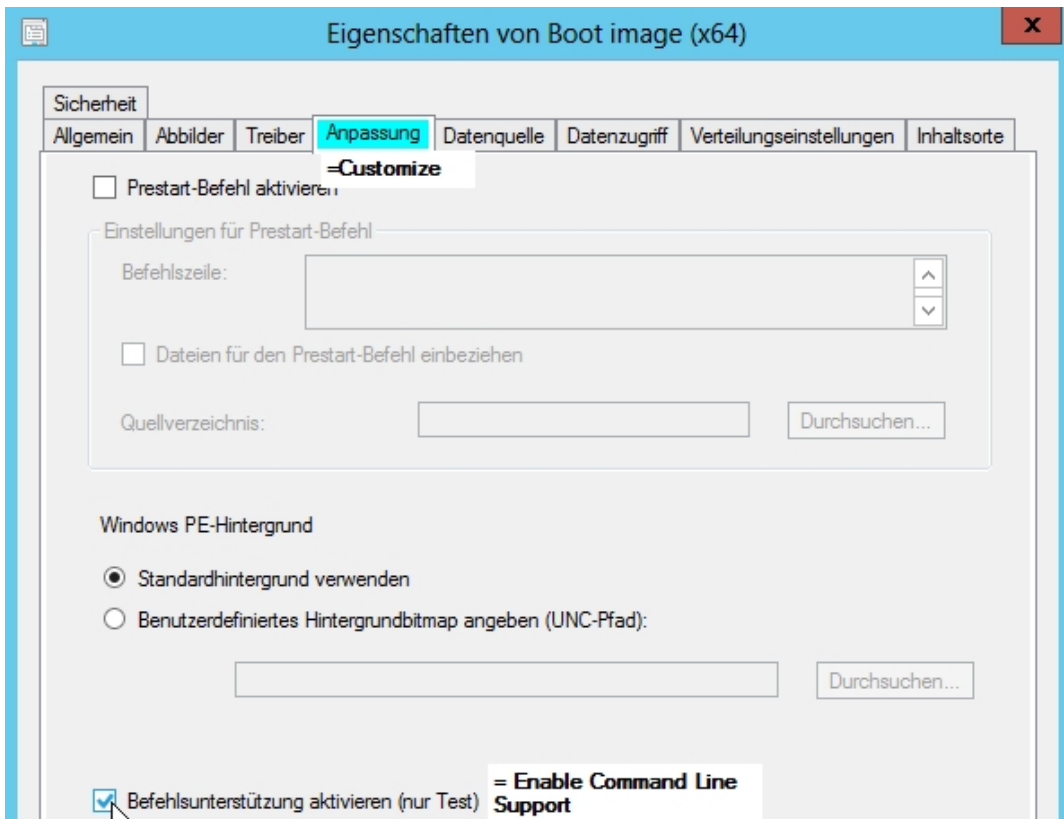
- A. Distribution point
- B. Boot image
- C. Install image
- D. Operating system installer

Answer: B

Explanation:

- To troubleshoot installation issues, technicians must be able to open a Command Prompt window during the deployment of Windows 8 to the new client computers.

Enable command line support (F8) on the boot image in SCCM.



C:\Documents and Settings\usernwz1\Desktop\1.PNG

Question No : 19 - (Topic 2)

You need to create an operating system image for the deployment of Windows 8. The solution must meet the technical requirements.

What should you create?

- A. A script that runs the WIM2VHD utility
- B. A stand-alone media task sequence
- C. A capture media task sequence
- D. A build and capture task sequence

Answer: D

Explanation:

An existing virtual machine that runs Windows 8 must be used as the reference computer for the deployment of new client computers.

<http://www.kozeniauskas.com/itblog/2008/01/18/sccm-creating-capture-media/>

A build and capture task sequence is used to create the Master (or Core) image.

The image created in the build and capture task is the image to be used in the Deploy Task Sequence.

<http://www.windows-noob.com/forums/index.php?/topic/3946-using-sccm-2012-beta2-in-a-lab-part-7-deploying-windows-7-enterprise/>

Question No : 20 - (Topic 2)

You need to recommend a solution for managing the user state of the virtual desktops. The solution must meet the sales department requirements.

What should you include in the recommendation?

- A. Roaming profiles and home folders
- B. Roaming profiles and Folder Redirection
- C. User profile disks and Folder Redirection
- D. User profile disks and roaming profiles

Answer: C

Explanation:

The sales users must be able to configure their user settings independently on their virtual desktop and their laptop computer.

The contents of each sales user's Documents folder must be the same on the virtual desktop and the laptop computer.

User profile disks:

As the user logs on to different virtual machines within the pool or different hosts within the session collection, the User Profile Disk gets mounted, providing access to the complete profile.

Folder Redirection:

The contents of each sales user's Documents folder must be the same on the virtual desktop and the laptop computer.

Question No : 21 - (Topic 2)

You need to recommend a change to the network to ensure that you can perform a bare metal deployment of Windows 8. The solution must meet the technical requirements.

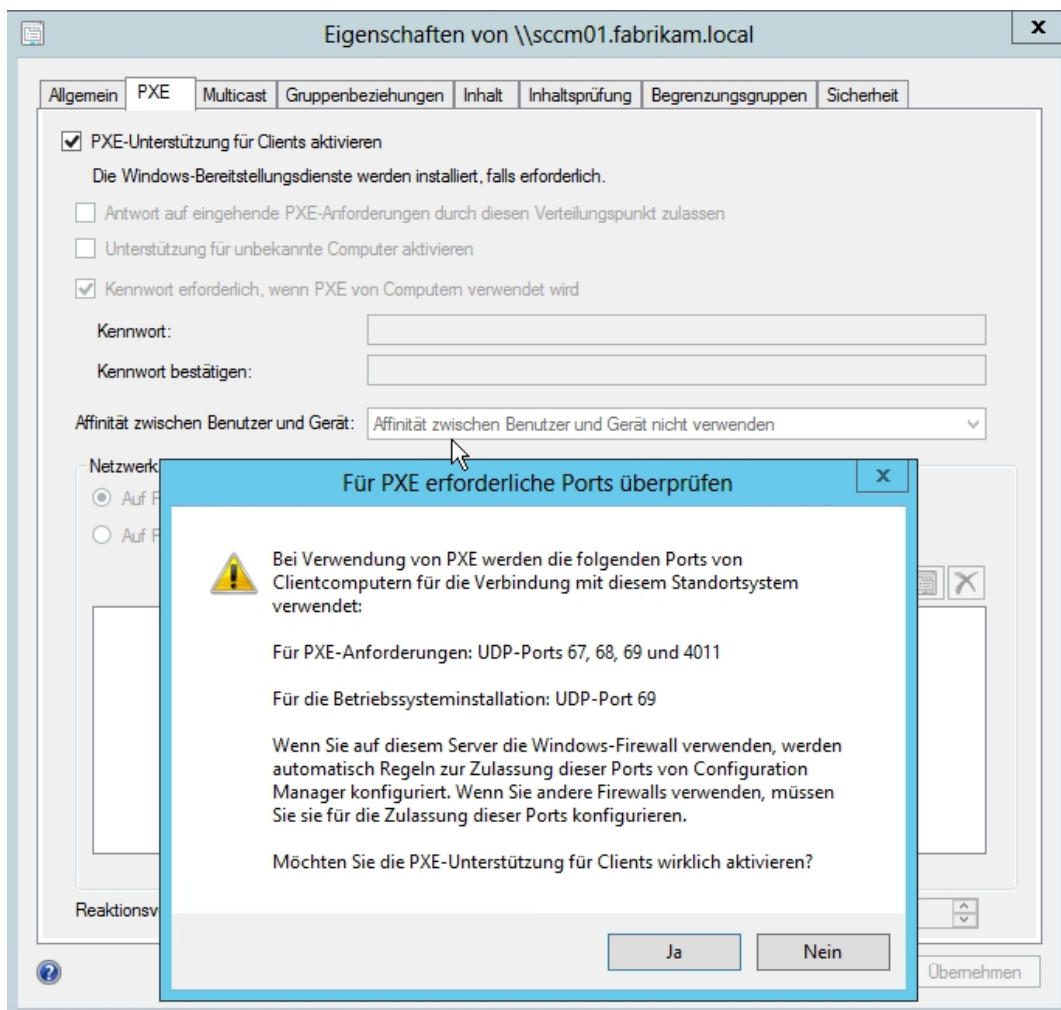
What should you recommend?

- A. On SRV-DP, enable PXE support for clients from the Configuration Manager console.
- B. On SRV-DHCP, configure options 66 and 67.
- C. On SRV-DHCP, install the Windows Deployment Services server role and configure option 60.
- D. On SRV-DP, install the Windows Deployment Services server role and configure a PXE Response Policy from the Windows Deployment Services console.

Answer: A

Explanation:

Enabling PXE support on the Distribution Point will achieve the technical requirements. If you enable the Checkbox for PXE Support, this will automatically install WDS transport. The appropriate ports UDP 67,68,69 and 4011 will be opened in the firewall. Sorry for german screenshot.



C:\Documents and Settings\usernwz1\Desktop\1.PNG

Topic 3, Litware, Inc

Overview

Litware, Inc., is a manufacturing company. A. Datum Corporation is a competitor of Litware. Litware has a main office and two branch offices. The main office is located in Seattle. The branch offices are located in Los Angeles and Boston. The offices connect to each other by using T1 leased lines.

A. Datum has a main office in New York. Existing Environment

Active Directory

The Litware network contains one Active Directory forest named litwareinc.com. The A. Datum network contains one Active Directory forest named adatum.com. Network Infrastructure All Litware servers run Windows Server 2012.

Each Litware office contains two domain controllers. Each domain controller is configured as a DNS server.

The Seattle office has the following servers:

- ✍ Two file servers
- ✍ Two domain controllers
- ✍ One Windows Server update Services (WSUS) server
- ✍ Five Hyper-V hosts that host multiple virtual machines
- ✍ A Remote Desktop Services (RDS) infrastructure that contains five Remote Desktop Session Host (RD Session Host) servers in two session collections, one Remote Desktop Connection Broker (RD Connection Broker) server, and one Remote Desktop Web Access (RD Web Access) server.

All client computers in Litware run Windows 8. The client computers are configured to download updates from WSUS. An application named App4 is included in the standard desktop image that is deployed to each client computer.

Requirements

Planned Changes

Litware plans to implement the following changes:

- ✍ Expand the company by acquiring A. Datum.
- ✍ Add more RD Web Access servers to the RDS infrastructure.
- ✍ Publish three applications named App1, App2, and App3 as RemoteApp programs.
- ✍ Deploy two virtualized applications named App5 and App6 as Microsoft Application Virtualization (App-V) packages.
- ✍ Deploy App-V 5.0 management servers, publishing servers, and reporting servers.

Technical Requirements

Litware must meet the following technical requirements:

- ✍ Minimize the amount of administrative effort whenever possible.
- ✍ Ensure that an RD Connection Broker server is available if a single server fails.
- ✍ Protect the connections to the RD Web Access server by using a trusted certificate.
- ✍ Perform an application inventory of the applications in A. Datum without installing additional software on the client computers in A. Datum.

Application Requirements

Litware must meet the following application requirements:

- ✍ Ensure that App1 can be started by using document invocation.
- ✍ Ensure that App1 is available on the Start screen of client computers that run Windows 8.
- ✍ Organize the published RemoteApp programs by application type on the RD Web Access website.
- ✍ Prevent users in the human resources (HR) department from running App4.
- ✍ Administer App-V from a server named Server1.
- ✍ Ensure that App5 and App6 can communicate with each other when they run in the virtual environment.
- ✍ Ensure that the virtualized applications are downloaded from a server in the same office as the client computer that is downloading the applications.
- ✍ Ensure that the virtualized applications are fully downloaded to a client computer before users can run the applications.
- ✍ Update App4 in the standard desktop image to a new version named App4A. The App4A update is a Microsoft Installer (MSI) package.
- ✍ Deploy application updates for App4 to the client computers by using WSUS.

Question No : 22 DRAG DROP - (Topic 3)

You need to update App4 in the standard desktop image. The solution must meet the technical requirements and the application requirements.

Which four actions should you perform?

To answer, move the four appropriate actions from the list of actions to the answer area and arrange them in the correct order.

Actions	Answer Area
Run the App4A MSI package.	
Unmount the image and commit the changes.	
Add the App4A MSI package to the image.	
Mount the image.	
Export the image.	
Deploy the image.	
Capture the image.	
Generalize the installation.	

Answer:

Actions	Answer Area
Run the App4A MSI package.	Deploy the image.
Unmount the image and commit the changes.	Run the App4A MSI package.
Add the App4A MSI package to the image.	Generalize the installation.
Mount the image.	Capture the image.
Export the image.	
Deploy the image.	
Capture the image.	
Generalize the installation.	

Explanation:



C:\Users\Kamran\Desktop\Untitled.jpg

Question No : 23 - (Topic 3)

You need to implement a software inventory solution for the A. Datum network. The solution must meet the technical requirements.

What should you implement?

- A. The Microsoft Deployment Toolkit (MDT)
- B. The Microsoft Assessment and Planning (MAP) Toolkit
- C. The Windows Assessment and Deployment Kit (Windows ADK)
- D. Windows Intune

Answer: B

Explanation: Intune requires an agent installed which is a direct conflict with the technical requirement to not install additional software

(<http://www.microsoft.com/sam/en/us/intune.aspx>)

MAP is an agent-less inventory service (<http://www.microsoft.com/sam/en/us/map.aspx>)

Question No : 24 - (Topic 3)

You need to recommend a solution to update App4 on the client computers that already have the application deployed. The solution must meet the application requirements.

What should you include in the recommendation?

- A. Add a package to the software installation settings of a Group Policy object (GPO).
- B. Use Import Updates from the Update Services console.
- C. Run wsusutil.exe and specify the import parameter.
- D. Run a script that uses the WSUS Application Programming Interface (API) for local publishing.

Answer: D

Question No : 25 - (Topic 3)

You need to secure the RD Web Access servers. The solution must meet the technical requirements.

What should you do?

- A. From Server Manager, edit the deployment properties.
- B. From the Certificates console, import the custom certificate to the personal certificates store of the local computer.
- C. From Server Manager, edit the collection properties.
- D. From the Certificates console, import the custom certificate to the Remote Desktop certificates store of the local computer.

Answer: A

Question No : 26 - (Topic 3)

You need to recommend a solution to deploy App1. The solution must meet the application requirements. What should you include in the recommendation?

- A. Create an .rdp file for App1, and then copy the file to the client computers by using a logon script.
- B. Configure the software installation settings in a Group Policy object (GPO).
- C. Configure the RemoteApp and Desktop Connections setting in a Group Policy object

(GPO).

D. Create an .rdp file for App1, and then copy the file to the client computers by using a startup script.

Answer: C

Explanation: Using a GPO to set the RA and RD Connections allows you to input a URL that publishes the applications and then allows them to use document invocation.

Question No : 27 - (Topic 3)

You need to configure the virtualized applications to ensure that they download fully before they can run on the client computers.

What should you use?

- A. Microsoft System Center 2012 App Controller
- B. The App-V Sequencer
- C. Microsoft System Center 2012 Virtual Machine Manager (VMM)
- D. The Application Virtualization Management Console

Answer: B

Question No : 28 - (Topic 3)

You need to recommend a solution to deliver the virtualized applications to the client computers. The solution must meet the application requirements.

What should you include in the recommendation?

- A. Enhanced Storage
- B. BranchCache
- C. File Replication Service (FRS)
- D. Distributed File System (DFS)

Answer: D

Question No : 29 - (Topic 3)

You need to implement an RDS infrastructure to meet the technical requirements.

What should you do first?

- A. Install Microsoft SQL Server 2008 R2.
- B. Install the Failover Clustering feature.
- C. Install the Windows Internal Database feature.
- D. Install the Network Load Balancing (NLB) feature.

Answer: D

Question No : 30 - (Topic 3)

You virtualize App5 and App6.

You need to ensure that App5 and App6 meet the application requirements.

What should you do?

- A. From the Application Virtualization Management Console, add a connection group.
- B. From the Application Virtualization Management Console, upgrade the packages.
- C. From the Microsoft Application Virtualization Sequencer, modify the Properties settings of App5 and App6.
- D. From the Microsoft Application Virtualization Sequencer, modify the Deployment settings of App5 and App6.

Answer: A

Explanation: <http://blogs.technet.com/b/appv/archive/2012/11/06/deploying-connection-groups-app-v-5-0.aspx>

Question No : 31 - (Topic 3)

You need to meet the application requirements for administering the App-V infrastructure.

What should you install on Server1?

- A. The Microsoft Visual C++ 2010 Redistributable Package
- B. Microsoft SQL Server Native Client
- C. Microsoft .NET Framework 4.5
- D. Microsoft Silver light

Answer: D

Explanation: <http://technet.microsoft.com/en-us/library/jj713458.aspx>

Management console requires Silverlight, Visual C++2010 **SP1**, and .Net **4.0**.

Question No : 32 - (Topic 3)

You need to configure security for the HR users to meet the application requirements

What should you configure in Group Policy Management Editor?

- A. Security Options
- B. Restricted Groups
- C. Public Key Policies
- D. Application Control Policies

Answer: D

Topic 4, A.Datum Corporation

Overview

A.Datum Corporation is a geological research company.

The company has a main office and a branch office. The main office is located in Seattle. The branch office is located in Miami.

Users in the research department work in the Miami office.

Existing Environment

Active Directory

The network contains a single-domain Active Directory forest named adatum.com. Network Infrastructure.

The relevant servers on the network are configured as shown in the following table.

Server name	Location	Role
DC1	Seattle	Domain controller DNS server
DC2	Miami	Domain controller DNS server
SRV-FS1	Seattle	File server
SRV-FS2	Miami	File server

Content on SRV-FS1 and SRV-FS2 is replicated by using Distributed File System (DFS) Replication. All shared content is accessible through the UNC path of \\contoso.com\shared\data.

All client computers run Windows XP. All of the client computers have Microsoft Office 2007 installed. All applications are installed locally on the client computers.

The Miami office connects to the Seattle office by using a site-to-site VPN connection. Research users in the Miami office use two applications named App1 and App2. The research users are divided into two groups named Adatum\ResearchManagers and Adatum\ResearchStaff.

The IT department has a custom install image of Windows 8. The image contains internally developed Windows Store apps.

Windows Server Update Services (WSUS) is used to deploy patches to the client computers.

User Issues

Users report that when App1 and App2 run concurrently, the applications crash.

Requirements Planned Changes

The company plans to implement the following changes:

- ✍ Deploy a Remote Desktop Services (RDS) infrastructure that runs Windows Server 2012. The infrastructure will be located in the Seattle office and will contain the following servers:
 - ✍ Two Remote Desktop Virtualization Host (RD Virtualization Host) servers
 - ✍ Two Remote Desktop Connection Broker (RD Connection Broker) servers
 - ✍ Two Remote Desktop Session Host (RD Session Host) servers
 - ✍ Two Remote Desktop Web Access (RD Web Access) servers
 - ✍ Two Remote Desktop Gateway (RD Gateway) servers
- ✍ Implement the desktops of the users in the Miami office by using a Virtual Desktop

Infrastructure (VDI) and replace the desktop hardware with thin client devices.

- ✍ Deploy a Windows Server 2012-based Microsoft Application Virtualization (App-V) infrastructure in the Seattle office that contains the following servers:
- ✍ Two App-V management servers
- ✍ Two App-V publishing servers
- ✍ One App-V reporting server
- ✍ Standardize the client operating system on the 64-bit version of Windows 8.
- ✍ Publish an application named App3 as a ReroteApp program.

Technical Requirements

The company must meet the following technical requirements:

- ✍ The disk space used by the VDI must be minimized.
- ✍ The amount of administrative effort must be minimized whenever possible.
- ✍ The members of Adatum\ResearchManagers must have priority to the system resources on the RD Session Host servers.
- ✍ The availability of the RemoteApps programs, the App-V apps, and the virtual desktops must not be affected if a single server fails.
- ✍ The RD Session Host server will be installed on a server that is several years old. Only 20 percent of the sessions must be established to this server.

Application Requirements

The company must meet the following application requirements:

- ✍ Several custom add-ins for Office 2010 must be deployed.
- ✍ App1 and App2 must be published as Remote App programs.
- ✍ Application conflicts between App1 and App2 must be eliminated.
- ✍ Office 2010 must be deployed by using an existing App-V package.
- ✍ Updated Windows Store apps must be included in the Windows 8 image.
- ✍ The reporting server must be used to monitor the usage of the App-V apps.
- ✍ Users in the human resource (HR) department must be able to use existing 16-bit applications.
- ✍ The research users must be able to launch App3 by double-clicking files that have an .app3 extension.

Question No : 33 - (Topic 4)

You need to install Office 2010 on virtual desktops that run Windows 8. The virtual desktops will be used by the research users in the Miami office. The solution must meet the technical requirements.

What should you do first?

- A. Run the App-V client setup and specify the /sharedcontentstoremode switch.
- B. Run the App-V client setup and specify the /migrationmode switch.
- C. Run the Office Customization Tool (OCT).
- D. Run the Office Migration Planning Manager (OMPM).

Answer: A

Question No : 34 - (Topic 4)

You need to recommend a solution for the HR users that meets the application requirements.

What should you recommend?

- A. Client Hyper-V
- B. An App-V 5.0 client on an RD Session Host server
- C. An App-V 5.0 client
- D. A RemoteApp program on an RD Session Host server

Answer: A

Explanation: App-V does not support 16bit applications. RemoteApp is running from a 64bit OS; 16bit apps are not supported on a 64bit OS.

Question No : 35 - (Topic 4)

You need to update the Windows 8 image. The solution must meet the application requirements.

What should you do first?

- A. Run dism and specify the /export-defaultappassociations switch.
- B. Run dism and specify the /removeprovisionedappxpackage switch.
- C. Run dism and specify the /remove-package switch.
- D. Run dism and specify the /check-apppatch switch.

Answer: B

Question No : 36 - (Topic 4)

You publish App3 as a RemoteApp program.

You need to configure App3 to meet the application requirements.

What should you do?

- A. On the RD Session Host servers, modify the Windows Installer RDS Compatibility setting. On client computers, modify the Remote Desktop Connection settings.
- B. From Remote Desktop Services, modify the properties of the App3 RemoteApp program. On the client computers, configure the RemoteApp and Desktop Connection feed.
- C. From Remote Desktop Services, modify the properties of the collection to which the App3 RemoteApp program is published. On the client computers, configure the RemoteApp and Desktop Connection feed.
- D. From Remote Desktop Services, modify the properties of the collection to which the App3 RemoteApp program is published. On client computers, modify the Remote Desktop Connection settings.

Answer: B

Question No : 37 - (Topic 4)

You need to recommend a solution for deploying the Office 2010 add-ins. The solution must meet the application requirements.

What should you include in the recommendation?

- A. From Server Manager, create a collection.
- B. From Group Policy Management, assign the add-ins to users.
- C. From Group Policy Management, assign add-in to client computers.
- D. From the Application Virtualization Management Console, create a connection group.

Answer: D

Question No : 38 - (Topic 4)

You need to monitor the usage of the APP-V applications. The Solution must meet the application requirements.

What should you do?

- A. On the App-V management servers, run Update-AppvServerConnectionGroup.
- B. On the App-V publishing servers, run Set-AppvPublishingServer.
- C. On the clients computers, run Publish-AppVClientPackages.
- D. On the client computers, run Set-AppvClientConfiguration.

Answer: C

Question No : 39 - (Topic 4)

You need to recommend a solution to ensure that the App-V applications are available to the research users. The solution must meet the technical requirements.

What should you include in the recommendation?

- A. Deploy the App-V publishing server to the Miami office.
- B. Store the App-V database on the \\Contoso.com\Shared\Data share.
- C. Deploy the App-V management server to the Miami office.
- D. Store the App-V packages on the \\Contoso.com\Shared\Data share.

Answer: B

Question No : 40 - (Topic 4)

You need to recommend a solution to distribute sessions to the RD Session Host servers. The solution must meet the technical requirements.

What should you recommend?

- A. On the RD Session Host servers, install and configure the Windows System Resource Manager feature.
- B. On the RD Connection Broker servers, configure the deployment properties.
- C. On the RD Web Access servers, modify the Web.config file located in %Systemroot%\Web\RDWeb\Pages.
- D. On the RD Connection Broker servers, configure the collection

Answer: D

Question No : 41 - (Topic 4)

You identify a hotfix published on the Microsoft Support website. The hotfix applies to a locally installed application.

You need to apply the hotfix to all of the client computers that have the application installed.

What should you do?

- A. Create a Group Policy startup script that runs wuactl.exe.
- B. Run wsusutil.exe and specify the import switch.
- C. Create a Group Policy startup script that runs wusa.exe.
- D. Run wsusutil.exe and specify the use custom website switch.

Answer: C

Explanation: <http://support.microsoft.com/kb/934307>

WUSA can be used to script hotfix installations. Hotfixes that are downloaded from MS but not available as part of the standard update catalog cannot be installed with WSUS.

Question No : 42 - (Topic 4)

You need to deploy App1 and App2 to the RD Session Host servers. The solution must meet the application requirements.

What should you do first?

- A. Install Microsoft Silverlight.
- B. Install the Windows Internal Database feature.
- C. Install the Quality Windows Audio Video feature
- D. Install the App-V Remote Desktop Services client.

Answer: D

Question No : 43 - (Topic 4)

You need to ensure that the members of Adatum\ResearchManagers have priority to the system resources on the RD Session Host servers. The solution must meet the technical requirements.

What should you do?

- A. On the RD Session Host servers, configure the Fair Share CPU Scheduling settings.
- B. On the RD Connection Broker servers, configure the collection properties.
- C. On the RD Session Host servers, install and configure the Windows System Resource Manager feature.
- D. On the RD Session Host servers, install and configure the Windows Process Activation Service feature.

Answer: C

Question No : 44 - (Topic 4)

You need to configure the virtual desktops for the Miami office users. The solution must meet the technical requirements.

What should you create?

- A. An unmanaged personal virtual desktop collection
- B. An unmanaged pooled virtual desktop collection
- C. A managed pooled virtual desktop collection
- D. A managed personal virtual desktop collection

Answer: C

Topic 5, Mixed Questions (A)

Question No : 45 - (Topic 5)

Your network contains an Active Directory domain named contoso.com.

You have a custom image of Windows 8 that contains a Windows Store application named Appl.

You need to remove App1 completely from the image. You must achieve the goal by using the minimum amount of administrative effort.

What should you do?

A. Run the `dism.exe` command and specify the `/image` parameter and the `/Remove-Package` parameter.

B. Run the `dism.exe` command and specify the `/image` parameter and the `/Remove-ProvisionedAppxPackage` parameter.

C. Run the `imagex.exe` command and specify the `/mountrw` parameter and the `/delete` parameter.

D. Run the `imagex.exe` command and specify the `/mountrw` parameter and the `/cleanup` parameter.

Answer: B

Explanation:

You run `dism -online /Remove-ProvisionedAppxPackage /PackageName:<packagename>` to un-provision the Appx Packages.

Removing or Updating Windows 8 built-in Windows Store apps causes Sysprep to fail.

The correct way of removing the package is to remove the package for the user running sysprep and also remove the provisioning. This can be done using the following Powershell cmdlets:

1. `Import-Module Appx`
2. `Import-Module Dism`
3. `Get-AppxPackage -AllUser | Where PublisherId -eq 8wekyb3d8bbwe | Format-List -Property PackageFullName,PackageUserInformation`

Notes:

- o From the output of the above command, check the users for whom the package is showing up as **Installed**. Delete these user accounts from the reference machine, or log in to the machine using these user accounts and run Step 4 to remove the Appx Package.
- o The above command lists all packages that were published by Microsoft and installed by any user of that reference machine. Since the machine is to be sysprepped, we assume that these user profiles no longer need the package.
- o If you have manually provisioned apps belonging to other publishers, then use the command below to list them:

Get-AppxPackage -AllUser | Format-List -Property PackageFullName,PackageUserInformation

4. `Remove-AppxPackage -Package <packagefullname>`
5. Remove the Provisioning using the following cmdlet: `Remove-AppxProvisionedPackage -Online -PackageName <packagefullname>`

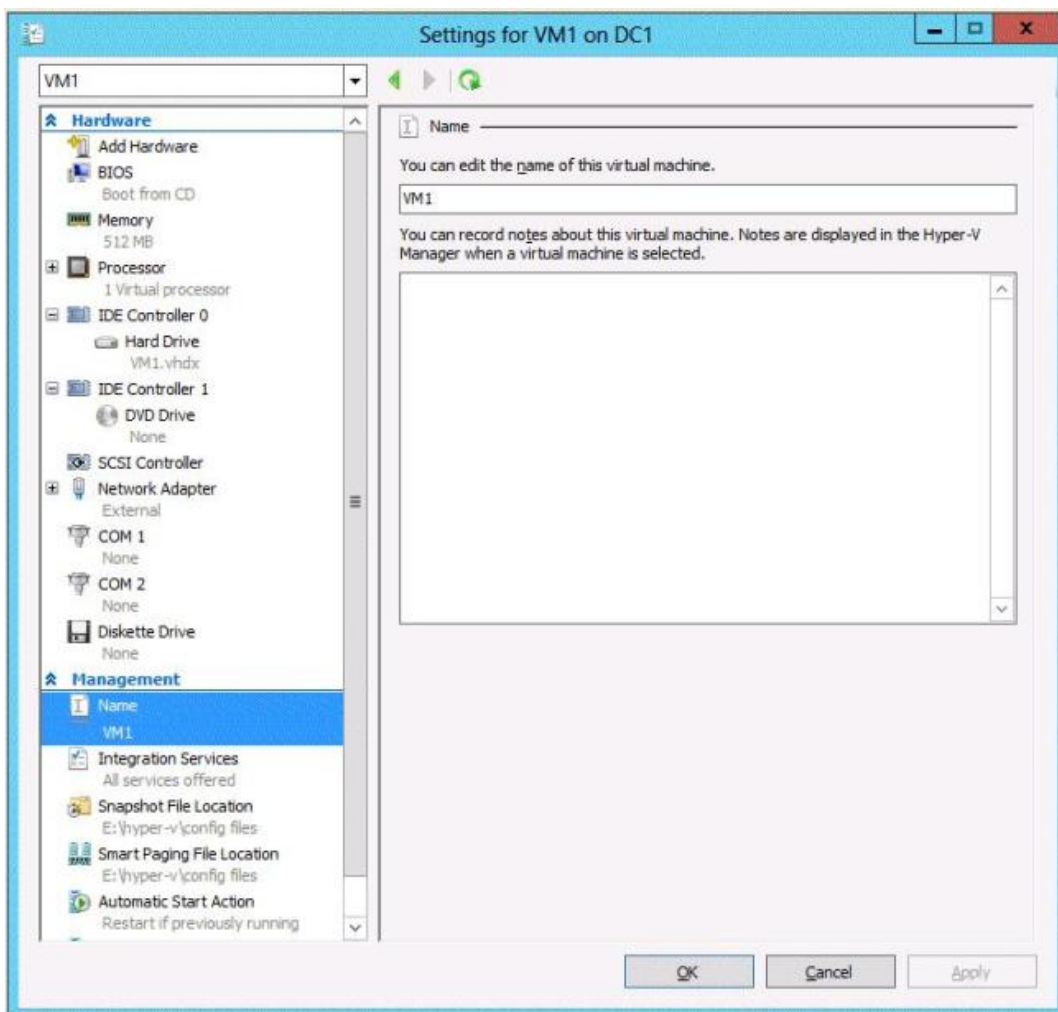
Note: The issue will not occur if you are servicing an offline image since then the provisioning is automatically cleared for all users, including the user who runs the command.

C:\Documents and Settings\usernwz1\Desktop\1.PNG

Question No : 46 - (Topic 5)

Your network contains a server named Server1 that runs Windows Server 2012. Server1 has the Windows Deployment Services server role installed.

You have a virtual machine named VM1. VM1 is configured as shown in the exhibit. (Click the Exhibit button.)



You need to ensure that you can capture an image of VM1 by using Windows Deployment Services (WDS).

What should you do?

- A. Add a legacy network adapter to VM1 and a capture image to Server1.

- B. Add an install image and a capture image to Server1.
- C. Add a legacy network adapter to VM1 and a discovery image to Server1.
- D. Add a discovery image and a capture image to Server1.

Answer: A

Explanation:

Add a legacy network adapter to VM1 and a capture image to Server1.

Without the exhibit, we can only guess that the VM is configured without a legacy network adapter. PXE is only available on a legacy network adapter in HV.

Question No : 47 HOTSPOT - (Topic 5)

Your network contains an Active Directory domain named contoso.com. The domain has Microsoft System Center 2012 Configuration Manager deployed.

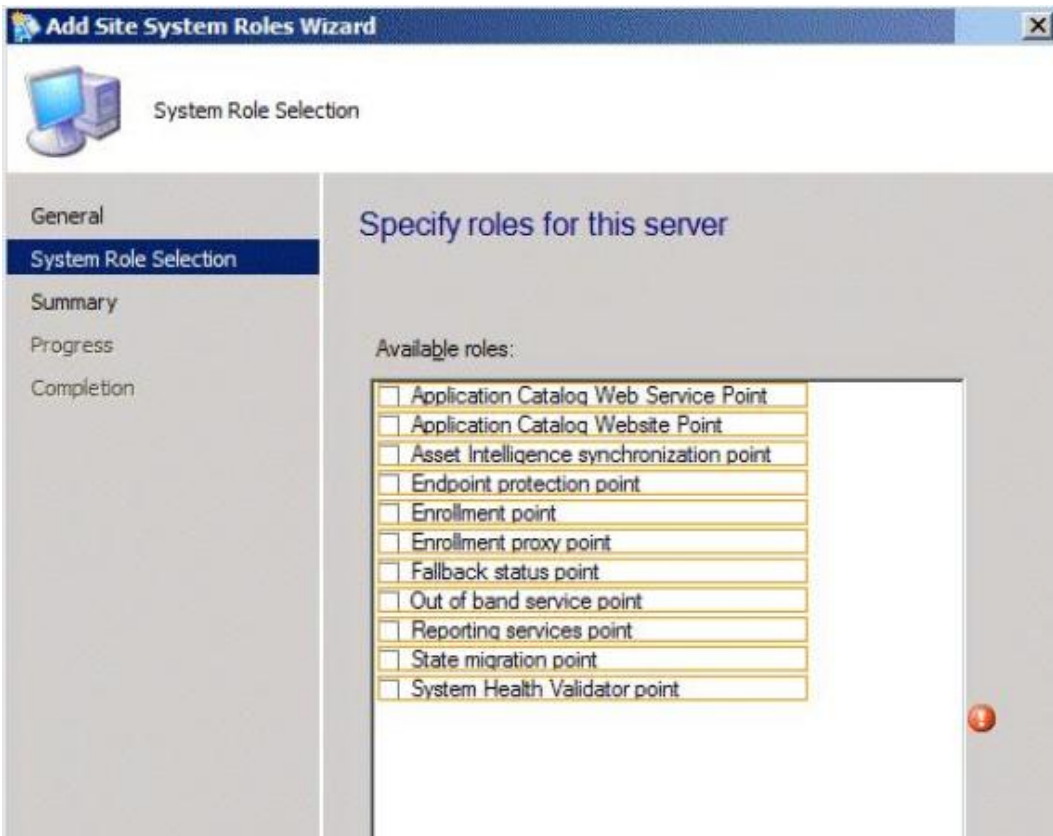
All client computers run Windows XP.

Your company plans to replace all of the client computers with new computers that run Windows 8.

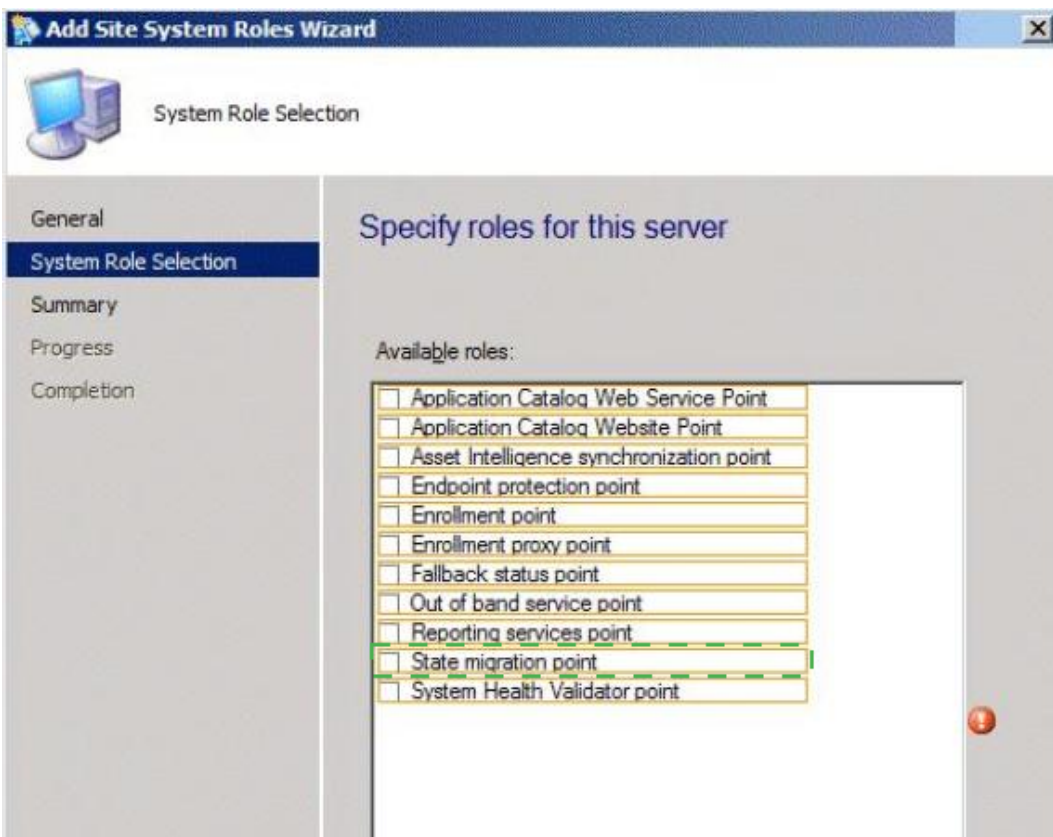
You need to recommend which Configuration Manager system role must be deployed to capture the local application data from the Windows XP computers, and then deploy the local application data to the Windows 8 computers.

Which system role should you recommend?

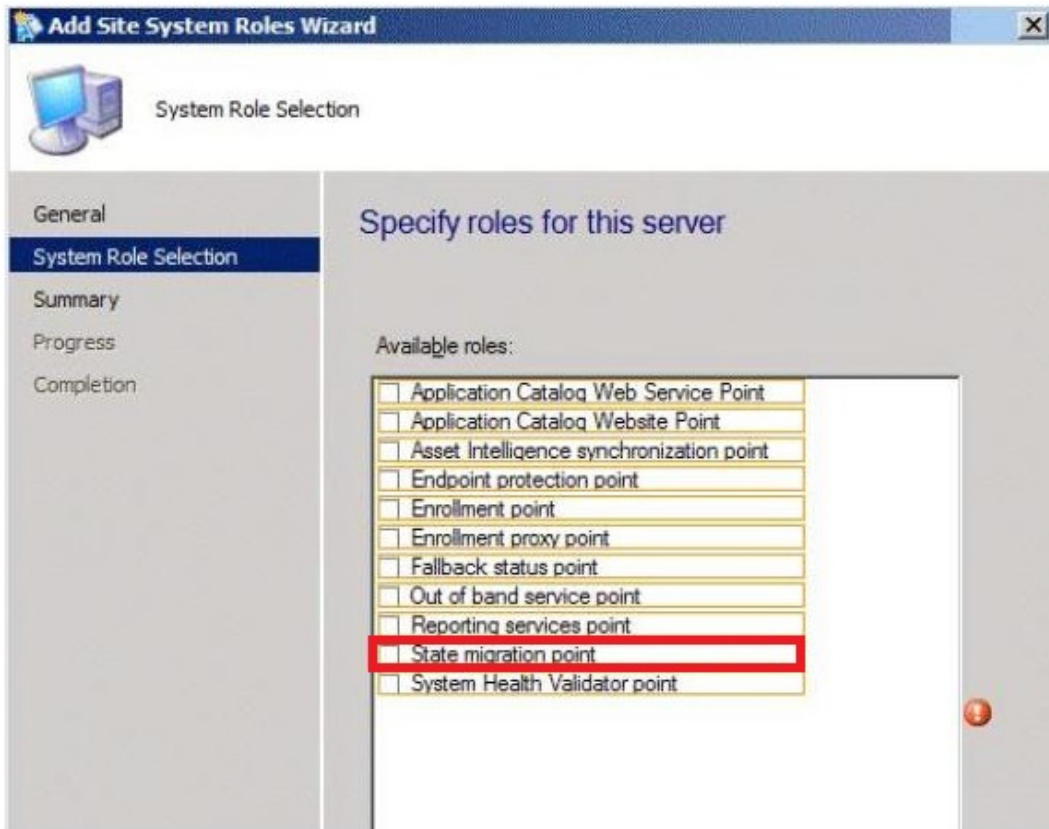
To answer, select the appropriate system role in the answer area.



Answer:



Explanation:



The state migration point is a Configuration Manager 2007 site role that provides a location to store user state information before an operating system deployment. You can store the user state on the state migration point while the operating system deployment proceeds and then restore the user state to the new computer from the state migration point. Each state migration point site server can only be a member of one Configuration Manager 2007 site. The state migration point requires Internet Information Services (IIS).

Question No : 48 - (Topic 5)

Your network contains a Hyper-V cluster named Cluster1. You install Microsoft System Center 2012 Virtual Machine Manager (VMM). You create a user account for another administrator named User1. You plan to provide User1 with the ability to manage only the virtual machines that User1 creates. You need to identify what must be created before you delegate the required permissions. What should you identify?

A. A cloud

- B. A service template
- C. A host group
- D. A Delegated Administrator

Answer: A

Question No : 49 - (Topic 5)

Your network contains an Active Directory domain named contoso.com. The domain has Remote Desktop Services (RDS) deployed. The deployment contains two Remote Desktop Web Access (RD Web Access) servers named Server1 and Server2.

You need to implement a solution to ensure that users can access RD Web Access if a single RD Web Access server fails.

Which solution should you implement?

More than one answer choice may achieve the goal. Select the BEST answer.

- A. Multipath I/O (MPIO)
- B. Network Load Balancing (NLB)
- C. Failover Clustering
- D. DNS round robin

Answer: B

Explanation:

<http://blogs.technet.com/b/marobbin2/archive/2012/10/10/configuring-a-windows-2012-rdg-nlb-cluster.aspx>

Question No : 50 DRAG DROP - (Topic 5)

Your company has multiple departments. The departments are configured as shown in the following table.

Department name	User characteristic	Requirement
Sales	Always work outside of the corporate office and cannot access the internal network.	All software must be preinstalled on the users' client computer.
Human resources	Always work from inside the internal network and are connected to the LAN.	Users must have core line-of-business applications preinstalled on their client computer and must be allowed to install additional productivity applications as needed.
Developers	Always work from inside the internal network and are connected to the LAN.	Users must have all software deployed by using Group Policy software assignment.

You plan to deploy Windows 8 to the client computers.

You need to recommend an imaging strategy for each department. The solution must minimize the amount of time required to deploy the images to the client computers.

Which imaging strategy should you recommend?

To answer, drag the appropriate image type to the correct department in the answer area. Each image type may be used once, more than once, or not at all. Additionally, you may need to drag the split bar between panes or scroll to view content.

Image Types	Answer Area
Thick	Sales
Thin	Human resources
Hybrid	Developers
	Image type
	Image type
	Image type

Answer:



Question No : 51 - (Topic 5)

Your network contains an Active Directory domain named contoso.com. The domain has Remote Desktop Services (RDS) deployed. The domain contains six servers. The servers are configured as shown in the following table.

Server name	Configuration
Server1	Remote Desktop Session Host (RD Session Host)
Server2	Remote Desktop Session Host (RD Session Host)
Server3	Remote Desktop Connection Broker (RD Connection Broker)
Server4	Remote Desktop Web Access (RD Web Access)
Server5	Microsoft SQL Server 2008 R2
Server6	None

You plan to configure Server6 as an additional RD Connection Broker in the RDS deployment.

You need to identify which servers require the SQL Server Native Client installed.

Which servers should you identify? (Each correct answer presents part of the solution. Choose all that apply.)

- A. Server1
- B. Server2
- C. Server3

- D. Server4
- E. Server5
- F. Server6

Answer: C,F

Explanation:

You must have a SQL Server setup that can be used by the RD Connection Broker servers to store data. At least SQL Server 2008 R2 must be used, and the minimum recommended SQL Server SKU for this is Standard with at least 4GB of RAM.

RD Connection Broker High Availability in Windows Server 2012

Question No : 52 - (Topic 5)

Your network contains an Active Directory domain named contoso.com.

You have 20 secure client computers that do not have DVD drives or USB ports. The client computers run Windows XP and use an application named App1. App1 only runs on Windows XP. The client computers have multiple partitions.

You need to configure the client computers to dual-boot between Windows XP and Windows 8.

You copy the Windows 8 source files to a network share.

What should you do next from the network share?

- A. Copy Install.wim to the local hard disk drive, and then run bcdedit.exe.
- B. Copy Boot.wim to the local hard disk drive, and then run bcdboot.exe.
- C. Run dism.exe.
- D. Run setup.exe.

Answer: D

Question No : 53 - (Topic 5)

Your network contains an Active Directory domain named contoso.com. The domain

contains a Virtual Desktop Infrastructure (VDI).

You plan to create a new virtual desktop collection that will contain 500 virtual desktops. Each virtual desktop will be assigned to a specific user. All of the virtual desktops will be based on the same virtual machine template.

You need to recommend the configuration for the virtual desktop collection.

Which configuration should you recommend?

More than one answer choice may achieve the goal. Select the BEST answer.

- A. A managed pooled virtual desktop collection
- B. An unmanaged pooled virtual desktop collection
- C. A managed personal virtual desktop collection
- D. An unmanaged personal virtual desktop collection

Answer: C

Explanation:

Virtual Machine-based desktop Deployment is of two types:

Personal Virtual Desktop Collection – Administrators manually assign virtual desktops to the users.

Pooled Virtual Desktop Collection - Administrators deploy virtual desktops and users are randomly assigned virtual desktops. At log off virtual desktops are generally rolled back (rollback is optional).

Creating a Pooled Virtual Desktop Collection

There are two types of Pooled Virtual desktop Collections:

Pooled Managed.

The Virtual desktop machine is created using the Sysprep Template of a virtual machine.

We can recreate the virtual desktops from this image at will.

Pooled Unmanaged We can add the existing virtual machine to this virtual desktop collection from Hyper V pool.

With either option, the administrator can configure the pool to store the user profiles on User Profile disks separate from the machines.

Question No : 54 - (Topic 5)

Your network contains an Active Directory domain named contoso.com. The domain contains a server named Server1 that is a part of a Remote Desktops Services (RDS) deployment.

The computer account of Server1 is in an organizational unit (OU) named Servers. All of the client computers are in an OU named OU1.

Server1 has a session collection named Collection1 that contains multiple RemoteApp programs.

You need to prevent users from using printer redirection when they connect to Server1 by using the Remote Desktop client.

What should you do?

- A. Link a Group Policy object (GPO) to OU1. Configure the User Configuration settings of the GPO.
- B. Link a Group Policy object (GPO) to Servers. Configure the Computer Configuration settings of the GPO.
- C. Link a Group Policy object (GPO) to Servers. Configure the User Configuration settings of the GPO.
- D. Link a Group Policy object (GPO) to the Domain Controllers OU. Configure the Computer Configuration settings of the GPO.

Answer: B

Question No : 55 - (Topic 5)

Your network contains an Active Directory domain named contoso.com. The domain contains servers that run Windows Server 2012.

You plan to deploy a Remote Desktop Virtualization Host (RD Virtualization Host) that will contain five virtual desktops. The requirement of each virtual desktop is shown in the following table.

Virtual desktop name	Requirement
VD1	Must support creating snapshots of virtual disks.
VD2	Must support dynamically expanding virtual disks.
VD3	Must support differencing virtual hard disks.
VD4	Must support adding or removing storage when the virtual machine runs.
VD5	Must support at least three virtual disk controllers on each virtual machine.

You need to identify which virtual desktop or virtual desktops require a virtual SCSI controller.

Which virtual desktop or desktops should you identify? (Each correct answer presents part of the solution. Choose all that apply.)

- A. VD1
- B. VD2
- C. VD3
- D. VD4
- E. VD5

Answer: A,D

Question No : 56 - (Topic 5)

Your network contains an Active Directory domain named contoso.com. The network contains two servers named Server1 and Server2 that run Windows Server 2012. Server1 has the Remote Desktop Visualization Host role service installed. Server2 has the Remote Desktop Web Access role service installed.

The network contains a Virtual Desktop Infrastructure (VDI).

You plan to use an existing virtual machine as the new pooled virtual desktop base image for Standard Deployment.

The virtual machine has the following configurations:

- ✍ Uses a static IP address
- ✍ Is a member of a workgroup
- ✍ Runs the Windows 8 operation system

You need to ensure that you can use the virtual machine as the template virtual machine for the VDI deployment.

What should you do? (Each correct answer presents part of the solution. Choose all that apply.)

- A. Connect the virtual machine to the Remote Desktop Services (RDS) virtual network.
- B. Run sysprep.exe on the virtual machine.
- C. Join the virtual machine to the domain.
- D. On the virtual machine, import a Secure Sockets Layer (SSL) certificate.
- E. On Server1, import a Secure Sockets Layer (SSL) certificate.

Answer: A,B

Question No : 57 - (Topic 5)

Your network contains an Active Directory domain named contoso.com. The domain contains two servers named Server1 and Server2 that run Windows Server 2012. Server1 has the Windows Deployment Services server role and the Microsoft Deployment Toolkit (MDT) installed. Server2 has Windows Server Update Services (WSUS) installed.

You have an image of Windows 8 that is deployed by using MDT 2012.

You plan to deploy a new hardware device to all new client computers. The new hardware requires additional device drivers that are unavailable from Microsoft Update.

You need to add the hardware drivers to the Windows 8 image.

What should you do?

- A. From Server1, add the new drivers to Deployment Workbench, and then create a task sequence.
- B. From Server1, install the Windows Internal Database, and then copy the drivers to C:\Windows\System32\DriverStore\Temp.
- C. From Server1, mount the image, and then run the Add-WindowsPackage cmdlet.
- D. From Server2, copy the drivers to the Inventory folder.

Answer: C

Explanation: * Add-WindowsPackage

Adds a single .cab or .msu file to a Windows image

Question No : 58 HOTSPOT - (Topic 5)

Your network contains an Active Directory domain named contoso.com.

You plan to implement Encrypting File System (EFS) to encrypt data on the client computer of each user.

You need to prevent EFS from generating self-signed certificates.

What should you use in Group Policy Management Editor?

To answer, select the appropriate Group Policy setting in the answer area.

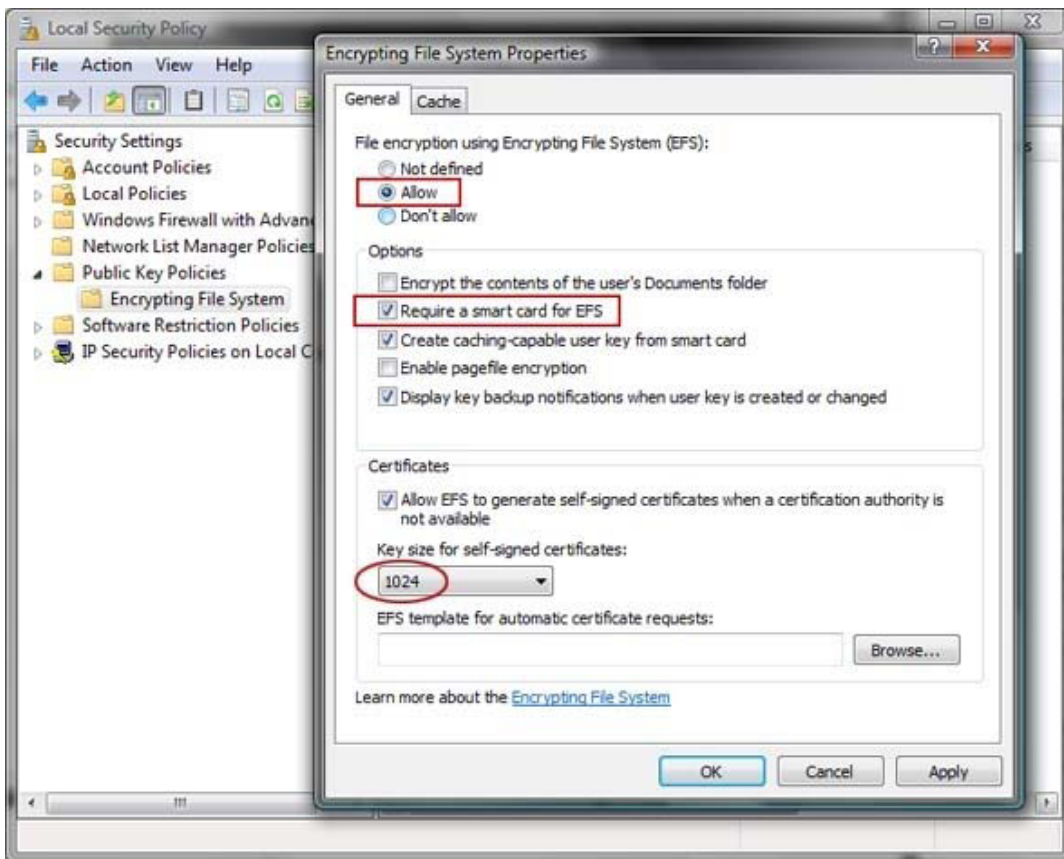


Answer:



Explanation:





C:\Documents and Settings\usernwz1\Desktop\1.PNG

Question No : 59 DRAG DROP - (Topic 5)

Your network contains an Active Directory domain named contoso.com. The domain contains multiple servers that are configured as Hyper-V hosts. You plan to implement four virtual machines. The virtual machines will be configured as shown in the following table.

You need to identify which network must be added to each virtual machine. Which network types should you identify? To answer, drag the appropriate Network Type to the correct virtual machine in the answer area. Each Network Type may be used once, more than once, or not at all. Additionally, you may need to drag the split bar between panes or scroll to view content.

Network Types	
Private	
Internal	
External	

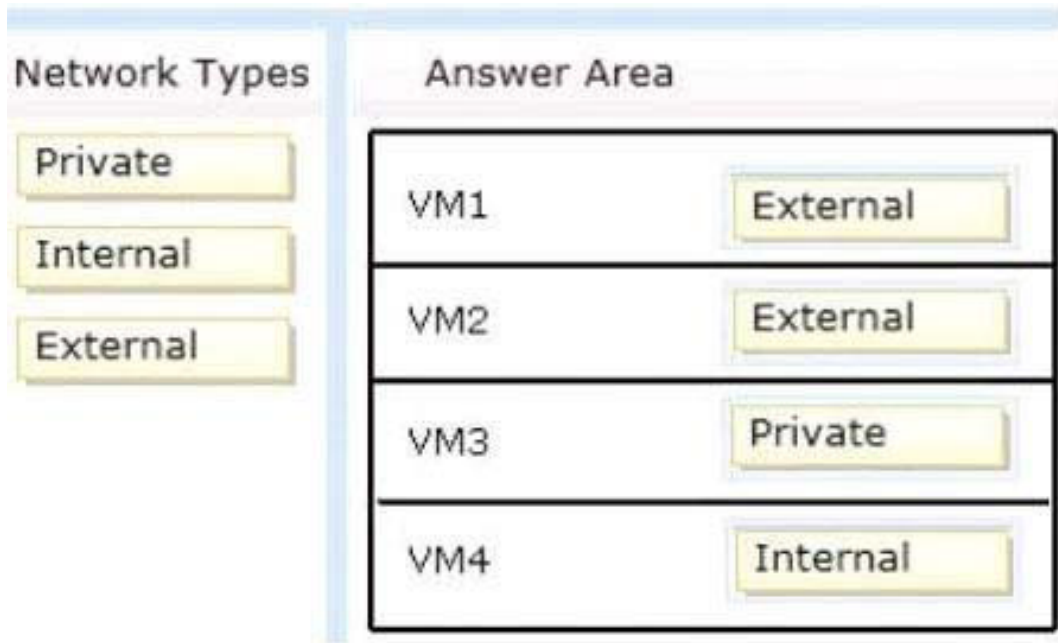
Answer Area	
VM1	Network
VM2	Network
VM3	Network
VM4	Network

Answer:

Network Types	
Private	
Internal	
External	

Answer Area	
VM1	External
VM2	External
VM3	Private
VM4	Internal

Explanation:



C:\Documents and Settings\usernwz1\Desktop\1.PNG

An external network, which provides communication between a virtual machine and a physical network by creating an association to a physical network adapter on the virtualization server.

An internal network, which provides communication between the virtualization server and virtual machines. A private network, which provides communication between virtual machines only.

<http://technet.microsoft.com/en-us/library/cc732470%28v=WS.10%29.aspx>

Question No : 60 HOTSPOT - (Topic 5)

Your network contains an Active Directory domain named contoso.com. The domain contains a Virtual Desktop Infrastructure (VDI) and pooled virtual desktops.

Users start virtual desktop sessions by using Remote Desktop Web Access (RD Web Access).

Some users access virtual desktops by using a Remote Desktop Gateway (RD Gateway).

You need to identify which users are connected currently to the virtual desktops.

Which tool should you use?

To answer, select the appropriate tool in the answer area.



Answer:



Question No : 61 - (Topic 5)

Your network contains an Active Directory domain named contoso.com. You plan to deploy personal virtual desktops.

You create a standard desktop that contains multiple desktop shortcuts to line-of-business applications. Administrators frequently update the desktop shortcuts.

You need to recommend a solution to prevent users from modifying the desktop shortcuts and from adding additional files to the desktop.

What should you include in the recommendation?

More than one answer choice may achieve the goal. Select the BEST answer.

- A. Roaming profiles and NTFS permissions
- B. Mandatory profiles
- C. User profile disks
- D. Folder Redirection and NTFS permissions

Answer: D

Question No : 62 - (Topic 5)

Your network contains a Virtual Desktop Infrastructure (VDI). The VDI contains five Hyper-V hosts. The Hyper-V hosts are in a failover cluster.

You need to recommend a solution to distribute automatically the virtual desktops based on the current resource usage of the Hyper-V hosts.

What should you include in the recommendation?

- A. Microsoft System Center 2012 virtual Machine Manager (VMM)
- B. Hyper-V Replica Broker
- C. Windows System Resource Manager (WSRM)
- D. Microsoft System Center 2012 Configuration Manager

Answer: A

Question No : 63 DRAG DROP - (Topic 5)

Your network contains an Active Directory domain named contoso.com. The domain contains two servers named Server1 and Server2 that have Microsoft Deployment Toolkit (MDT) 2012 installed. Server1 is used for testing and Server2 is used to deploy images to production computers.

On Server1, you have several deployments of Windows 7 and Windows 8.

You need to replicate only the content related to the Windows 8 deployments from Server1 to Server2.

What three actions should you perform from the Deployment Workbench?

To answer, move the three appropriate actions from the list of actions to the answer area and arrange them in the correct order.

Actions	Answer Area
On Server1, create a linked deployment share.	
On Server2, create a linked deployment share.	
On Server1, create a selection profile.	
On Server2, run Update Deployment Share.	
On Server2, create a selection profile.	
On Server2, run Replicate Content.	
On Server1, run Replicate Content.	
On Server1, run Update Deployment Share.	

Answer:

Actions	Answer Area
On Server1, create a linked deployment share.	On Server2, create a selection profile.
On Server2, create a linked deployment share.	On Server1, create a linked deployment share.
On Server1, create a selection profile.	On Server1, run Replicate Content.
On Server2, run Update Deployment Share.	
On Server2, create a selection profile.	
On Server2, run Replicate Content.	
On Server1, run Replicate Content.	
On Server1, run Update Deployment Share.	

Explanation:

- Box 1: On Server2, create a selection profile.
- Box 2: On Server1, create a linked deployment share.
- Box 3: On Server1, run Replicate content.

Note:

* When you replicate a deployment share, you can replicate everything or you can choose which folders in the deployment share to replicate. You choose folders to replicate by creating selection profiles. A selection profile simply selects folders across applications, operating systems, out-of-box drivers, packages, and task sequences. You create a selection profile in advance, and then you choose that selection profile when you set up replication.

Microsoft Exams List

70-246 Dump PDF VCE	70-485 Dump PDF VCE	70-742 Dump PDF VCE	98-366 Dump PDF VCE
70-247 Dump PDF VCE	70-486 Dump PDF VCE	70-743 Dump PDF VCE	98-367 Dump PDF VCE
70-331 Dump PDF VCE	70-487 Dump PDF VCE	70-744 Dump PDF VCE	98-368 Dump PDF VCE
70-332 Dump PDF VCE	70-488 Dump PDF VCE	70-761 Dump PDF VCE	98-369 Dump PDF VCE
70-333 Dump PDF VCE	70-489 Dump PDF VCE	70-762 Dump PDF VCE	98-372 Dump PDF VCE
70-334 Dump PDF VCE	70-490 Dump PDF VCE	70-765 Dump PDF VCE	98-373 Dump PDF VCE
70-339 Dump PDF VCE	70-491 Dump PDF VCE	70-768 Dump PDF VCE	98-374 Dump PDF VCE
70-341 Dump PDF VCE	70-492 Dump PDF VCE	70-980 Dump PDF VCE	98-375 Dump PDF VCE
70-342 Dump PDF VCE	70-494 Dump PDF VCE	70-981 Dump PDF VCE	98-379 Dump PDF VCE
70-345 Dump PDF VCE	70-496 Dump PDF VCE	70-982 Dump PDF VCE	MB2-700 Dump PDF VCE
70-346 Dump PDF VCE	70-497 Dump PDF VCE	74-343 Dump PDF VCE	MB2-701 Dump PDF VCE
70-347 Dump PDF VCE	70-498 Dump PDF VCE	74-344 Dump PDF VCE	MB2-702 Dump PDF VCE
70-348 Dump PDF VCE	70-499 Dump PDF VCE	74-409 Dump PDF VCE	MB2-703 Dump PDF VCE
70-354 Dump PDF VCE	70-517 Dump PDF VCE	74-678 Dump PDF VCE	MB2-704 Dump PDF VCE
70-383 Dump PDF VCE	70-532 Dump PDF VCE	74-697 Dump PDF VCE	MB2-707 Dump PDF VCE
70-384 Dump PDF VCE	70-533 Dump PDF VCE	77-420 Dump PDF VCE	MB2-710 Dump PDF VCE
70-385 Dump PDF VCE	70-534 Dump PDF VCE	77-427 Dump PDF VCE	MB2-711 Dump PDF VCE
70-410 Dump PDF VCE	70-640 Dump PDF VCE	77-600 Dump PDF VCE	MB2-712 Dump PDF VCE
70-411 Dump PDF VCE	70-642 Dump PDF VCE	77-601 Dump PDF VCE	MB2-713 Dump PDF VCE
70-412 Dump PDF VCE	70-646 Dump PDF VCE	77-602 Dump PDF VCE	MB2-714 Dump PDF VCE
70-413 Dump PDF VCE	70-673 Dump PDF VCE	77-603 Dump PDF VCE	MB2-715 Dump PDF VCE
70-414 Dump PDF VCE	70-680 Dump PDF VCE	77-604 Dump PDF VCE	MB2-716 Dump PDF VCE
70-417 Dump PDF VCE	70-681 Dump PDF VCE	77-605 Dump PDF VCE	MB2-717 Dump PDF VCE
70-461 Dump PDF VCE	70-682 Dump PDF VCE	77-881 Dump PDF VCE	MB2-718 Dump PDF VCE
70-462 Dump PDF VCE	70-684 Dump PDF VCE	77-882 Dump PDF VCE	MB5-705 Dump PDF VCE
70-463 Dump PDF VCE	70-685 Dump PDF VCE	77-883 Dump PDF VCE	MB6-700 Dump PDF VCE
70-464 Dump PDF VCE	70-686 Dump PDF VCE	77-884 Dump PDF VCE	MB6-701 Dump PDF VCE
70-465 Dump PDF VCE	70-687 Dump PDF VCE	77-885 Dump PDF VCE	MB6-702 Dump PDF VCE
70-466 Dump PDF VCE	70-688 Dump PDF VCE	77-886 Dump PDF VCE	MB6-703 Dump PDF VCE
70-467 Dump PDF VCE	70-689 Dump PDF VCE	77-887 Dump PDF VCE	MB6-704 Dump PDF VCE
70-469 Dump PDF VCE	70-692 Dump PDF VCE	77-888 Dump PDF VCE	MB6-705 Dump PDF VCE
70-470 Dump PDF VCE	70-695 Dump PDF VCE	77-891 Dump PDF VCE	MB6-884 Dump PDF VCE
70-473 Dump PDF VCE	70-696 Dump PDF VCE	98-349 Dump PDF VCE	MB6-885 Dump PDF VCE
70-480 Dump PDF VCE	70-697 Dump PDF VCE	98-361 Dump PDF VCE	MB6-886 Dump PDF VCE
70-481 Dump PDF VCE	70-698 Dump PDF VCE	98-362 Dump PDF VCE	MB6-889 Dump PDF VCE
70-482 Dump PDF VCE	70-734 Dump PDF VCE	98-363 Dump PDF VCE	MB6-890 Dump PDF VCE
70-483 Dump PDF VCE	70-740 Dump PDF VCE	98-364 Dump PDF VCE	MB6-892 Dump PDF VCE
70-484 Dump PDF VCE	70-741 Dump PDF VCE	98-365 Dump PDF VCE	MB6-893 Dump PDF VCE

Cisco Exams List

010-151 Dump PDF VCE	350-018 Dump PDF VCE	642-737 Dump PDF VCE	650-667 Dump PDF VCE
100-105 Dump PDF VCE	352-001 Dump PDF VCE	642-742 Dump PDF VCE	650-669 Dump PDF VCE
200-001 Dump PDF VCE	400-051 Dump PDF VCE	642-883 Dump PDF VCE	650-752 Dump PDF VCE
200-105 Dump PDF VCE	400-101 Dump PDF VCE	642-885 Dump PDF VCE	650-756 Dump PDF VCE
200-120 Dump PDF VCE	400-151 Dump PDF VCE	642-887 Dump PDF VCE	650-968 Dump PDF VCE
200-125 Dump PDF VCE	400-201 Dump PDF VCE	642-889 Dump PDF VCE	700-001 Dump PDF VCE
200-150 Dump PDF VCE	400-251 Dump PDF VCE	642-980 Dump PDF VCE	700-037 Dump PDF VCE
200-155 Dump PDF VCE	400-351 Dump PDF VCE	642-996 Dump PDF VCE	700-038 Dump PDF VCE
200-310 Dump PDF VCE	500-006 Dump PDF VCE	642-997 Dump PDF VCE	700-039 Dump PDF VCE
200-355 Dump PDF VCE	500-007 Dump PDF VCE	642-998 Dump PDF VCE	700-101 Dump PDF VCE
200-401 Dump PDF VCE	500-051 Dump PDF VCE	642-999 Dump PDF VCE	700-104 Dump PDF VCE
200-601 Dump PDF VCE	500-052 Dump PDF VCE	644-066 Dump PDF VCE	700-201 Dump PDF VCE
210-060 Dump PDF VCE	500-170 Dump PDF VCE	644-068 Dump PDF VCE	700-205 Dump PDF VCE
210-065 Dump PDF VCE	500-201 Dump PDF VCE	644-906 Dump PDF VCE	700-260 Dump PDF VCE
210-250 Dump PDF VCE	500-202 Dump PDF VCE	646-048 Dump PDF VCE	700-270 Dump PDF VCE
210-255 Dump PDF VCE	500-254 Dump PDF VCE	646-365 Dump PDF VCE	700-280 Dump PDF VCE
210-260 Dump PDF VCE	500-258 Dump PDF VCE	646-580 Dump PDF VCE	700-281 Dump PDF VCE
210-451 Dump PDF VCE	500-260 Dump PDF VCE	646-671 Dump PDF VCE	700-295 Dump PDF VCE
210-455 Dump PDF VCE	500-265 Dump PDF VCE	646-985 Dump PDF VCE	700-501 Dump PDF VCE
300-070 Dump PDF VCE	500-275 Dump PDF VCE	648-232 Dump PDF VCE	700-505 Dump PDF VCE
300-075 Dump PDF VCE	500-280 Dump PDF VCE	648-238 Dump PDF VCE	700-601 Dump PDF VCE
300-080 Dump PDF VCE	500-285 Dump PDF VCE	648-244 Dump PDF VCE	700-602 Dump PDF VCE
300-085 Dump PDF VCE	500-290 Dump PDF VCE	648-247 Dump PDF VCE	700-603 Dump PDF VCE
300-101 Dump PDF VCE	500-801 Dump PDF VCE	648-375 Dump PDF VCE	700-701 Dump PDF VCE
300-115 Dump PDF VCE	600-199 Dump PDF VCE	648-385 Dump PDF VCE	700-702 Dump PDF VCE
300-135 Dump PDF VCE	600-210 Dump PDF VCE	650-032 Dump PDF VCE	700-703 Dump PDF VCE
300-160 Dump PDF VCE	600-211 Dump PDF VCE	650-042 Dump PDF VCE	700-801 Dump PDF VCE
300-165 Dump PDF VCE	600-212 Dump PDF VCE	650-059 Dump PDF VCE	700-802 Dump PDF VCE
300-180 Dump PDF VCE	600-455 Dump PDF VCE	650-082 Dump PDF VCE	700-803 Dump PDF VCE
300-206 Dump PDF VCE	600-460 Dump PDF VCE	650-127 Dump PDF VCE	810-403 Dump PDF VCE
300-207 Dump PDF VCE	600-501 Dump PDF VCE	650-128 Dump PDF VCE	820-424 Dump PDF VCE
300-208 Dump PDF VCE	600-502 Dump PDF VCE	650-148 Dump PDF VCE	840-425 Dump PDF VCE
300-209 Dump PDF VCE	600-503 Dump PDF VCE	650-159 Dump PDF VCE	
300-210 Dump PDF VCE	600-504 Dump PDF VCE	650-281 Dump PDF VCE	
300-320 Dump PDF VCE	640-692 Dump PDF VCE	650-393 Dump PDF VCE	
300-360 Dump PDF VCE	640-875 Dump PDF VCE	650-472 Dump PDF VCE	
300-365 Dump PDF VCE	640-878 Dump PDF VCE	650-474 Dump PDF VCE	
300-370 Dump PDF VCE	640-911 Dump PDF VCE	650-575 Dump PDF VCE	
300-375 Dump PDF VCE	640-916 Dump PDF VCE	650-621 Dump PDF VCE	
300-465 Dump PDF VCE	642-035 Dump PDF VCE	650-663 Dump PDF VCE	
300-470 Dump PDF VCE	642-732 Dump PDF VCE	650-665 Dump PDF VCE	
300-475 Dump PDF VCE	642-747 Dump PDF VCE	650-754 Dump PDF VCE	

HOT EXAMS

Cisco

[100-105 Dumps VCE PDF](#)
[200-105 Dumps VCE PDF](#)
[300-101 Dumps VCE PDF](#)
[300-115 Dumps VCE PDF](#)
[300-135 Dumps VCE PDF](#)
[300-320 Dumps VCE PDF](#)
[400-101 Dumps VCE PDF](#)
[640-911 Dumps VCE PDF](#)
[640-916 Dumps VCE PDF](#)

Microsoft

[70-410 Dumps VCE PDF](#)
[70-411 Dumps VCE PDF](#)
[70-412 Dumps VCE PDF](#)
[70-413 Dumps VCE PDF](#)
[70-414 Dumps VCE PDF](#)
[70-417 Dumps VCE PDF](#)
[70-461 Dumps VCE PDF](#)
[70-462 Dumps VCE PDF](#)
[70-463 Dumps VCE PDF](#)
[70-464 Dumps VCE PDF](#)
[70-465 Dumps VCE PDF](#)
[70-480 Dumps VCE PDF](#)
[70-483 Dumps VCE PDF](#)
[70-486 Dumps VCE PDF](#)
[70-487 Dumps VCE PDF](#)

CompTIA

[220-901 Dumps VCE PDF](#)
[220-902 Dumps VCE PDF](#)
[N10-006 Dumps VCE PDF](#)
[SY0-401 Dumps VCE PDF](#)