



**Vendor: Microsoft**

**Exam Code: 70-743**

**Exam Name: Upgrading Your Skills to MCSA: Windows Server  
2016**

**Version: Demo**



**QUESTION 2**

**HOTSPOT**

You have a server that runs Windows Server 2016. You run the commands shown in the following output PS G:\> Get-DedupVolume | fl

```

Volume                : G:
VolumeId              : \\?\Volume{2efa2f6e-db4a-4bb1-aa15-31ae8b073d16}\
Enabled               : True
UsageType             : Default
DataAccessEnabled     : True
Capacity              : 923.87 GB
FreeSpace              : 393.98 GB
UsedSpace              : 529.89 GB
UnoptimizedSize       : 1008.7 GB
SavedSpace             : 478.82 GB
SavingsRate           : 47 %
MinimumFileAgeDays    : 3
MinimumFileSize       : 32768
NoCompress             : False
ExcludeFolder         :
ExcludeFileType       :
NoCompress            : False
ExcludeFolder         :
ExcludeFileType       :
ExcludeFileTypeDefault : {edb, jrs}
NoCompressionFileType : {asf, mov, wma, wmv...}
ChunkRedundancyThreshold : 100
Verify                : False
OptimizeInUseFiles    : False
OptimizePartialFiles  : False

PS G:\> Get-Date
Tuesday, June 21, 2016 5:29:58 PM

PS G:\DC01> dir | select Mode,LastWriteTime,Length,Name | ft -AutoSize

Mode LastWriteTime           Length      Name
----
d---- 2/18/2015 11:54:56 AM          Snapshots
d---- 2/18/2015 12:11:42 PM          Virtual Machines
-a--- 6/21/2016  5:27:40 PM 51539608064 DC01.vhd
-a--- 6/18/2016  7:00:00 AM 12400      Readme.txt
-a--- 1/5/2015   7:00:00 AM 3939235840 Software.iso
    
```

For each of the following statements, select Yes if the statement is true. Otherwise, select No.

Statements	Yes	No
DC01.vhd will be processed by deduplication	<input type="radio"/>	<input type="radio"/>
Readme.txt will be processed by deduplication.	<input type="radio"/>	<input type="radio"/>
Software.iso will be processed by deduplication.	<input type="radio"/>	<input type="radio"/>

**Correct Answer:**

Statements	Yes	No
DC01.vhd will be processed by deduplication	<input checked="" type="radio"/>	<input type="radio"/>
Readme.txt will be processed by deduplication.	<input type="radio"/>	<input checked="" type="radio"/>
Software.iso will be processed by deduplication.	<input checked="" type="radio"/>	<input type="radio"/>

**QUESTION 3**

You need to create highly available storage spaces that connect to directly attached storage on the hosts. Which cmdlet should you use?

- A. Enable-ClusterStorageSpacesDired
- B. Set-StoragePool
- C. Add-ClusterDisk
- D. Update-ClusterVirtualMachineConfiguration

**Correct Answer: A**

#### QUESTION 4

##### DRAG DROP

Your network contains an Active Directory domain named contoso.com. The domain contains two servers named Server1 and Server2 that run Windows Server 2016.

Server1 has IP Address Management (IPAM) installed. Server2 has Microsoft System Center 2016 Virtual Machine Manager (VMM) installed.

You need to integrate IPAM and VMM.

Which types of objects should you create on each server?

To answer, drag the appropriate object types to the correct servers. Each object type may be used once, more than once, or not at all. You may need to drag the split bar between panes or scroll to view content.

Access policy      Network Service

Run As Account      Service Template

User Role

Server1: Object

Server2: Object      Object

##### Correct Answer:

Access policy      Network Service

Run As Account      Service Template

User Role

Server1: Access policy      Network Service

Server2: Run As Account      Service Template

#### QUESTION 5

You have a server named Server1 that runs Windows Server 2016. You install the Docker daemon on Server1. You need to configure the Docker daemon to accept connections only on TCP port 64500. What should you do?

- A. Run theNew-NetFirewallRulecmdlet
- B. Run theSet-ServiceWindows PowerShell cmdlet.
- C. Edit the daemon.json file.
- D. Edit the configuration json file

**Correct Answer: C**

### QUESTION 6

In this section, you'll see one or more sets of questions with the same scenario and problem. Each question presents a unique solution to the problem, and you must determine whether the solution meets the stated goals. Any of the solutions might solve the problem. It is also possible that none of the solutions solve the problem.

Once you answer a question in this section, you will NOT be able to return to it.

As a result, these questions will not appear in the review screen.

Note This question is part of a series of questions that present the same scenario Each question in the series contains a unique solution Determine whether the solution meets the stated goals.

Your network contains an Active Directory forest named contoso.com. The forest contains a member server named Server1 that runs Windows Server 2016. All domain controllers run Windows Server 2012 R2.

Contoso com has the following configuration.

```
PS C:\> (Get-ADForest). ForestMode
Windows2008R2Forest

PS C:\> (Get-ADDomain). DomainMode
Windows2008R2Domain
PS C:\>
```

You plan to deploy an Active Directory Federation Services (AD FS) farm on Server1 and to configure device registration. You need to configure Active Directory to support the planned deployment.

Solution: You raise the forest functional level to Windows Server 2012 R2.

Does this meet the goal?

- A. Yes
- B. No

**Correct Answer: A**

### QUESTION 7

You have a server that runs Windows Server 2016.

The server contains a storage pool named Pool1. Pool1 contains five physical disks named Disk1, Disk2, Disk3, Disk4, and Disk5.

A virtual disk named VirtualDisk1 is stored in pool1. VirtualDisk1 uses the parity storage layout.

Disk3 fails.

You need to remove Disk3 from Pool1.

Which two commands should you run? Each correct answer presents part of the solution.

- A. Update-StoragePool -FriendlyName Pool1
- B. Reset-PhysicalDisk -FriendlyName Disk3
- C. Set-PhysicalDisk -FriendlyName Disk 3 -Usage Retired
- D. Set-ResiliencySetting -StoragePool Pool1 -PhysicalDiskRedundancyDefault 4
- E. Remove-PhysicalDisk -FriendlyName Disk3

**Correct Answer: C**

### QUESTION 8

HOTSPOT

Your network contains an Active Directory domain named contoso.com. The domain contains a DNS server named Server1.

Server1 configured to use a forwarder named server2.contoso.com that has an IP address of 10.0.0.10.

You need to prevent Server1 from using root hints if the forwarder is unavailable.

What command should you run?

To answer, select the appropriate options in the answer area

▼

Suspend-DnsServerZone  
Set-DnsServer  
Set-DnsServerForwarder  
Set-DnsServerRootHint

▼

-Name "\*" -PassThru  
-IPAddress 10.0.0.10  
-NameServer server2.contoso.com  
-UseRootHints. \$false

**Correct Answer:**

▼

Suspend-DnsServerZone  
Set-DnsServer  
Set-DnsServerForwarder  
Set-DnsServerRootHint

▼

-Name "\*" -PassThru  
-IPAddress 10.0.0.10  
-NameServer server2.contoso.com  
-UseRootHints. \$false

### QUESTION 9

In this section, you'll see one or more sets of questions with the same scenario and problem. Each question presents a unique solution to the problem, and you must determine whether the solution meets the stated goals. Any of the solutions might solve the problem. It is also possible that none of the solutions solve the problem.

Once you answer a question in this section, you will NOT be able to return to it. As a result, these questions will not appear in the review screen.

Note: This question is part of a series of questions that present the same scenario. Each question in the series contains a unique solution. Determine whether the solution meets the stated goals.

Your network contains an Active Directory domain named contoso.com. The domain contains a DNS server named Server1. All client computers run Windows 10.

On Server1, you have the following zone configuration.

ZoneName	ZoneType	IsAutoCreated	IsDnsIntegrated	IsReverseLookupZone	IsSigned
_msdcs.contoso.com	Primary	False	True	False	False
adatum.com	Forwarder	False	False	False	False
contoso.com	Primary	False	True	False	False
fabrikam.com	Primary	False	False	False	True
TrustAnchors	Primary	False	True	False	False

You have the following subnets defined on Server1.

Name	IPV4Subnet	IPV6Subnet
Subnet1	{10.0.0.0/24}	
Subnet2	{10.0.1.0/24}	
Subnet3	{192.168.15.0/24}	
Subnet4	{172.16.1.0/24}	

You need to prevent Server1 from resolving queries from DNS clients located on Subnet4. Server1 must resolve queries from all other DNS clients.

Solution: From a Group Policy object (GPO) in the domain, you modify the Network List Manager Policies.

Does this meet the goal?

- A. Yes
- B. No

**Correct Answer: B**

### QUESTION 10

Your company has 10 offices. Each office has a local network that contains several Hyper-V hosts that run Windows Server 2016. All of the offices are connected by high speed, low latency WAN links.

You need to ensure that you can use QoS policies for Live Migration traffic between the offices.

Which component should you install?



- A. the Multipath I/O feature
- B. the Routing role service
- C. the Network Controller server role
- D. the Canary Network Diagnostics feature
- E. the Data Center Bridging feature

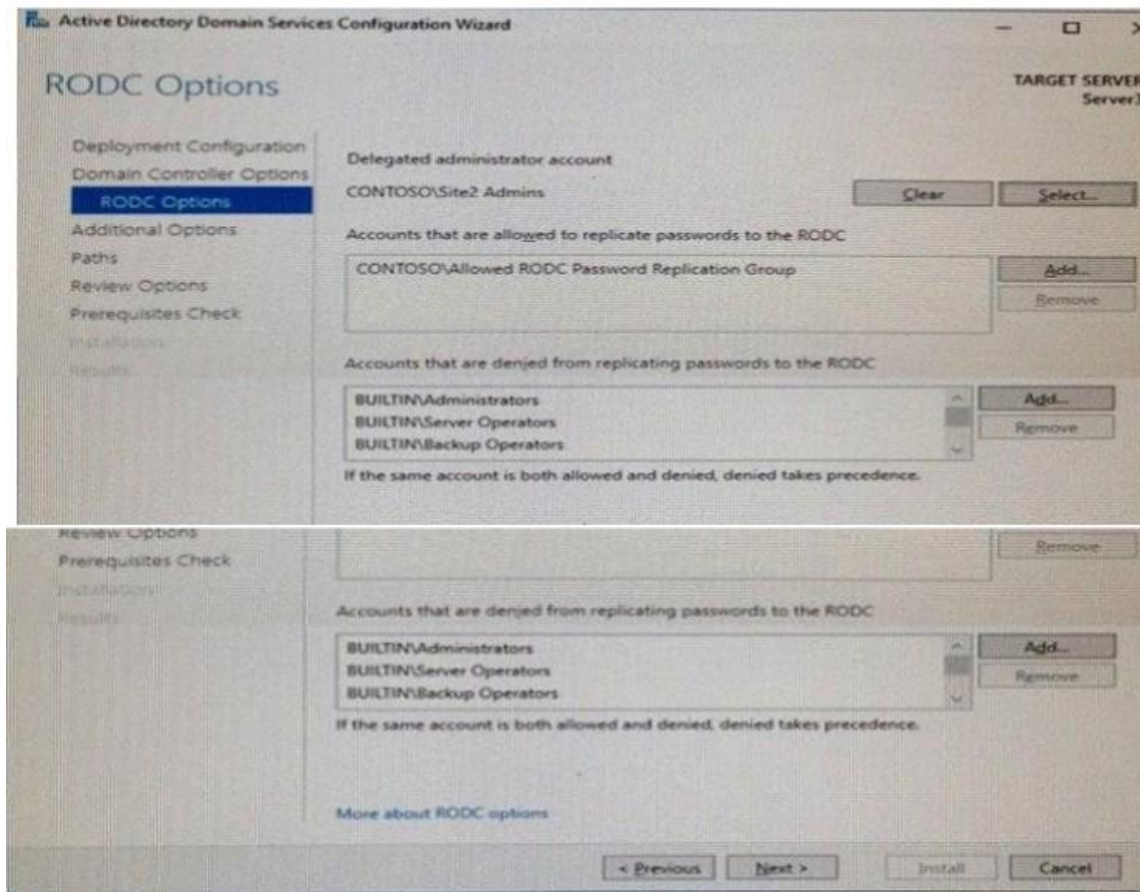
**Correct Answer:** CE

**QUESTION 11**

**HOTSPOT**

Your network contains an Active Directory forest. The forest contains two sites named Site1 and Site2. Site1 contains 10 domain controllers. Site1 and Site2 connect to each other by using a WAN link.

You run the Active Directory Domain Services Configuration Wizard as shown in the following graphic.



Server3 is the only server in Site2

Use the drop-down menus to select the answer choice that completes each statement based on the information graphic.

Members of the Site2 Admins group will be able to [answer choice] on Server 3.

make updates to SYSVOL content  
 manage the password replication policy  
 stop and start Active Directory Domain Services (AD DS)

If the WAN link fails, users who are members of the Allowed RODC Password Replication Group [answer choice] in Site2.

will be prevented from logging on  
 will log on with reduced security rights  
 can log on if they have previously logged on

**Correct Answer:**

Members of the Site2 Admins group will be able to [answer choice] on Server 3.

make updates to SYSVOL content  
 manage the password replication policy  
 stop and start Active Directory Domain Services (AD DS)

If the WAN link fails, users who are members of the Allowed RODC Password Replication Group [answer choice] in Site2.

will be prevented from logging on  
 will log on with reduced security rights  
 can log on if they have previously logged on