



Vendor: Microsoft

Exam Code: 70-337

**Exam Name: Enterprise Voice and Online Services with
Microsoft Lync Server 2013**

Version: Demo

QUESTION 1

You have an Active Directory domain named contoso.com. Your company has a Microsoft Office 365 subscription. Twenty users are enabled for Microsoft Lync Online. The users frequently travel. The users report that they receive the following error message when they attempt to sign in to Microsoft Lync from the office:

"Cannot sign in because the server is temporarily unavailable. If the problem continues, please contact your support team."

You verify that the users can sign in to Lync when they connect from the Internet. You need to ensure that all of the users can sign in to Lync. Which alias (CNAME) record should you create in the internal DNS domain?

To answer, select the appropriate record name and the appropriate record target in the answer area.

Hot Area:

Answer Area	
Record name	Target
<input type="text"/> Autodiscover.contoso.com Sip.contoso.com Lyncinternal.contoso.com Lyncexternal.contoso.com	<input type="text"/> Sipdir.online.lync.com Sipfed.online.lync.com Online.lync.com Contoso.onmicrosoft.com

Correct Answer:

Answer Area	
Record name	Target
<input type="text"/> Autodiscover.contoso.com Sip.contoso.com Lyncinternal.contoso.com Lyncexternal.contoso.com	<input type="text"/> Sipdir.online.lync.com Sipfed.online.lync.com Online.lync.com Contoso.onmicrosoft.com

QUESTION 2

Your network contains the servers shown in the following table. You configure the infrastructure to use hosted Exchange Unified Messaging (UM). You need to create a new contact object for the hosted UM auto attendant. What should you do?

- A. From Server1, run ocsumutil.exe.
- B. From Server3, run the exchucutil.ps1 script.
- C. From Server3, run the New-MailContact cmdlet.
- D. From Server1, run the New-CsExUmContact cmdlet.

Correct Answer: D

QUESTION 3

You purchase a Microsoft Office 365 subscription and configure the pilot users to use the @contoso.onmicrosoft.com UPN suffix. You need to ensure that the pilot users can perform the following actions:

- Join meetings.
- Use a SIP address that has the @online.contoso.com suffix.
- Communicate with users who are hosted on Lync Server 2013.

Which three tasks should you perform? (Each correct answer presents part of the solution. Choose three.)

- A. From the Lync Online Control Panel, set up federation to contoso.com.
- B. From the Lync Server Control Panel, set up federation to online.contoso.com.
- C. From the Lync Server Control Panel, set up federation to contoso.onmicrosoft.com.
- D. From the Lync Server Control Panel, update the user SIP addresses of the users to @online.contoso.com.
- E. From the Lync Online Control Panel, update the SIP addresses of the users to @online.contoso.com.

Correct Answer: ABE

QUESTION 4

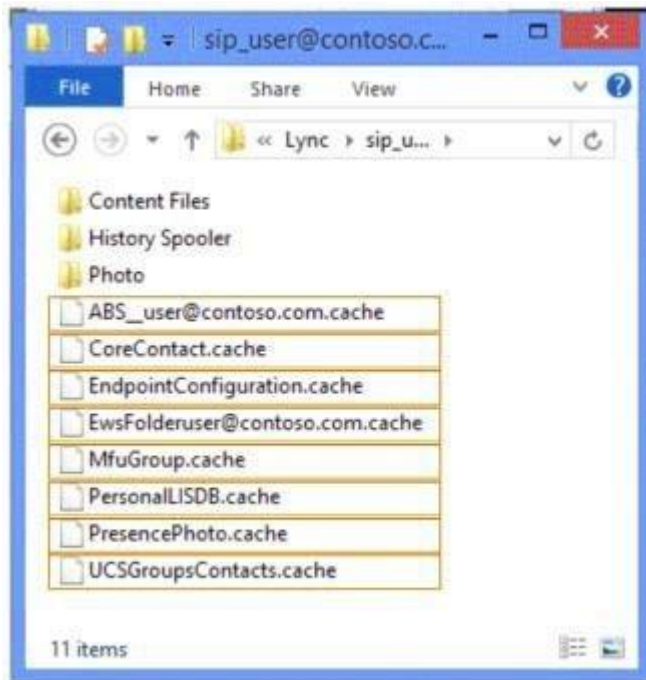
Your company has a Microsoft Office 365 subscription and uses Microsoft Lync Online. After a long network outage, some users reports that they cannot sign in to the Microsoft Lync client and they receive the following error message:

"Cannot sign in to Lync. You may have entered your sign-in address, user name, or password incorrectly, or the authentication service may be incompatible with this version of the program. If your sign-in information is correct and the problem persists, please contact your system administrator."

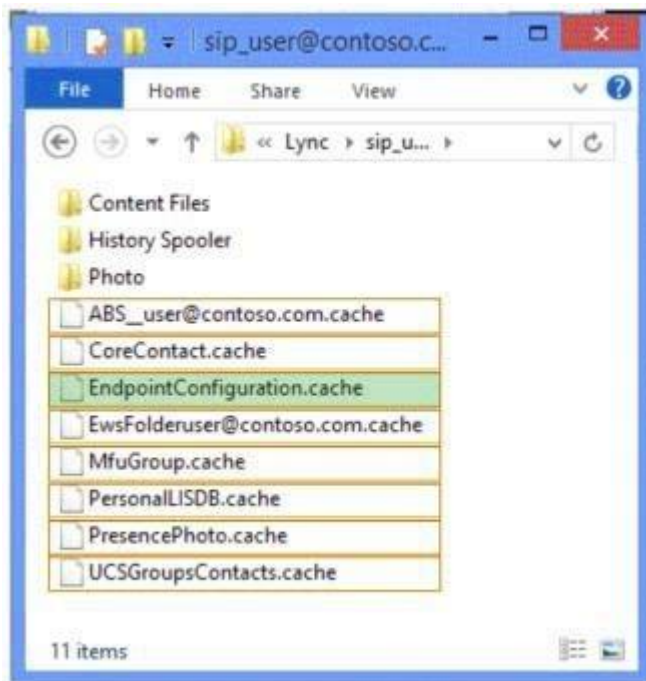
You confirm that other users can sign in successfully. You need to ensure that all of the users can sign in to Lync Online. Which file should you delete on the users' client computer?

To answer, select the appropriate file in the answer area.

Hot Area:



Correct Answer:



QUESTION 5

Your company has a Microsoft Office 365 subscription. The company uses Microsoft Lync Online. You need to ensure that Lync Online users can use dial-in conferencing. The solution must minimize costs. What should you do?

- A. Deploy an Edge Server and add a hosting provider to the server.
- B. Deploy an Edge Server and configure the A/V Edge service on the server.
- C. Deploy an A/V Conferencing pool.
- D. Set up an account with a third-party audio conferencing provider.

Correct Answer: D

QUESTION 6

You have a Lync Server 2013 infrastructure that contains four servers. The servers are configured as shown in the following table.

Server name	Role	Average CPU utilization
Server1	Front End Server	60 percent
Server2	Front End Server	60 percent
Server3	SQL Server Back End	50 percent
Server4	SQL Server Back End	50 percent

The Lync Server infrastructure contains a hardware load balancer name HLB1. The company has an IP-PBX. The IP-PBX supports media bypass. The IP PBX has a SIP trunk configured. Each user has a desktop phone that connects to the IP-PBX. Each laptop user has a Lync-certified headset. The company plans to implement Enterprise Voice and to use existing SIP trunks. You need to recommend a Mediation Server deployment that meets the following requirements:

- Remote users must be able to place calls to any desk phone if a single server fails.
- The degradation of call quality must be minimized during peak usage hours.

Which two solutions should you recommend? (Each correct answer presents a complete solution. Choose two.)

- A. Create a Mediation Server pool that contains HLB1.
- B. Install the Mediation Server role on Server1 and Server2.
- C. Install the Mediation Server role on Server3 and Server4.
- D. Create a Mediation Server pool that contains Server2 and Server4.
- E. Create a Mediation Server pool that contains two new servers.

Correct Answer: AB

QUESTION 7

You have a Lync Server 2013 infrastructure. A user named Executive1 has an assistant named Assistant1. Assistant1 is configured as a delegate and receives all of the calls for Executive 1. You need to modify the current voice solution to meet the following requirements:

- Ensure that some of the calls from other executives to Executive1 only ring on the Microsoft Lync 2013 client of Executive1.
- Ensure that Executive1 can receive the calls from the other executives when his presence status is set to Do Not Disturb.

What should you configure?

- A. A private line
- B. Call Park
- C. Simultaneous ring
- D. A response group

Correct Answer: A

QUESTION 8

You have a Lync Server 2013 infrastructure that contains a voice policy named Policy1. Policy1 contains local and national PSTN usages. You have a dial plan named DialPlan1. DialPlan1 is configured as shown in the following table.

Pattern	Translation rule
^\d{7}\$	+3120\$1
^0(6\d{8})\$	+31\$1
^0(((123457)\d{4,8} 88\d{7}))\$	+31\$1
^0?0([2-9]\d*)\$	+\$1

The Lync Server infrastructure contains four routes. The routes are configured as shown in the following table.

Route name	Pattern to match	PSTN usage	Trunk name
PBXUsers1	+\3120123	Local	LegacyPBX1
PBXUsers2	+\3188(?!(123))	Local	LegacyPBX2
National1	+\31(?!(88))	National	SIPTrunk1
National2	+31	National	SIPTrunk2

You create a test user who has the following configurations:

- Line URI: +31201234567
- Voice policy: Policy1
- Dial plan: DialPlan1

You need to identify which trunks will be used when the following numbers are dialed by the test user:

- 0881234567
- 0884567890

Which trunk should you identify for each number?

To answer, select the appropriate trunk for each number in the answer area.

Hot Area:

Answer Area	
0881234567	<input type="text"/> LegacyPBX1 LegacyPBX2 SIPTrunk1 SIPTrunk2
0884567890	<input type="text"/> LegacyPBX1 LegacyPBX2 SIPTrunk1 SIPTrunk2

Correct Answer:

Answer Area	
0881234567	<input type="text"/> LegacyPBX1 LegacyPBX2 SIPTrunk1 SIPTrunk2
0884567890	<input type="text"/> LegacyPBX1 LegacyPBX2 SIPTrunk1 SIPTrunk2

QUESTION 9

You need to identify which tasks can be performed by users who have the Response Group Administrator role and the Response Group Manager role. Which tasks should you identify?

To answer, select the appropriate tasks for each role in the answer area.

Hot Area:

	Response Group Administrator role	Response Group Manage role
Configure agents	<input type="checkbox"/>	<input type="checkbox"/>
Delete agent groups	<input type="checkbox"/>	<input type="checkbox"/>
Disable a Lync user	<input type="checkbox"/>	<input type="checkbox"/>
Create a response group	<input type="checkbox"/>	<input type="checkbox"/>
Modify the phone number of a response group	<input type="checkbox"/>	<input type="checkbox"/>
Modify the phone number of an agent	<input type="checkbox"/>	<input type="checkbox"/>

Correct Answer:

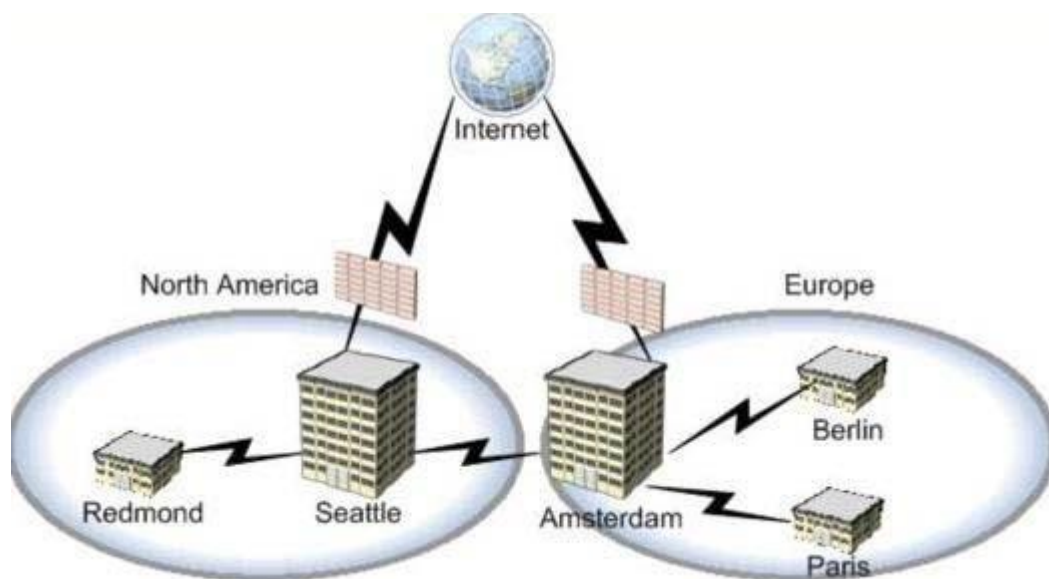
	Response Group Administrator role	Response Group Manage role
Configure agents	<input checked="" type="checkbox"/>	<input checked="" type="checkbox"/>
Delete agent groups	<input checked="" type="checkbox"/>	<input type="checkbox"/>
Disable a Lync user	<input type="checkbox"/>	<input type="checkbox"/>
Create a response group	<input checked="" type="checkbox"/>	<input type="checkbox"/>
Modify the phone number of a response group	<input checked="" type="checkbox"/>	<input checked="" type="checkbox"/>
Modify the phone number of an agent	<input type="checkbox"/>	<input type="checkbox"/>

QUESTION 10

Contoso, Ltd., has five offices. The offices are configured as shown in the exhibit. Each office has a local connection to the PSTN. The peak usage statistics are shown in the following table.

Office	Number of calls	Percentage of calls to North America	Percentage of calls to Europe
Redmond	10	50 percent	50 percent
Seattle	100	80 percent	20 percent
Amsterdam	50	20 percent	80 percent
Berlin	20	0 percent	100 percent
Paris	20	50 percent	50 percent

Every audio call consumes 100 kilobits per second (Kbps). You plan to replace the PSTN connection with a centralized SIP trunking service. The service will contain a SIP trunk in the Seattle office and a SIP trunk in the Amsterdam office. The solution will use least cost routing. You need to identify the maximum amount of bandwidth that will be used by each SIP trunk. What should you identify?



Select and Place:

The screenshot shows a configuration window with two main sections: 'Bandwidth' and 'Answer Area'. The 'Bandwidth' section on the left contains five yellow buttons with the following values: 8,500 Kbps, 9,500 Kbps, 10,000 Kbps, 10,500 Kbps, and 12,500 Kbps. The 'Answer Area' on the right contains two rows of configuration. The first row is labeled 'Amsterdam SIP trunk:' and has a blue button labeled 'Bandwidth'. The second row is labeled 'Seattle SIP trunk:' and also has a blue button labeled 'Bandwidth'.

Correct Answer:

This screenshot shows the same configuration window as above, but with the correct bandwidth values selected. In the 'Answer Area', the 'Amsterdam SIP trunk:' row now has a yellow button with '9,500 Kbps' selected, and the 'Seattle SIP trunk:' row has a yellow button with '10,500 Kbps' selected. The 'Bandwidth' section on the left remains the same.

QUESTION 11

You have a Lync Server 2013 infrastructure and a Microsoft Exchange Server 2013 organization. You enable Enterprise Voice for all users. You plan to implement Unified Messaging (UM). You need to configure a dial plan to ensure that all communication between Exchange Server 2013 and Lync Server 2013 is encrypted. How should you configure the URI type and the VoIP security in the dial plan?

To answer, select the appropriate URI type and the VoIP security in the answer area.

Hot Area:

Answer Area

URI type:

- E.164
- SIP URI
- Telephone extension

VoIP security:

- Secured
- SIP Secured
- Unsecured

Correct Answer:

Answer Area

URI type:

- E.164
- SIP URI
- Telephone extension

VoIP security:

- Secured
- SIP Secured
- Unsecured

QUESTION 12

You have a Lync Server 2013 infrastructure. Your network contains a single site. The site contains a Standard Edition server and multiple network segments. Each segment is associated to a different subnet. Some of the network segments are wireless and some are wired. You enable Enterprise voice and deploy a Lync Server 2013 media gateway. You configure media bypass. You set media bypass to Always bypass. Call Admission Control (CAC) is disabled. Users on the wireless network report poor audio quality during calls to external phone numbers. The users report good audio quality during calls to other Lync Server 2013 users. You need to recommend changes to the infrastructure to improve the audio quality of calls for the wireless network users. Which three actions should you recommend? (Each correct answer presents part of the solution.)

- A. From the Microsoft Lync Server 2013 Control Panel, select Use sites and region configuration.
- B. Associate the wireless subnets to the new site.
- C. From the Microsoft Lync Server 2013 Control Panel, select Enable bypass for non-mapped sites.
- D. Create a new network site.
- E. From the Microsoft Lync Server 2013 Control Panel, select Enable call admission control.
- F. Associate the wired subnets to the new site.

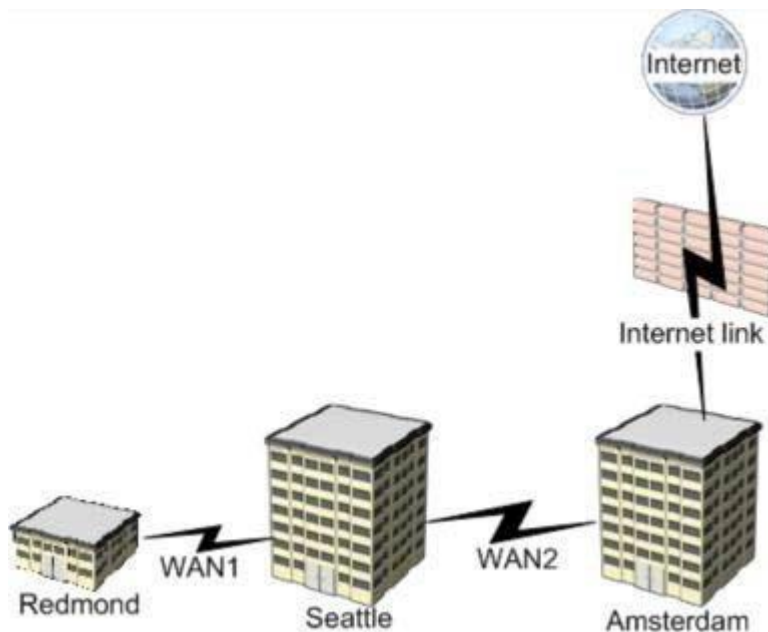
Correct Answer: ABD

QUESTION 13

Your company has three offices. The network is configured as shown in the exhibit. You have a Lync Server 2013 infrastructure. All of the Lync Server components are located in the Amsterdam office. You need to identify how much bandwidth will be used on each link during a conference call. The conference call will contain the attendees shown in the following table.

Attendee location	Number of attendees
Seattle	50
Redmond	10
Amsterdam	100
Internet (Remote)	20

Each audio call consumes 100 kilobits per second (Kbps). How much bandwidth should you identify for each link? To answer, drag the appropriate bandwidth amounts to the correct links in the answer area. Each bandwidth amount may be used once, more than once, or not at all. Additionally, you may need to drag the split bar between panes or scroll to view content.



Select and Place:

Bandwidths	Answer Area
1,000 Kbps	WAN1: Bandwidth
2,000 Kbps	WAN2: Bandwidth
5,000 Kbps	Internet link: Bandwidth
6,000 Kbps	
10,000 Kbps	
15,000 Kbps	

Correct Answer:

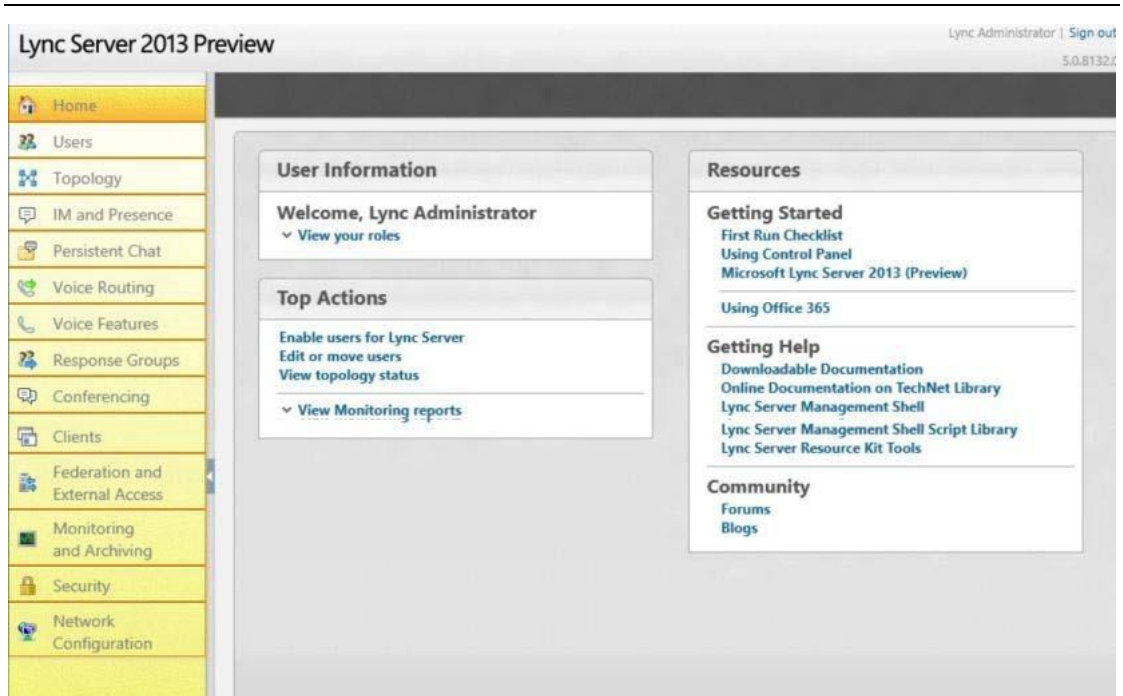
Bandwidths	Answer Area
	WAN1: 1,000 Kbps
	WAN2: 6,000 Kbps
5,000 Kbps	Internet link: 2,000 Kbps
10,000 Kbps	
15,000 Kbps	

QUESTION 14

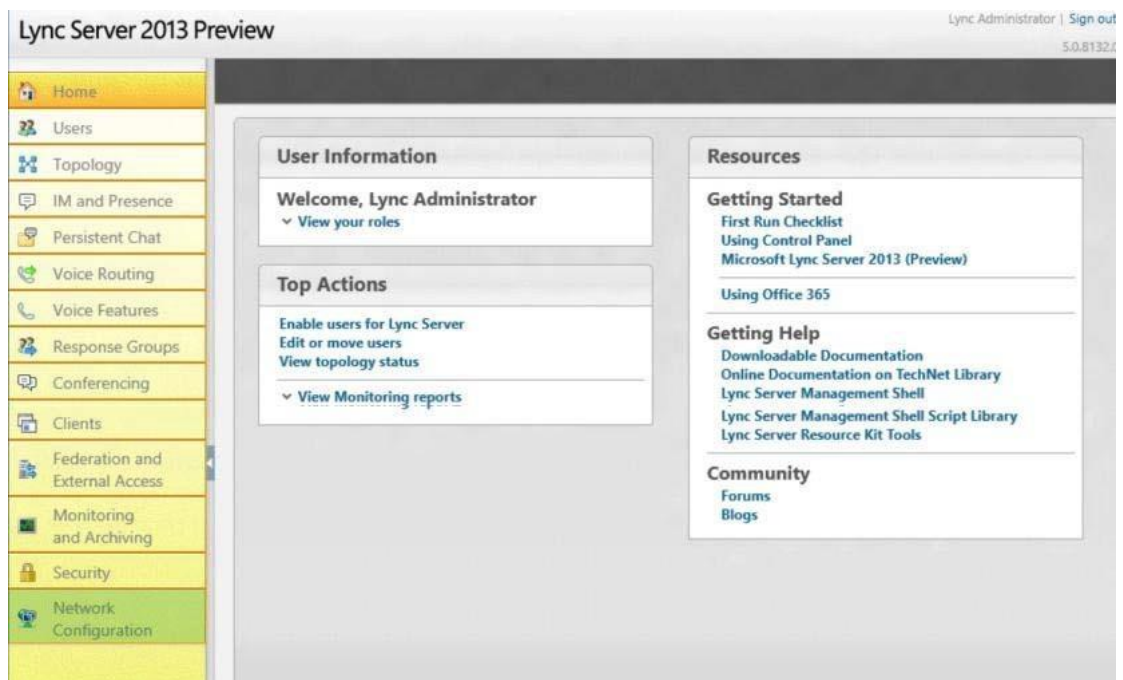
You have a Lync Server 2013 infrastructure that has conferencing and Enterprise Voice. You plan to optimize the traffic on the network for Enterprise Voice. You add information about the network sites and the network subnets. You need to enable media bypass for several of the network sites. Which node should you use from the Microsoft Lync Server 2013 Control Panel?

To answer, select the appropriate node in the answer area.

Hot Area:



Correct Answer:



QUESTION 15

Your company has two offices. One office is located in New York. The other office is located in Seattle. Each office has a media gateway that supports media bypass. Media bypass is enabled. The offices contain five subnets. The subnets are configured as shown in the following table.

Office	Floor	Subnet	Subnet mask
New York	First	172.16.1.0	255.255.255.0
New York	Second	172.16.2.0	255.255.255.0
New York	Third	172.16.3.0	255.255.255.0
Seattle	First	172.16.4.0	255.255.255.0
Seattle	Second	172.16.5.0	255.255.255.0

You have a Lync Server 2013 infrastructure. All client computers have Microsoft Lync 2013 deployed. Monitoring reports show that the client computers are not using media bypass. You run the Get-CsNetworkSubnet cmdlet and you receive the following result:

Identity: 172.16.0.0
 MaskBits: 22
 Description: New York
 NetworkSiteID: New York
 SubnetID: 172.16.0.0

Identity: 172.16.4.0
 MaskBits: 23
 Description: Seattle
 NetworkSiteID: Seattle
 SubnetID: 172.16.4.0

You need to ensure that all of the client computers use media bypass. What should you do?

- A. Delete the existing subnets. Create a single subnet entry for North America that uses a 16-bit mask.
- B. Configure the subnet in the New York office and the subnet in the Seattle office to use a 24-bit mask.
- C. Delete the existing subnets. Create five subnet entries that each uses a 24-bit mask.
- D. Delete the existing subnets. Create five subnet entries that each uses a 16-bit mask.

Correct Answer: C

QUESTION 16

You are planning a Lync Server 2013 Edge Server deployment. A network administrator gives you nine public IP addresses for the planned deployment. You need to recommend an Edge Server deployment that meets the following requirements:

- Remote users must be able to access conferences.
- A different public IP address must be assigned to each Edge service.
- Users must be able to sign in from a Microsoft Lync mobile client.
- Users must be able to communicate with partners who are enabled for XMPP.
- Remote users must be able to access the Lync Server infrastructure if an Edge Server fails.

What should you include in the recommendation?

- A. Two Edge Servers that use DNS load balancing
- B. Three Edge Servers that use DNS load balancing
- C. Three Edge Servers that use hardware load balancing
- D. Two Edge Servers that use hardware load balancing

Correct Answer: A

QUESTION 17

You have a server named Lync1 that has Lync Server 2013 Standard Edition deployed. Lync1 has Web Conferencing enabled. All client computers have Microsoft Lync 2013 deployed. The network supports Differentiated Services (DiffServ). The company plans to implement Quality of Service (QoS) for all Lync Server audio traffic. You need to identify which tasks must be performed to configure QoS. Which three tasks should you identify? (Each correct answer presents part of the solution. Choose three.)

- A. Configure Lync 2013 to use a specific port range for audio.
- B. Configure a QoS policy to use a specific port range for audio.
- C. Create a voice policy and a location policy.
- D. Set the Differentiated Services Code Point (DSCP) values used for audio as a priority.
- E. Configure Call Admission Control (CAC) for all subnets that contain Lync 2013 clients.

Correct Answer: ABD

QUESTION 18

Your network contains four servers. The servers are configured as shown in the following table.

Server name	Software	Role
Server1	Lync Server 2013	Front End Server
Server2	Lync Server 2013	Edge Server
Server3	Microsoft Exchange Server 2010 Service Pack 2 (SP2)	Edge Transport Server
Server4	Microsoft Exchange Server 2010 Service Pack 2 (SP2)	Mailbox server Client Access server Hub Transport server Unified Messaging server

You need to configure backend integration between Lync Server 2013 and Exchange Server 2010 Unified Messaging (UM). You create a dial plan and an auto attendant in the Exchange Server organization. What should you do next?

- A. On Server1, run ocsumutil.exe.
- B. On Server2, run ocsumutil.exe.
- C. On Server3, run exchucutil.ps1.
- D. On Server4, run exchucutil.ps1.

Correct Answer: D

QUESTION 19

You have a Lync Server 2013 infrastructure that has Enterprise Voice enabled. When a caller dials an unassigned number, the caller hears a custom message, and then the caller is forwarded to a user named User1. Several months later, User1 leaves the company. You need to ensure that when a caller dials an unassigned number, the caller hears the custom message and is forwarded to a user named User2. Which cmdlet should you run?

- A. Set-CsUnassignedNumber
- B. Set-CsAnnouncement
- C. Set-CsUser
- D. Set- CsVoice Route

Correct Answer: B

QUESTION 20

Users frequently travel between the offices. The company plans to deploy Lync Server 2013 and Enterprise Voice. A pool will be deployed to each office. You need to ensure that if a user dials 911 from any of the offices, the call is routed to the local emergency services provider for that office. What should you do?

- A. From the Lync Server 2013, Topology Builder, create a central site for each office. Deploy one pool to each site. From the Microsoft Lync Server 2013 Control Panel, create a location policy for each location.
- B. From the Lync Server 2013, Topology Builder, create one central site. Deploy all pools to the central site. From the Microsoft Lync Server 2013 Control Panel, create a single location policy.
- C. From the Lync Server 2013, Topology Builder, create a central site for each office. Deploy one pool to each site. From the Microsoft Lync Server 2013 Control Panel, create a user-level location policy for each location. Assign the respective user-level location policy to the users in each office.
- D. From the Lync Server 2013, Topology Builder, create one central site. Deploy all pools to the central site. From the Microsoft Lync Server 2013 Control Panel, modify the global location policy.

Correct Answer: A

EnsurePass.com Members Features:

1. Verified Answers researched by industry experts.
2. Q&As are downloadable in PDF and VCE format.
3. 98% success Guarantee and **Money Back** Guarantee.
4. Free updates for **180** Days.
5. **Instant Access to download the Items**

View list of All Exam provided:

<http://www.ensurepass.com/certifications?index=A>

To purchase Lifetime Full Access Membership click here:

<http://www.ensurepass.com/user/register>

Valid Discount Code for 2015: JREH-G1A8-XHC6

To purchase the HOT Microsoft Exams:

<u>Microsoft</u>			
70-243	70-347	70-466	70-515
70-246	70-410	70-467	70-516
70-247	70-411	70-480	70-519
70-321	70-412	70-483	70-583
70-331	70-413	70-484	70-640
70-332	70-414	70-485	70-649
70-336	70-417	70-486	70-668
70-337	70-461	70-487	70-680
70-341	70-462	70-488	70-687
70-342	70-463	70-489	70-688
70-346	70-464	70-513	70-689



Microsoft



CISCO

ORACLE

CompTIA

CITRIX

