



Vendor: Microsoft

Exam Code: 70-247

**Exam Name: Configuring and Deploying a Private Cloud with
System
Center 2012**

Version: Demo

Topic 1, Contoso, Ltd

Overview

Contoso, Ltd. is a manufacturing company.

Contoso has a main office and six branch offices. The main office is located in Toronto. The branch offices are located in New York, Seattle, Miami, Montreal, Los Angeles, and Vancouver.

Existing Environment

Active Directory Environment

The network contains an Active Directory forest named contoso.com. The forest contains a child domain for each office.

Active Directory currently contains 7,500 user accounts and 15,000 computer accounts.

Network Infrastructure

All servers are located in a data center in Toronto. The data center contains multiple subnets that are separated by firewalls.

The Toronto data center contains a cluster that runs Microsoft SQL Server 2008 Enterprise Service Pack 1 (SP1).

Four servers are unused and are being considered as potential Hyper-V hosts. The servers are configured as shown in the following table.

Server name	Baseboard Management Controller (BMC)	Operating system
Server1	Installed	Windows Server 2012
Server2	Not installed	None
Server3	Installed	None
Server4	Installed	Windows Server 2008 R2

All of the servers being considered as potential Hyper-V hosts have both locally attached storage and access to a SAN.

Help Desk Environment

Contoso uses a help desk ticketing system that was developed in-house. Fifty help desk agents have access to the ticketing system.

The ticketing system currently tracks:

- An average of two new incidents per month, per client computer
- An average of 2,000 change requests per month

Disaster Recovery Environment

Contoso uses a third-party backup solution. Backups are scheduled for the servers in the Seattle office as follows:

- The daily incremental backups total 10 GB.
- The total size of data to back up is 100 GB.
- Backed up data is retained for 10 business days.

Problem Statements

The original developers of the help desk ticketing system are no longer employed by Contoso and maintenance of the system is becoming an issue.

Requirements

Planned Changes

Contoso plans to move the IT infrastructure to a private cloud. Whenever possible, hardware and software costs must be minimized. Contoso plans to open a small office in Beijing. System Center 2012 App Controller will be used to manage applications. The display names of the applications will be in Simplified Chinese Pinyin IME.

New physical servers will be deployed by using System Center 2012 Configuration Manager from a server named Server5. Server5 will also be a PXE service point. The current backup solution will be replaced with System Center 2012 Data Protection Manager (DPM).

A public key infrastructure (PKI) will be deployed to issue and manage certificates. The PKI deployment must be made as secure as possible.

Hardware load balancers will be deployed for use in the deployment of private cloud services.

Cloud Requirements

Contoso plans to implement a cloud solution that meets the following requirements:

- Stores all virtual machines on the SAN only.
- Uses SAN copy to provision the virtual machines.
- Provides the ability to manage the resolution of incidents.
- Contains managed virtual machines across both private and public clouds.
- Provides the ability to customize the settings of management packs provided by Microsoft.
- Collects security events from all of the servers running in the private cloud and provides centralized reporting on the events.

App1 Requirements

A new application named App1 will be deployed to the private cloud. App1 is a three-tier application that contains the following components:

- A front-end tier that runs a web server. The tier must be highly available and capable of being quickly scaled out if required.
- A middle tier that runs an application server.
- A back-end tier that runs a database.

App2 Requirements

An application named App2 will be deployed to the public cloud. Users will be authenticated by using the on-premises Active Directory. The users must be able to access App2 without being prompted for authentication again.

QUESTION 1

You need to recommend a deployment topology for the PKI. The deployment topology must meet the cloud requirements. What should you recommend? (More than one answer choice may achieve the goal. Select the BEST answer.)

- A. An online enterprise root certification authority (CA) only
- B. An online standalone root certification authority (CA) only
- C. An offline root certification authority (CA) and an online enterprise subordinate CA
- D. An offline root certification authority (CA) and an online standalone subordinate CA

Correct Answer: C

QUESTION 2

You need to recommend a solution for the management packs. The solution must meet the cloud requirements. What should you recommend? (More than one answer choice may achieve the goal. Select the BEST answer.)

- A. Export the management packs, and then modify the settings of the management packs. Seal the management packs, and then import the management packs.
- B. Export the management packs, modify the settings of the management packs, and then import the unsealed management packs.
- C. Unseal the management packs, and then modify the settings of the management packs.
- D. Create a new management pack that contains overrides.

Correct Answer: B

QUESTION 3

You need to recommend a solution to meet the requirements for App2. What should you include in the recommendation?

- A. Active Directory Rights Management Services (AD RMS)
- B. Active Directory Federation Services (AD FS)
- C. Windows Azure Active Directory Rights Management Services
- D. Microsoft Forefront Identity Manager (FIM) 2010 R2

Correct Answer: B

QUESTION 4

You need to recommend the configuration settings for the SQL Server instance that will host the App Controller database. The solution must support the planned changes. What should you include in the recommendation?

- A. Change the database collation.
- B. Enable case sensitivity.
- C. Disable full-text search.
- D. Install the SQL Server Reporting Services (SSRS).

Correct Answer: A

Explanation:

To support Simplified Chinese change MS SQL Collation <http://msdn.microsoft.com/en->

us/library/ms144250(v=sql.105).aspx

QUESTION 5

You need to identify which components must be created to meet the App1 deployment requirements. Which components should you identify?

- A. A service template and a service request template
- B. A guest operating system profile and a virtual IP (VIP) template
- C. A guest operating system profile and a service request template
- D. A service template and a virtual IP (VIP) template

Correct Answer: C

QUESTION 6

You need to identify what you require from the vendor of the hardware load balancer to support the planned changes. What should you identify?

- A. A driver
- B. A provider
- C. A Management Information Base (MIB)
- D. A management tool

Correct Answer: B

QUESTION 7

You need to recommend a solution to meet the technical requirements for the web tier of Appl. What should you include in the recommendation? (More than one answer choice may achieve the goal. Select the BEST answer.)

- A. Network Load Balancing (NLB)
- B. Failover Clustering
- C. Multipath I/O (MPIO)
- D. DNS round robin

Correct Answer: A

Explanation:

Network Load Balancing (NLB) provides scalability and at the same time helps increase availability of Web-based services <http://technet.microsoft.com/en-us/library/cc725946.aspx>

QUESTION 8

You need to identify which UDP port or ports must be opened on any of the firewalls between Server5 and all of the subnets in the data center. The solution must minimize the number of ports opened on the firewall. Which port or ports should you identify? (Each correct answer presents part of the solution. Choose all that apply.)

- A. 67
- B. 69
- C. 389
- D. 3389

- E. 4010
- F. 4011

Correct Answer: ABF

Explanation:

Ports required by Configuration Manager: 67 and 68, 69, 4011

<http://technet.microsoft.com/en-us/library/bb632618.aspx>

Dynamic Host Configuration Protocol (DHCP): 67 and 68

Trivial File Transfer Protocol (TFTP) : 69

Boot Information Negotiation Layer (BINL): 4011

QUESTION 9

You need to identify which server or servers can be deployed as a Hyper-V host by using System Center 2012 -Virtual Machine Manager (VMM). Which server or servers should you identify? (Each correct answer presents part of the solution. Choose all that apply.)

- A. Server1
- B. Server2
- C. Server3
- D. Server4

Correct Answer: ACD

Explanation:

To support discovery, the physical computer must have a baseboard management controller (BMC) installed that enables out-of-band management.

From scenario:

Server name	Baseboard Management Controller (BMC)	Operating system
Server1	Installed	Windows Server 2012
Server2	Not installed	None
Server3	Installed	None
Server4	Installed	Windows Server 2008 R2

QUESTION 10

You need to identify which Microsoft SharePoint product or products support the planned deployment of the System Center 2012 Service Manager Self-Service Portal. Which product or products should you identify? (Each correct answer presents a complete solution. Choose all that apply.)

- A. SharePoint 2010 for Internet Sites Enterprise
- B. SharePoint Foundation 2010
- C. SharePoint Server 2010
- D. SharePoint Server 2013

Correct Answer: ABC

Explanation:

One of the following versions of Microsoft SharePoint:
Microsoft SharePoint Foundation 2010

Microsoft SharePoint Server 2010

Microsoft SharePoint 2010 for Internet Sites Enterprise SharePoint 2013 is not supported on the server hosting the SharePoint Web Parts.

<http://technet.microsoft.com/en-us/library/hh519608.aspx>

<http://www.server-log.com/blog/2011/12/29/scsm-2012how-to-install-the-self-service-portal.html>

QUESTION 11

DRAG DROP

You need to configure the storage fabric to support the deployment of the virtual machines. The solution must meet the cloud requirements. Which three actions should you perform in sequence? (To answer, move the appropriate three actions from the list of actions to the answer area and arrange them in the correct order.)

Actions	Answer Area
Assign the storage to hosts and clusters.	
Configure the iSCSI initiator.	
Allocate storage to a host group.	
Install the Microsoft iSCSI Software Target.	
Run the Add Storage Devices Wizard.	

Correct Answer:

Actions	Answer Area
Assign the storage to hosts and clusters.	Configure the iSCSI initiator.
Configure the iSCSI initiator.	
Allocate storage to a host group.	Run the Add Storage Devices Wizard.
Install the Microsoft iSCSI Software Target.	Allocate storage to a host group.
Run the Add Storage Devices Wizard.	

QUESTION 12

DRAG DROP

You need to identify which System Center 2012 components are required to meet the cloud requirements. Which components should you identify? (To answer, drag the appropriate components to the correct requirements. Each component may be used once, more than once, or not at all. You may need to drag the split bar between panes or scroll to view content.)

Components	Answer Area	
App Controller	Requirement	Component
Configuration Manager	Manages the resolution of incidents and issues.	Component
Data Protection Manager	Deploys and manages virtual machines across both the private and public clouds.	Component
Endpoint Protection	Collects security events from all of the servers running in the private cloud and provides centralized reporting on the events.	Component
Operations Manager		
Service Manager		

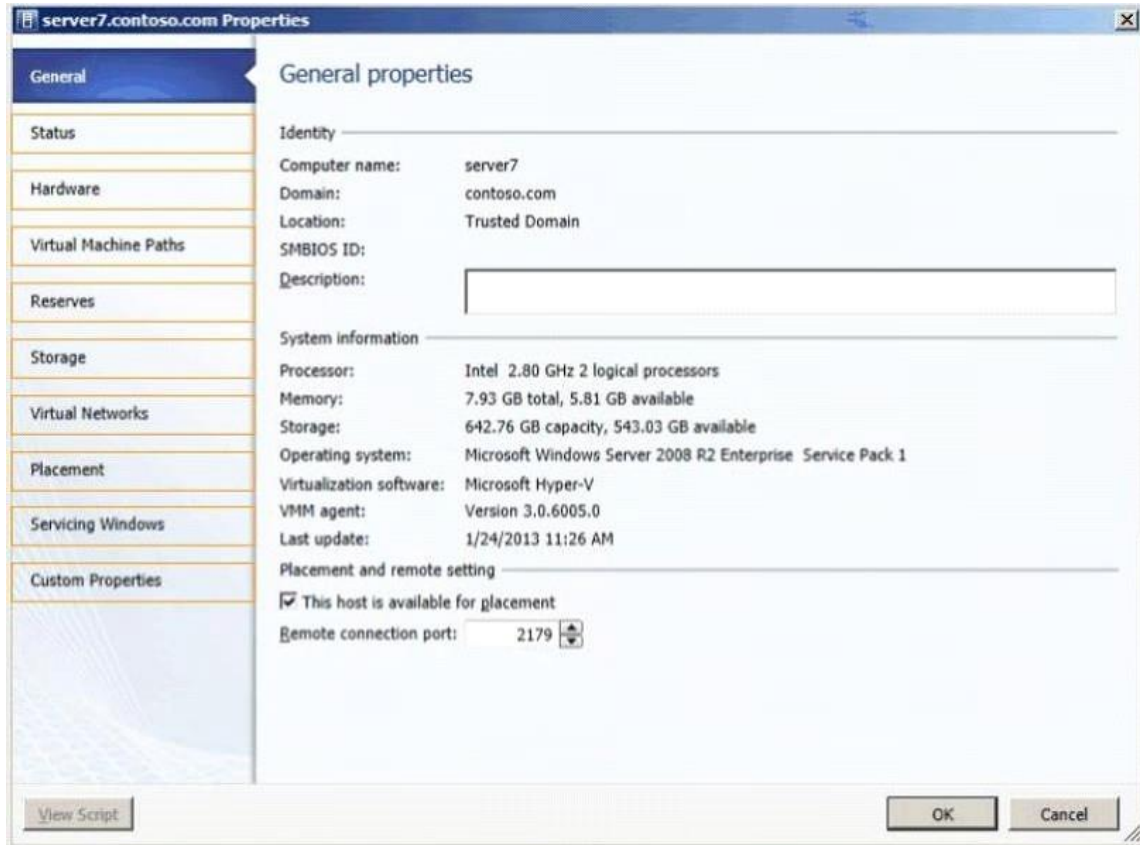
Correct Answer:

Components	Answer Area	
App Controller	Requirement	Component
Configuration Manager	Manages the resolution of incidents and issues.	Service Manager
Data Protection Manager	Deploys and manages virtual machines across both the private and public clouds.	App Controller
Endpoint Protection	Collects security events from all of the servers running in the private cloud and provides centralized reporting on the events.	Operations Manager
Operations Manager		
Service Manager		

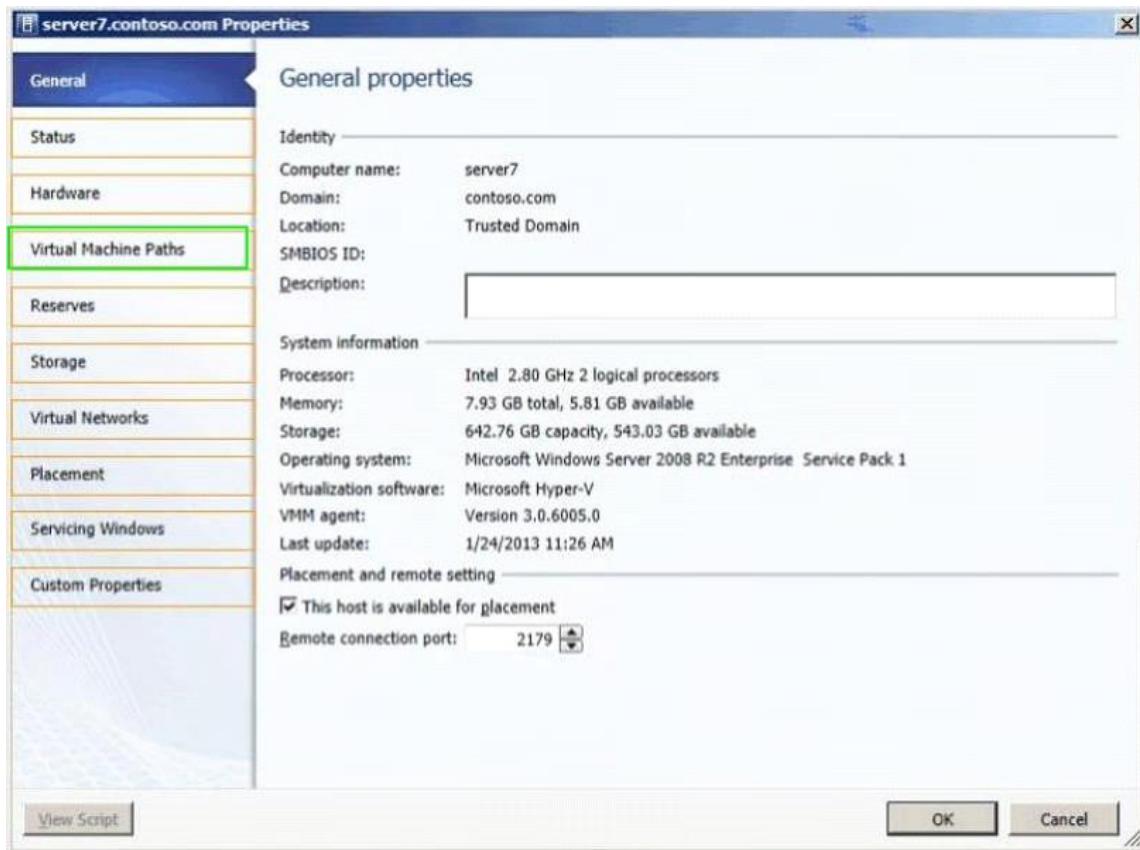
QUESTION 13

HOTSPOT

You need to configure the Hyper-V hosts to meet the cloud requirements. From which node should you perform the configuration? (To answer, select the appropriate node in the answer area.)



Correct Answer:



Topic 2, Northwind Traders

Overview

Northwind Traders is a retail company that has three offices. The offices are located in New York, Montreal, and Miami.

In the data center of the New York office, the company plans to implement a private cloud solution that will use System Center 2012 R2.

Existing Environment

Network Infrastructure

The network contains two Active Directory forests named northwindtraders.com and contoso.com.

The northwindtraders.com forest contains servers that run either Windows Server 2012 R2 or Windows Server 2012. The northwindtraders.com forest contains all of the computers in the New York office and the Montreal office.

The contoso.com forest contains all of the computers in the Miami office. A trust relationship does not exist between the forests.

Server Environment

The data center of the Montreal office contains three servers. The servers are configured as shown in the following table.

Server name	Role	Software
WFE01	Front-end web server	Microsoft SharePoint Server 2010
APP01	Application server	Microsoft SharePoint Server 2010
SQL01	Database server	Microsoft SQL Server 2012 R2

The data center of the New York office contains seven servers. The servers are configured as shown in the following table.

Server name	Role
SCVMM01	System Center 2012 Virtual Machine Manager (VMM) server
SCSM01	System Center 2012 Service Manager server
SCO01	System Center 2012 Orchestrator server
SQL02	Database server that has SQL Server 2012 installed
WEB01	Web server
ST01	iSCSI Target Server
ST02	SMB3 file server

Service Pack 1 (SP1) for System Center 2012 is deployed to all of the System Center servers. All of the System Center servers run Windows Server 2012.

Currently, VMM is used to deploy virtual machines to Hyper-V hosts.

Implementation Plans

Planned Upgrades

Northwind Traders plans to upgrade all physical servers to Windows Server 2012 R2 and all System Center 2012 components to System Center 2012 R2. Administrators also plan to add all of the System Center 2012 R2 components that are NOT deployed already.

Planned Development

Northwind Traders plans to deploy seven new servers to the New York data center. The servers will be configured as shown in the following table.

Server name	Role
SCOM01	Operations Manager server
DPM01	Data Protection Manager (DPM) server that will use SQL05 as a database server and a report server
SCAPP01	App Controller server
SCCM01	Configuration Manager server
SQL03	SQL Server 2012 SP1 server that has the Database Engine, SQL Server Integration Services (SSIS), and SQL Server Reporting Services (SSRS) installed
SQL04	SQL Server 2012 SP1 server that has the Database Engine, SQL Server Analysis Services (SSAS), and SQL Server Integration Services (SSIS) installed
SQL05	SQL Server 2012 SP1 server that has the Database Engine and SQL Server Reporting Services (SSRS) installed

All of the SQL Server servers will use the default instances.

Northwind Traders plans to move all of the virtual machines on the Hyper-V hosts to four new private clouds named IT, Sales, Finance, and Corporate. The Hyper-V hosts in the IT private cloud will have their network adapters configured by using logical switches.

After the planned implementation of System Center 2012 R2, the administrators plan to deploy the Service Manager Self-Service Portal.

The administrators also plan to integrate System Center and Windows Azure.

The company's developers recently developed an order management application that contains a web application and a Windows service. The Windows service accesses a database. You use Server Application Virtualization (Server App-V) packages to deploy the web application and the Windows service. You use a SQL Server dedicated administrator connection (DAC) package to deploy the database.

Requirements

General Requirements

Northwind Traders plans to:

- Reuse existing servers whenever possible.
- Minimize the development of custom code.
- Minimize the numbers of components for any solution.
- Minimize the amount of permissions assigned to users.
- Minimize the amount of administrative effort whenever possible.

System Center Requirements

Northwind Traders must meet the following requirements:

- VMM must be able to use the storage on ST01 and ST02.
- Users must be able to access the Service Manager Self-Service Portal.
- The servers in the Miami office must be monitored by using Operations Manager.
- The order management application must be deployed by using a service template.
- Users of the Corporate private cloud must be able to copy their virtual machines to Windows Azure.
- The Service Manager Self-Service Portal and the SharePoint Server 2010 infrastructure must be integrated.
- The NIC teaming mode for network adapters must be the same on all of the Hyper-V hosts in the IT private cloud.
- The operational database and the data warehouse database used by Operations Manager must be on separate servers.
- Each virtual machine created in the Sales private cloud must be limited to four virtual CPUs and eight GB of memory.
- The data collected from all of the monitored servers must reside in the same database in the northwindtraders.com forest.

QUESTION 14

You need to ensure that you can upgrade VMM on SCVMM01. Which three actions should you perform? Each correct answer presents part of the solution.

- A. Install Windows Server 2012 R2.

- B. Upgrade Microsoft .NET Framework
- C. Uninstall the VMM management server.
- D. Uninstall the Virtual Machine Manager console.
- E. Upgrade Windows Assessment and Deployment Kit (Windows ADK).

Correct Answer: CDE

QUESTION 15

You need to recommend network fabric configurations for the planned deployment of VMM. What should you include in the recommendation?

- A. A virtual switch extension manager
- B. A Hyper-V port profile for virtual network adapters
- C. A port classification
- D. A Hyper-V port profile for uplinks

Correct Answer: B

Explanation:

Note:

The Hyper-V hosts in the IT private cloud will have their network adapters configured by using logical switches.

In Virtual Machine Manager (VMM) in System Center 2012 Service Pack 1 (SP1) or System Center 2012 R2, you can consistently configure identical capabilities for network adapters across multiple hosts by using port profiles and logical switches. Port profiles and logical switches act as containers for the properties or capabilities that you want your network adapters to have. Instead of configuring individual properties or capabilities for each network adapter, you can specify the capabilities in port profiles and logical switches, which you can then apply to the appropriate adapters.

Ref: <http://technet.microsoft.com/en-us/library/jj721570.aspx>

QUESTION 16

DRAG DROP

After the planned implementation of System Center 2012 R2, you need to configure the integration with Windows Azure. What should you do? To answer, drag the appropriate actions to the correct components. Each action may be used once, more than once, or not at all. You may need to drag the split bar between panes or scroll to view content.

Actions	Answer Area
Add a subscription.	App Controller portal: <input type="text" value="Action"/>
Add a service template.	Virtual Machine Manager console: <input type="text" value="Action"/>
Configure a virtual machine path.	
Configure a stored virtual machine path.	

Correct Answer:

Actions	Answer Area
Add a subscription.	App Controller portal: Add a subscription.
Add a service template.	Virtual Machine Manager console: Configure a stored virtual machine path.
Configure a virtual machine path.	
Configure a stored virtual machine path.	

QUESTION 17

DRAG DROP

You create a service template for the order management application. You need to configure the compatibility settings for the application profiles used in the virtual machine templates. Which compatibility setting should you use for each application profile? To answer, drag the appropriate compatibility settings to the correct application profiles. Each compatibility setting may be used once, more than once, or not at all. You may need to drag the split bar between panes or scroll to view content.

Compatibility settings	Answer Area
General	Web application: Compatibility setting
SQL Server Application Host	Windows service: Compatibility setting
Web Application Host	

Correct Answer:

Compatibility settings	Answer Area
General	Web application: General
SQL Server Application Host	Windows service: General
Web Application Host	

QUESTION 18

You need to recommend which type of profile should be assigned to the Sales private cloud. What should you recommend?

- A. Physical Computer
- B. Capability
- C. Hardware
- D. Guest OS

Correct Answer: C

Explanation:

Each virtual machine created in the Sales private cloud must be limited to four virtual CPUs and eight GB of memory.

QUESTION 19

DRAG DROP

You are planning the deployment of Operations Manager. Operations Manager will be deployed before DPM. You plan to put the operational database on SQL03. You need to identify which SQL Server servers must be used for the Operations Manager deployment. Which server should host each database component for the Operations Manager deployment? To answer, drag the appropriate servers to the correct components. Each server may be used once, more than once, or not at all. You may need to drag the split bar between panes or scroll to view content.

Correct Answer:

QUESTION 20

You need to configure VMM to meet the storage requirements after the planned upgrade of VMM to System Center 2012 R2. What should you add?

- A. Storage providers and storage devices
- B. Logical units and logical switches
- C. Storage providers and logical units
- D. Logical switches and virtual hard disks (VHDs)

Correct Answer: C

QUESTION 21

You need to recommend a solution for monitoring the servers in the Miami office. What is the best recommendation for the Miami office? More than one answer choice may achieve the goal. Select the BEST answer.

- A. A management server that is part of the contoso.com domain
- B. A gateway server that is part of the northwindtraders.com domain
- C. A management server that is part of the northwindtraders.com domain
- D. A gateway server that is part of the contoso.com domain

Correct Answer: D

QUESTION 22

You need to implement the Service Manager Self-Service Portal. What should you do?

- A. Install the web content server on SCSM01. Install the SharePoint Server Web Parts on APP01.
- B. Install the web content server and the SharePoint Server Web Parts on SCSM01.
- C. Install the web content server on WEB01. Install the SharePoint Server Web Parts on WFE01.
- D. Install the web content server and the SharePoint Server Web Parts on WEB01.

Correct Answer: C

Explanation:

Note:

SharePoint Server 2010 is required so the SharePoint Server Web Parts should be installed on WFE01.

Topic 3, Litware, Inc

Overview

Litware, Inc. is a pharmaceutical company.

Litware has an office in Montreal. Litware has a marketing department and a research department.

Existing Environment

Network Infrastructure

The network contains a single Active Directory domain named litwareinc.com. The domain contains 1,000 physical servers that run Windows Server 2008 R2.

All of the servers are located in a leased data center that has a high-bandwidth, low-latency network. The data center contains third-party iSCSI SAN storage devices that support an SMI-S provider.

Application Infrastructure

Users in the research department use multiple instances of a three-tier application named App1. App1 consists of the components shown in the following table.

Tier	Number of servers	Role
Tier 1	2	Load-balanced connection point
Tier 2	1	Business logic handler
Tier 3	2	Backend data store

The Web Server (IIS) server role, WMI providers, Windows services, Windows drivers, and web applications will be installed on the servers that host Tier 2.

Problem Statements

Litware identifies the following issues:

- The cost of leasing data center space is increasing steadily.
- The research department users report that it takes too long to provision new instances of App1.

Requirements

Planned Changes

Litware plans to deploy 400 additional servers that will run Windows Server 2008 R2. The servers will be configured as shown in the following table.

Number of servers	Role	Feature	Department
200	Hyper-V	Failover Clustering	Research
50	Hyper-V	None	Research
100	Hyper-V	Failover Clustering	Marketing
50	Hyper-V	None	Marketing

Litware also plans to deploy the following System Center 2012 components:

- Orchestrator
- App Controller
- Service Manager
- Operations Manager
- Data Protection Manager (DPM)
- Virtualization Machine Manager (VMM)

Litware plans to provide the research department users with the ability to deploy instances of App1.

Private Cloud Infrastructure Requirements

Litware identifies the following requirements for the planned private cloud infrastructure:

- VMM must be available if a server or a service fails.
- Virtual machines must be provisioned by using SAN copy cloning.
- The implementation of App Controller must support single sign-on.
- The implementation of Service Manager must support French and English.
- The implementation of VMM must support the provisioning of virtual machines by using SAN copy.

- Virtual machines hosted on Hyper-V failover clusters must remain available during the installation of Windows updates.
- Physical servers that have workloads that are suitable for a virtualized environment must be virtualized. Performance data must be taken into account when identifying which servers must be virtualized.

Private Cloud Integration Requirements

Litware identifies the following requirements for integrating the System Center 2012 components:

- Incidents in Service Manager must be resolved automatically, whenever possible.
- Alerts generated by Operations Manager must trigger incidents in Service Manager.
- Operations Manager alerts triggered by VMM events must be remediated automatically, whenever possible.
- All of the Orchestrator components responsible for executing the activities of Service Manager workflows must be highly available.

Private Cloud Services Requirements

Litware identifies the following requirements for managing services in the private cloud:

- App1 must be deployed by using a VMM service template.
- The Tier 2 of App1 must be deployed as a highly available virtual machine.
- The research department users must use App Controller to deploy virtual machines and services.
- The virtual machines deployed by the research department users must be hosted on servers in the research department.
- The virtual machines in Tier 1 of App1 must be configured as cluster nodes by using the Network Load Balancing (NLB) feature.
- A web application named WA1 in Tier 2 of App1 must use a connection string that points to a Microsoft SQL Server database in Tier 3 of App1.
- The software components included in Tier 2 of App1 must be deployed as Microsoft Server Application Virtualization (Server App-V) packages, whenever possible.

QUESTION 23

HOTSPOT

You need to recommend which configuration meets the high-availability requirement for the Orchestrator components. The solution must meet the requirements for integrating the System Center 2012 components. What should you recommend? (To answer, select the appropriate high availability configuration for each component in the answer area.)

Answer Area

The Orchestrator database:

The Orchestrator web service:

The runbook server:

Answer Area

The Orchestrator database:

- Failover Clustering
- Highly available virtual machine
- Network Load Balancing

The Orchestrator web service:

- Failover Clustering
- Highly available virtual machine
- Network Load Balancing

The runbook server:

- Failover Clustering
- Highly available virtual machine
- Network Load Balancing

Correct Answer:

Answer Area

The Orchestrator database:

- Failover Clustering
- Highly available virtual machine
- Network Load Balancing

The Orchestrator web service:

- Failover Clustering
- Highly available virtual machine
- Network Load Balancing

The runbook server:

- Failover Clustering
- Highly available virtual machine
- Network Load Balancing

QUESTION 24

You need to recommend a configuration for the App Controller portal. The solution must meet the requirements for the planned private cloud infrastructure. What should you include in the recommendation?

- A. Create an App Controller user role.
- B. Configure constrained delegation for the VMM computer account.
- C. Configure constrained delegation for the App Controller computer account.
- D. Create an App Controller subscription.

Correct Answer: C

QUESTION 25

DRAG DROP

You need to recommend a storage fabric configuration for VMM. The solution must meet the requirements for the planned private cloud infrastructure. Which three actions should you recommend performing in sequence? (To answer, move the appropriate three actions from the list of actions to the answer area and arrange them in the correct order.)

Actions	Answer Area
Configure a storage array.	
Install the Microsoft iSCSI Software Target component.	
Allocate a storage pool to a host group.	
Add a storage device.	
Configure the iSCSI initiator.	

Correct Answer:

Actions	Answer Area
Configure a storage array.	Configure the iSCSI initiator.
Install the Microsoft iSCSI Software Target component.	Add a storage device.
Allocate a storage pool to a host group.	Allocate a storage pool to a host group.
Add a storage device.	
Configure the iSCSI initiator.	

QUESTION 26

You need to recommend a configuration for the VMM network fabric. The solution must meet the requirements for managing services in the private cloud. What should you include in the recommendation?

- A. Disable the Logical network matching setting.
- B. Disable the Automatic creation of virtual networks setting.
- C. Create a virtual IP (VIP) template.
- D. Create a hardware load balancer.

Correct Answer: C

Explanation:

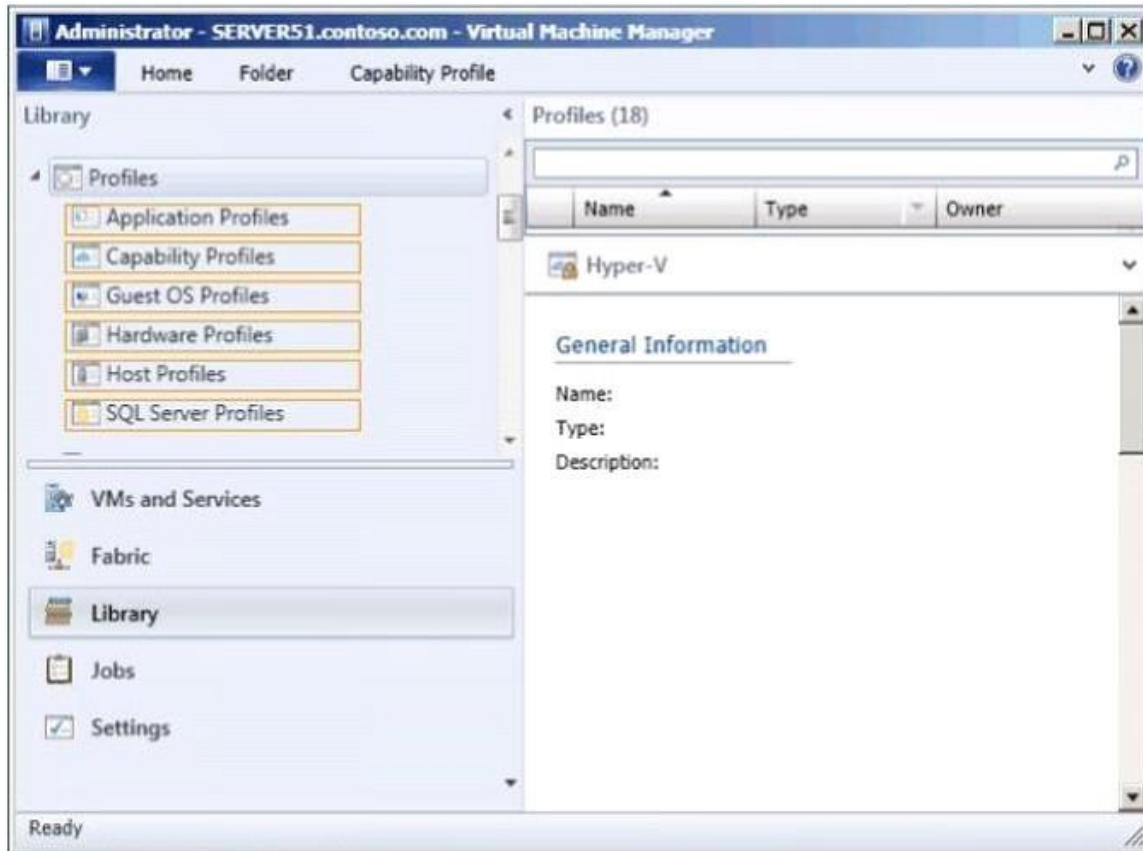
How to Create VIP Templates for Network Load Balancing (NLB) in VMM:

Ref: <http://technet.microsoft.com/en-us/library/hh335100.aspx>

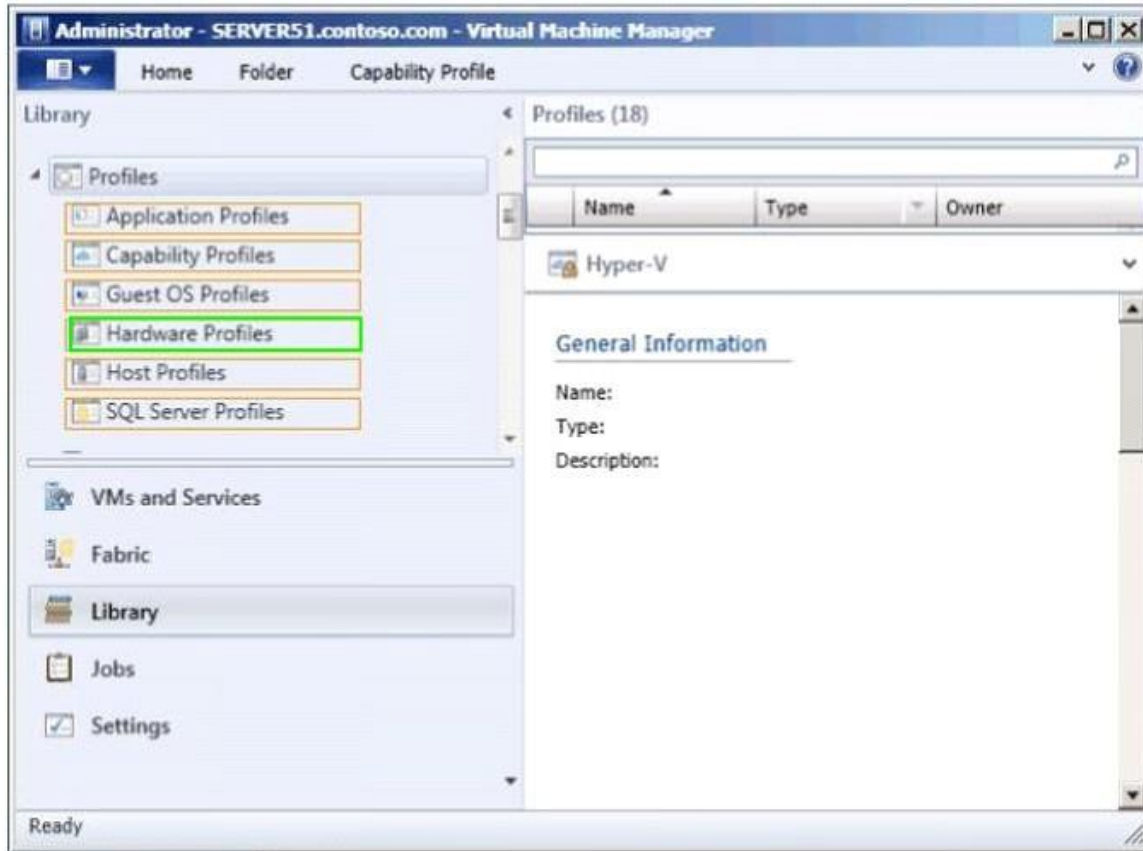
QUESTION 27

HOTSPOT

You need to identify which profile type must be used to ensure that Tier 2 of App1 can be deployed as a highly available virtual machine. Which profile type should you identify? (To answer, select the appropriate profile type in the answer area.)



Correct Answer:



QUESTION 28

You need to identify which component or components of Tier 2 of App1 can be deployed by using Server App-V. Which component or components should you identify? (Each correct answer presents part of the solution. Choose all that apply.)

- A. The Web Server (IIS) server role
- B. Web applications
- C. Windows services
- D. WMI providers
- E. Drivers

Correct Answer: BCD

Explanation:

Some of the features supported by Server App-V are the following:

Windows Services: Server App-V includes the possibility to virtualize Windows Services in a different approach than the one we've seen in Desktop App-V. With Server App-V, the service is installed and placed in the OS as a normal installation of the server application. This way we can monitor it as any local service.

Web applications hosted in IIS: We can virtualize web applications entirely (web sites, virtual directories and application pools) on IIS 6, IIS 7 and IIS 7.5. **WMI:** Server App-V Sequencer also captures the WMI providers and/or classes created during an installation.

SQL Services Reporting Services: Even though SQL Server engine is not supported for

virtualization, the applications that install SQL Services Reporting Services (SSRS) are supported.

COM/DCOM/COM+ objects: These components are registered in the deployment process, this way other applications in the server can access them.

Local users and Groups: If the application is creating users and/or groups during the installation, the Server App-V Sequencer captures it and maintains, including SID, for next deployments. Not all applications are supported for use with Server App-V. Applications such as antivirus

software that require device or kernel driver support are not supported. Server App-V is primarily designed for use with business applications or the business tiers of multi-tiered applications. Consequently some large server applications such as Microsoft Exchange Server, Microsoft SQL Server, and Microsoft SharePoint are not supported. While there is no list of supported applications for use with Server App-V, Server App-V has been optimized to create virtual application packages for applications with the following attributes:

- State persisted to local disk
- Microsoft Windows Services
- Internet Information Services (IIS)
- Registry
- COM+ / DCOM
- Text-based Configuration Files
- WMI Providers
- Microsoft SQL Server Reporting Services
- Local Users and Groups
- Scheduled Tasks
- Microsoft SQL Server Databases

QUESTION 29

You need to recommend a configuration for the SQL Server instance that will host the Service Manager database. The solution must meet the requirements for the planned private cloud infrastructure. What should you include in the recommendation?

- A. Disable full-text search.
- B. Install the SQL Server Integration Services (SSIS).
- C. Enable case sensitivity.
- D. Change the default collation.

Correct Answer: D

Explanation:

Note:

The implementation of Service Manager must support French and English.

QUESTION 30

You need to recommend a solution to identify which servers should be virtualized. What should you include in the recommendation? (More than one answer choice may achieve the goal. Select the BEST answer.)

- A. Configuration Manager P2V Migration Toolkit
- B. Windows Assessment and Deployment Kit (Windows ADK)
- C. Microsoft System Center Advisor (SCA)
- D. Microsoft Assessment and Planning (MAP) Toolkit

Correct Answer: D

EnsurePass.com Members Features:

1. Verified Answers researched by industry experts.
2. Q&As are downloadable in PDF and VCE format.
3. 98% success Guarantee and **Money Back** Guarantee.
4. Free updates for **180** Days.
5. **Instant Access to download the Items**

View list of All Exam provided:

<http://www.ensurepass.com/certifications?index=A>

To purchase Lifetime Full Access Membership click here:

<http://www.ensurepass.com/user/register>

Valid Discount Code for 2015: JREH-G1A8-XHC6

To purchase the HOT Microsoft Exams:

<u>Microsoft</u>			
70-243	70-347	70-466	70-515
70-246	70-410	70-467	70-516
70-247	70-411	70-480	70-519
70-321	70-412	70-483	70-583
70-331	70-413	70-484	70-640
70-332	70-414	70-485	70-649
70-336	70-417	70-486	70-668
70-337	70-461	70-487	70-680
70-341	70-462	70-488	70-687
70-342	70-463	70-489	70-688
70-346	70-464	70-513	70-689

