



**Vendor: Cisco**

**Exam Code: 350-080**

**Exam Name: CCIE Data Center Written Exam**

**Version: Demo**

**QUESTION 1**

FabricPath brings the benefits of routing protocols to layer 2 network Ethernet environments. What are the advantages of using FabricPath technology? (Choose three.)

- A. FabricPath provides MAC address scalability with conversational learning
- B. Loop mitigation with TTL in the frame field
- C. STPI independence
- D. 10 Gbps bandwidth
- E. Layer 2 extensions between data centers

**Correct Answer:** ABC

**QUESTION 2**

A network administrator has installed an N7K-F248-25XP module into an existing chassis. The module is powered on, but the interfaces are all in VDC0. What is the reason for this?

- A. The chassis needs an EPLD upgrade to support the new module type.
- B. The default VDC cannot support F2 modules.
- C. The interfaces must be allocated into a VDC for F2 modules only.
- D. The module has failed GOLD diagnostics, and the switch has isolated the ports to protect the integrity of the system.

**Correct Answer:** C

**QUESTION 3**

Which two statements about SAN port channels configured on Cisco Nexus 5000 Series switches are true? (Choose two.)

- A. The bring up protocol automatically detects and overrides any misconfiguration.
- B. You can manually configure channel groups, or they can be automatically created.
- C. Changes in configuration to the SAN port channel interface must also be made to all members of the channel group.
- D. The port channel protocol uses the exchange fabric parameters command to communicate across peer ports in an ISL.
- E. The port channel protocol ensures that a set of ports is eligible to be part of the same SAN port channel.

**Correct Answer:** BE

**QUESTION 4**

Which three capabilities make the Cisco Nexus 7010 switch an effective solution for the data center core? (Choose three.)

- A. virtualization
- B. unified I/O
- C. support for 48-port Gb/s line card
- D. support for Data Center Service Modules
- E. high performance
- F. high availability

**Correct Answer:** BEF

**QUESTION 5**

Which statement about Cisco Unified Fabric switches is correct?

- A. The Nexus 5000 family of switches does not support vPC when running in either NPV or FCoE NPV mode.
- B. The MDS 9100 family of switches is an excellent design choice as a Unified Fabric edge switch.
- C. The Nexus 7000 Series Switches can support the NPIV mode of operation, but cannot function as a complete Fibre Channel Forwarder.
- D. The Nexus 7000 Series Switches cannot support advanced Cisco Fibre Channel features such as IVR.
- E. The MDS family of Cisco Unified Fabric switches supports both the Fibre Channel Forwarder and Fibre Channel Bridge functions.

**Correct Answer:** E

**QUESTION 6**

Which statement about SAN port channels configured on Cisco Nexus 5000 Series Switches is true?

- A. A single SAN port channel can have both Fibre Channel and virtual Fibre Channel interfaces.
- B. SAN port channels can include up to 16 interfaces.
- C. SAN port channels distribute traffic across all links in the port channel when source ID and destination ID load balancing are used.
- D. The links in SAN port channels can be connected to different sets of switches.
- E. The On mode of operation means ports only operate as part of a SAN port channel or remain inactive.

**Correct Answer:** E

**QUESTION 7**

Which capabilities are not supported in DCNM device manager?

- A. manage SNMPv3 security access to switches
- B. save and copy configuration files and software images
- C. configure VLANs and Ethernet port channels
- D. manage 2148T FEX, 2232PP FEX, and 2248TP FEX
- E. configure FCoE

**Correct Answer:** C

**QUESTION 8**

What is the use of NPV in Cisco Unified Computing Systems? (Choose two.)

- A. Compatibility with third-party Fibre Channel switches
- B. Faster throughput
- C. Reduce domain IDs in a Fibre Channel environment
- D. Support for increased number of VSANs

E. Support for SAN port channels

**Correct Answer:** AC

**QUESTION 9**

If the default VDC is configured to limit resources to a specific module type, what happens when a module that does not match the resource type is installed?

- A. The module is powered up, and interfaces are in an "admin down" state.
- B. The module is denied power, and a syslog message is generated.
- C. The module is powered up, and interfaces are allocated to VDC0.
- D. The module is powered up, and interfaces are allocated to VDC100.

**Correct Answer:** C

**QUESTION 10**

What is the mechanism that is used to allocate MAC addresses that are assigned to the VDC for the system MAC address?

- A. NX-OS uses a random MAC address from the IEEE OUI block that is assigned to Cisco.
- B. The VDC system MAC is pulled from the active supervisor and concatenated through a hash to ensure uniqueness.
- C. NX-OS uses a value that is based on a range that is assigned to the SPROM of the system backplane.
- D. The VDC system MAC is based on a range that is allocated to the first line card that is installed in the switch.

**Correct Answer:** C

**QUESTION 11**

Which three flow-control port states lead to enabled link flow control? (Choose three.)

- A. Receive port: Enabled, Transmit port: Enabled
- B. Receive port: Enabled, Transmit port: Desired
- C. Receive port: Enabled, Transmit port: Disabled
- D. Receive port: Disabled, Transmit port: Desired
- E. Receive port: Desired, Transmit port: Desired

**Correct Answer:** ABE

**QUESTION 12**

In a configuration with redundant supervisors, how many IP addresses are required to configure full remote access via management 0?

- A. Two IP addresses, one for each supervisor
- B. Three IP addresses, one virtual IP and one physical IP for each supervisor
- C. One IP address that is shared among supervisors
- D. None--management 0 will use the IP address from the first SVI that is created

**Correct Answer:** C

**QUESTION 13**

VLAN configuration using DCNM can be completed by which two supported methods? (Choose two.)

- A. Copy and paste the VLAN, along with its VLAN ID, name, type, admin state, and admin status, from one device to another.
- B. Create a single VLAN or a range of VLANs.
- C. A VLAN is created only after choosing File > Deploy to apply changes.
- D. After a VLAN is created, it requires the state to be enabled.
- E. Modify the existing VLAN by choosing Interface > VLAN > VLAN Settings.

**Correct Answer:** AB

**QUESTION 14**

Enabling jumbo frame support on a Cisco Nexus 5500 Switch can be done through which method?

- A. Changing the default policy map from a default MTU of 1500 to 9216
- B. Using the command system jumbomtu 9216
- C. Using the command interface MTU 9216
- D. Configuring the default Ethernet system class to an MTU of 9216 with a new network QoS policy map

**Correct Answer:** D

**QUESTION 15**

Which two statements about authentication settings for DCNM-LAN are true? (Choose two.)

- A. If none of the authentication servers that are configured for the current authentication mode responds to an authentication request, the DCNM-LAN server falls back to local authentication.
- B. DCNM-LAN only supports TACACS+.
- C. Each DCNM-LAN server will have the same device credentials.
- D. Administering DCNM-LAN authentication settings requires an authentication license.
- E. DCNM-LAN server users are local to the DCNM-LAN server.

**Correct Answer:** AE

**QUESTION 16**

DCNM is capable of monitoring the network performance of a SAN. What are the three primary areas of this operation?

- A. Analyze traffic, device management, and network monitoring
- B. DCNM-SAN, DCNM-LAN, and device manager
- C. Definition of flows, information collection, and data presentation
- D. SNMP poll data, MIB analysis, and report generation

**Correct Answer:** C

**QUESTION 17**

What is required for proper implementation of jumbo frame support on a Cisco Nexus 2000 Series Fabric Extender?

- A. The interface configured as FEX fabric requires the MTU to be set to jumbo.
- B. The service policy must be applied to the system QoS.
- C. The device defaults to jumbo frame support; no changes are required.
- D. The switchport in the FEX interface must be set to MTU 9216.

**Correct Answer:** B

**QUESTION 18**

DCNM device discovery is done by connecting to Cisco NX-OS devices and doing which three of these? (Choose three.)

- A. Collecting the running configuration
- B. Raising the logging level to meet the minimum requirement
- C. Discovering all devices by default
- D. Discovering devices using multiple user accounts as long as they are administrator-level accounts
- E. Using LLDP to discover network adaptors

**Correct Answer:** ABE

**QUESTION 19**

You can install Cisco DCNM-LAN on a supported version of which two operating systems? (Choose two.)

- A. Microsoft Windows Server
- B. Novell SUSE Linux Enterprise Server
- C. Oracle Enterprise Linux
- D. Red Hat Enterprise Linux
- E. VMware ESX

**Correct Answer:** AD

**QUESTION 20**

Cisco DCNM-LAN supports the configuration and monitoring of many Cisco NX-OS features, including which two of these Ethernet protocols? (Choose two.)

- A. GLBP
- B. HSRP
- C. IRDP
- D. VRRP

**Correct Answer:** AB

**QUESTION 21**

The vPC peer-gateway capability allows a vPC switch to act as the active gateway for packets that are addressed to the router MAC address of the vPC peer. This feature enables local forwarding of such packets without the need to cross the vPC peer link. Which statements are true about the vPC peer-gateway? (Choose two.)

- A. The vPC peer-gateway feature is enabled by default.
- B. The vPC peer-gateway feature can be configured globally under the vPC domain submode.
- C. Enabling the peer-gateway feature automatically disables IP redirects on all interface VLANs mapped over a vPC VLAN to avoid generation of IP redirect messages for packets switched through the peer gateway router.
- D. The vPC peer-gateway feature only works with HSRP protocol.

**Correct Answer:** BC

**QUESTION 22**

Cisco UCS provides integration interfaces and protocols to support heterogeneous data center environments and supports standard monitoring and event notification systems, providing data to standard enterprise-management tools. Which two of these list the primary Cisco UCS interfaces and industry standard-based read-only interfaces? (Choose two.)

- A. UCS Manager XML API and UCS CLI
- B. SNMP, SMASH CLP, and CIM-XML
- C. UCS Manager, DCOS, and Local-mgmt
- D. SoL and NX-OS
- E. debug-plugin and UCS Manager GUI

**Correct Answer:** AB

**QUESTION 23**

A virtual port channel (vPC) allows links that are physically connected to two different Cisco Nexus devices to appear as a single port channel to a third device. Which are the mandatory steps for configuring vPC? (Choose six.)

- A. Enable feature vPC
- B. Define domains
- C. Establish peer keepalive connectivity
- D. Create a peer link
- E. Configure the peer link as a trunk port
- F. Create port channels and vPCs
- G. Define port channel load-balancing method
- H. Make sure configurations are consistent

**Correct Answer:** ABCDFH

**QUESTION 24**

When creating a role in a Cisco Nexus 7000 Series Switch, rules are used to define the type of operations that a role will allow the user to perform. Which two of these parameters cannot be applied as a rule? (Choose two.)

- A. port-profile
- B. command
- C. access-list
- D. feature-group
- E. OID

**Correct Answer:** AC

**QUESTION 25**

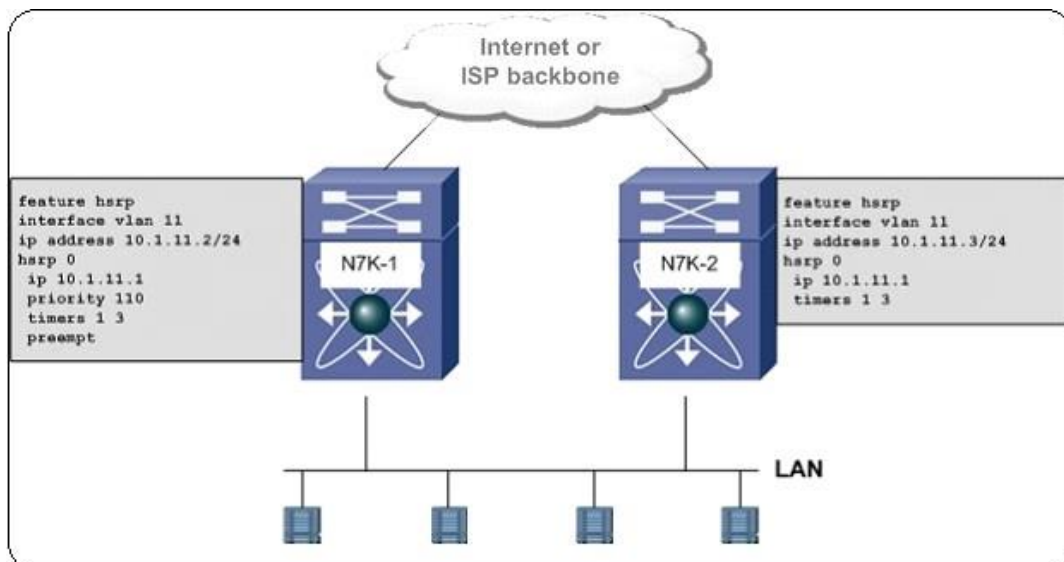
Overlay Transport Virtualization (OTV) overlay interface is a logical multiaccess and multicast-capable interface that must be explicitly defined by the user and where the entire OTV configuration is applied. Which statements are true about OTV overlay interface? (Choose two.)

- A. When an OTV edge device receives a Layer 2 frame destined for a remote data center site, the frame is logically forwarded to the overlay interface.
- B. The OTV edge device performs the dynamic OTV encapsulation on the Layer 2 packet and sends it to the join interface toward the routed domain.
- C. When the OTV edge device receives a Layer 2 frame destined for a remote data center site, the frame is logically forwarded to the join interface.
- D. The OTV edge device performs the dynamic OTV encapsulation on the Layer 2 packet and sends it to the overlay interface toward the routed domain.

**Correct Answer:** AB

**QUESTION 26**

Refer to the exhibit. The network administrator is seeing N7K-1 having issues with VLAN 11, and interface VLAN 11 is resetting, causing frequent HSRP state changes. Which two actions would reduce HSRP state changes? (Choose two.)





- A. On N7K-1, configure the HSRP extended hold timer to 180, extending the HSRP hello message hold time.
- B. On N7K-2, configure the HSRP extended hold timer to 180, extending the HSRP hello message hold time.
- C. On N7K-1, configure the pre-empt delay minimum to 180 in order to delay N7K-1 from taking over as the HSRP active router.
- D. On N7K-2, configure the pre-empt delay minimum to 180 in order to delay N7K-2 from taking over as the HSRP active router.
- E. On N7K-2, increase the HSRP priority to 150.
- F. On N7K-2, decrease the HSRP priority to 50.

**Correct Answer:** CE

#### QUESTION 27

Overlay Transport Virtualization (OTV) join interface is used to source the OTV encapsulated traffic and send it to the Layer 3 domain of the data center network. Which statements are true about OTV join interface? (Choose three.)

- A. Join interface is a Layer 3 entity, and with the Cisco NX-OS release 6.0, it can only be defined as a physical interface, physical subinterface, Layer 3 port channel, or Layer 3 port channel subinterface.
- B. A single join interface can be defined and associated with a given OTV overlay.
- C. Multiple overlays can also share the same join interface.
- D. Join interface can be a loopback interface.
- E. The join interface is a Layer 3 entity that can be defined as a physical interface but not as a logical one.

**Correct Answer:** ABC

#### QUESTION 28

Cisco NX-OS Software supports SNMPv1, SNMPv2c, and SNMPv3. Both SNMPv1 and SNMPv2c use a community-based form of security. SNMPv3 provides secure access to devices by a combination of authenticating and encrypting frames over the network. Which security features are provided in Cisco NX-OS SNMPv3? (Choose three.)

- A. encryption--scrambles the packet contents to prevent them from being seen by unauthorized sources
- B. password--a password (community string) sent in clear text between a manager and agent for added protection
- C. authentication--determines that the message is from a valid source
- D. message integrity--ensures that a packet has not been tampered with while it was in transit
- E. user--to determine if user authentication is used instead of community strings

**Correct Answer:** ACD

#### QUESTION 29

The hardware and software configurations for vPC+ are similar to that of traditional vPC. What are the differences in the configuration of vPC+? (Choose three.)

- A. FabricPath switch ID must be configured under the vPC domain.

- B. Virtual switch ID of vPC+ must be configured under FabricPath domain.
- C. On Cisco Nexus 7000 Series Switch, F1 interfaces must be used as the vPC+ peer links.
- D. The vPC+ peer link must be configured as a Cisco FabricPath core port (switchport mode fabricpath).
- E. FabricPath subswitch ID must be configured under the vPC domain.

**Correct Answer:** ACD

### QUESTION 30

Smart Call Home provides an email-based notification for critical system policies. A range of message formats are available for compatibility with pager services, standard email, or XML-based automated parsing applications. Destination profiles are used by Smart Call Home when sending notifications. Which of these are predefined destination profiles supported by Cisco NX-OS Software? (Choose three.)

- A. short-text-destination
- B. prerecorded audio alerts
- C. CiscoTAC-1
- D. dial911
- E. full-text-destination

**Correct Answer:** ACE

### QUESTION 31

After configuring FabricPath, the following appears in the syslog:

```
%STP-2-L2GW_BACKBONE_BLOCK: L2 Gateway Backbone port inconsistency blocking port port-channel100 on VLAN0010.
```

What is the cause of this message?

- A. STP must be disabled; message indicates that STP is enabled.
- B. STP is misconfigured; root guard must be disabled.
- C. An inferior BPDU is received on a Cisco FabricPath edge port.
- D. A superior BPDU is received on a Cisco FabricPath edge port.

**Correct Answer:** D

### QUESTION 32

Which description is correct for a private VLAN community port with respect to Layer 2 communications?

- A. It communicates with all other community ports in the private VLAN domain.
- B. It communicates with only isolated ports in the private VLAN domain.
- C. It communicates only with other community ports in the same community and associated promiscuous ports.
- D. It communicates only with associated promiscuous and isolated ports.

**Correct Answer:** C

**QUESTION 33**

On Cisco Nexus 7000 Series Switch Cisco FabricPath domain, one switch becomes the root for the multidestination tree. Cisco FabricPath IS-IS will automatically select root switches for each multidestination tree. One of the parameters used to select the root is system ID. Which statements are true about system ID? (Choose two.)

- A. System ID is a unique 12-bit SID.
- B. System ID is a 48-bit value composed of the VDC MAC address.
- C. Higher system ID is preferred.
- D. Lower system ID is preferred.

**Correct Answer:** BC

**QUESTION 34**

Which two are benefits of using remote AAA services for Cisco Nexus products? (Choose two.)

- A. They make it easier to manage user logins and passwords across devices.
- B. They enable automated configuration backup for devices.
- C. They centrally manage user attributes and permissions.
- D. Local console access is never included in AAA and can be used for access when the AAA servers are down.

**Correct Answer:** AC

**QUESTION 35**

What tasks can only be performed in the default or admin VDC?

- A. EPLD upgrade, IOS ISSU, FCoE feature enablement, CoPP configuration, and rolling back a checkpoint
- B. EPLD upgrade, Cisco IOS ISSU, FCoE feature enablement, CoPP configuration, and ACL capture enablement
- C. EPLD upgrade, Cisco IOS ISSU, FCoE feature enablement, CoPP configuration and SNMP configuration
- D. EPLD upgrade, Cisco IOS ISSU, FCoE feature enablement, CoPP configuration, and write erase

**Correct Answer:** B

**QUESTION 36**

What does the mac packet-classify command do when applied to an interface configuration?

- A. It enables MAC ACLs to be applied to only IP packets that enter the interface.
- B. It enables MAC ACLs to be applied to only non-IP packets that enter the interface.
- C. It enables MAC ACLs to be applied to all packets that enter the interface.
- D. It enables MAC ACLs to be used for QoS settings.

**Correct Answer:** C

**QUESTION 37**

In a virtual port channel (vPC) configuration, VRRP exhibits which characteristic?

- A. VRRP does not work with vPC due to industry standard requirements
- B. VRRP works with vPC in traditional active/standby modes
- C. VRRP works with vPC in an active/active mode
- D. VRRP work with vPC as long as vPC peer-gateway is configured to address non-standard replies to the physical MAC address

**Correct Answer: C**

**QUESTION 38**

On Cisco Nexus 5000 Series Switches, where are the virtual output queues implemented, and what is the main purpose of virtual output queues?

- A. on all ingress interfaces; to ensure maximum throughput on a per-egress, per-CoS basis
- B. on all ingress interfaces; to provide independent congestion management and 16 queues
- C. on all egress interfaces; so that a congested egress port does not affect traffic directed to other egress ports
- D. on all egress interfaces; to prevent head-of-line blocking by utilizing multiple virtual output queues
- E. on all egress interfaces; to be able to use IEEE 802.1p CoS

**Correct Answer: A**

**QUESTION 39**

On the Cisco Nexus 7000 Series Switch, Control Plane Policing is enforced on which component?

- A. The supervisor module enforces CoPP before out-of-policy traffic reaches the CPU
- B. The fabric modules enforce CoPP in the fabric before out-of-policy traffic reaches the CPU
- C. The linecards enforce CoPP locally before out-of-policy traffic reaches the CPU
- D. The egress virtual output queue enforces CoPP locally before out-of-policy traffic reaches the CPU

**Correct Answer: C**

**QUESTION 40**

You are troubleshooting a PIM neighbor adjacency that is not coming up. You issued the command `show ip pim neighbor e1/18` and confirmed there is no PIM neighbor on the interface. What is the problem based on the debug output?

```
2012 Feb 23 23:00:08.676710 pim: [16132] (default-base) Received unauthenticated hello-message from 10.1.1.2 on Ethernet1/18, message discarded
```

```
2012 Feb 23 23:00:12.528763 pim: [16132] (default-base) Send Hello with AH on Ethernet1/18 from 10.1.1.1, holdtime. 105 secs, dr-priority: 1
```

- A. The peer router 10.1.1.2 has PIM disabled on its interface connecting to Ethernet1/18.
- B. The peer router 10.1.1.2 has the wrong PIM password configured on its interface connecting to Ethernet1/18.

- C. The local router 10.1.1.1 has the wrong PIM password configured on Ethernet1/18.
- D. The peer router 10.1.1.2 does not have PIM hello authentication enabled on its interface connecting to Ethernet1/18.
- E. The local router 10.1.1.1 does not have PIM hello authentication enabled for Ethernet1/18.

**Correct Answer:** D

## EnsurePass.com Members Features:

1. Verified Answers researched by industry experts.
2. Q&As are downloadable in PDF and VCE format.
3. 98% success Guarantee and **Money Back** Guarantee.
4. Free updates for **180** Days.
5. **Instant Access to download the Items**

View list of All Exam provided:

<http://www.ensurepass.com/certifications?index=A>

To purchase Lifetime Full Access Membership click here:

<http://www.ensurepass.com/user/register>

**Valid Discount Code for 2015: JREH-G1A8-XHC6**

To purchase the HOT Exams:

<u>Cisco</u>		<u>CompTIA</u>		<u>Oracle</u>	<u>VMWare</u>	<u>IBM</u>
<a href="#"><u>100-101</u></a>	<a href="#"><u>640-554</u></a>	<a href="#"><u>220-801</u></a>	<a href="#"><u>LX0-101</u></a>	<a href="#"><u>1Z0-051</u></a>	<a href="#"><u>VCAD510</u></a>	<a href="#"><u>C2170-011</u></a>
<a href="#"><u>200-120</u></a>	<a href="#"><u>200-101</u></a>	<a href="#"><u>220-802</u></a>	<a href="#"><u>N10-005</u></a>	<a href="#"><u>1Z0-052</u></a>	<a href="#"><u>VCP510</u></a>	<a href="#"><u>C2180-319</u></a>
<a href="#"><u>300-206</u></a>	<a href="#"><u>640-911</u></a>	<a href="#"><u>BR0-002</u></a>	<a href="#"><u>SG0-001</u></a>	<a href="#"><u>1Z0-053</u></a>	<a href="#"><u>VCP550</u></a>	<a href="#"><u>C4030-670</u></a>
<a href="#"><u>300-207</u></a>	<a href="#"><u>640-916</u></a>	<a href="#"><u>CAS-001</u></a>	<a href="#"><u>SG1-001</u></a>	<a href="#"><u>1Z0-060</u></a>	<a href="#"><u>VCAC510</u></a>	<a href="#"><u>C4040-221</u></a>
<a href="#"><u>300-208</u></a>	<a href="#"><u>640-864</u></a>	<a href="#"><u>CLO-001</u></a>	<a href="#"><u>SK0-003</u></a>	<a href="#"><u>1Z0-474</u></a>	<a href="#"><u>VCP5-DCV</u></a>	<a href="#"><u>RedHat</u></a>
<a href="#"><u>350-018</u></a>	<a href="#"><u>642-467</u></a>	<a href="#"><u>ISS-001</u></a>	<a href="#"><u>SY0-301</u></a>	<a href="#"><u>1Z0-482</u></a>	<a href="#"><u>VCP510PSE</u></a>	<a href="#"><u>EX200</u></a>
<a href="#"><u>352-001</u></a>	<a href="#"><u>642-813</u></a>	<a href="#"><u>JK0-010</u></a>	<a href="#"><u>SY0-401</u></a>	<a href="#"><u>1Z0-485</u></a>		<a href="#"><u>EX300</u></a>
<a href="#"><u>400-101</u></a>	<a href="#"><u>642-832</u></a>	<a href="#"><u>JK0-801</u></a>	<a href="#"><u>PK0-003</u></a>	<a href="#"><u>1Z0-580</u></a>		
<a href="#"><u>640-461</u></a>	<a href="#"><u>642-902</u></a>			<a href="#"><u>1Z0-820</u></a>		



Guaranteed Success with EnsurePass VCE Software & PDF File