



**Vendor:** IBM

**Exam Code:** SPS-202

**Exam Name:** IBMSPSSMBPDM: IBM SPSS Modeler  
Business Partner Data Mining Associate

**Version:** DEMO

**QUESTION NO: 1**

How many phases are in the CRISP-DM Process Methodology?

- A. Four
- B. Five
- C. Six
- D. Seven

**Answer: C**

**QUESTION NO: 2**

True or false: the CRISP-DM Process Methodology is a linear process.

- A. True
- B. False

**Answer: B**

**QUESTION NO: 3**

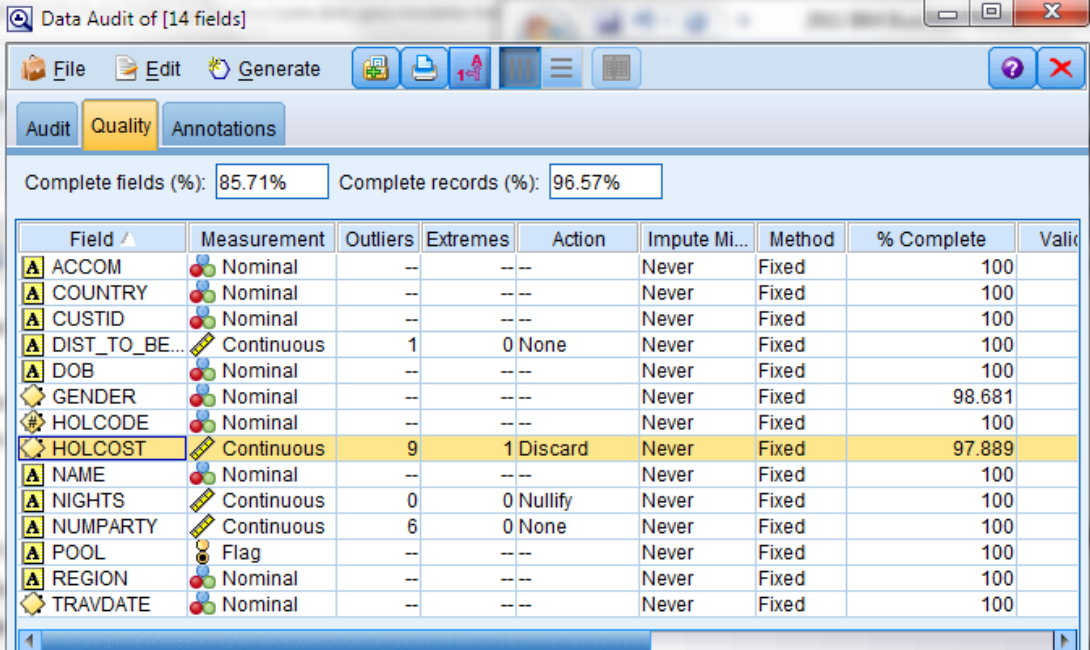
Which node is used to read data from a comma delimited text file?

- A. Var. File
- B. Data Collection
- C. Fixed File
- D. Statistics File

**Answer: A**

**QUESTION NO: 4**

Examine the Data Audit output shown below.



The screenshot shows a 'Data Audit of [14 fields]' window. It has tabs for 'Audit', 'Quality', and 'Annotations'. Below the tabs, it displays 'Complete fields (%): 85.71%' and 'Complete records (%): 96.57%'. A table lists the fields with their measurement types, outlier and extreme counts, actions, imputation methods, and completion percentages. The 'HOLCOST' field is highlighted in yellow.

Field	Measurement	Outliers	Extremes	Action	Impute Mi...	Method	% Complete	Valid
ACCOM	Nominal	--	--		Never	Fixed	100	
COUNTRY	Nominal	--	--		Never	Fixed	100	
CUSTID	Nominal	--	--		Never	Fixed	100	
DIST_TO_BE...	Continuous	1	0	None	Never	Fixed	100	
DOB	Nominal	--	--		Never	Fixed	100	
GENDER	Nominal	--	--		Never	Fixed	98.681	
HOLCODE	Nominal	--	--		Never	Fixed	100	
HOLCOST	Continuous	9	1	Discard	Never	Fixed	97.889	
NAME	Nominal	--	--		Never	Fixed	100	
NIGHTS	Continuous	0	0	Nullify	Never	Fixed	100	
NUMPARTY	Continuous	6	0	None	Never	Fixed	100	
POOL	Flag	--	--		Never	Fixed	100	
REGION	Nominal	--	--		Never	Fixed	100	
TRAVDATE	Nominal	--	--		Never	Fixed	100	

What action will occur in a generated Outlier & Extreme Supernode for HOLCOST?

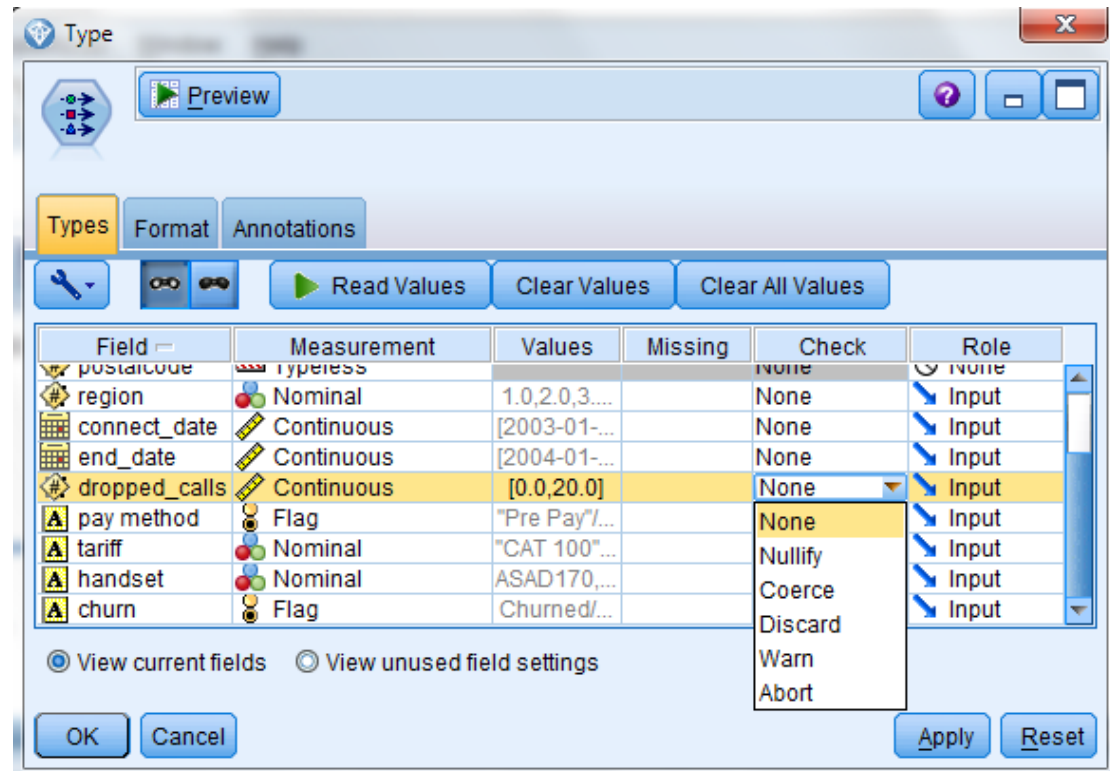
- A. Nine records will be set to the system missing (null) value for HOLCOST.
- B. Ten records will be deleted.
- C. Ten records will be set to the system missing (null) value for HOLCOST.

D. Nine records will be deleted.

**Answer: B**

**QUESTION NO: 5**

What specifications are necessary to change all values outside the range 1 to 15 in field dropped\_calls to the undefined (\$null\$) value?



A. Pass Values and Check action Nullify

B. Specify Values Lower 1 and Upper 15 and Check action Nullify

C. Specify Values Lower 1 and Upper 15 and Check action Discard

D. Read Values and Check action Warn

**Answer: B**