



**Exam Code:** 642-642

**Exam Name:** Quality of Service(QoS)

**Vendor:** CISCO

**Version:** DEMO

## Part: A

1: In an unmanaged CE router implementation, how does the service provider enforce the SLA?

- A.by using class-based policing on the CE to PE link to limit the customer's input rate
- B.by marking on the CE to PE link and using CBWFQ and CB-WRED on the PE to P link
- C.by marking on the CE to PE link and using class-based policing on the PE to P link
- D.by using class-based random discard on the CE to PE link to limit the customer's input rate

**Correct Answers: A**

2: In a typical converged campus network, which two of the following are considered QoS best practices? (Choose two.)

- A.Traffic classification and marking is performed as close to the traffic source as possible.
- B.Traffic classification and marking is performed at the high speed core layer.
- C.Ensure voice traffic is serviced by a weighted fair queue.
- D.Only a reasonable number of applications should be classified into the mission-critical traffic class.
- E.NBAR is used at the high speed core layer to discover and classify network applications.
- F.Catalyst switches should use weighted round robin (WRR) queuing giving the voice traffic the highest priority.

**Correct Answers: A D**

3: What are two benefits of WFQ? (Choose two.)

- A.WFQ is very easy to configure, and no manual traffic classification is necessary.
- B.WFQ can provide fixed-bandwidth and fixed-delay guarantees.
- C.WFQ can provide fixed-bandwidth guarantees.
- D.WFQ can provide fixed-delay guarantees.
- E.WFQ prevents the large-volume flows with large packet size from starving out the low-volume flows with small packet size.
- F.Based on DSCP, WFQ allows weighted, random dropping of packets when the WFQ system is full.

**Correct Answers: A E**

6: Based on the following 2950 switch configurations, which statement is correct?

```
no wrr-queue cos-map
```

```
wrr-queue bandwidth 20 10 70 1
```

```
wrr-queue cos-map 4 5
```

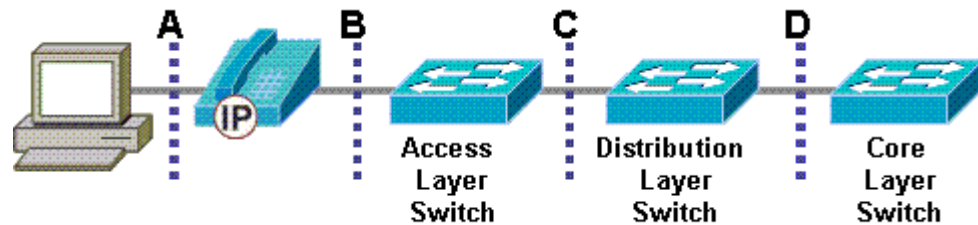
```
wrr-queue cos-map 1 0 1 2 3
```

```
wrr-queue cos-map 3 6 7
```

- A.Queue 1 is setup as the expedite queue.
- B.Queue 2 is setup as the expedite queue.
- C.Queue 3 is setup as the expedite queue.
- D.Queue 4 is setup as the expedite queue.
- E.No queue is setup as the expedite queue.

**Correct Answers: E**

7: Refer to the exhibit. A typical configuration involving an IP phone with an attached PC is shown. According to QoS recommendations, at which demarcation line (shown as dotted lines) would the trust boundary normally exist?



- A.A
- B.B
- C.C
- D.D

**Correct Answers: B**

8: Which technology is required when configuring FRF.12 on a Cisco device?

- A.FR11.c
- B.FR.8
- C.VoFR
- D.MLP with interleaving
- E.FRTS
- F.WRED

**Correct Answers: E**

9: The following commands have been configured under the fa0/1 interface on the 2950 switch:

```
wrr-queue bandwidth 20 1 80 0
```

```
mls qos trust cos
```

```
mls qos trust device cisco-phone
```

Voice traffic from the IP phone that is directly connected to the fa0/1 interface is experiencing excessive delays. What could be the cause of this problem?

- A.The wr-queue bandwidth weightings are not correct.
- B.The default wr-queue cos-map is being used.
- C.The default cos-to-dscp map is being used.
- D.The default dscp-to-cos map is being used.
- E.The trust boundary configuration is not correct.

**Correct Answers: B**

10: Based on the configuration, which two statements are true? (Choose two.)

```
policy-map shape-cbwfq
class interactive
  shape average 256000
  shape adaptive 128000
  bandwidth 128
```

- A.The interactive traffic class will have a minimum bandwidth guarantee of 256 kbps.
- B.The interactive traffic class will have a maximum bandwidth guarantee of 256 kbps.
- C.If the interactive traffic class exceeds an average rate of 256 kbps, the traffic rate will be throttled down to 128 kbps.
- D.This configuration allows class-based traffic shaping to lower the traffic rate in response to the BECN bit.
- E.The interactive traffic class will have a min-rate (min-cir) of 128 kbps.

**Correct Answers: D E**