

Cisco ICND2 640-816 Exam



Vendor : Cisco

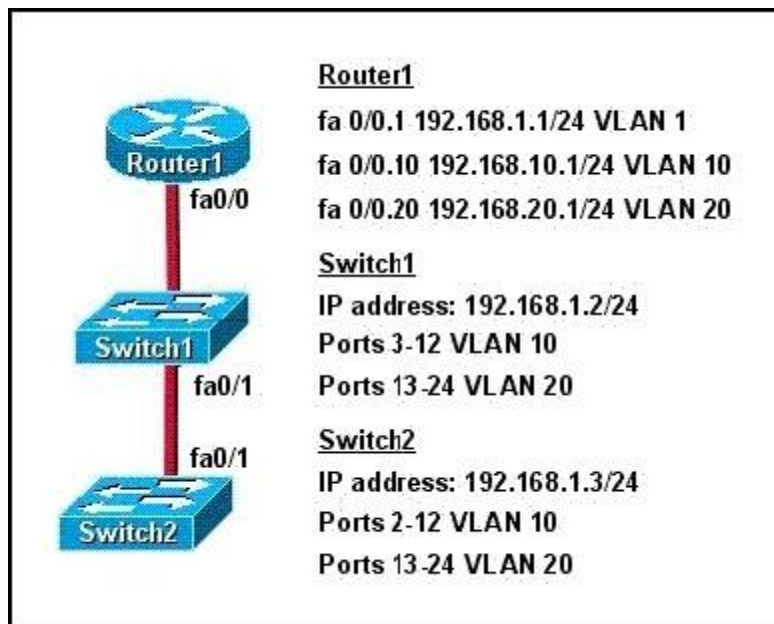
Exam Code: 640-816

Exam Name: Interconnecting Cisco Networking Devices Part 2

Version: Demo

QUESTION 1

Refer to the exhibit. How should the FastEthernet0/1 ports on the 2950 model switches that are shown in the exhibit be configured to allow connectivity between all devices?

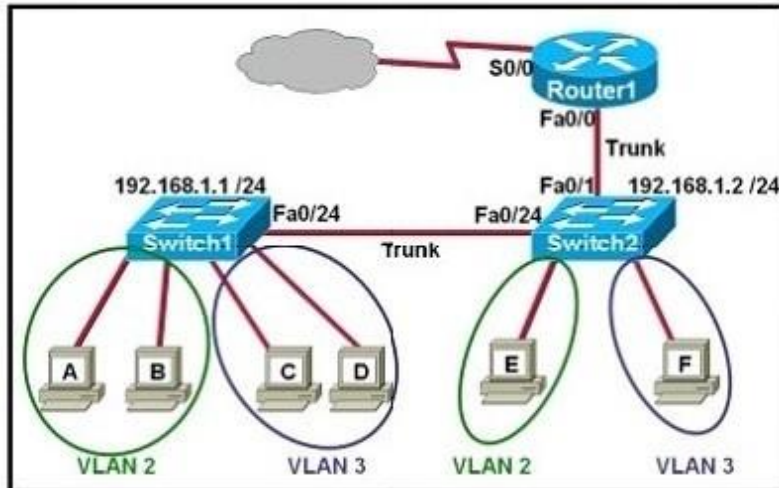


- A. The ports only need to be connected by a crossover cable.
- B. SwitchX (config)# interface fastethernet 0/1
 SwitchX (config-if)# switchport mode access
 SwitchX (config-if)# switchport access vlan 1
- C. SwitchX (config)# interface fastethernet 0/1
 SwitchX (config-if)# switchport mode trunk
 SwitchX (config-if)# switchport trunk vlan 1
 SwitchX (config-if)# switchport trunk vlan 10
 SwitchX (config-if)# switchport trunk vlan 20
- D. SwitchX(config)# interface fastethernet 0/1
 SwitchX(config-if)# switchport mode trunk

Correct Answer: D

QUESTION 2

Refer to the exhibit. Which two statements are true about interVLAN routing in the topology that is shown in the exhibit? (Choose two.)



- A. Host E and host F use the same IP gateway address.
- B. Router1 and Switch2 should be connected via a crossover cable.
- C. Router1 will not play a role in communications between host A and host D.
- D. The FastEthernet 0/0 interface on Router1 must be configured with subinterfaces.
- E. Router1 needs more LAN interfaces to accommodate the VLANs that are shown in the exhibit.
- F. The FastEthernet 0/0 interface on Router1 and Switch2 trunk ports must be configured using the same encapsulation type.

Correct Answer: DF

QUESTION 3

A department decides to replace its hub with a Catalyst 2950 switch that is no longer needed by another department. To prepare the switch for installation, the network administrator has erased the startup configuration and reloaded the switch. However, PCs that are connected to the switch experience various connectivity problems. What is a possible cause of the problem?

- A. The VLAN database was not erased.
- B. The management VLAN is disabled.
- C. The running configuration should have been erased.
- D. The "mode" button was not pressed when the switch was reloaded.
- E. The switch was not configured with an IP address or a default gateway.

Correct Answer: A

QUESTION 4

Refer to the exhibit. Why has this switch not been elected the root bridge for VLAN1?

```
Switch# show spanning-tree vlan 1
VLAN0001
  Spanning tree enabled protocol rstp
  Root ID    Priority    20481
            Address    0008.217a.5800
            Cost      38
            Port      1 (FastEthernet0/1)
            Hello Time 2 sec  Max Age 20 sec  Forward Delay 15 sec

  Bridge ID  Priority    32769 (priority 32768 sys-id-ext 1)
            Address    0008.205e.6600
            Hello Time 2 sec  Max Age 20 sec  Forward Delay 15 sec
            Aging Time 300

Interface                Role Sts Cost      Prio.Nbr Type
-----
Fa0/1                    Root FWD 19        128.1   P2p
Fa0/4                    Desg FWD 38        128.1   P2p
Fa0/11                   Altn BLK 57        128.1   P2p
Fa0/13                   Desg FWD 38        128.1   P2p
```

- A. It has more than one interface that is connected to the root network segment.
- B. It is running RSTP while the elected root bridge is running 802.1d spanning tree.
- C. It has a higher MAC address than the elected root bridge.
- D. It has a higher bridge ID than the elected root bridge.

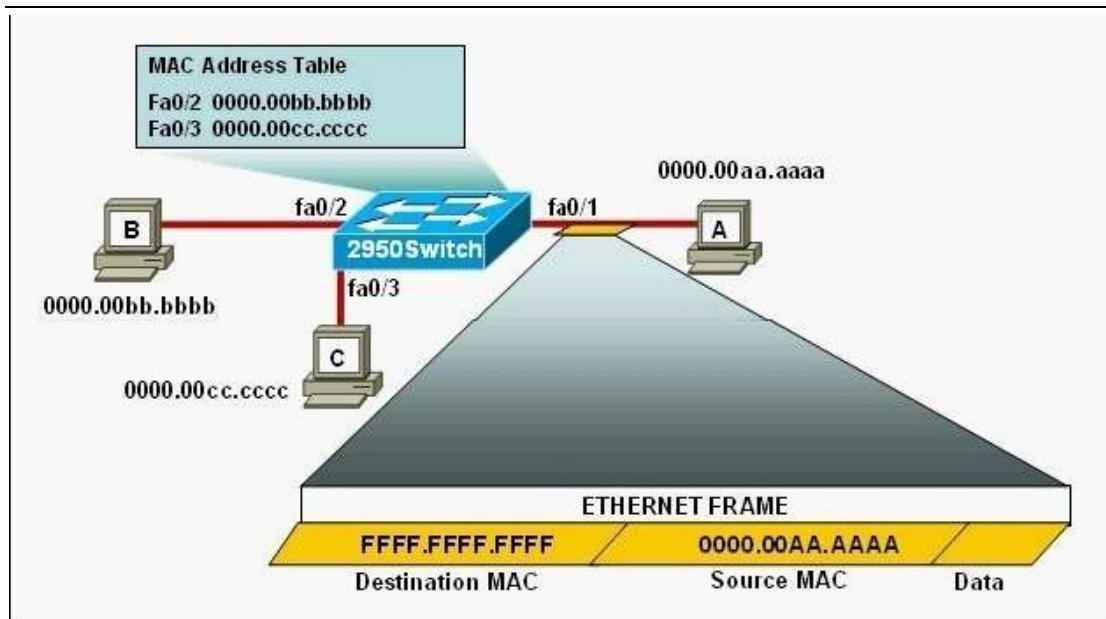
Correct Answer: D

QUESTION 5

Refer to the exhibit. The following commands are executed on interface fa0/1 of 2950Switch.

```
2950Switch(config-if)# switchport port-security
2950Switch(config-if)# switchport port-security mac-address sticky
2950Switch(config-if)# switchport port-security maximum 1
```

The Ethernet frame that is shown arrives on interface fa0/1. What two functions will occur when this frame is received by 2950Switch? (Choose two.)



- A. The MAC address table will now have an additional entry of fa0/1 FFFF.FFFF.FFFF.
- B. Only host A will be allowed to transmit frames on fa0/1.
- C. This frame will be discarded when it is received by 2950Switch.
- D. All frames arriving on 2950Switch with a destination of 0000.00aa.aaaa will be forwarded out fa0/1.
- E. Hosts B and C may forward frames out fa0/1 but frames arriving from other switches will not be forwarded out fa0/1.
- F. Only frames from source 0000.00bb.bbbb, the first learned MAC address of 2950Switch, will be forwarded out fa0/1.

Correct Answer: BD

QUESTION 6

Which two of these statements regarding RSTP are correct? (Choose two.)

- A. RSTP cannot operate with PVST+.
- B. RSTP defines new port roles.
- C. RSTP defines no new port states.
- D. RSTP is a proprietary implementation of IEEE 802.1D STP.
- E. RSTP is compatible with the original IEEE 802.1D STP.

Correct Answer: BE

QUESTION 7

Refer to exhibit. A network administrator cannot establish a Telnet session with the indicated router. What is the cause of this failure?

```
Current configuration : 639 bytes
!
version 12.4
no service timestamps log datetime msec
no service timestamps debug datetime msec
service password-encryption
!
hostname Router
!
enable secret 5 $1$MERr$hx5rvt7rPN0S4wqbX0X7m0
!

interface FastEthernet0/0
 ip address 192.168.1.1 255.255.255.0
 ip access-group 101 in
 duplex auto
 speed auto
!
access-list 101 deny tcp any any eq 22
access-list 101 permit ip any any
!
line con 0
 password 7 082245500A16
 login
line vty 0 4
 login
line vty 5 14
 login
!
end
```

- A. A Level 5 password is not set.
- B. An ACL is blocking Telnet access.
- C. The vty password is missing.
- D. The console password is missing.

Correct Answer: C

QUESTION 8

A network administrator needs to configure port security on a switch. Which two statements are true? (Choose two.)

- A. The network administrator can apply port security to dynamic access ports. B. The network administrator can apply port security to EtherChannels.
- B. When dynamic MAC address learning is enabled on an interface, the switch can learn new addresses, up to the maximum defined.
- C. The sticky learning feature allows the addition of dynamically learned addresses to the running configuration.
- D. The network administrator can configure static secure or sticky secure MAC addresses in the voice VLAN.

Correct Answer: CD

QUESTION 9

What are two characteristics of a switch that is configured as a VTP client? (Choose two.)

- A. If a switch that is configured to operate in client mode cannot access a VTP server, then the switch reverts to transparent mode.
- B. On switches that are configured to operate in client mode, VLANs can be created, deleted, or renamed locally.
- C. The local VLAN configuration is updated only when an update that has a higher configuration revision number is received.
- D. VTP advertisements are not forwarded to neighboring switches that are configured in VTP transparent mode.
- E. VTP client is the default VTP mode.
- F. When switches in VTP client mode are rebooted, they send a VTP advertisement request to the VTP servers.

Correct Answer: CF

QUESTION 10

At which layer of the OSI model is RSTP used to prevent loops?

- A. physical
- B. data link
- C. network
- D. transport

Correct Answer: B

QUESTION 11

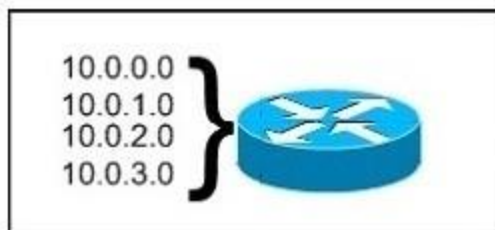
Which protocol provides a method of sharing VLAN configuration information between two Cisco switches?

- A. STP
- B. VTP
- C. 802.1Q
- D. RSTP

Correct Answer: B

QUESTION 12

Refer to the exhibit. What is the most appropriate summarization for these routes?



- A. 10.0.0.0 /21
- B. 10.0.0.0 /22
- C. 10.0.0.0 /23
- D. 10.0.0.0 /24

Correct Answer: B

QUESTION 13

The network administrator has been asked to give reasons for moving from IPv4 to IPv6. What are two valid reasons for adopting IPv6 over IPv4? (Choose two.)

- A. no broadcast
- B. change of source address in the IPv6 header
- C. change of destination address in the IPv6 header
- D. Telnet access does not require a password
- E. autoconfiguration
- F. NAT

Correct Answer: AE

QUESTION 14

The network technician is planning to use the 255.255.255.224 subnet mask on the network. Which three valid IP addresses can the technician use for the hosts? (Choose three.)

- A. 172.22.243.127
- B. 172.22.243.190
- C. 172.22.243.191
- D. 192.168.1.160
- E. 10.17.64.34
- F. 10.16.33.98

Correct Answer: BEF

QUESTION 15

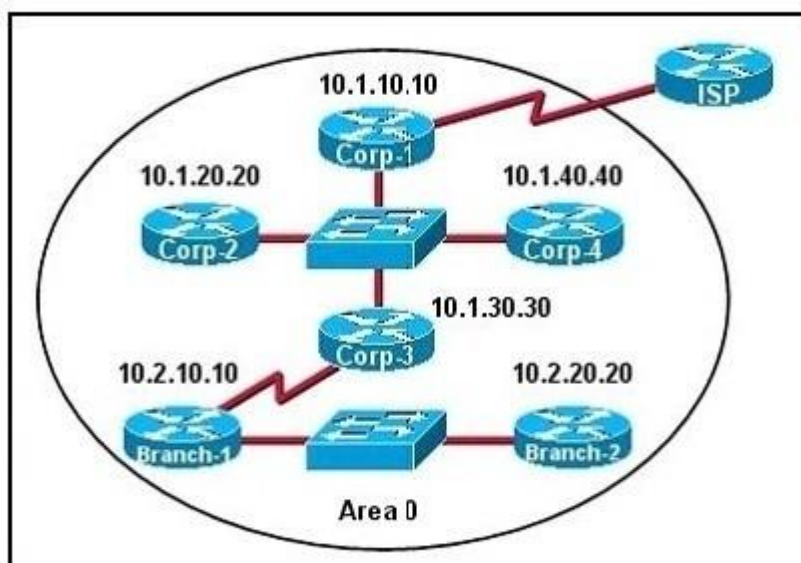
Which of these represents an IPv6 link-local address?

- A. FE80::380e:611a:e14f:3d69
- B. FE81::280f:512b:e14f:3d69
- C. FEFE:0345:5f1b::e14d:3d69
- D. FE08::280e:611:a:f14f:3d69

Correct Answer: A

QUESTION 16

The internetwork infrastructure of company XYZ consists of a single OSPF area as shown in the graphic.



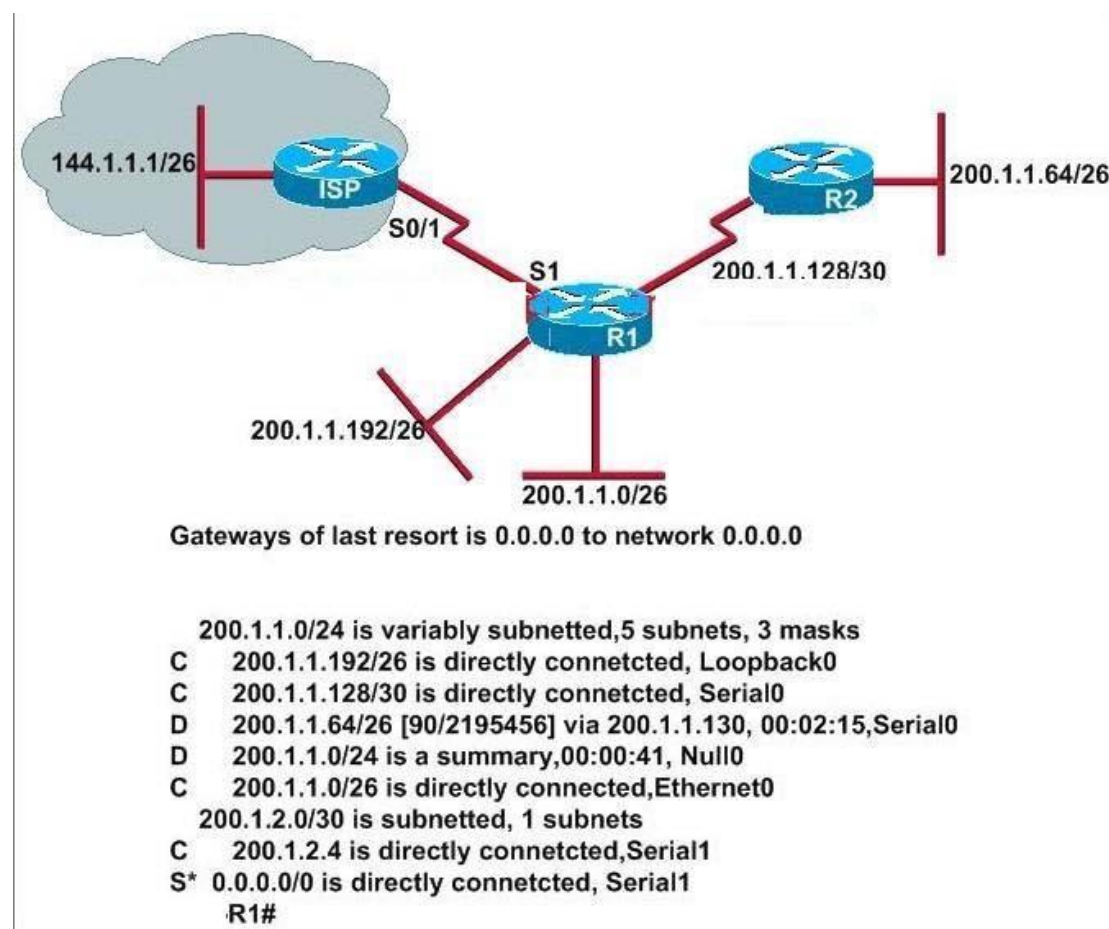
There is concern that a lack of router resources is impeding internetwork performance. As part of examining the router resources, the OSPF DRs need to be known. All the router OSPF priorities are at the default and the router IDs are shown with each router. Which routers are likely to have been elected as DR? (Choose two.)

- A. Corp-1
- B. Corp-2
- C. Corp-3
- D. Corp-4
- E. Branch-1
- F. Branch-2

Correct Answer: DF

QUESTION 17

Refer to the exhibit. Based on the output of the R1# show ip route command and the information presented in the graphic, which of the following is a potential routing problem?



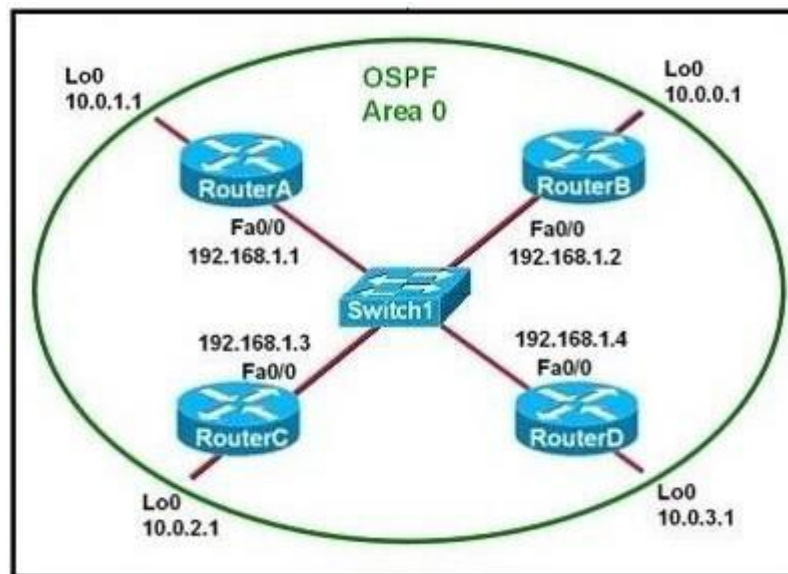
- A. the use of summarization for discontinuous networks

- B. the use of CIDR with a routing protocol that does not support it
- C. the use of VLSM with a routing protocol that does not support it
- D. the use of the no auto-summary command with a protocol that does not support summarization
- E. the use of the ip route 0.0.0.0 0.0.0.0 command with a routing protocol that does not support it

Correct Answer: A

QUESTION 18

Refer to the exhibit. Which two statements are true about the loopback address that is configured on RouterB? (Choose two.)



- A. It ensures that data will be forwarded by RouterB.
- B. It provides stability for the OSPF process on RouterB.
- C. It specifies that the router ID for RouterB should be 10.0.0.1.
- D. It decreases the metric for routes that are advertised from RouterB.
- E. It indicates that RouterB should be elected the DR for the LAN.

Correct Answer: BC

QUESTION 19

What are three characteristics of the OSPF routing protocol? (Choose three.)

- A. It converges quickly.
- B. OSPF is a classful routing protocol.
- C. It uses cost to determine the best route.

- D. It uses the DUAL algorithm to determine the best route.
- E. OSPF routers send the complete routing table to all directly attached routers.
- F. OSPF routers discover neighbors before exchanging routing information.

Correct Answer: ACF

QUESTION 20

An administrator is troubleshooting a problem between routers that are using different versions of RIP. Which two commands would provide information about which version of RIP was being sent and received on an interface? (Choose two.)

- A. show ip protocols
- B. show ip route rip
- C. show interfaces
- D. debug rip routing
- E. debug ip rip

Correct Answer: AE

QUESTION 21

Refer to the exhibit. Given the output from the show ip eigrp topology command, which router is the feasible successor?

```
router#show ip eigrp topology 10.0.0.5 255.255.255.255
IP-EIGRP topology entry for 10.0.0.5/32 State is Passive, Query
origin flag is 1, 1 Successor(s), FD is 41152000
```

A.

```
10.1.0.1 (Serial0), from 10.1.0.1, Send flag is 0x0
  Composite metric is (46152000/41640000), Route is Internal
  Vector metric:
    Minimum bandwidth is 64 Kbit
    Total delay is 45000 microseconds
    Reliability is 255/255
    Load is 1/255
    Minimum MTU is 1500
    Hop count is 2
```

B.

```
10.0.0.2 (Serial0.1), from 10.0.0.2, Send flag is 0x0
  Composite metric is (53973248/128256), Route is Internal
  Vector metric:
    Minimum bandwidth is 48 Kbit
    Total delay is 25000 microseconds
    Reliability is 255/255
    Load is 1/255
    Minimum MTU is 1500
    Hop count is 1
```

C.

```
10.1.0.3 (Serial0), from 10.1.0.3, Send flag is 0x0
  Composite metric is (46866176/46354176), Route is Internal
  Vector metric:
    Minimum bandwidth is 56 Kbit
    Total delay is 45000 microseconds
    Reliability is 255/255
    Load is 1/255
    Minimum MTU is 1500
    Hop count is 2
```

D.

```
10.1.1.1 (Serial0.1), from 10.1.1.1, Send flag is 0x0
  Composite metric is (46763776/46251776), Route is External
  Vector metric:
    Minimum bandwidth is 56 Kbit
    Total delay is 41000 microseconds
    Reliability is 255/255
    Load is 1/255
    Minimum MTU is 1500
    Hop count is 2
```

Correct Answer: B

QUESTION 22

Refer to the exhibit. You are connected to the router as user Mike. Which command allows you to see output from the OSPF debug command?

```
Router#show users
  Line      User      Host(s)      Idle      Location
*322 vty 0  Mike      idle        00:00:00  laptop

  Interface  User      Mode      Idle      Peer Address

Router#debug ip ospf events
OSPF events debugging is on
Router#
```

- A. terminal monitor
- B. show debugging
- C. show sessions
- D. show ip ospf interface

Correct Answer: A

QUESTION 23

Refer to the exhibit. Host A has tested connectivity to a remote network. What is the default gateway for host A?

```
PC>tracert 10.16.176.23
Tracing route to 10.16.176.23 over a maximum of 30 hops:

  1  31 ms  31 ms  32 ms  172.16.182.1
  2  62 ms  62 ms  62 ms  192.168.1.6
  3  93 ms  93 ms  34 ms  192.168.1.10
  4 125 ms 110 ms 125 ms 10.16.176.23

Trace complete
```

- A. 10.16.176.1
- B. 192.168.1.6
- C. 192.168.1.1
- D. 172.16.182.1

Correct Answer: D

QUESTION 24

Refer to the exhibit. What is the result of setting the no login command?

```
Router#config t
Router(config)#line vty 0 4
Router(config-line)#password c1sc0
Router(config-line)#no login
```

- A. Both SSH and Telnet access is denied.
- B. Both SSH and Telnet access requires a password.
- C. Both SSH and Telnet access requires a new password at first login.
- D. There is a virtually limitless supply of IP addresses.
- E. All telnet and SSH connections will be allowed without a password.

Correct Answer: E

QUESTION 25

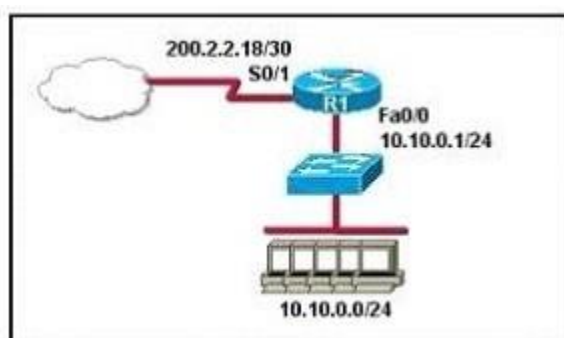
What does the "Inside Global" address represent in the configuration of NAT?

- A. the summarized address for all of the internal subnetted addresses
- B. the MAC address of the router used by inside hosts to connect to the Internet
- C. a globally unique, private IP address assigned to a host on the inside network
- D. a registered address that represents an inside host to an outside network

Correct Answer: D

QUESTION 26

Refer to the graphic. A company wants to use NAT in the network shown. Which commands will apply the NAT configuration to the proper interfaces? (Choose two.)



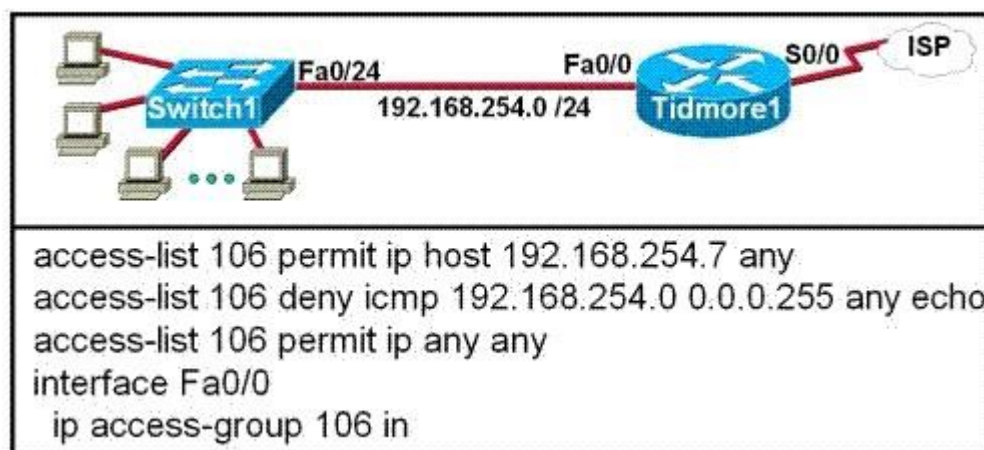
- A. R1(config)# interface serial0/1
R1(config-if)# ip nat inside
- B. R1(config)# interface serial0/1
R1(config-if)# ip nat outside
- C. R1(config)# interface fastethernet0/0
R1(config-if)# ip nat inside
- D. R1(config)# interface fastethernet0/0
R1(config-if)# ip nat outside
- E. R1(config)# interface serial0/1
R1(config-if)# ip nat outside source pool 200.2.2.18 255.255.255.252
- F. R1(config)# interface fastethernet0/0
R1(config-if)# ip nat inside source 10.10.0.0 255.255.255.0

Correct Answer: BC

QUESTION 27

Refer to the exhibit. A network technician enters the following lines into the router.

```
Tidmore1(config)# interface FastEthernet 0/0  
Tidmore1(config-if)# no ip access-group 106 in  
Tidmore1(config-if)# interface Serial 0/0  
Tidmore1(config-if)# ip access-group 106 out
```



What is the effect of this configuration?

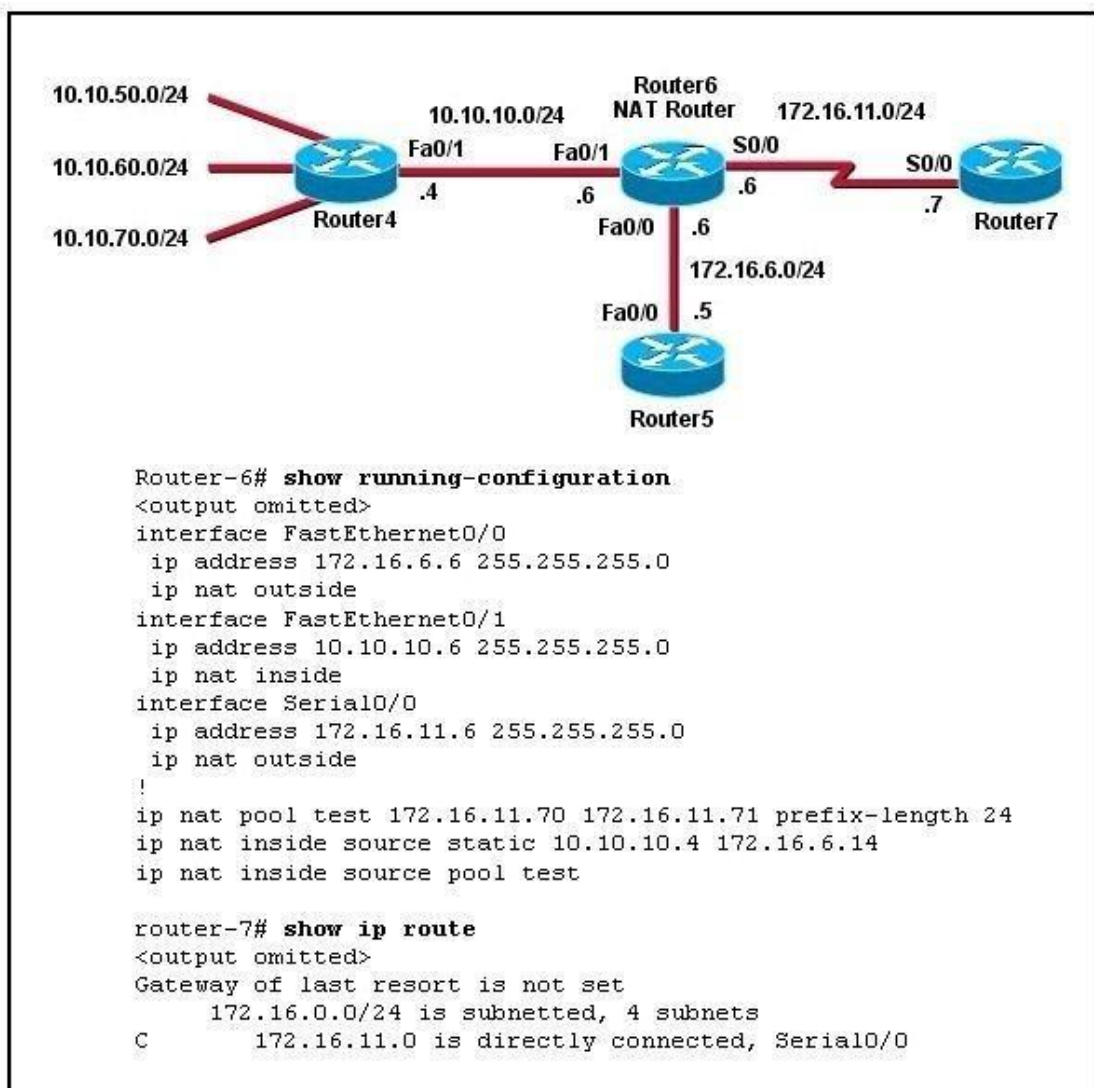
- A. The change has no effect on the packets being filtered.

- B. All traffic from the 192.168.254.0 LAN to the Internet is permitted.
- C. Web pages from the Internet cannot be accessed by hosts in the 192.168.254.0 LAN.
- D. No hosts in the 192.168.254.0 LAN except 192.168.254.7 can telnet to hosts on the Internet.

Correct Answer: A

QUESTION 28

Refer to the exhibit. Router4 can ping Router5 (172.16.6.5), but not Router7 (172.16.11.7). There are no routing protocols running in any of the routers, and Router4 has Router6 as its default gateway. What can be done to address this problem?



- A. Convert to static NAT.
- B. Convert to dynamic NAT.
- C. Add a static route in Router7 back to Router4.

D. Change the inside and outside NAT commands.

Correct Answer: C

QUESTION 29

A network engineer wants to allow a temporary entry for a remote user with a specific username and password so that the user can access the entire network over the Internet. Which ACL can be used?

- A. standard
- B. extended
- C. dynamic
- D. reflexive

Correct Answer: C

QUESTION 30

What is the advantage of using a multipoint interface instead of point-to-point subinterfaces when configuring a Frame Relay hub in a hub-and-spoke topology?

- A. It avoids split-horizon issues with distance vector routing protocols.
- B. IP addresses can be conserved if VLSM is not being used for subnetting.
- C. A multipoint interface offers greater security compared to point-to-point subinterface configurations.
- D. The multiple IP network addresses required for a multipoint interface provide greater addressing flexibility over point-to-point configurations.

Correct Answer: B

EnsurePass.com Members Features:

1. Verified Answers researched by industry experts.
2. Q&As are downloadable in PDF and VCE format.
3. 98% success Guarantee and **Money Back** Guarantee.
4. Free updates for **180** Days.
5. **Instant Access to download the Items**

View list of All Exam provided:

<http://www.ensurepass.com/certifications?index=A>

To purchase Lifetime Full Access Membership click here:

<http://www.ensurepass.com/user/register>

Valid Discount Code for 2015: JREH-G1A8-XHC6

To purchase the HOT Exams:

<u>Cisco</u>		<u>CompTIA</u>		<u>Oracle</u>	<u>VMWare</u>	<u>IBM</u>
<u>100-101</u>	<u>640-554</u>	<u>220-801</u>	<u>LX0-101</u>	<u>1Z0-051</u>	<u>VCAD510</u>	<u>C2170-011</u>
<u>200-120</u>	<u>200-101</u>	<u>220-802</u>	<u>N10-005</u>	<u>1Z0-052</u>	<u>VCP510</u>	<u>C2180-319</u>
<u>300-206</u>	<u>640-911</u>	<u>BR0-002</u>	<u>SG0-001</u>	<u>1Z0-053</u>	<u>VCP550</u>	<u>C4030-670</u>
<u>300-207</u>	<u>640-916</u>	<u>CAS-001</u>	<u>SG1-001</u>	<u>1Z0-060</u>	<u>VCAC510</u>	<u>C4040-221</u>
<u>300-208</u>	<u>640-864</u>	<u>CLO-001</u>	<u>SK0-003</u>	<u>1Z0-474</u>	<u>VCP5-DCV</u>	<u>RedHat</u>
<u>350-018</u>	<u>642-467</u>	<u>ISS-001</u>	<u>SY0-301</u>	<u>1Z0-482</u>	<u>VCP510PSE</u>	<u>EX200</u>
<u>352-001</u>	<u>642-813</u>	<u>JK0-010</u>	<u>SY0-401</u>	<u>1Z0-485</u>		<u>EX300</u>
<u>400-101</u>	<u>642-832</u>	<u>JK0-801</u>	<u>PK0-003</u>	<u>1Z0-580</u>		
<u>640-461</u>	<u>642-902</u>			<u>1Z0-820</u>		

