

Cisco CCNA 640-802 Exam



Vendor : Cisco

Exam Code: 640-802

Exam Name: Cisco Certified Network Associate

Version: Demo

QUESTION 1

For which type of connection should a straight-through cable be used?

- A. switch to switch
- B. switch to hub
- C. switch to router
- D. hub to hub
- E. router to PC

Correct Answer: C

QUESTION 2

Which type of cable is used to connect the COM port of a host to the COM port of a router or switch?

- A. crossover
- B. straight-through
- C. rolled
- D. shielded twisted-pair

Correct Answer: C

QUESTION 3

What is the first 24 bits in a MAC address called?

- A. NIC
- B. BIA
- C. OUI
- D. VAI

Correct Answer: C

QUESTION 4

In an Ethernet network, under what two scenarios can devices transmit? (Choose two.)

- A. when they receive a special token
- B. when there is a carrier

- C. when they detect no other devices are sending
- D. when the medium is idle
- E. when the server grants access

Correct Answer: CD

QUESTION 5

Which two benefits are provided by using a hierarchical addressing network addressing scheme? (Choose two.)

- A. reduces routing table entries
- B. auto-negotiation of media rates
- C. efficient utilization of MAC addresses
- D. dedicated communications between devices
- E. ease of management and troubleshooting

Correct Answer: AE

QUESTION 6

When a host transmits data across a network to another host, which process does the data go through?

- A. standardization
- B. conversion
- C. encapsulation
- D. synchronization

Correct Answer: C

QUESTION 7

Which two Ethernet fiber-optic modes support distances of greater than 550 meters?

- A. 1000BASE-CX
- B. 100BASE-FX
- C. 1000BASE-LX
- D. 1000BASE-SX
- E. 1000BASE-ZX

Correct Answer: CE

QUESTION 8

Refer to the exhibit. What type of connection would be supported by the cable diagram shown?

Pin Number	Color	Function	Pin	Color	Function
1	White/Green	TX+	1	White/Green	TX+
2	Green	TX-	2	Green	TX-
3	White/Orange	RX+	3	White/Orange	RX+
6	Orange	RX-	6	Orange	RX-

- A. PC to router
- B. PC to switch
- C. server to router
- D. router to router

Correct Answer: B

QUESTION 9

Refer to the exhibit. What type of connection would be supported by the cable diagram shown?

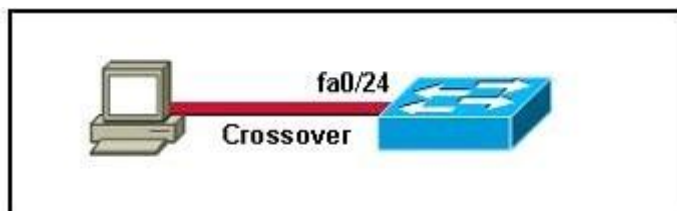
Pin Number	Color	Function	Pin	Color	Function
1	White/Green	TX+	3	Orange	RX+
2	Green	TX-	6	White/Orange	RX-
3	White/Orange	RX+	1	Green	TX+
6	Orange	RX-	2	White/Green	TX-

- A. PC to router
- B. PC to switch
- C. server to switch
- D. switch to router

Correct Answer: A

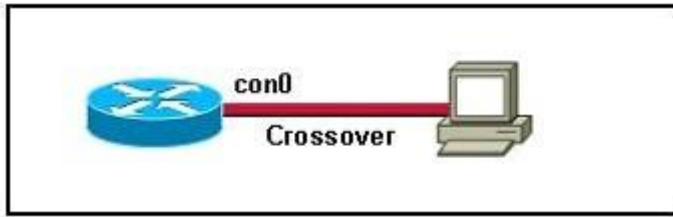
QUESTION 10

Which two topologies are using the correct type of twisted-pair cables? (Choose two.)

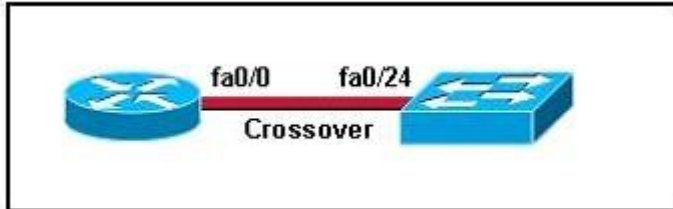


- A.

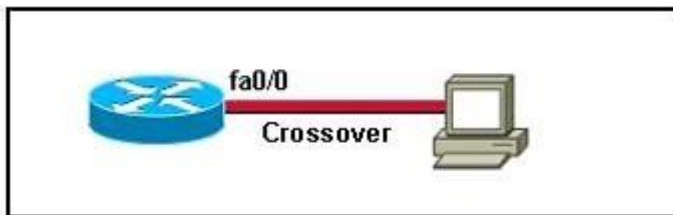
B.



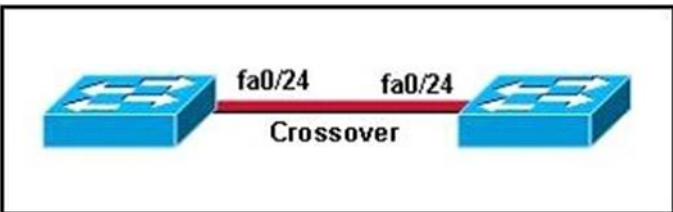
C.



D.



E.



Correct Answer: DE

QUESTION 11

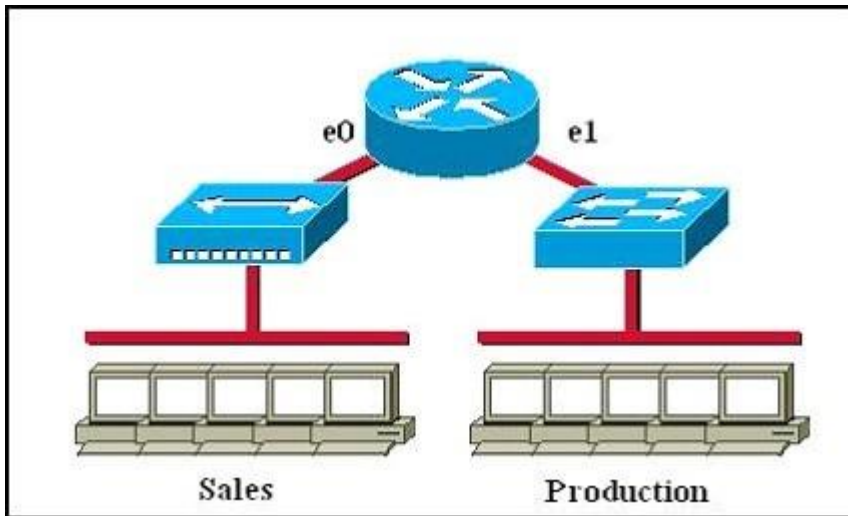
What are some of the advantages of using a router to segment the network? (Choose two.)

- A. Filtering can occur based on Layer 3 information.
- B. Broadcasts are eliminated.
- C. Routers generally cost less than switches.
- D. Broadcasts are not forwarded across the router.
- E. Adding a router to the network decreases latency.

Correct Answer: AD

QUESTION 12

Which of the following statements describe the network shown in the graphic? (Choose two.)

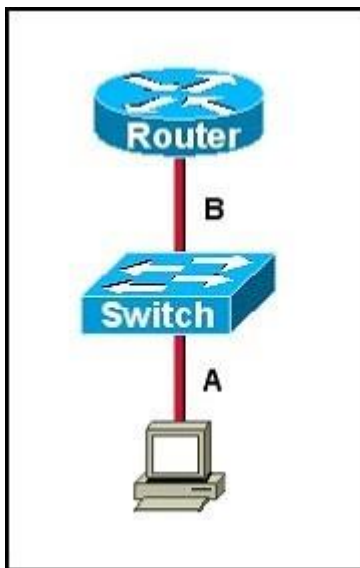


- A. There are two broadcast domains in the network.
- B. There are four broadcast domains in the network.
- C. There are six broadcast domains in the network.
- D. There are four collision domains in the network.
- E. There are five collision domains in the network.
- F. There are seven collision domains in the network.

Correct Answer: AF

QUESTION 13

Refer to the exhibit. The two connected ports on the switch are not turning orange or green. What would be the most effective steps to troubleshoot this physical layer problem? (Choose three.)



- A. Ensure that the Ethernet encapsulations match on the interconnected router and switch ports.
- B. Ensure that cables A and B are straight-through cables.
- C. Ensure cable A is plugged into a trunk port.
- D. Ensure the switch has power.
- E. Reboot all of the devices.
- F. Reseat all cables.

Correct Answer: BDF

QUESTION 14

For what two purposes does the Ethernet protocol use physical addresses? (Choose two.)

- A. to uniquely identify devices at Layer 2
- B. to allow communication with devices on a different network
- C. to differentiate a Layer 2 frame from a Layer 3 packet
- D. to establish a priority system to determine which device gets to transmit first
- E. to allow communication between different devices on the same network
- F. to allow detection of a remote device when its physical address is unknown

Correct Answer: AE

QUESTION 15

A network interface port has collision detection and carrier sensing enabled on a shared twisted pair network. From this statement, what is known about the network interface port?

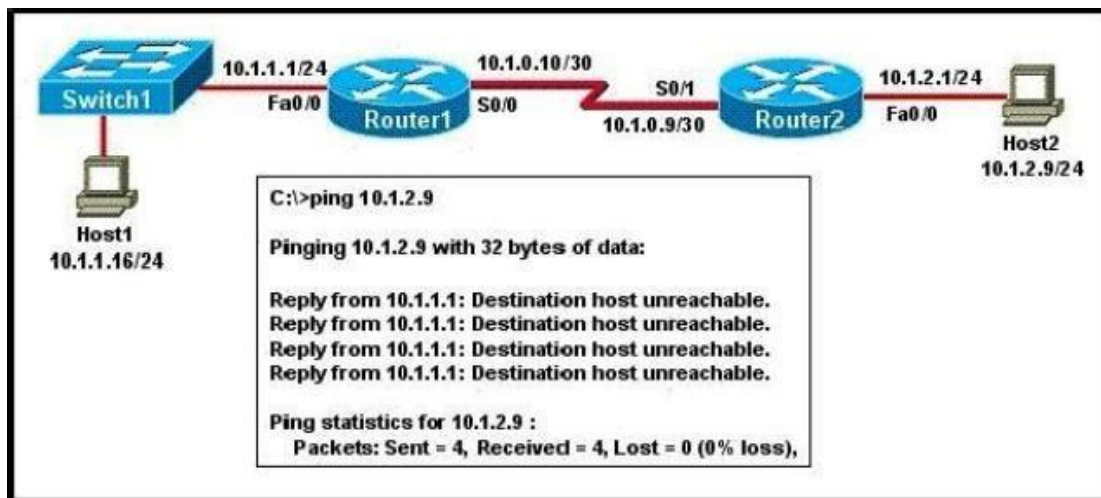
- A. This is a 10Mb/s switch port.
- B. This is a 100Mbs switch port.

- C. This is an Ethernet port operating at half duplex.
- D. This is an Ethernet port operating at full duplex.
- E. This is a port on a network interface card in a PC.

Correct Answer: C

QUESTION 16

Refer to the exhibit. A network administrator attempts to ping Host2 from Host1 and receives the result that are shown. What is a possible problem?

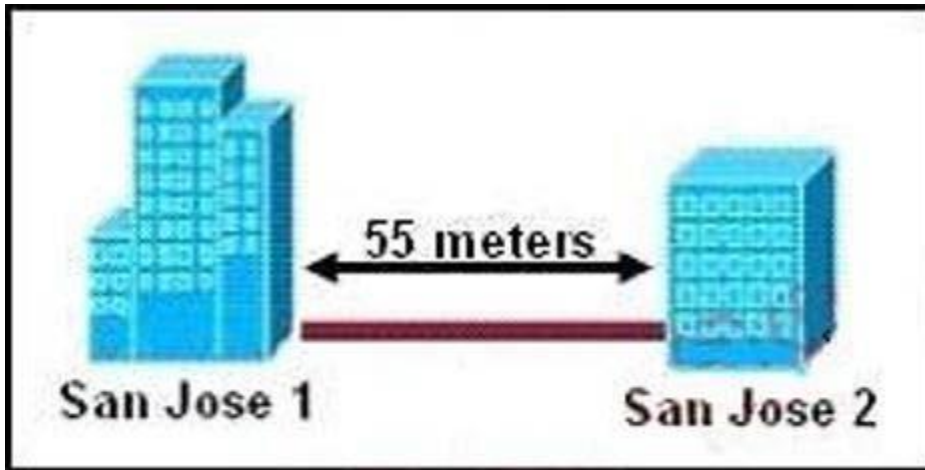


- A. The link between Host1 and Switch1 is down.
- B. TCP/IP is not functioning on Host1.
- C. The link between Router1 and Router2 is down.
- D. The default gateway on Host1 is incorrect.
- E. Interface Fa0/0 on Router1 is shutdown.
- F. The link between Switch1 and Router1 is down.

Correct Answer: C

QUESTION 17

Refer to the exhibit. Two buildings on the San Jose campus of a small company must be connected to use Ethernet with a bandwidth of at least 100 Mbps. The company is concerned about possible problems from voltage potential difference between the two buildings. Which media type should be used for the connection?



- A. UTP cable
- B. STP cable
- C. Coaxial cable
- D. Fiber optic cable

Correct Answer: D

QUESTION 18

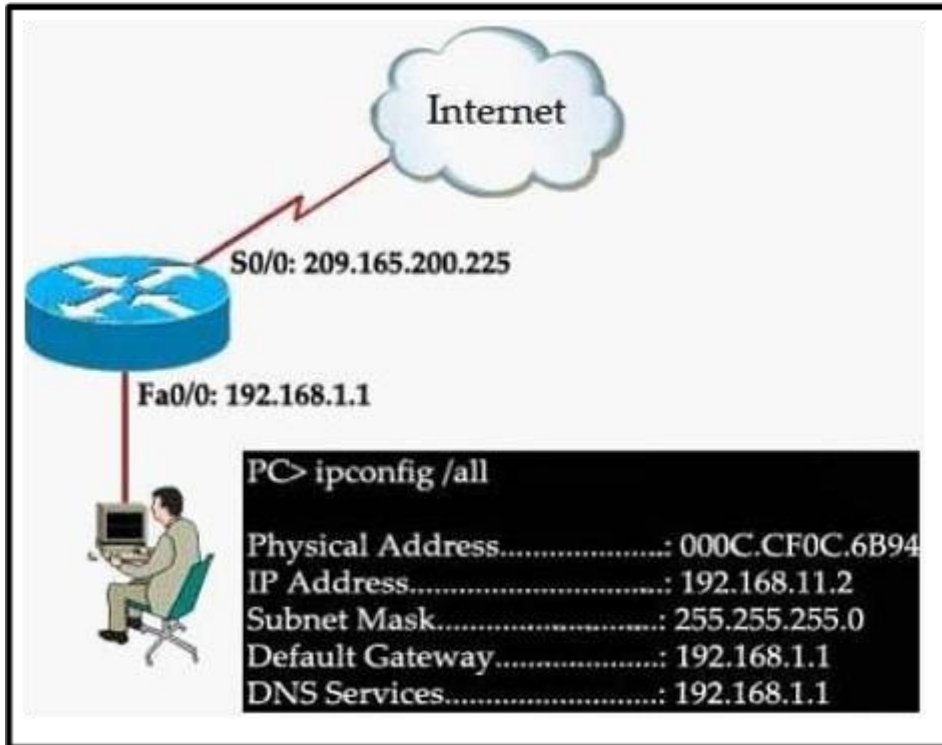
Which command can be used from a PC to verify the connectivity between host that connect through path?

- A. tracert address
- B. ping address
- C. arp address
- D. traceroute address

Correct Answer: A

QUESTION 19

Refer to the exhibit. A network engineer is troubleshooting an internet connectivity problem on the computer. What causing the problem?



- A. wrong DNS server
- B. wrong default gateway
- C. incorrect IP address
- D. incorrect subnet mask

Correct Answer: C

QUESTION 20

Refer to the exhibit. Host A has tested connectivity to a remote network. What is the default gateway for host A?

```
PC>tracert 10.16.176.23
```

Tracing route to 10.16.176.23 over a maximum of 30 hops:

```
 1  31 ms  31 ms  32 ms  172.16.182.1
 2  62 ms  62 ms  62 ms  192.168.1.6
 3  93 ms  93 ms  34 ms  192.168.1.10
 4 125 ms 110 ms 125 ms 10.16.176.23
```

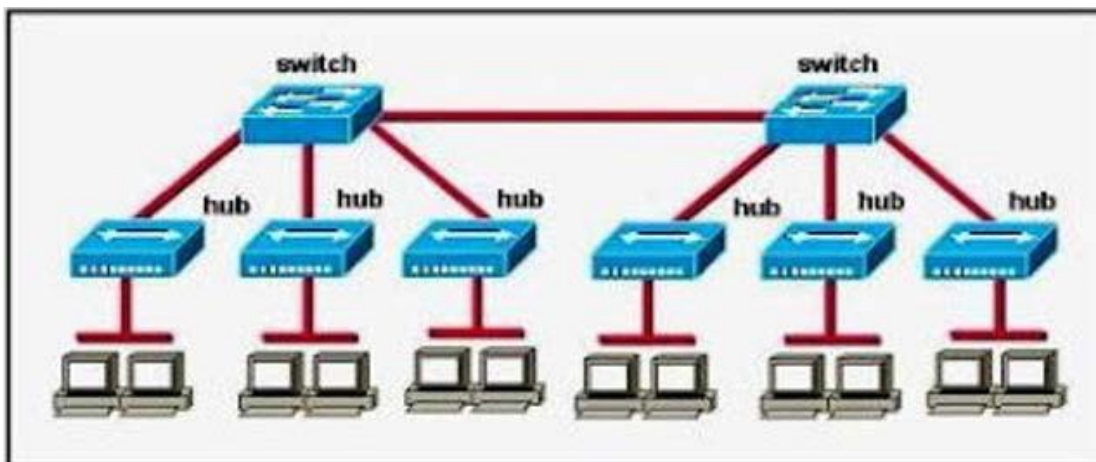
Trace complete

- A. 172.16.182.1
- B. 192.168.1.1
- C. 10.16.176.1
- D. 192.168.1.6

Correct Answer: A

QUESTION 21

How many broadcast domains are shown in the graphic assuming only the default VLAN is configured on the switches?

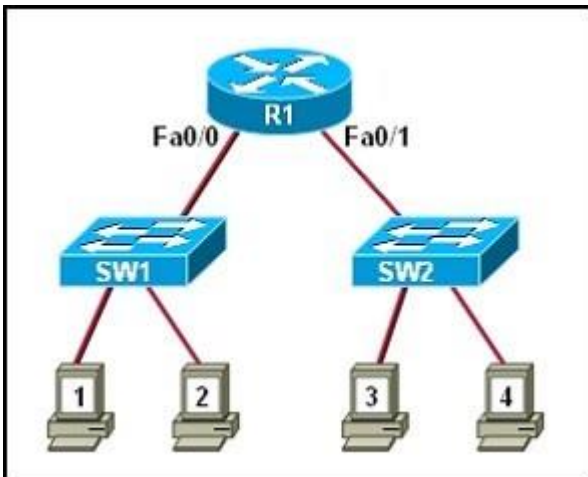


- A. one
- B. two
- C. six
- D. twelve

Correct Answer: A

QUESTION 22

Refer to the exhibit. Both switches are using a default configuration. Which two destination addresses will host 4 use to send data to host 1? (Choose two.)



- A. the IP address of host 1
- B. the IP address of host 4
- C. the MAC address of host 1
- D. the MAC address of host 4
- E. the MAC address of the Fa0/0 interface of the R1 router
- F. the MAC address of the Fa0/1 interface of the R1 router

Correct Answer: AF

QUESTION 23

What are two characteristics of Telnet? (Choose two.)

- A. It sends data in clear text format.
- B. It is no longer supported on Cisco network devices.
- C. It is more secure than SSH.
- D. It requires an enterprise license in order to be implemented.
- E. It requires that the destination device be configured to support Telnet connections.

Correct Answer: AE

QUESTION 24

Which of the following correctly describe steps in the OSI data encapsulation process? (Choose two.)

- A. The transport layer divides a data stream into segments and may add reliability and flow control information.
- B. The data link layer adds physical source and destination addresses and an FCS to the segment.
- C. Packets are created when the network layer encapsulates a frame with source and destination host addresses and protocol-related control information.
- D. Packets are created when the network layer adds Layer 3 addresses and control information to a segment.
- E. The presentation layer translates bits into voltages for transmission across the physical link.

Correct Answer: AD

QUESTION 25

Which layer of the OSI reference model uses the hardware address of a device to ensure message delivery to the proper host on a LAN?

- A. physical
- B. data link
- C. network
- D. transport

Correct Answer: B

QUESTION 26

Which layer of the OSI reference model uses flow control, sequencing, and acknowledgements to ensure that reliable networking occurs?

- A. data link
- B. network
- C. transport
- D. presentation
- E. physical

Correct Answer: C

QUESTION 27

A network admin wants to know every hop the packets take when he accesses cisco.com. Which command is the most appropriate to use?

- A. path cisco.com
- B. debug cisco.com
- C. trace cisco.com

D. traceroute cisco.com

Correct Answer: D

QUESTION 28

Where does routing occur within the DoD TCP/IP reference model?

- A. application
- B. internet
- C. network
- D. transport

Correct Answer: B

QUESTION 29

Which network protocol does DNS use?

- A. FTP
- B. TFTP
- C. TCP
- D. UDP
- E. SCP

Correct Answer: D

QUESTION 30

When two hosts are trying to communicate across a network, how does the host originating the communication determine the hardware address of the host that it wants to "talk" to?

- A. RARP request
- B. Show Network Address request
- C. Proxy ARP request
- D. ARP request
- E. Show Hardware Address request

Correct Answer: D

QUESTION 31

An administrator attempts a traceroute but receives a "Destination Unreadable" message. Which protocol is responsible for that message?

- A. RARP
- B. RUDP
- C. ICMP
- D. SNMP

Correct Answer: C

QUESTION 32

Which layer in the OSI reference model is responsible for determining the availability of the receiving program and checking to see if enough resources exist for that communication?

- A. transport
- B. network
- C. presentation
- D. session
- E. application

Correct Answer: E

QUESTION 33

Data transfer is slow between the source and destination. The Quality of Service requested by the transport layer in the OSI reference model is not being maintained. To fix this issue, at which layer should the troubleshooting process begin?

- A. presentation
- B. session
- C. transport
- D. network
- E. physical

Correct Answer: D

QUESTION 34

Which protocols are found in the network layer of the OSI reference model and are responsible for path determination and traffic switching?

- A. LAN
- B. routing
- C. WAN
- D. network

Correct Answer: B

QUESTION 35

Refer to the exhibit. An administrator pings the default gateway at 10.10.10.1 and sees the output as shown. At which OSI layer is the problem?

```
C:\> ping 10.10.10.1

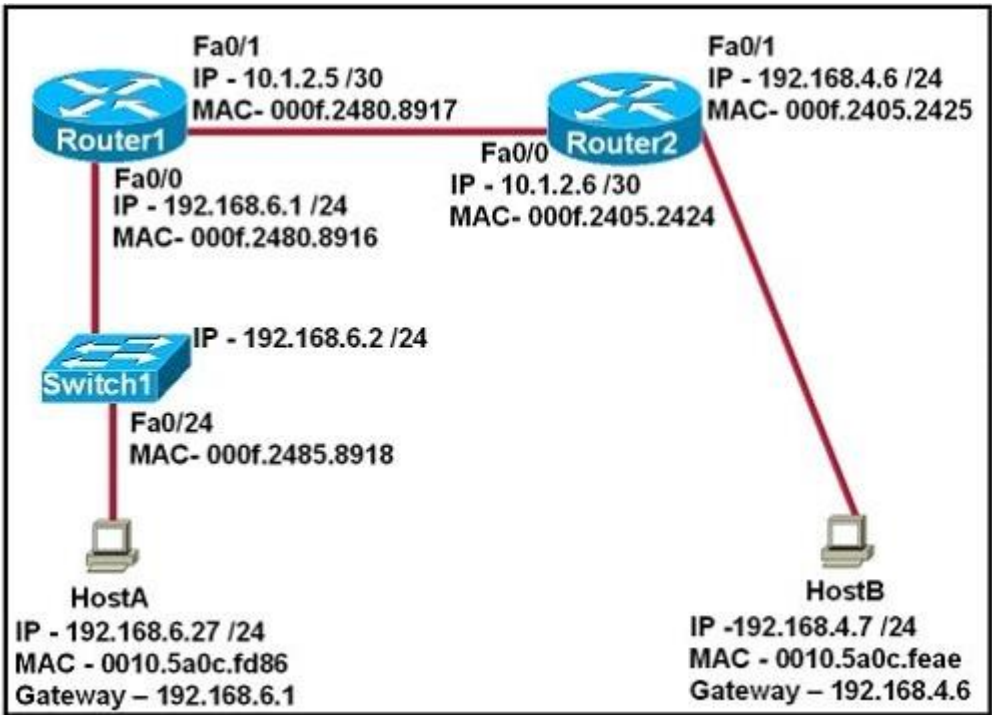
Pinging 10.10.10.1 with 32 bytes of data:
Request timed out.
Request timed out.
Request timed out.
Request timed out.
Ping statistics for 10.10.10.1:
    Packets: Sent = 4, Received = 0, Lost = 4 (100% loss)
```

- A. data link layer
- B. application layer
- C. access layer
- D. session layer
- E. network layer

Correct Answer: E

QUESTION 36

Refer to the exhibit. After HostA pings HostB, which entry will be in the ARP cache of HostA to support this transmission?



- A.

Interface Address	Physical Address	Type
192.168.4.7	000f.2480.8916	dynamic
- B.

Interface Address	Physical Address	Type
192.168.4.7	0010.5a0c.feae	dynamic
- C.

Interface Address	Physical Address	Type
192.168.6.1	0010.5a0c.feae	dynamic
- D.

Interface Address	Physical Address	Type
192.168.6.1	000f.2480.8916	dynamic
- E.

Interface Address	Physical Address	Type
192.168.6.2	0010.5a0c.feae	dynamic
- F.

Interface Address	Physical Address	Type
192.168.6.2	000f.2485.8918	dynamic

Correct Answer: D

QUESTION 37

An inbound access list has been configured on a serial interface to deny packet entry for TCP and UDP ports 21, 23 and 25. What types of packets will be permitted by this ACL? (Choose three.)

- A. FTP
- B. Telnet
- C. SMTP
- D. DNS
- E. HTTP
- F. POP3

Correct Answer: DEF

QUESTION 38

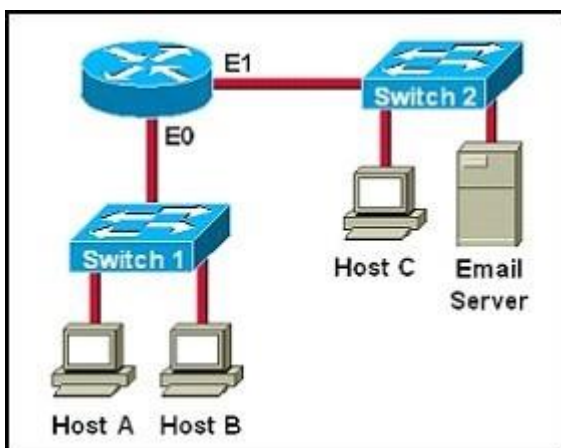
Which of the following are types of flow control? (Choose three.)

- A. buffering
- B. cut-through
- C. windowing
- D. congestion avoidance
- E. load balancing

Correct Answer: ACD

QUESTION 39

Which destination addresses will be used by Host A to send data to Host C? (Choose two.)

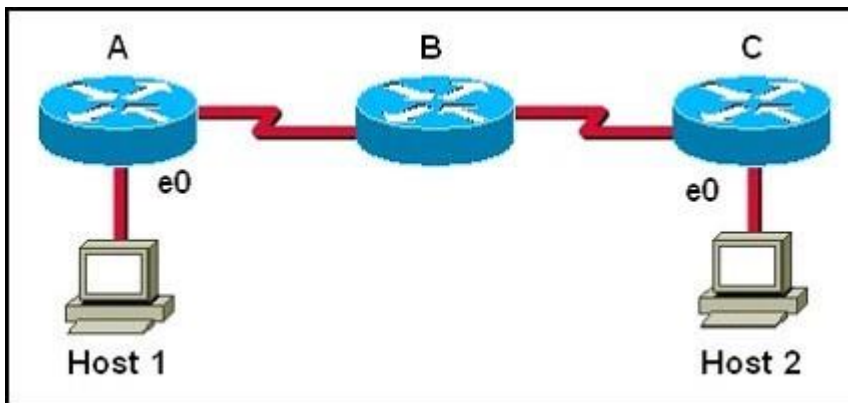


- A. the IP address of Switch 1
- B. the MAC address of Switch 1
- C. the IP address of Host C
- D. the MAC address of Host C
- E. the IP address of the router's E0 interface
- F. the MAC address of the router's E0 interface

Correct Answer: CF

QUESTION 40

Host 1 is trying to communicate with Host 2. The e0 interface on Router C is down. Which of the following are true? (Choose two.)



- A. Router C will use ICMP to inform Host 1 that Host 2 cannot be reached.
- B. Router C will use ICMP to inform Router B that Host 2 cannot be reached.
- C. Router C will use ICMP to inform Host 1, Router A, and Router B that Host 2 cannot be reached.
- D. Router C will send a Destination Unreachable message type.
- E. Router C will send a Router Selection message type.
- F. Router C will send a Source Quench message type.

Correct Answer: AD

EnsurePass.com Members Features:

1. Verified Answers researched by industry experts.
2. Q&As are downloadable in PDF and VCE format.
3. 98% success Guarantee and **Money Back** Guarantee.
4. Free updates for **180** Days.
5. **Instant Access to download the Items**

View list of All Exam provided:

<http://www.ensurepass.com/certifications?index=A>

To purchase Lifetime Full Access Membership click here:

<http://www.ensurepass.com/user/register>

Valid Discount Code for 2015: JREH-G1A8-XHC6

To purchase the HOT Exams:

<u>Cisco</u>		<u>CompTIA</u>		<u>Oracle</u>	<u>VMWare</u>	<u>IBM</u>
<u>100-101</u>	<u>640-554</u>	<u>220-801</u>	<u>LX0-101</u>	<u>1Z0-051</u>	<u>VCAD510</u>	<u>C2170-011</u>
<u>200-120</u>	<u>200-101</u>	<u>220-802</u>	<u>N10-005</u>	<u>1Z0-052</u>	<u>VCP510</u>	<u>C2180-319</u>
<u>300-206</u>	<u>640-911</u>	<u>BR0-002</u>	<u>SG0-001</u>	<u>1Z0-053</u>	<u>VCP550</u>	<u>C4030-670</u>
<u>300-207</u>	<u>640-916</u>	<u>CAS-001</u>	<u>SG1-001</u>	<u>1Z0-060</u>	<u>VCAC510</u>	<u>C4040-221</u>
<u>300-208</u>	<u>640-864</u>	<u>CLO-001</u>	<u>SK0-003</u>	<u>1Z0-474</u>	<u>VCP5-DCV</u>	<u>RedHat</u>
<u>350-018</u>	<u>642-467</u>	<u>ISS-001</u>	<u>SY0-301</u>	<u>1Z0-482</u>	<u>VCP510PSE</u>	<u>EX200</u>
<u>352-001</u>	<u>642-813</u>	<u>JK0-010</u>	<u>SY0-401</u>	<u>1Z0-485</u>		<u>EX300</u>
<u>400-101</u>	<u>642-832</u>	<u>JK0-801</u>	<u>PK0-003</u>	<u>1Z0-580</u>		
<u>640-461</u>	<u>642-902</u>			<u>1Z0-820</u>		

