



**Exam Code:** 000-486

**Exam Name:** Test 486 object-oriented analysis and design  
with uml test

**Vendor:** IBM

**Version:** DEMO

## Part: A

1: Refer to the exhibit to answer the question.

The Acme Ticketing System is to be updated so customers can also purchase tickets directly via the Internet. Besides the Agent which already exists, which of the following are also actor(s) for the updated system?

The Acme Ticket Company is an international company with a ticketing system from which tickets for major events such as musical concerts, theater and sports events, can be purchased over the phone. It employs many agents to answer call inquiries concerning dates and locations, and, in most cases, results in the caller purchasing tickets.

Scenario: **Purchase tickets from the Acme Ticket Company over the phone**

A customer calls to purchase tickets to an event. The agent asks the caller for the name of the event, its location and preferred dates. The caller provides this information. The agent informs the caller if seating is available for the requested show and the available ticket prices. The caller selects the ticket price and the number of seats. The agent locates the required number of seats in a section and holds them temporarily so they cannot be taken by another agent. The agent informs the caller of the viewing angle of the seating, such as from the left side, front, or back of the stage.

The caller decides on the section and confirms the number of tickets. The agent collects payment information from the caller, such as the cardholder name, credit card number, and expiration date. After receiving the credit transaction authorization from the card issuer, the agent confirms the ticket purchase and gives the confirmation number to the caller. If the sale does not complete due to bad credit, the seats are released, otherwise the seats are sold. If the credit card system is not operational, the seats are held and the sales transaction will be completed later. All sales are final. The customer and agent agree on either having the tickets mailed directly to the customer mailing address or held at the "will-call" box of the performance location.

A. Internet Browser

B. Customer

C. Customer, Ticketing System

D. Customer, Internet Browser

E. Customer, Internet Browser, Ticketing System

**Correct Answers: B**

2: Consider the following statements from a domain expert on a project:

An automated bill-payment functionality needs to be added to our online banking application. The bank's customer can make online bill payments to vendors (such as the electric company, telephone company, rental agency). Only vendors who have already signed up with the bank can be paid. There are two ways to make payments:

1. Specify a one-time payment for a specific amount, or

2. Establish regular payments to be made on a specific interval such as monthly or weekly.

Customers are notified of the details of successful payments via email. Their email addresses are already available.

Which of the following are requirements that **MUST** be reflected in use cases?

A. The customer must be given a choice of notification modes, via email or surface mail.

B. The customer must be given a choice of adding a new vendor to the bank's list of payees.

C. The customer must be given a choice of payment modes, one-time payment mode and recurring payment mode.

D. When a payment attempt succeeds, the customer must be notified of the details via email.

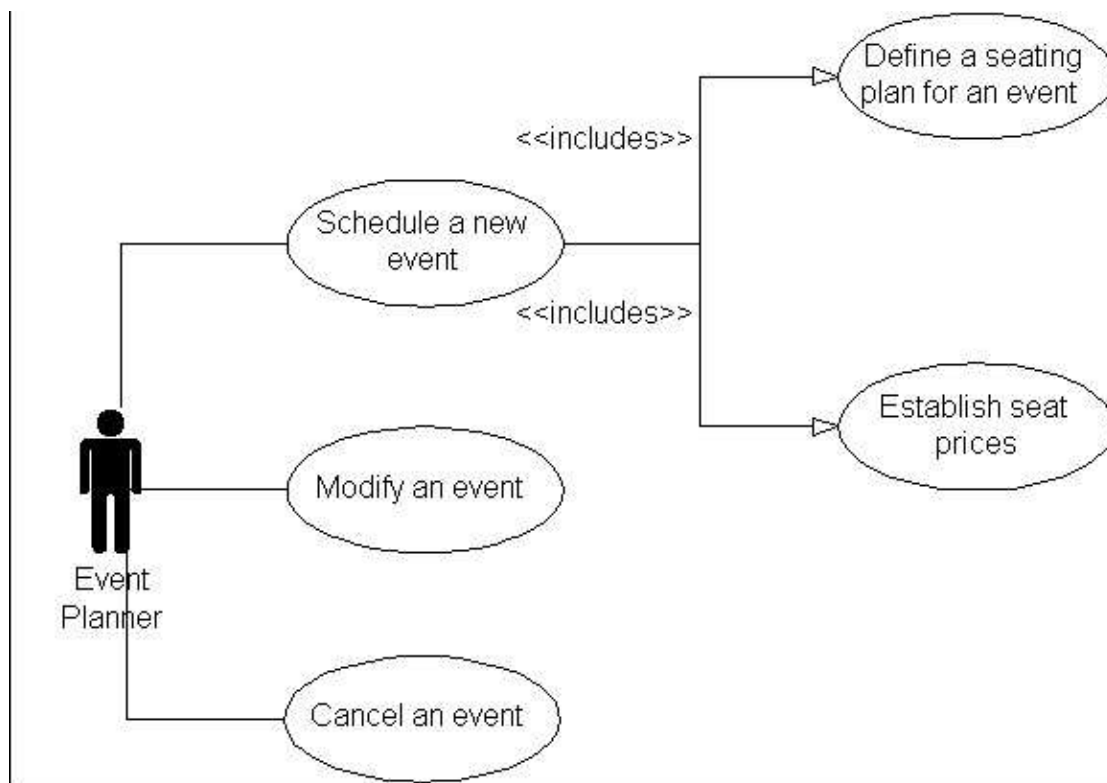
**Correct Answers: C D**

3: Refer to the exhibits to answer the question.

There are new requirements to create seating configurations that are reusable, store those configurations in an external database, and automatically create a weekly event status report.

What new use cases are necessary?

Arena events are scheduled by the event planner. When an event gets scheduled, it is added to the arena schedule. Each event is scheduled for a date and time period. Each event has different prices for different seat types. Each arena can hold different types and quantities of seats. The possible types of seats are: balcony, mezzanine, and floor. In addition, an arena can be reconfigured based upon the event type. For example, a hockey game will use the floor space for the game; a concert will use the floor space for seating. At this time, the event planner has a master schedule for all events and facilities.



- A. Create a seating configuration, Store seating configuration, Generate event status report.
- B. Create a seating configuration, Generate event status report.
- C. Create a seating configuration, Modify a seating configuration, Delete a seating configuration.
- D. Store seating configuration, Generate event status report.

**Correct Answers: B**

4: An application project is being built that enables users to research stocks interactively over the Internet.

- Mary has been a stock analyst for years and understands how to use technical indicators, such as price movements, to determine when to buy and sell stocks.
- Sam has been a stock analyst for years and understands how to use techniques such as Price/Earnings (P/E) valuation and growth rates to determine when to buy and sell stocks.
- Harry is the company webmaster and knows a lot about the Internet.
- Denise is the manager in charge of the project and is ultimately authorized to decide what

requirements are to be delivered in the different releases.

Who would be MOST effective to include in the use case writing sessions for this application?

A.Mary, Sam, Harry and Denise during requirements discussions.

B.Mary, Sam, and Harry during requirements discussions. Denise occasionally to approve the decisions.

C.Mary during requirements discussions that relate to technical trading techniques. Sam during discussions that relate to valuation trading techniques. Harry occasionally to answer technical feasibility questions. Denise as much as possible to make scope decisions in realtime.

D.Mary during requirements discussions that relate to technical trading techniques. Sam during discussions that relate to valuation trading techniques. Harry occasionally to answer technical feasibility questions. Denise occasionally to approve the decisions.

**Correct Answers: C**

5: A GUI prototype has been demonstrated to marketing personnel and end users for a project. During the demonstration, it became clear that the terminology used and computer skill level were not a good match for the end users, but marketing was thrilled with the state-of-the-art user interface designed. What steps should the analyst take?

A.Update the object model and GUI to match the end users' terminology and continue with development.

B.Update the object model and GUI to match the end users' terminology, redesign the GUI to be targeted to a less-skilled user, iterate on the prototype, explain the steps you are taking to marketing, and hold another demonstration session with end users and marketing.

C.Update the GUI to match the end users' terminology, arrange training offerings to accompany the product release to enhance end user skills, support marketing in a roadtrip to client sites as well as conference demonstrations.

D.Update the GUI to match the end users' terminology, continue with development, and support marketing in their trips to client sites as well as conference demonstrations.

**Correct Answers: B**

6: When writing the initial use cases for a project, it is MOST important to define:

A.The job title for each user of the system.

B.What user requirements will be fulfilled.

C.How user requirements will be fulfilled.

D.How external system interactions will be fulfilled.

**Correct Answers: B**

7: Which of the following is NOT a UML mechanism used to organize use cases?

A.Generalization

B.Override

C.Extend

D.Include

**Correct Answers: B**

8: Refer to the exhibits to answer the question.

Which one of the following labels should be used to describe lines 1, 2, 3?

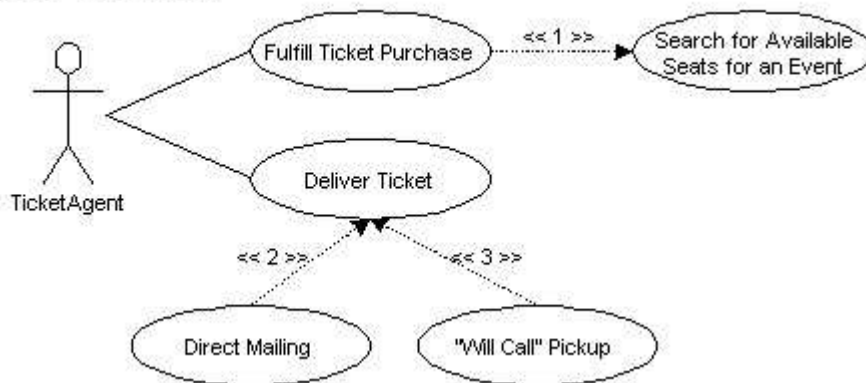
The Acme Ticket Company is an international company with a ticketing system from which tickets for major events such as musical concerts, theater and sports events, can be purchased over the phone. It employs many agents to answer call inquiries concerning dates and locations, and, in most cases, results in the caller purchasing tickets.

Scenario: **Purchase tickets from the Acme Ticket Company over the phone**

A customer calls to purchase tickets to an event. The agent asks the caller for the name of the event, its location and preferred dates. The caller provides this information. The agent informs the caller if seating is available for the requested show and the available ticket prices. The caller selects the ticket price and the number of seats. The agent locates the required number of seats in a section and holds them temporarily so they cannot be taken by another agent. The agent informs the caller of the viewing angle of the seating, such as from the left side, front, or back of the stage.

The caller decides on the section and confirms the number of tickets. The agent collects payment information from the caller, such as the cardholder name, credit card number, and expiration date. After receiving the credit transaction authorization from the card issuer, the agent confirms the ticket purchase and gives the confirmation number to the caller. If the sale does not complete due to bad credit, the seats are released, otherwise the seats are sold. If the credit card system is not operational, the seats are held and the sales transaction will be completed later. All sales are final. The customer and agent agree on either having the tickets mailed directly to the customer mailing address or held at the "will-call" box of the performance location.

### Ticket Agency Use Case Model



- A.Include, include, include
- B.Include, include, extend
- C.Include, extend, extend
- D.Extend, include, extend
- E.Extend, extend, include

**Correct Answers: C**

9: The following interaction occurs during a requirements discussion:

End user: "The trader should be able to set up multiple stock trades to be submitted together."

Developer: "So, that's like a queue that gets processed first-in, first-out, right?"

End user: "That's right. Once the trade occurs, the stocks show up in the user's portfolio."

Developer: "The portfolio is a container of the user's stocks then?"

What terms should the analyst include in the related use cases?

- A.Queue, container
- B.Trade, container
- C.Trade, portfolio
- D.Trade, queue, portfolio, container

**Correct Answers: C**

10: An Interaction Diagram should be associated with:

- A.a Use Case.
- B.an Activity Diagram.

C.a CRC card.

D.a State Transition Diagram.

**Correct Answers: A**

11: The following are the requirements for a Report-generation module in an application:

1.When new data is generated, the user-interface should be refreshed automatically to reflect the latest values

2.Multiple view types are possible

Which of the following Model and View interactions BEST satisfies the above requirements?

A.Establish subscribe/notify mechanism between view and model, with the model updating the view based upon the view type.

B.Establish a subscribe/notify mechanism between the view and model layers so that the views get notified of the change.

C.Develop intelligence within the model so that it decides which views are to be refreshed based on the view type.

D.Combine the view and model layers into a single entity so that the interactions are localized and notifications are instantaneous.

**Correct Answers: B**

12: Each credit card service provider has its own interface that all client programs must use. What is the BEST way to design a system so that it may easily switch between multiple providers and add new providers as required, while keeping the complexity low?

A.Create an object with a common API for business objects to use. This object covers all credit card providers and routes requests from the business objects to the adaptor object of the designated credit card service provider, which handles the interface conversions.

B.Create an ordered collection of credit card service providers and have each try to handle the service requests from the business objects. If one cannot handle the request it passes the request to the next one until it is eventually handled or discarded.

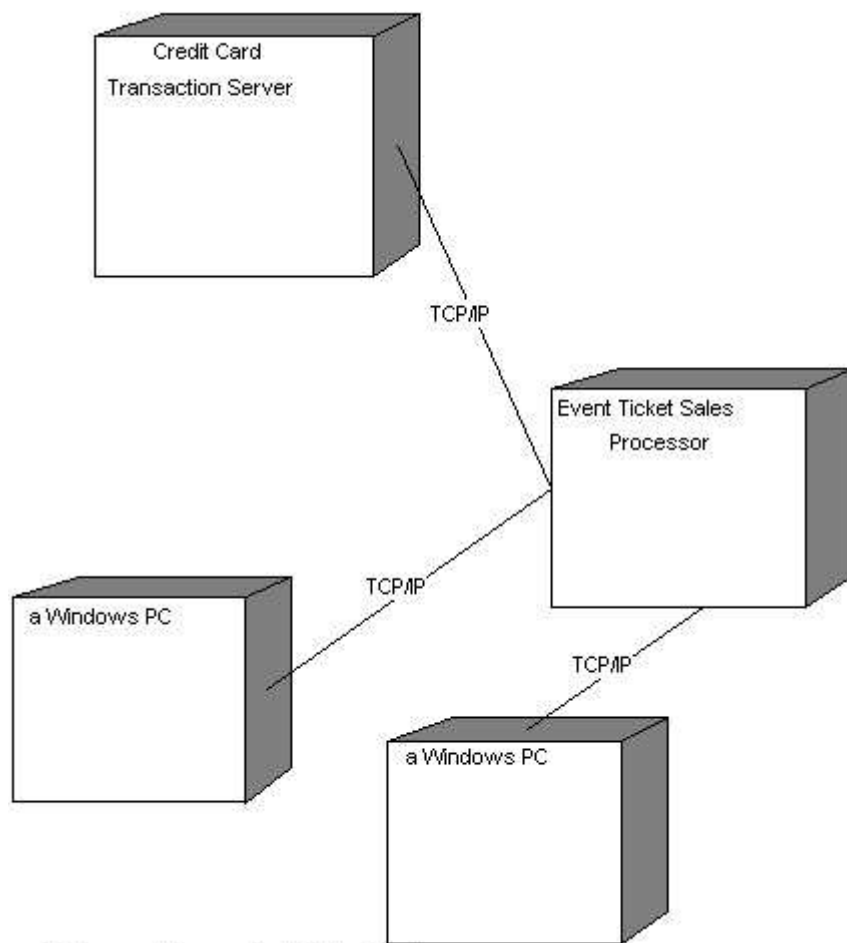
C.Have the business objects communicate directly to the service providers using each service provider's API.

D.Maintain a global pool of credit card service requests from the business objects. Each credit card service goes through the pool to find and claim the requests that it can handle. It then processes each request.

**Correct Answers: A**

13: Refer to the exhibit to answer the question.

Which packages should be placed in the Event Ticket Sales Processor that is pictured in the Deployment Diagram for the Ticketing System?



Deployment Diagram for Ticketing System

- A.Credit Card Domain
  - B.Ticket Purchasing
  - C.Event Ticketing Domain
  - D.Ticket Purchasing Client
- Correct Answers: B C**

14: Class A is dependent on class B if:

- A.A sends a message to B.
- B.A has a reference to B.
- C.B is used as a parameter for a message sent by A.
- D.B sends a message to A.

**Correct Answers: A B C**

15: Classes should be grouped into packages by:

- A.project team organization.
- B.classes that are related to the same overall services.
- C.classes that work together in the same interaction diagrams.
- D.the class diagrams they appear in.

**Correct Answers: B**

16: Which of the following statements about designing an enterprise application is TRUE?

A. Due to the realities of a commercial system, performance requirements should be resolved in the analysis phase of the project.

B. A three or more tier architecture should be considered in order to facilitate scalability.

C. By definition, each use case represents a set of actions that are performed atomically; it therefore maps directly to a transaction.

D. In modelling a system that will have many concurrent users, collaboration diagrams are more useful than sequence diagrams.

**Correct Answers: B**

17: In a well-designed layered architecture, which layers should know about which?

A. Model knows View and Persistence, View knows Model and Persistence

B. View knows Model, Model knows Persistence

C. View knows Model, Persistence knows View and Model

D. View knows Model, Model knows View and Persistence, Persistence knows Model

**Correct Answers: B**

18: When scheduling project iterations based on use cases, which of the following are good candidates to consider for development in early iterations? Use cases that:

A. represent primary line-of-business processes.

B. involve new and risky technology.

C. involve well-established technologies.

D. impact the architectural design significantly.

**Correct Answers: A B D**

19: On a large project, where it is important to architect the system so that teams can work relatively independently, what should the PRIMARY focus be?

A. Packages and their public interfaces.

B. Frameworks.

C. Smaller teams.

D. The use of interfaces.

**Correct Answers: A**

20: When doing domain analysis, the class diagram should be drawn PRIMARILY to represent:

A. messages sent between objects.

B. implementation objects such as wrappers and devices.

C. business objects and implementation objects such as wrappers and devices.

D. business objects.

**Correct Answers: D**